

FOUR RIVERS SANITATION AUTHORITY

DECOMMISSIONED EQUIPMENT DEMOLITION CAPITAL PROJECT #2634

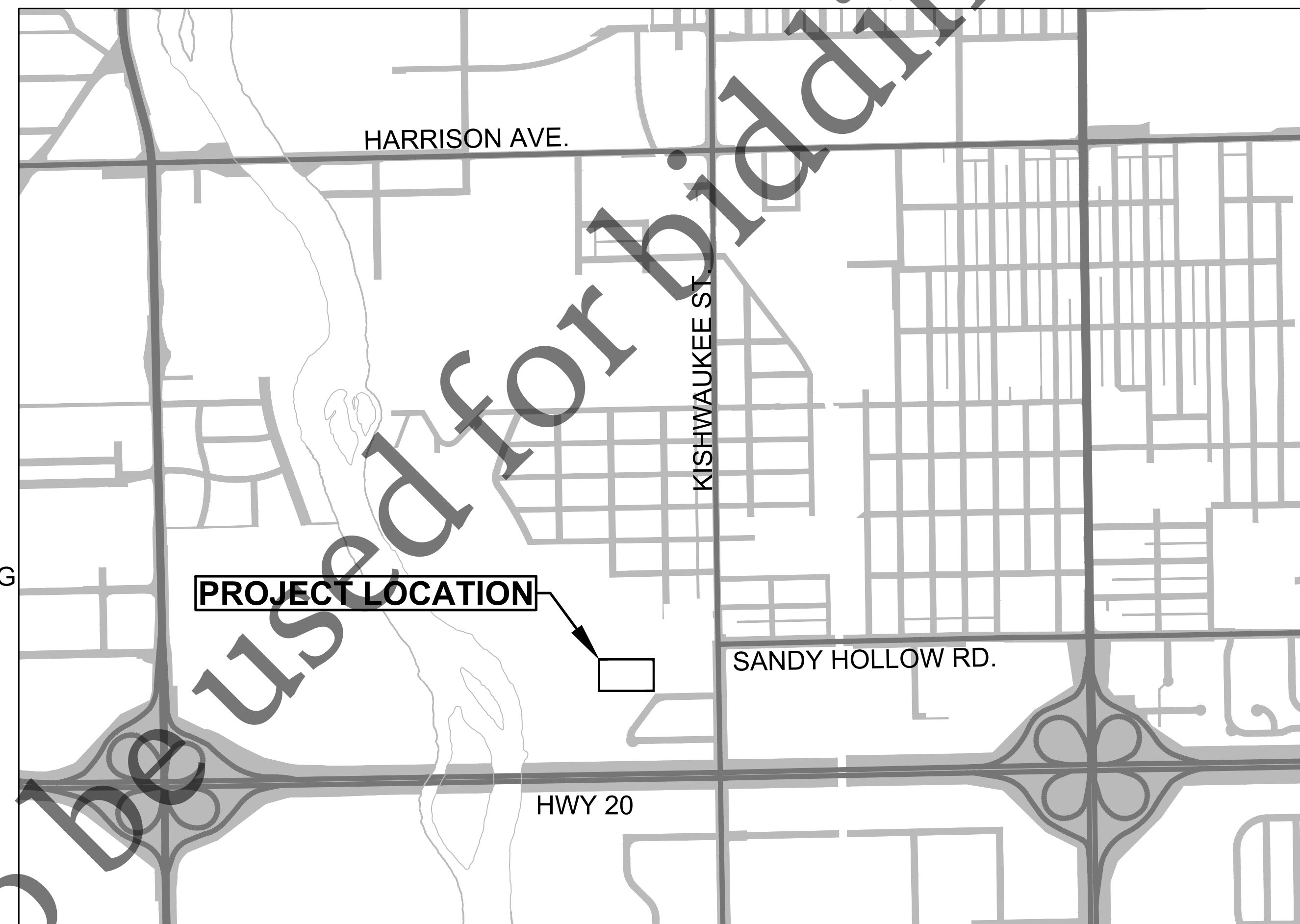
2026

BOARD OF TRUSTEES

RICHARD T. POLLACK	PRESIDENT
BENJAMIN W. BERNSTEN	VICE-PRESIDENT
RICHARD W. MOWRIS	CLERK/TREASURER
GINGER HAAS	TRUSTEE
BRAD LONG	TRUSTEE

OFFICIALS

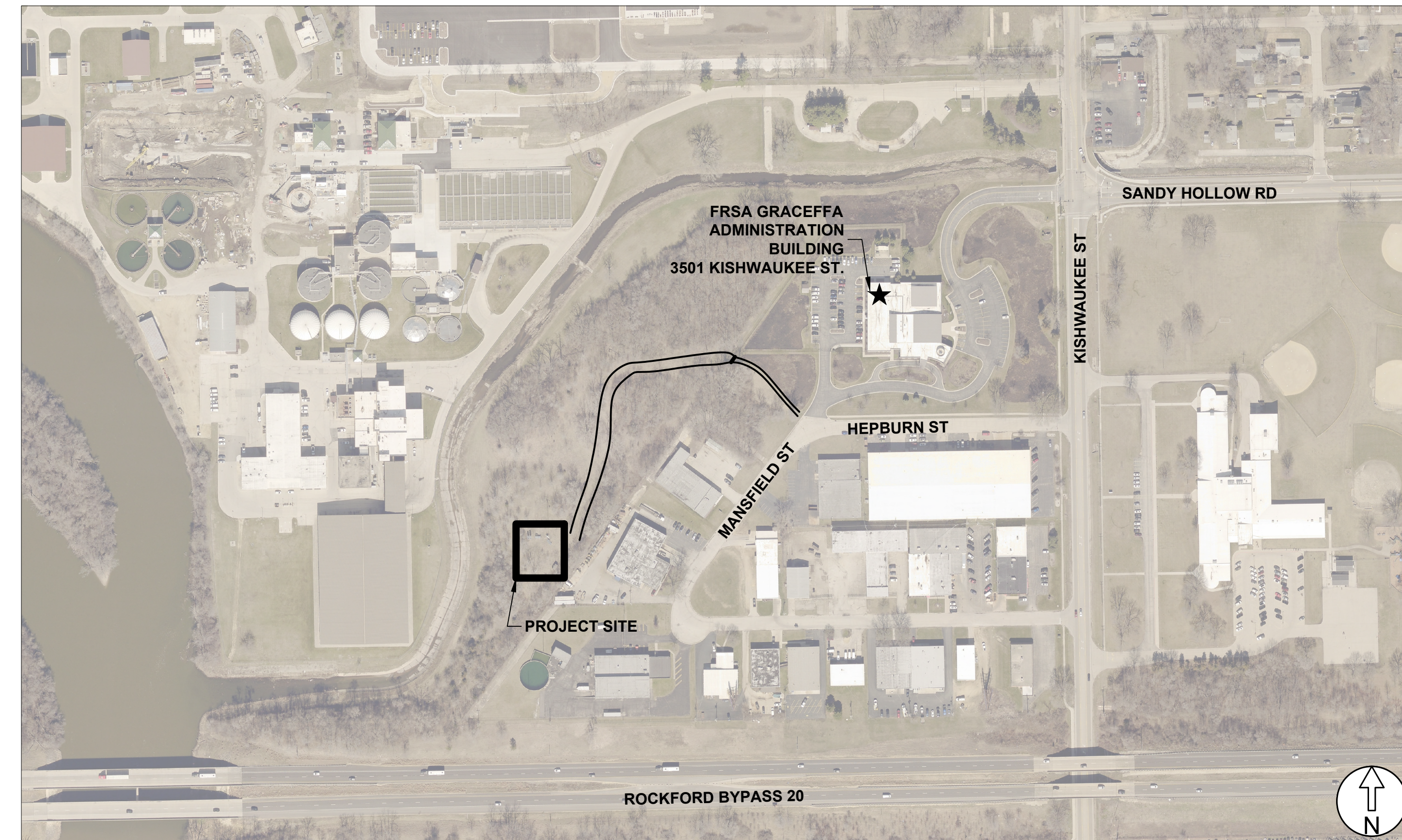
CHRISTOPHER T. BAER, PE	EXECUTIVE DIRECTOR
MATTHEW L. CAMPBELL, PE	DIRECTOR OF ENGINEERING



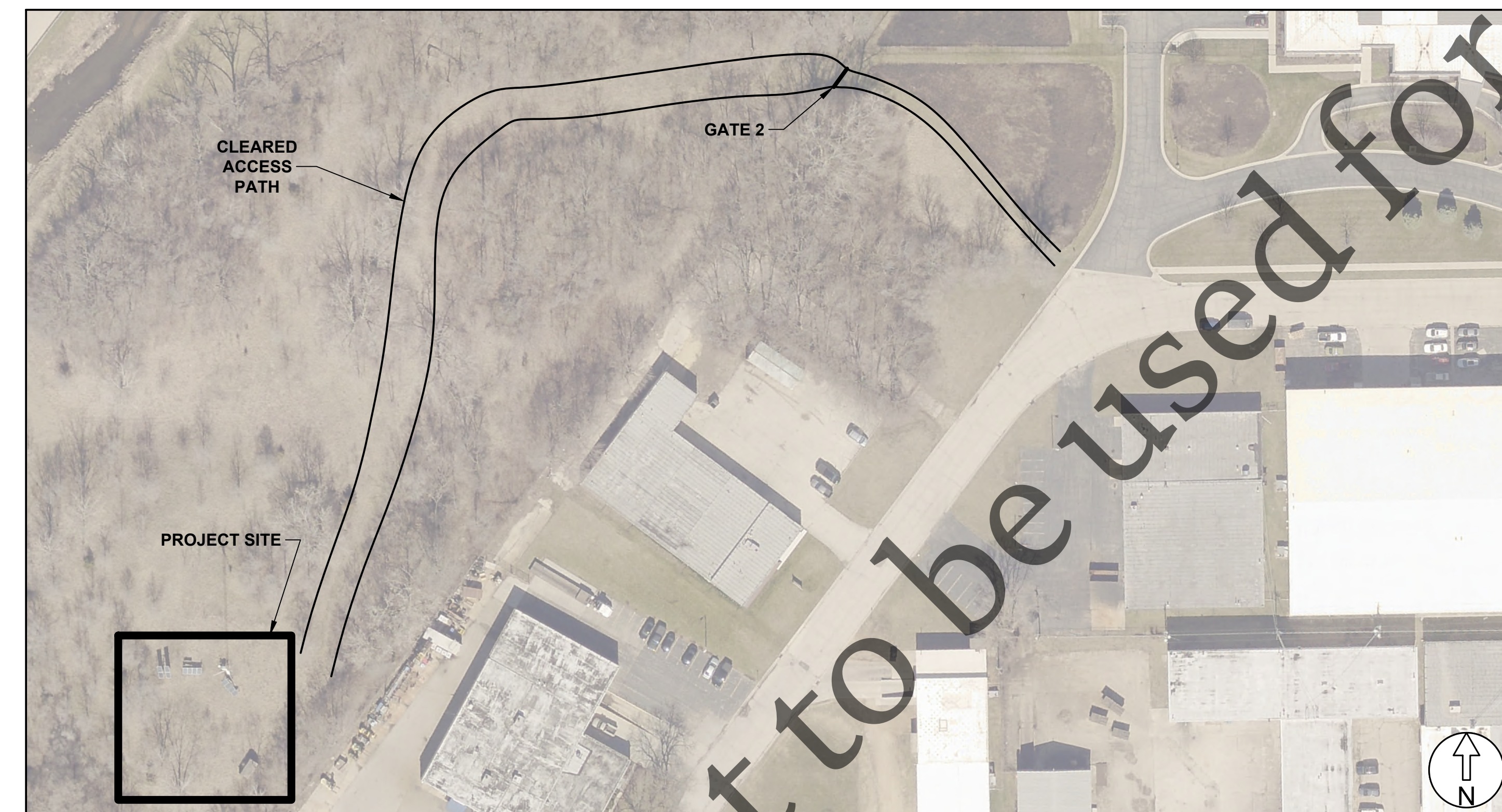
WINNEBAGO COUNTY, ILLINOIS

INDEX OF SHEETS	
1	COVER
2	GENERAL NOTES AND SUMMARY OF QTYS.
3	REMOVAL OVERVIEW
4	REMOVAL DETAILS





PROJECT LOCATION



PROJECT SITE ACCESS

GENERAL NOTES

1. THE CONTRACTOR IS SOLELY RESPONSIBLE FOR THE EXECUTION OF WORK TO THE LINES AND GRADES SHOWN ON THE PLANS. CONSTRUCTION SHALL NOT VARY FROM THE PLANS WITHOUT PRIOR APPROVAL FROM THE FOUR RIVERS SANITATION AUTHORITY (FRSA).
2. THE CONTRACTOR SHALL NOTIFY THE FRSA, MUNICIPAL AGENCIES, JURISDICTIONAL ROADWAY AUTHORITIES AND ALL AFFECTED PROPERTY OWNERS A MINIMUM OF 48 HOURS PRIOR TO START OF CONSTRUCTION.
3. UTILITY LOCATIONS SHOWN ON THE PLANS ARE BASED ON RECORD INFORMATION AND ARE NOT GUARANTEED. THE CONTRACTOR SHALL IDENTIFY ALL UTILITY LOCATIONS IN THE FIELD BY CONTACTING J.U.L.I.E. AT 811, AND ALL UTILITIES NOT ON THE J.U.L.I.E. NETWORK, 72 HOURS, MINIMUM, PRIOR TO START OF CONSTRUCTION. THE CONTRACTOR SHALL PROTECT, RESTRAIN, OR SUPPORT UTILITIES AND SHALL CONTACT THE UTILITY OWNER FOR PROTECTION PROCEDURE AND SCHEDULE COORDINATION. ALL COSTS ASSOCIATED WITH PROTECTION OF UTILITIES (INCLUDING TUNNELING, RESTRAINT, BRACING, SUPPORTING, SHEATHING, ETC.) WHETHER BY THE CONTRACTOR OR UTILITY COMPANY SHALL BE AT NO ADDITIONAL COST TO THE FRSA.

SPECIAL NOTES

1. THE CONTRACTOR SHALL CONTACT BEN CHRISTIANSEN @ (815) 387-7676 SEVEN (7) CALENDAR DAYS, MINIMUM, PRIOR TO BEGINNING CONSTRUCTION.
2. THE CONTRACTOR SHALL PROVIDE THEIR OWN LOCK TO SECURE GATE 2. CONTRACTOR'S LOCK SHALL BE ADDED TO FRSA'S EXISTING LOCK TO MAINTAIN SECURE ACCESS FOR BOTH PARTIES.
3. CONTRACT INCLUDES THE REMOVAL OF POWER GENERATING EQUIPMENT. THE CONTRACTOR IS SOLELY RESPONSIBLE FOR THE SAFETY OF HIS/HER OPERATIONS.

SUMMARY OF QUANTITIES

No.	ITEM	UNIT	QTY.
1	STRUCTURE DEMOLITION, SHED	LS	1
2	STRUCTURE DEMOLITION, SOLAR PANEL AND TOWER	LS	1
3	STRUCTURE DEMOLITION, SOLAR PANEL AND FRAME	LS	2
4	STRUCTURE DEMOLITION, TURBINE AND TOWER	LS	1

file: I:\District Projects\Decommissioned Equipment Demolition 2634\01 Design\Drawings (Working Folder)\2634 Design.dwg



No.	DATE	REVISION	INT.

**DECOMMISSIONED EQUIPMENT DEMOLITION
CAPITAL IMPROVEMENT PROJECT 2634**

GENERAL NOTES AND SUMMARY OF QTYS.

FOR BID

Sheet No.
2 of 4

Date:
4/24/2026

STRUCTURE DEMOLITION, SOLAR PANEL AND TOWER. REMOVE ALL STRUCTURES. REMOVE ALL POWER & CONTROLS, COMPLETE. SEE DETAIL 3 SHEET 4

STRUCTURE DEMOLITION, SOLAR PANEL AND FRAME. REMOVE ALL STRUCTURES. REMOVE ALL POWER & CONTROLS, COMPLETE. SEE DETAILS 7 & 8 SHEET 4

STRUCTURE DEMOLITION, TURBINE AND TOWER. REMOVE ALL STRUCTURES, INCLUDING GUY WIRES. CONCRETE SLABS TO REMAIN. REMOVE ALL POWER & CONTROLS, COMPLETE. SEE DETAILS 1 & 2 SHEET 4

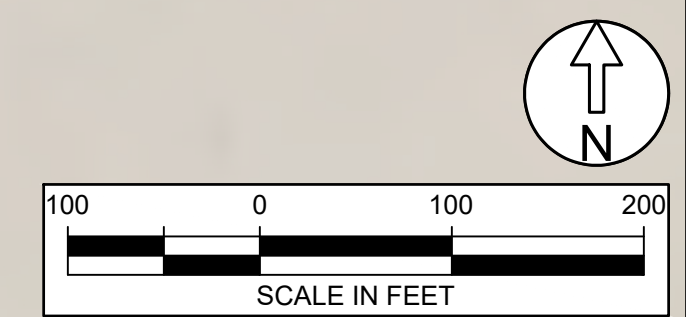
STRUCTURE DEMOLITION, SOLAR PANEL AND FRAME. REMOVE ALL STRUCTURES. REMOVE ALL POWER & CONTROLS, COMPLETE. SEE DETAILS 5 & 6 SHEET 4

STRUCTURE DEMOLITION, SHED. REMOVE ENTIRE STRUCTURE. CONCRETE SLAB TO REMAIN. SEE DETAIL 4 SHEET 4

CONSTRUCTION NOTES

1. EXISTING CONCRETE SLABS SUPPORTING EQUIPMENT ARE TO REMAIN IN PLACE.
2. ANY CONDUITS, BOLTS, ETC. EXTENDING FROM CONCRETE SLABS SHALL BE CUT FLUSH WITH THE SLAB SURFACE.
3. ANY EXPOSED CONDUITS SHALL BE CAPPED/ PLUGGED WITH A WATERTIGHT CONNECTION AT THE LIMITS OF REMOVAL.

Not to be used for bidding purposes



file: I:\District Projects\Decommissioned Equipment Demolition 2634\01 Design\Drawings (Working Folder)\2634 Design.dwg



No.	DATE	REVISION	INT.

DECOMMISSIONED EQUIPMENT DEMOLITION
CAPITAL IMPROVEMENT PROJECT 2634

REMOVAL OVERVIEW

Sheet No.
3 of 4
Date:
4/24/2026
FOR BID



1 TURBINE AND TOWER DETAILS
SH 4 SCALE: NONE



2 TURBINE POWER & CONTROLS DETAILS
SH 4 SCALE: NONE



3 SOLAR PANEL AND TOWER DETAILS
SH 4 SCALE: NONE



4 SHED DETAILS
SH 4 SCALE: NONE



5 SOLAR PANEL AND FRAME DETAILS
SH 4 SCALE: NONE



6 SOLAR POWER & CONTROLS DETAILS
SH 4 SCALE: NONE



7 SOLAR PANEL AND FRAME DETAILS
SH 4 SCALE: NONE



8 SOLAR POWER & CONTROLS DETAILS
SH 4 SCALE: NONE

file: I:\District Projects\Decommissioned Equipment Demolition 2634\01 Design\Drawings (Working Folder)\2634 Design.dwg



No.	DATE	REVISION	INT.

DECOMMISSIONED EQUIPMENT DEMOLITION
CAPITAL IMPROVEMENT PROJECT 2643

REMOVAL DETAILS

Sheet No.
4 of 4

FOR BID

Date:
4/24/2026