

FOUR RIVERS SANITATION AUTHORITY

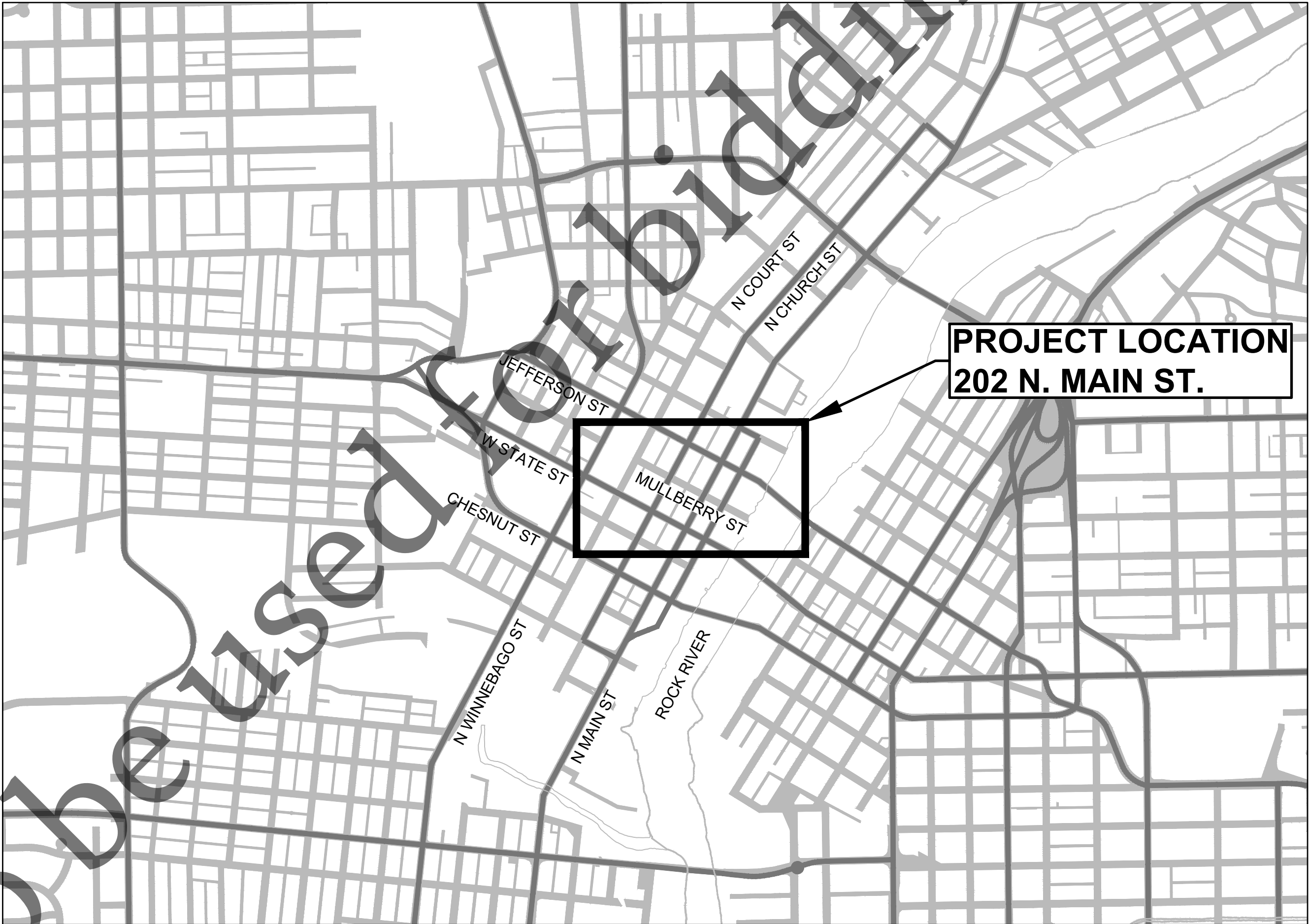
202 N MAIN ST. SANITARY SERVICE CAPITAL PROJECT #2636 2026

BOARD OF TRUSTEES

RICHARD T. POLLACK	PRESIDENT
BENJAMIN W. BERNSTEN	VICE-PRESIDENT
RICHARD W. MOWRIS	CLERK/TREASURER
GINGER HAAS	TRUSTEE
BRAD LONG	TRUSTEE

OFFICIALS

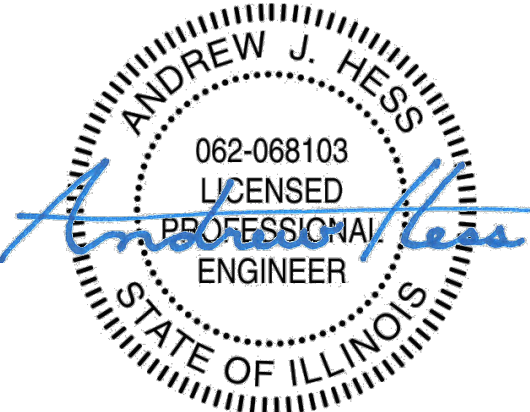
CHRISTOPHER T. BAER, PE	EXECUTIVE DIRECTOR
MATTHEW L. CAMPBELL, PE	DIRECTOR OF ENGINEERING



WINNEBAGO COUNTY, ILLINOIS

INDEX OF SHEETS

- 1 COVER
- 2 LEGEND
- 3 GENERAL NOTES, SUM OF QTYS, DETAILS
- 4 PLAN & PROFILE
- 5 FRSA STANDARD DETAILS rev. 04-01-2026



SIGNED 3/25/2026
EXPIRES 11/30/2027

FOR BID

plot date: 3/30/2026
 file: I:\District Projects\Sanitary Service, 202 N Main Street 2636\01 Design\Drawings (Working Folder)\202 N Main - Cover.dwg
 sheet set: 202 N MAIN

Not to be used for bidding purposes

GENERAL NOTES

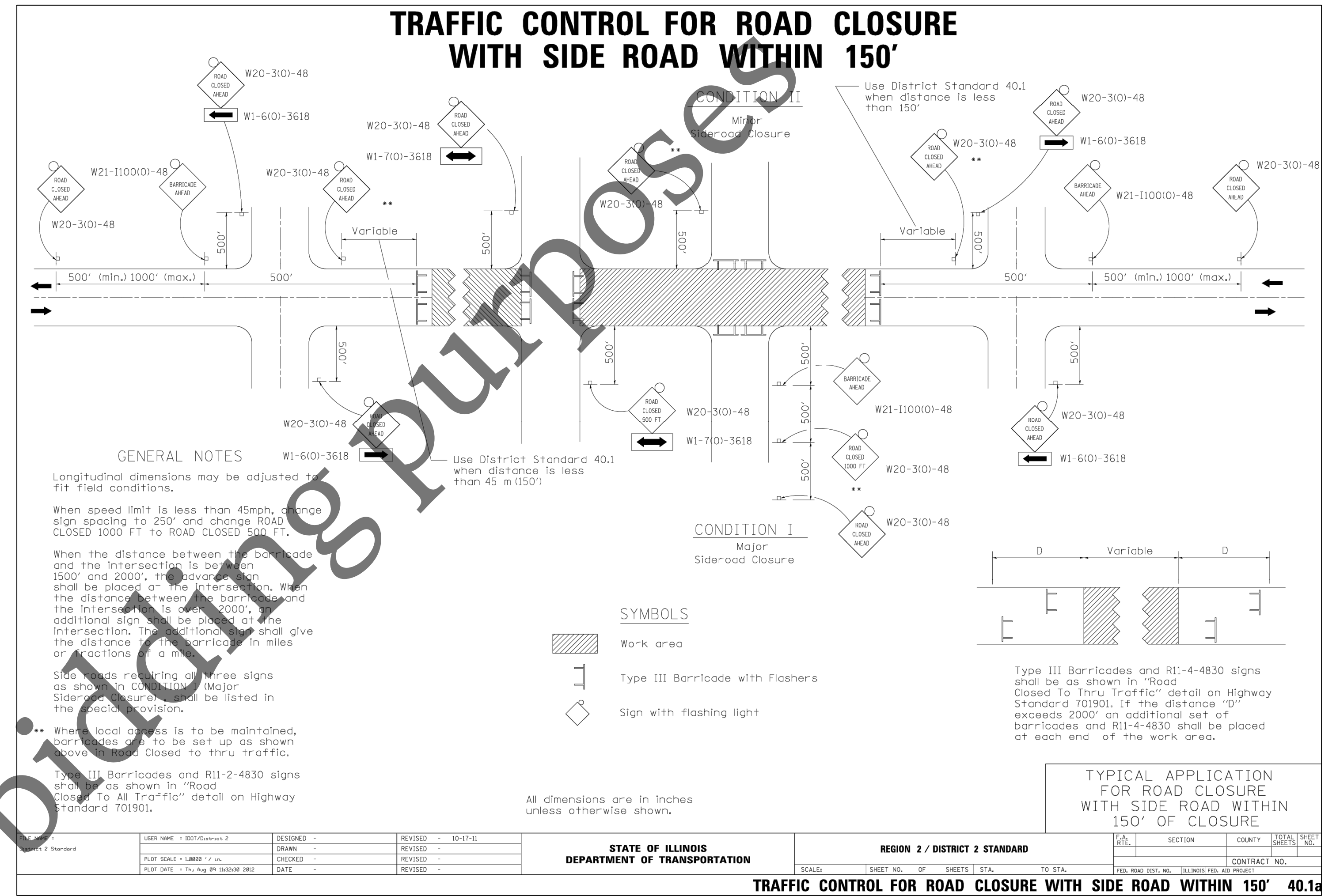
1. THE CONTRACTOR IS SOLELY RESPONSIBLE FOR THE EXECUTION OF WORK TO THE LINES AND GRADES SHOWN ON THE PLANS. CONSTRUCTION SHALL NOT VARY FROM THE PLANS WITHOUT PRIOR APPROVAL FROM THE FOUR RIVERS SANITATION AUTHORITY (FRSA).
2. THE CONTRACTOR SHALL NOTIFY THE FRSA, MUNICIPAL AGENCIES, JURISDICTIONAL ROADWAY AUTHORITIES AND ALL AFFECTED PROPERTY OWNERS A MINIMUM OF 48 HOURS PRIOR TO START OF CONSTRUCTION.
3. ALL SANITARY SEWER CONSTRUCTION SHALL BE IN ACCORDANCE WITH THE STANDARD SPECIFICATIONS FOR WATER AND SEWER CONSTRUCTION IN THE STATE OF ILLINOIS, LATEST EDITION, AND THE REQUIREMENTS OF THE FOUR RIVERS SANITATION AUTHORITY.
4. UTILITY LOCATIONS SHOWN ON THE PLANS ARE BASED ON RECORD INFORMATION AND ARE NOT GUARANTEED. THE CONTRACTOR SHALL IDENTIFY ALL UTILITY LOCATIONS IN THE FIELD BY CONTACTING J.U.L.I.E. AT 811, AND ALL UTILITIES NOT ON THE J.U.L.I.E. NETWORK, 72 HOURS, MINIMUM, PRIOR TO START OF CONSTRUCTION. THE CONTRACTOR SHALL PROTECT, RESTRAIN, OR SUPPORT UTILITIES AND SHALL CONTACT THE UTILITY OWNER FOR PROTECTION PROCEDURE AND SCHEDULE COORDINATION. ALL COSTS ASSOCIATED WITH PROTECTION OF UTILITIES (INCLUDING TUNNELING, RESTRAINT, BRACING, SUPPORTING, SHEATHING, ETC.) WHETHER BY THE CONTRACTOR OR UTILITY COMPANY SHALL BE AT NO ADDITIONAL COST TO THE FRSA.
5. ALL ROADWAY CONSTRUCTION SHALL BE COMPLETED IN ACCORDANCE WITH THE REQUIREMENTS OF THE ROADWAY AUTHORITY, THE IDOT STANDARD SPECIFICATIONS FOR ROAD AND BRIDGE CONSTRUCTION, LATEST EDITION, AND THE FOUR RIVERS SANITATION AUTHORITY.
6. THE CONTRACTOR SHALL COMPLY WITH ALL REQUIREMENTS OF THE IEPA NPDES PERMIT (IF APPLICABLE) AND THE ILLINOIS URBAN MANUAL FOR SOIL EROSION AND SEDIMENT CONTROL.
7. PROTECTION OF WATER SUPPLIES SHALL BE IN ACCORDANCE WITH TITLE 35, C, SECTION 370.350 OF THE ILLINOIS RECOMMENDED STANDARDS FOR SEWAGE WORKS.

SPECIAL CONSIDERATIONS

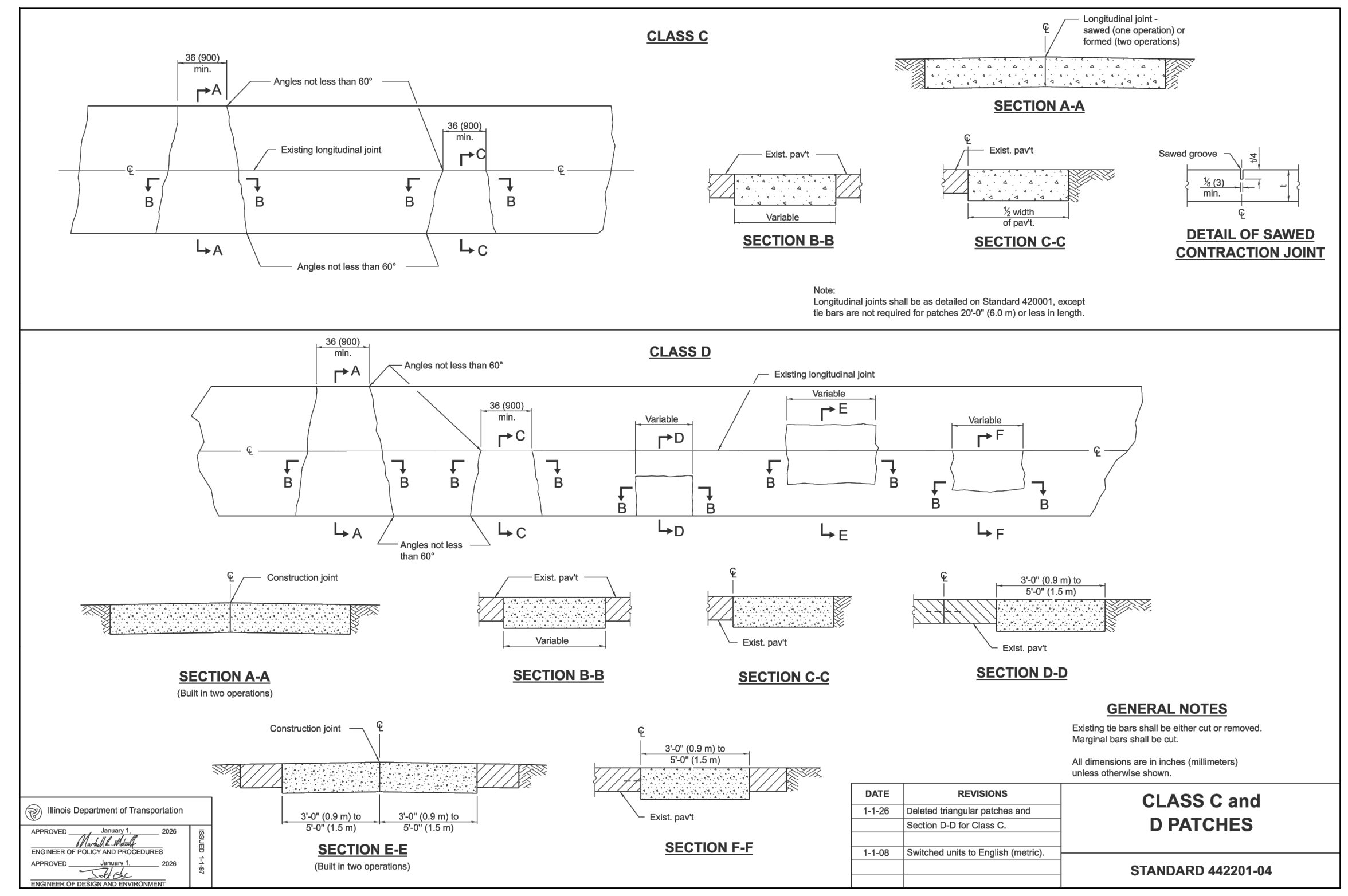
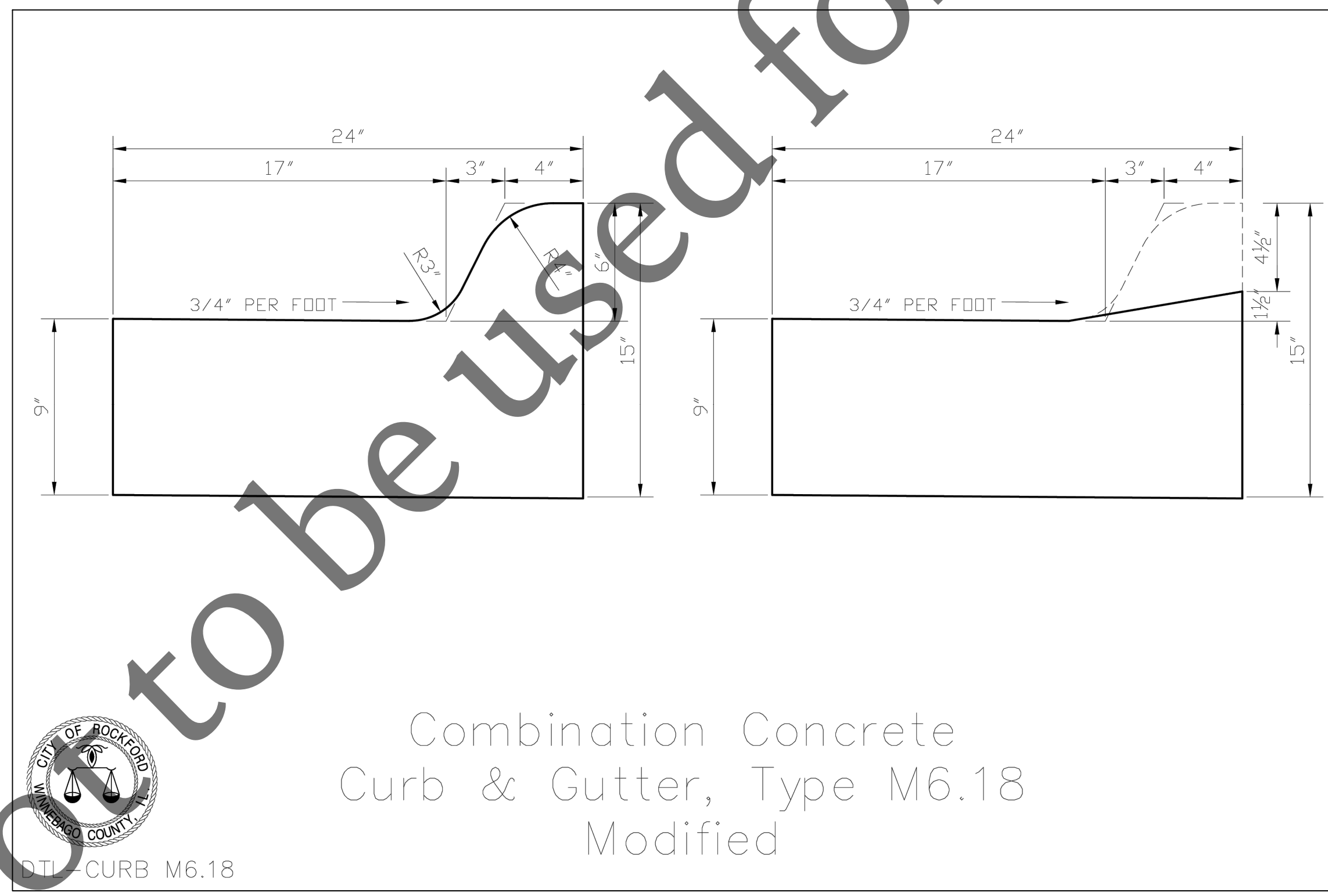
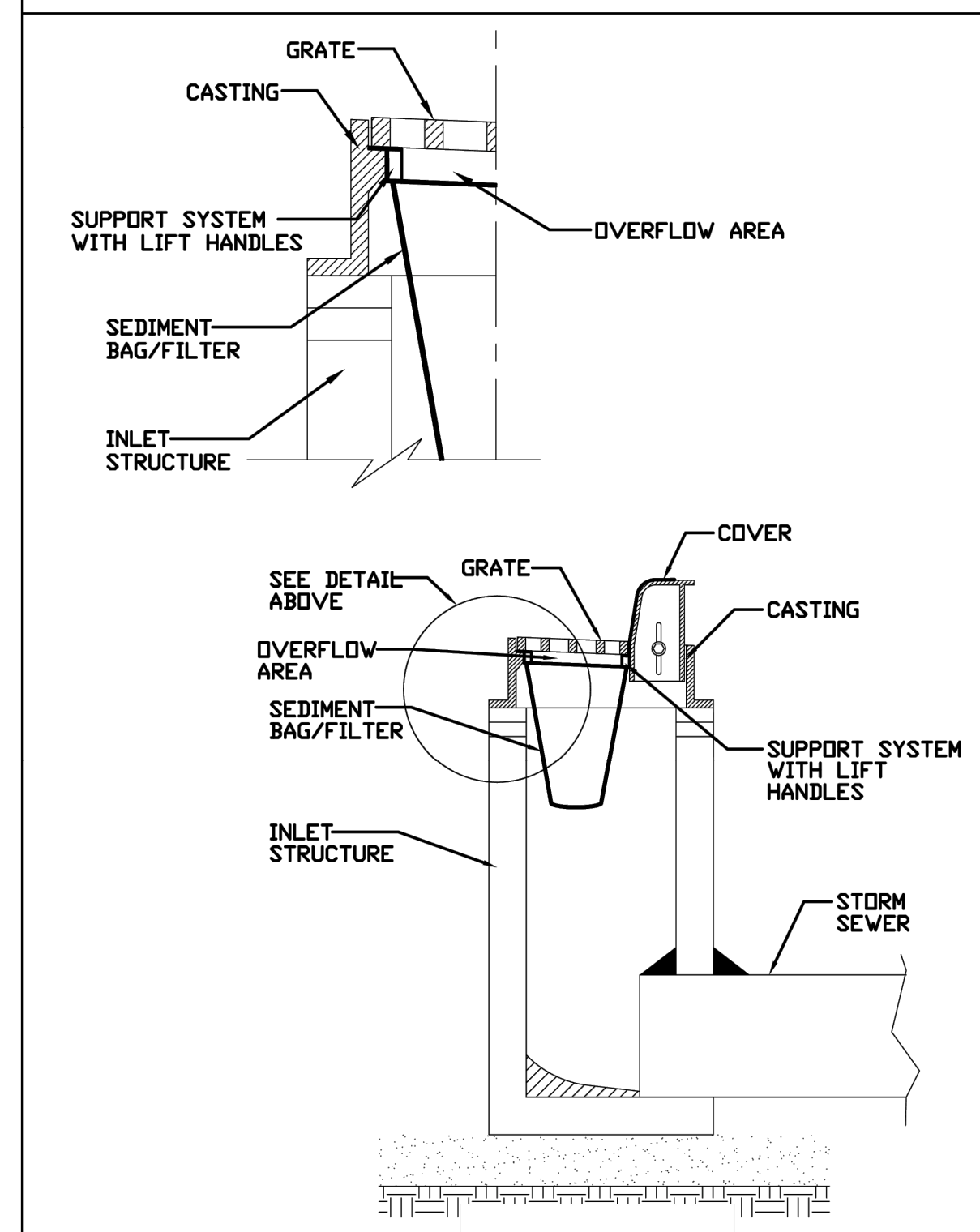
1. TRAFFIC CONTROL SHALL BE IN ACCORDANCE WITH IDOT REGION 2 / DISTRICT 2 STANDARD 40.1 - TRAFFIC CONTROL FOR ROAD CLOSURE WITH SIDE ROAD WITHIN 150'.
2. THE CONTRACTOR SHALL OBTAIN A CITY OF ROCKFORD RIGHT-OF-WAY PERMIT PRIOR TO STARTING ANY WORK. THE CONTRACTOR SHALL PAY ALL ASSOCIATED FEES AND SUBMIT ALL REQUIRED BOND AND INSURANCE INFORMATION TO THE CITY FOR APPROVAL. COPIES OF ALL CITY PERMITS, INCLUDING PROOF OF INSURANCE AND BOND, SHALL BE SUBMITTED TO THE FRSA UPON RECEIPT BY THE CONTRACTOR. ALL COSTS ASSOCIATED WITH CITY OF ROCKFORD PERMITS SHALL BE AT NO ADDITIONAL COST TO THE FRSA.
3. THE CONTRACTOR SHALL COORDINATE WITH THE CITY OF ROCKFORD WATER DIVISION FOR WATER SERVICE INSTALLATION. THE CONTRACTOR SHALL ALLOW THREE (3) BUSINESS DAYS FOR THE CITY TO COMPLETE WORK ASSOCIATED WITH THE WATER SERVICE INSTALLATION PRIOR TO SITE RESTORATION. COORDINATE WITH MATT BAILLARGEON, WATER SUPERINTENDENT, AT (779) 348-7355.
4. PAINT PAVEMENT MARKINGS SHALL MATCH EXISTING IN WIDTH, COLOR, AND POSITION.
5. FIVE STAR PLUMBING IS RESPONSIBLE FOR INTERIOR PLUMBING WORK AT 202 N. MAIN ST. AND IS RESPONSIBLE FOR CONNECTION OF THE BUILDING TO THE PROPOSED SANITARY SEWER SERVICE UNDER SEPARATE FRSA PERMIT. FOLLOWING SUCCESSFUL INSTALLATION OF THE PROPOSED PUBLIC SANITARY SERVICE, THE CONTRACTOR SHALL PROVIDE THREE (3) BUSINESS DAYS FOR FIVE STAR PLUMBING TO MAKE THE PRIVATE SERVICE CONNECTION PRIOR TO SITE RESTORATION. THIS WORK SHALL BE COORDINATED THROUGH FRSA.

SUMMARY OF QUANTITIES

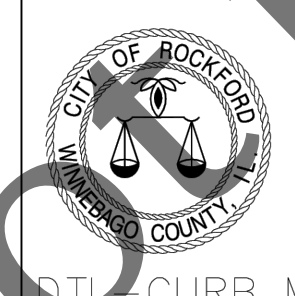
Item No.	Item Description	Unit	Qty.
1	Aggregate Base Course, Type B 12"	SQ YD	52
2	Class D Patches, Type IV, 08"	SQ YD	52
3	Combination Concrete Curb & Gutter, Ty. M6.18 (Modified)	FOOT	30
4	Combination Curb & Gutter Removal	FOOT	30
5	Inlet Filters	EACH	2
6	Paint Pavement Marking - Line 04"	FOOT	24
7	Portland Cement Concrete Sidewalk, 4"	SQ FT	381
8	Sanitary Sewer Service, 6" Dia.	FOOT	14
9	Sidewalk Removal	SQ FT	381
10	Storm Sewer Removal, 21"	FOOT	30
11	Storm Sewers, Class A, Type 2 21"	FOOT	30
12	Traffic Control & Protection, Special	L SUM	1



INLET PROTECTION - PAVED AREAS DROP-IN PROTECTION



REFERENCE	Project	Date	DESIGNED	DATE
Checked			DESIGNED	
Approved			DESIGNED	



Combination Concrete Curb & Gutter, Type M6.18 Modified



No.	DATE	REVISION	INT.

202 N MAIN ST. SANITARY SERVICE
CAPITAL PROJECT #2636

GENERAL NOTES, SUM OF QTYS, DETAILS

FOR BID
Date: 3/30/2026

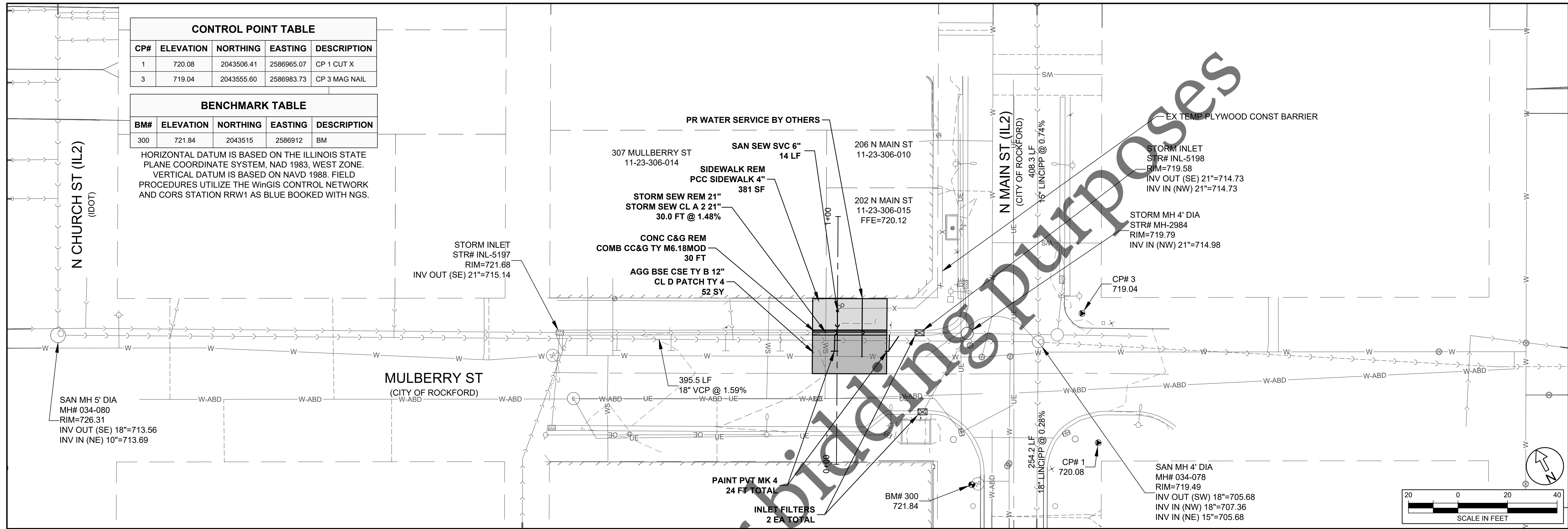
Sheet No. 3 of 5

file: I:\District Projects\Sanitary Service, 202 N Main Street\2636\01 Design\Drawings (Working Folder)\202 N Main - Standard Sheets & Details.dwg

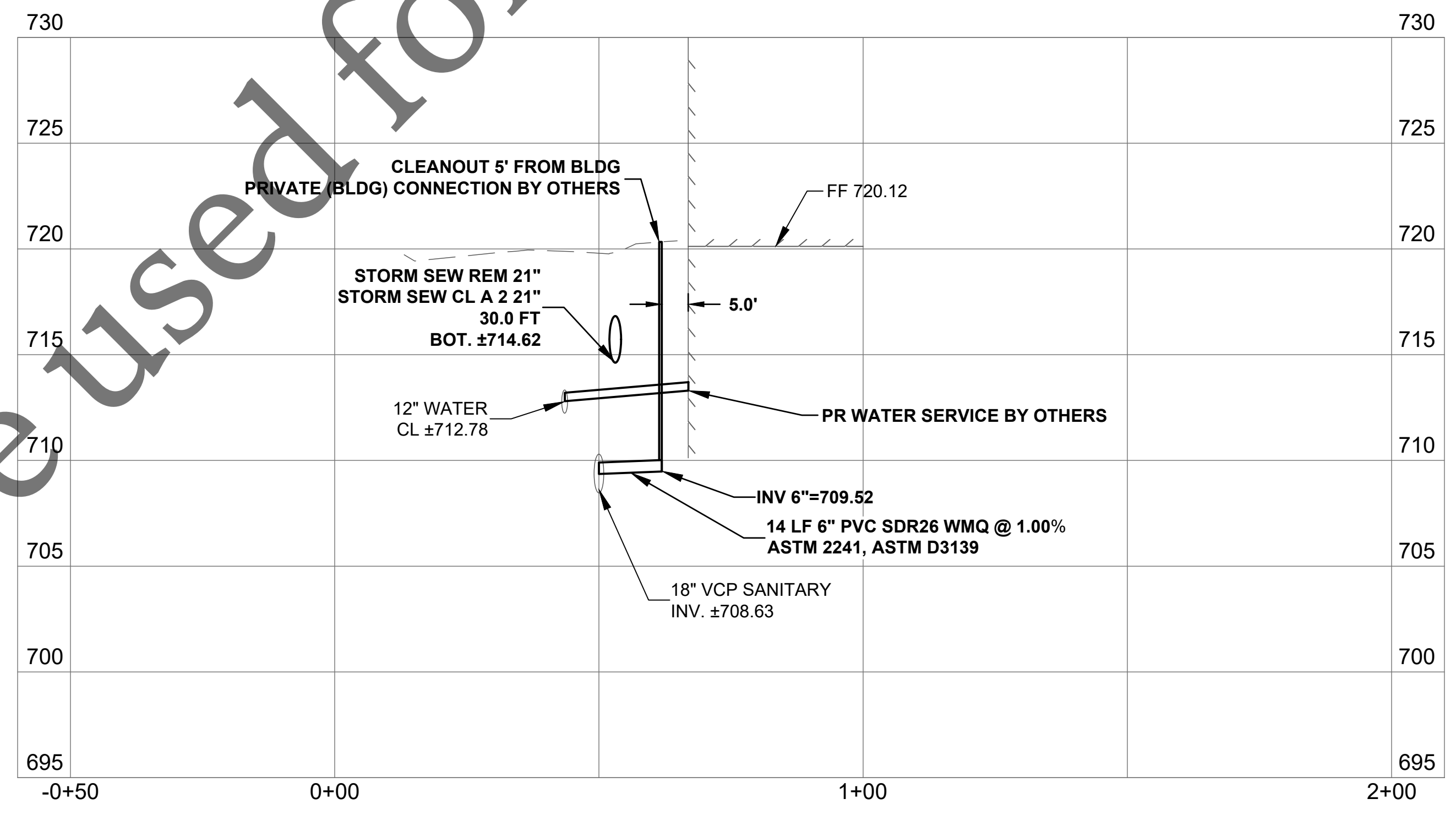
CONTROL POINT TABLE				
CP#	ELEVATION	NORTHING	EASTING	DESCRIPTION
1	720.08	2043506.41	2586965.07	CP 1 CUT X
3	719.04	2043555.60	2586983.73	CP 3 MAG NAIL

BENCHMARK TABLE				
BM#	ELEVATION	NORTHING	EASTING	DESCRIPTION
300	721.84	2043515	2586912	BM

HORIZONTAL DATUM IS BASED ON THE ILLINOIS STATE PLANE COORDINATE SYSTEM, NAD 1983, WEST ZONE. VERTICAL DATUM IS BASED ON NAVD 1988. FIELD PROCEDURES UTILIZE THE WinGIS CONTROL NETWORK AND CORS STATION RRW1 AS BLUE BOOKED WITH NGS.



- NOTE:
1. ALL PAVEMENT, CURB & GUTTER, SIDEWALK, AND STORM SEWER ELEVATIONS AND PAVEMENT MARKING LAYOUT SHALL MATCH EXISTING.
 2. THE CONTRACTOR SHALL COORDINATE WITH THE CITY OF ROCKFORD WATER DIVISION FOR WATER SERVICE INSTALLATION. THE CONTRACTOR SHALL ALLOW THREE (3) BUSINESS DAYS FOR THE CITY TO COMPLETE WORK ASSOCIATED WITH THE WATER SERVICE INSTALLATION PRIOR TO SITE RESTORATION. COORDINATE WITH MATT BAILLARGEON, WATER SUPERINTENDENT, AT (779) 348-7355.
 3. FIVE STAR PLUMBING IS RESPONSIBLE FOR INTERIOR PLUMBING WORK AT 202 N. MAIN ST. AND IS RESPONSIBLE FOR CONNECTION OF THE BUILDING TO THE PROPOSED SANITARY SEWER SERVICE UNDER SEPARATE FRSA PERMIT. FOLLOWING SUCCESSFUL INSTALLATION OF THE PROPOSED PUBLIC SANITARY SERVICE, THE CONTRACTOR SHALL PROVIDE THREE (3) BUSINESS DAYS FOR FIVE STAR PLUMBING TO MAKE THE PRIVATE SERVICE CONNECTION PRIOR TO SITE RESTORATION. THIS WORK SHALL BE COORDINATED THROUGH FRSA.



file: I:\District Projects\Sanitary Service, 202 N Main Street\Drawings (Working Folder)\202 N Main - Design.dwg



No.	DATE	REVISION	INT.

**202 N MAIN ST. SANITARY SERVICE
CAPITAL PROJECT #2636**

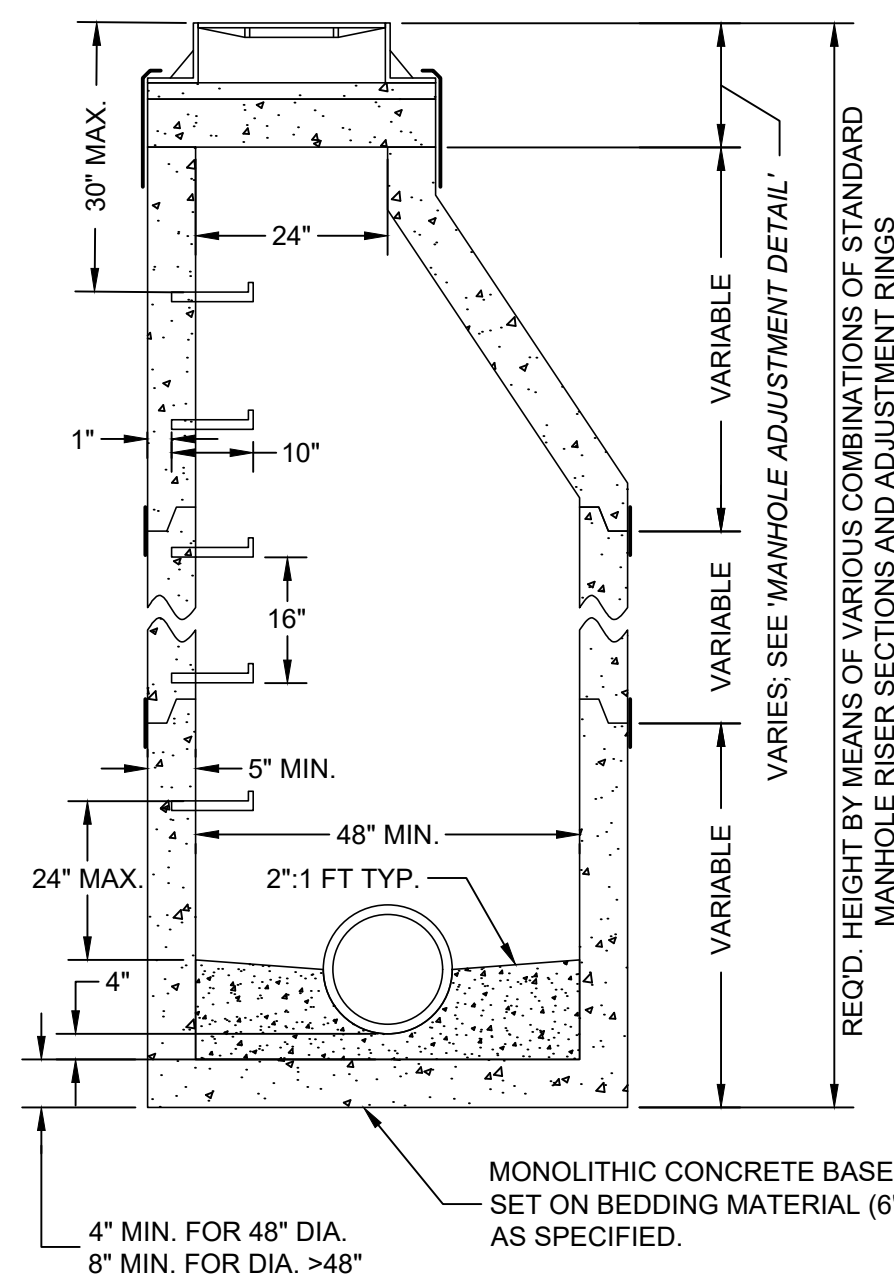
PLAN & PROFILE

FOR BID

Sheet No.
4 of 5

Date:
3/30/2026

- NOTES:**
1. THE MAX. DROP FROM THE INVERT OF ANY PIPE TO THE CONCRETE CHANNEL UNDER THAT PIPE SHALL BE 8".
 2. MANHOLES LOCATED OUTSIDE OF PUBLIC RIGHT-OF-WAY SHALL BE MARKED WITH A STEEL FENCE POST AS DIRECTED.
 3. ALL NEW MANHOLES SHALL BE VACUUM TESTED PER A.S.T.M. C-1244 PRIOR TO ACCEPTANCE.
 4. ALL BARREL JOINTS SHALL BE SEALED WITH 3 1/2" x 3/8" PRE-FORMED RUBBER BUTYL JOINT SEALANT ON THE LOWER SHIPLAP.
 5. ALL BARREL JOINTS SHALL BE SEALED WITH AN EXTERNAL BARREL SEAL CENTERED ON THE JOINT (MAR MAC MACWRAP, OR APPROVED EQUAL).
 6. MANHOLE STRUCTURE SHALL BE CONSTRUCTED OF PRECAST REINFORCED CONCRETE MANHOLE RISER SECTIONS IN ACCORDANCE WITH A.S.T.M. C478-90 OR THE LATEST DESIGNATION.
 7. PRECAST FLAT TOPS ARE NOT APPROVED FOR USE.
 8. SEE 'MANHOLE ADJUSTMENT DETAIL' FOR ADJUSTMENT REQUIREMENTS.
 9. PIPE CONNECTIONS TO NEW MANHOLES SHALL BE MADE BY MEANS OF EITHER RUBBER GASKET SEAL (A-LOK OR APPROVED EQUAL) CONFORMING TO ASTM C-923 CAST INTEGRALLY IN MANHOLE WALL, OR RUBBER GASKET SEAL AND STAINLESS STEEL CLAMP (PSX SERIES SIX OR APPROVED EQUAL) CONFORMING TO ASTM C-923. FOR PIPE CONNECTIONS WITH A DEPTH OF >20 FT., A RUBBER GASKET SEAL (A-LOK OR APPROVED EQUAL) CONFORMING TO ASTM C-923 CAST INTEGRALLY IN MANHOLE WALL SHALL BE USED.
 10. PIPE CONNECTIONS TO EXISTING MANHOLES SHALL BE MADE BY MEANS OF CORE DRILLING MANHOLE WALL AND INSTALLING RUBBER GASKET SEAL AND STAINLESS STEEL CLAMP (PSX SERIES SIX OR APPROVED EQUAL) CONFORMING TO ASTM C-923.
 11. THE MAXIMUM DISTANCE FROM ANY INLET PIPE INVERT TO THE OUTLET PIPE INVERT SHALL BE 2'. DISTANCES GREATER THAN 2' WILL REQUIRE AN INSIDE DROP CONNECTION PER 'INSIDE DROP CONNECTION DETAIL'.
 12. MANHOLE STEPS SHALL BE NEENAH R-1982-F OR M.A. IND. PS-1 OR APPROVED EQUAL INSTALLED AT 16" CENTERS, ORIENTED ABOVE THE OUTLET PIPE UNLESS OTHERWISE SPECIFIED. FOR MANHOLES WITH INSIDE DROP ASSEMBLIES, STEPS IN THE MANHOLE BASE SECTION SHALL BE INSTALLED IN THE FIELD AND NOT CAST IN PLACE. IN THIS CASE, THE ORIENTATION OF THE CONE SHALL BE AS DIRECTED BY FRSA.

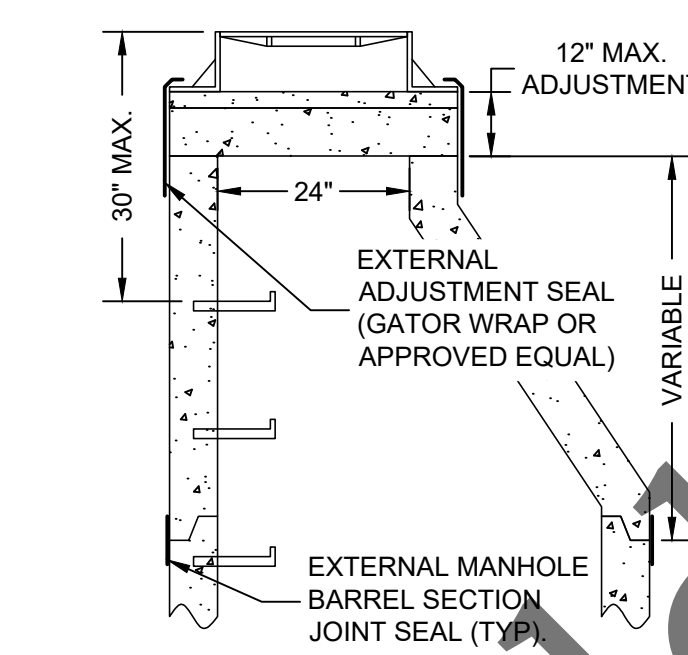


STANDARD MANHOLE DETAIL
(*MANHOLE ADJUSTMENT DETAIL* SHALL APPLY)

- NOTES:**
1. MANHOLE FRAMES & LIDS SHALL BE PER THE TABLE BELOW.
 2. FOR MANHOLES CONNECTED TO MAINS 18" DIAMETER OR LARGER, OR FOR MANHOLES LOCATED IN FLOOD PRONE AREAS, FRAMES & LIDS SHALL BE THE BOLT DOWN TYPE.
 3. ALLOWABLE TYPES OF ADJUSTING RINGS INCLUDE PRECAST CONCRETE (4" HEIGHT MIN.), & EXPANDED POLYPROPYLENE (EPP). THESE CAN BE USED IN CONJUNCTION WITH EACH OTHER, EXCEPT THAT A PRECAST RING SHALL NOT BE PLACED OVER AN EPP RING.
 4. FOR PRECAST ADJUSTING RINGS, ALL ADJUSTING RING JOINTS AS WELL AS THE FRAME TO ADJUSTING RING JOINT SHALL BE SEALED WITH TWO 1" BEADS OF PRE-FORMED RUBBER BUTYL JOINT SEALANT. WHEN A FRAME REQUIRES PITCHING, EPP TAPER RINGS SHALL BE USED PER NOTE 5.
 5. FOR EPP ADJUSTING RINGS, RINGS SHALL BE INSTALLED ACCORDING TO MANUFACTURER'S INSTRUCTIONS. WHEN A FRAME REQUIRES PITCHING, THE TOP RING SHALL BE A TAPERED ADJUSTMENT RING PER MANUFACTURER'S INSTRUCTIONS.
 6. NO TARRING OR GROUTING IS ALLOWED ON THE INSIDE OF MANHOLE OR ADJUSTMENT JOINTS.
 7. MAXIMUM MANHOLE ADJUSTMENT IS 12". MINIMUM ADJUSTMENT IS 4" UNLESS OFF-ROAD OR IN CURB & GUTTER ROADWAY.
 8. MANHOLE FRAMES SHALL BE SET 1/4" MIN. TO 3/8" MAX. BELOW PAVED SURFACES, AND AT FINAL GRADE IN TURF AREAS.
 9. WHEN ADJUSTING EXISTING MANHOLES, THE ENTIRE EXISTING ADJUSTMENT SHALL BE REMOVED AND REPLACED.

APPROVED FRAME & LID TABLE

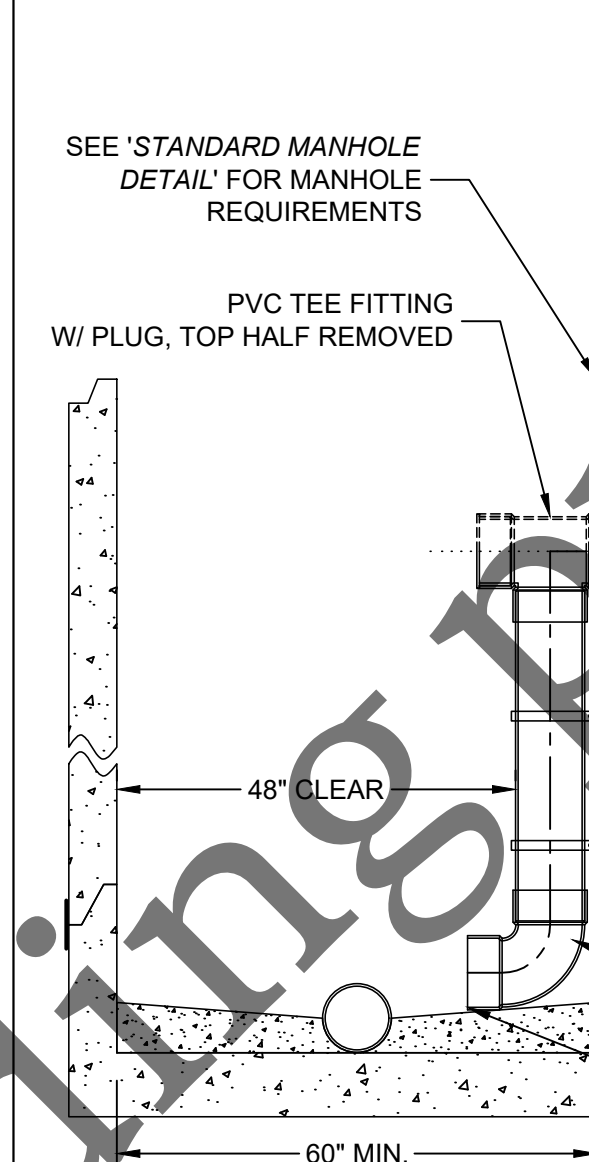
TYPE	NEENAH FRAME	NEENAH LID	EAST JORDAN FRAME	EAST JORDAN LID
REGULAR	1670-2004	R-1670-0358	00111711	00111732
LOW PROFILE	1670-2008	R-1670-0358	---	---
BOLT DOWN	1915JT08	---	---	---



MANHOLE ADJUSTMENT DETAIL
(FOR ADJUSTMENT OF BOTH NEW & EXISTING MANHOLES)

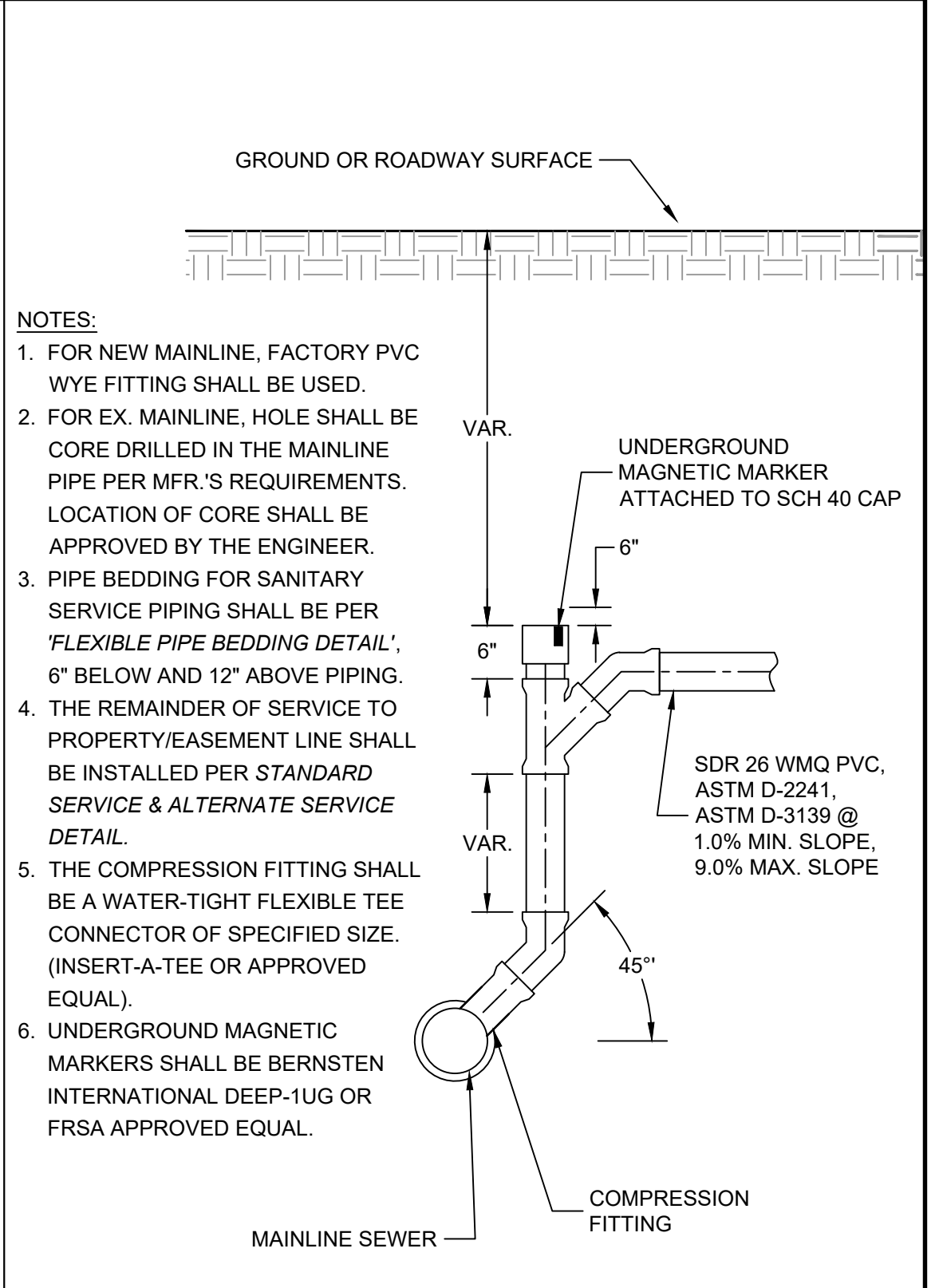
MANHOLE & DROP PIPE SIZING TABLE

INLET PIPE DIA.	MANHOLE I.D.	DROP PIPE DIA.
4-6 INCH	60 INCH	4 INCH
8 INCH	60 INCH	8 INCH
10 INCH	60 INCH	8 INCH
12 INCH	60 INCH	8 INCH
> 12 INCH	AS DIRECTED BY FRSA	



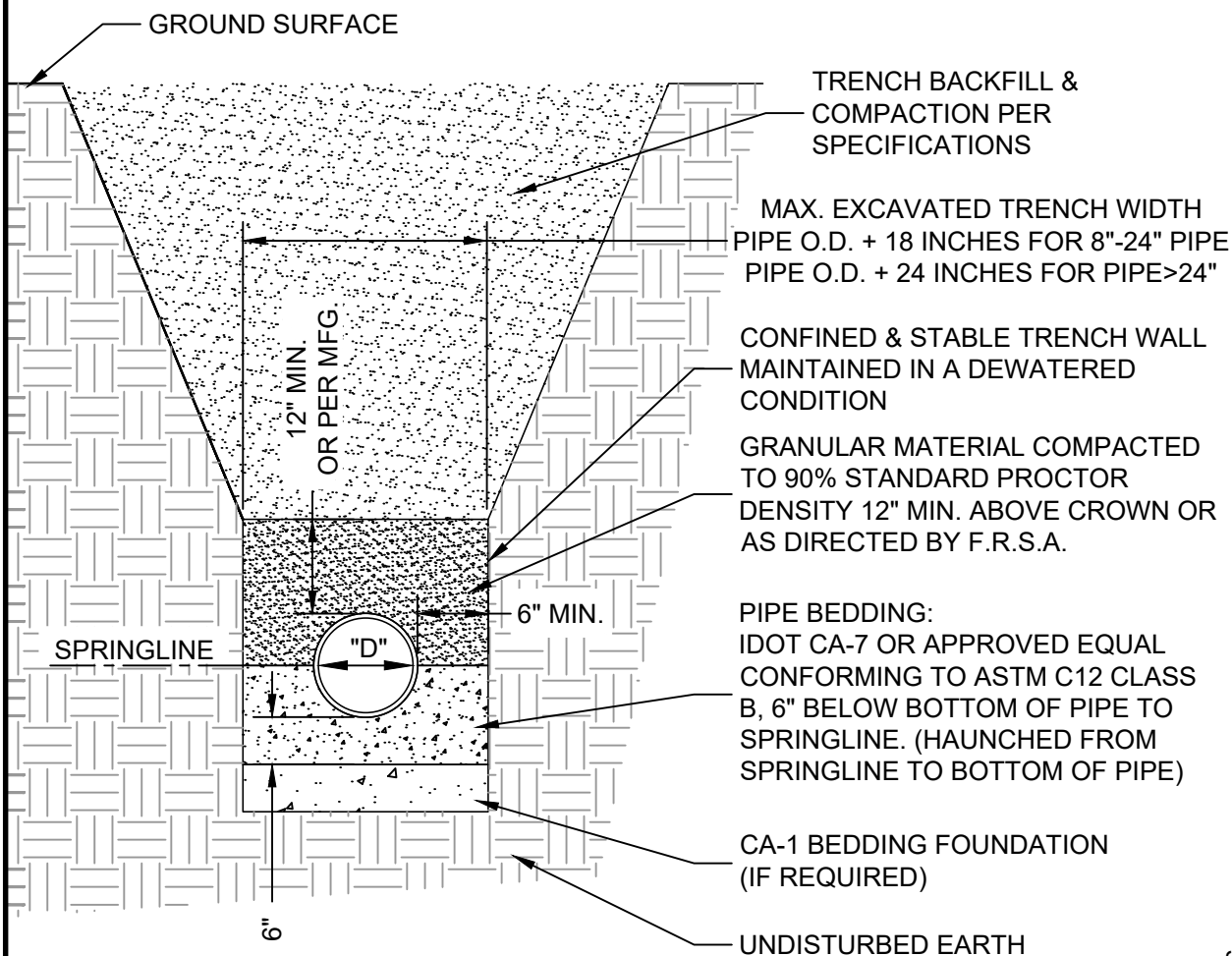
INSIDE DROP CONNECTION DETAIL
(*STANDARD MANHOLE DETAIL* SHALL APPLY)

- NOTES:**
1. INSIDE DROP TYPE MANHOLES SHALL BE 5' MIN. INSIDE DIA.
 2. ALL INSIDE DROP PIPING & FITTINGS SHALL BE PVC SCH 40 ASTM D1785 FOR ASTM D2241 INCOMING PIPE, OR SDR 35 ASTM D3034 FOR ASTM D3034 INCOMING PIPE WITH GLUED JOINTS.
 3. ATTACH EACH CLAMPING BRACKET TO THE MANHOLE WALL WITH 3/8" x 1" MIN. STAINLESS STEEL BOLTS AND EPOXY IMPREGNATED LUGS PER MFR.'S RECOMMENDATIONS.
 4. THE UPSTREAM END OF THE PVC TEE FITTING SHALL BE POSITIONED AT THE MIDDLE OF THE MANHOLE WALL.
 5. PVC TEE FITTING SHALL INCLUDE A PLUS. THE TOP HALF OF THE FITTING AND PLUG SHALL BE REMOVED TO THE INSIDE MANHOLE WALL.



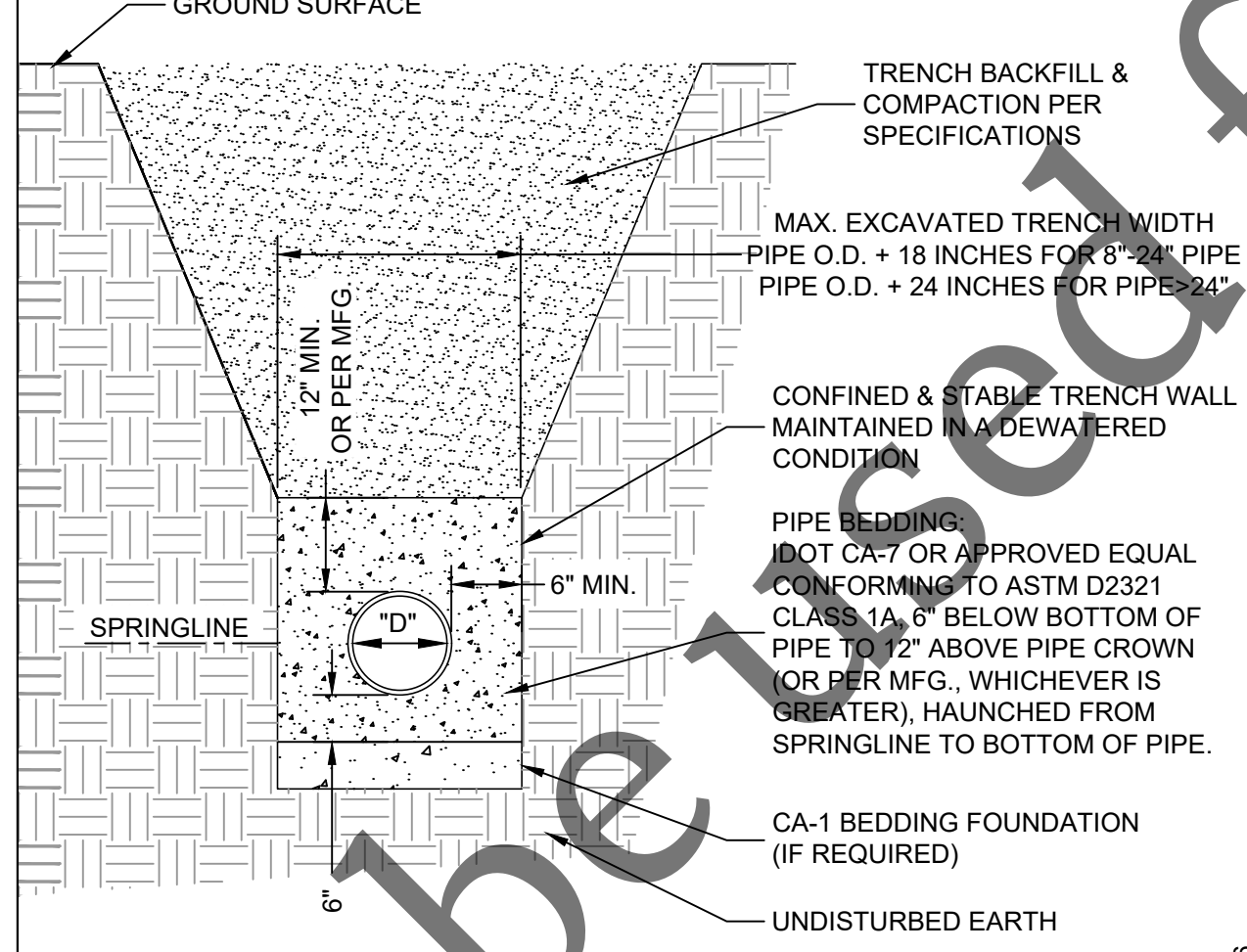
VERTICAL SERVICE RISER DETAIL

- NOTES:**
1. REASONABLE CARE SHALL BE USED WHEN BACKFILLING OVER SEWER. NO MATERIALS SUCH AS ROCKS OR BOULDERS SHALL BE PLACED WITHIN 24" OF THE CROWN OF THE PIPE. NO MATERIAL LARGER THAN 8" DIA. SHALL BE USED IN THE BACKFILL.
 2. LOOSE MATERIAL SHALL BE REMOVED OR COMPACTED PRIOR TO PLACING PIPE BEDDING.
 3. BEDDING SHALL BE WELL HAUNCHED ALONG PIPE TO ENSURE VOIDS ARE ELIMINATED.

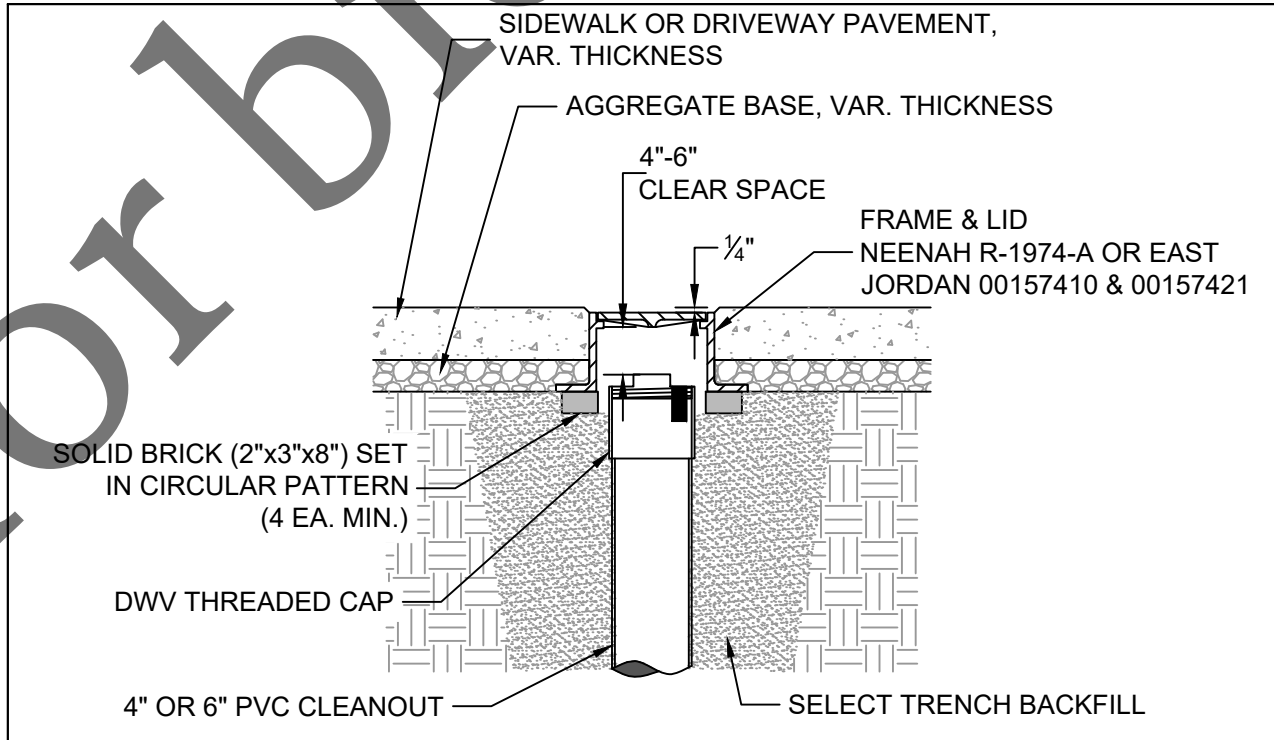


RIGID PIPE BEDDING DETAIL

- NOTES:**
1. REASONABLE CARE SHALL BE USED WHEN BACKFILLING OVER SEWER. NO MATERIALS SUCH AS ROCKS OR BOULDERS SHALL BE PLACED WITHIN 24" OF THE CROWN OF THE PIPE. NO MATERIAL LARGER THAN 8" DIA. SHALL BE USED IN THE BACKFILL.
 2. LOOSE MATERIAL TO BE REMOVED OR COMPACTED PRIOR TO PLACING PIPE BEDDING.
 3. BEDDING SHALL BE WELL HAUNCHED ALONG PIPE TO ENSURE VOIDS ARE ELIMINATED.



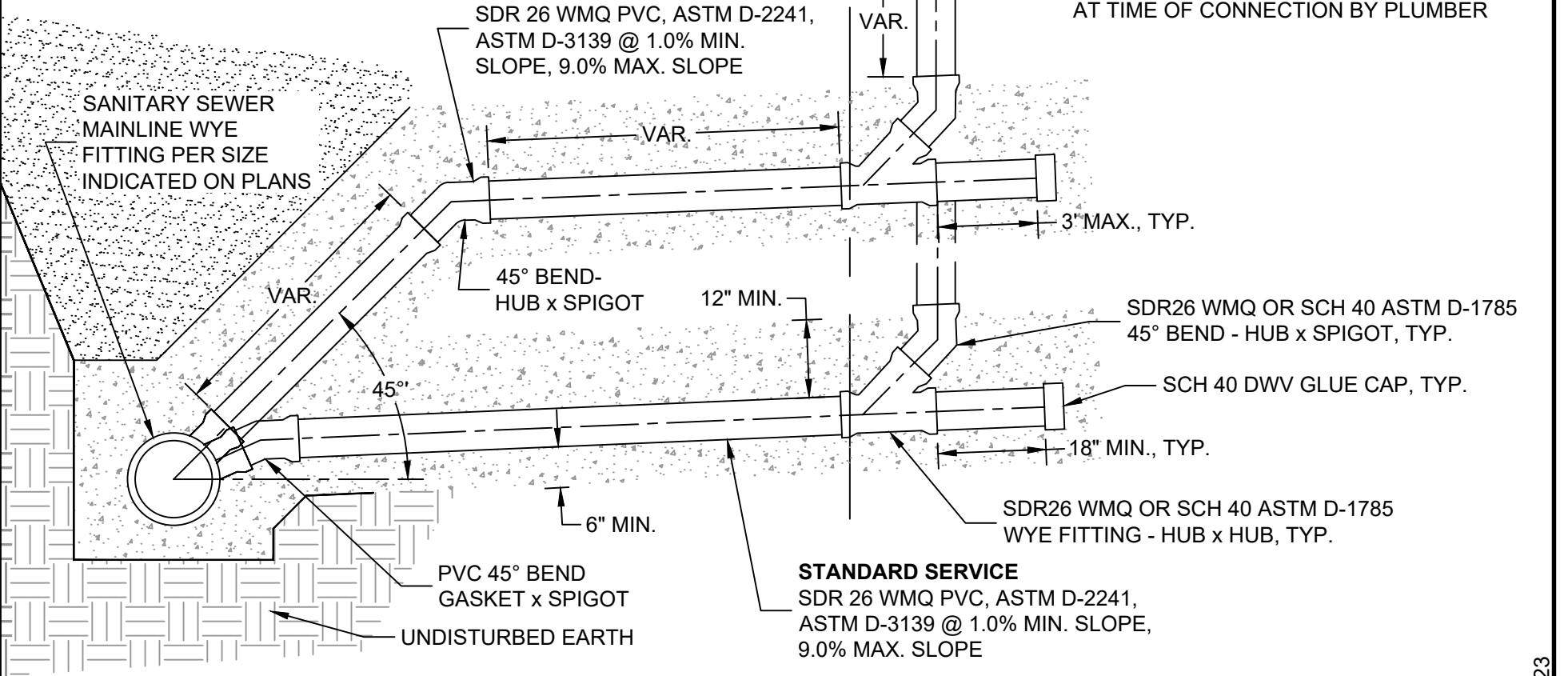
FLEXIBLE PIPE BEDDING DETAIL



- NOTES:**
1. SERVICE CLEANOUT CASTINGS ARE REQUIRED FOR ALL CLEANOUTS LOCATED IN PAVED AREAS, DRIVEWAYS, OR SIDEWALKS.
 2. THE LOCATION OF THE CLEANOUT SHALL BE APPROVED BY FOUR RIVERS SANITATION AUTHORITY (FRSA).
 3. THE FRAME SHALL BE SET ON BRICKS THAT ARE PLACED IN A CIRCULAR PATTERN THE ENTIRE CIRCUMFERENCE OF THE FRAME. THE BRICKS SHALL BE SET ON COMPACTED TRENCH BACKFILL.
 4. THE FRAME SHALL BE SET TO AN ELEVATION THAT PROVIDES 4"-6" CLEAR SPACE BETWEEN THE TOP OF THE CLEANOUT CAP AND THE BOTTOM OF THE CASTING LID.
 5. THE CONTRACTOR SHALL ENSURE THAT THE CLEANOUT CAP CAN BE UNSCREWED AND REMOVED AND REPLACED WITHOUT HINDRANCE.
 6. THE FRAME SHALL BE SET 1/4" MIN. TO 3/8" MAX. BELOW FINAL PAVEMENT ELEVATION.

SERVICE CLEANOUT CASTING DETAIL

- NOTES:**
1. SANITARY SEWER MAINLINE SHALL BE INSTALLED PER 'FLEXIBLE PIPE BEDDING DETAIL' OR 'RIGID PIPE BEDDING DETAIL'.
 2. PIPE BEDDING FOR SANITARY SERVICE PIPING SHALL BE PER 'FLEXIBLE PIPE BEDDING DETAIL', 6" BELOW AND 12" ABOVE PIPING.
 3. ALL SCH 40 PVC PIPE & FITTINGS SHALL BE PER ASTM D-1785/D-2665.
 4. ALL SDR26 WMQ PVC PIPE & FITTINGS SHALL BE PER ASTM D-2241/D-3139.
 5. ALL DWV FITTINGS SHALL BE CLEANED, PRIMED, & GLUED.
 6. MIN. DEPTH OF COVER SHALL BE 5'.
 7. CLEANOUT CAP SHALL BE SCH 40 DWV GLUED CAP FOR NEW DEVELOPMENT OR SCH 40 GLUED SCREW CAP FOR EX. DEVELOPMENT.
 8. CLEANOUT RISERS LOCATED IN PAVED AREAS, DRIVEWAYS, OR SIDEWALKS SHALL WILL REQUIRE A CLEANOUT FRAME & LID PER THE FRSA 'SERVICE CLEANOUT CASTING DETAIL'.

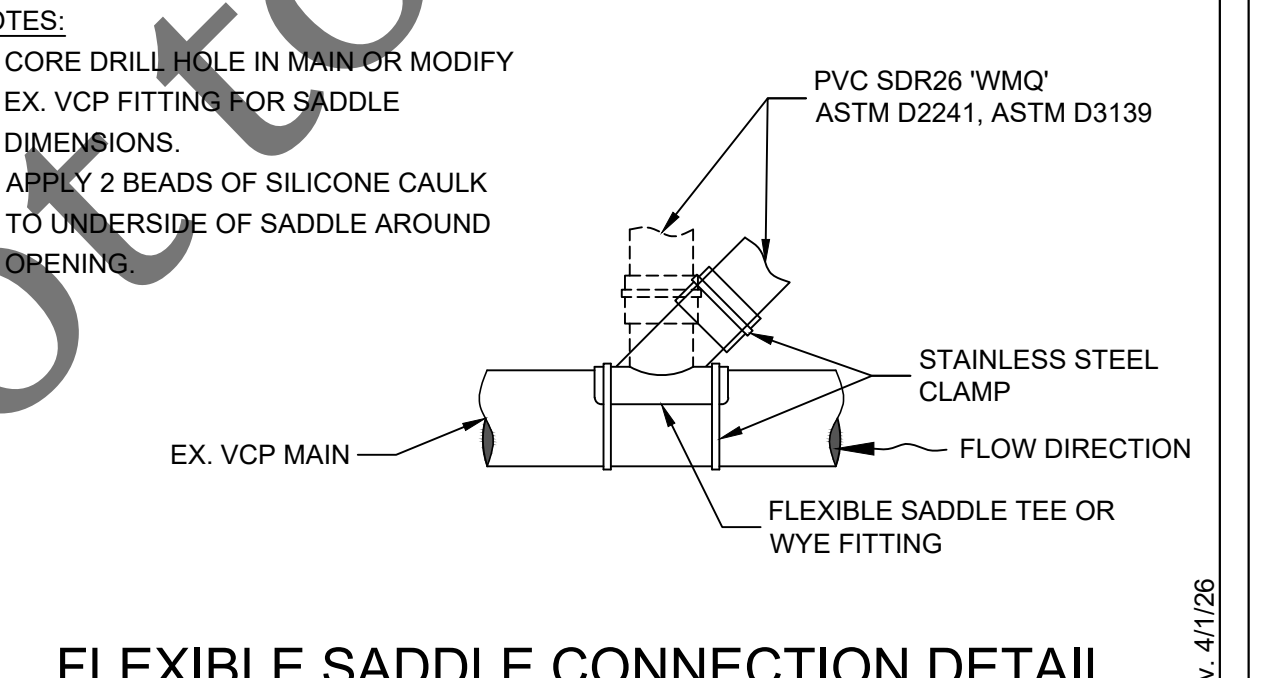


STANDARD SERVICE & ALTERNATE SERVICE DETAIL

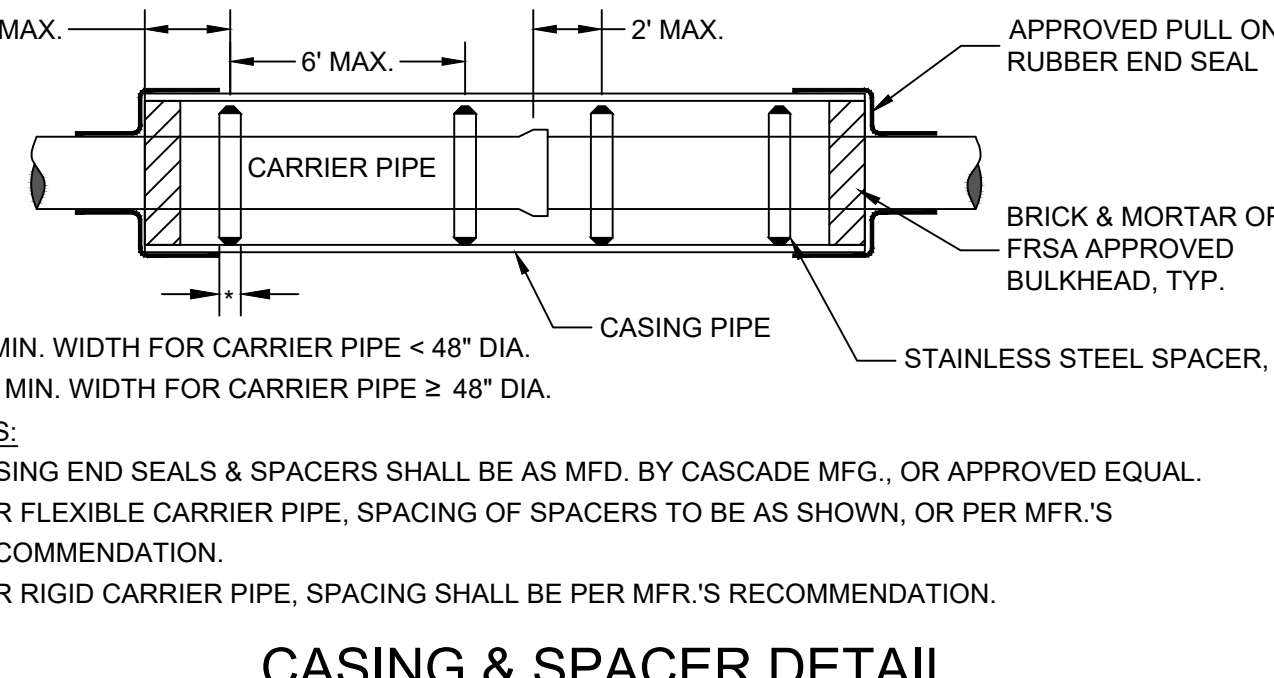
ACCEPTABLE SERVICE / MAIN CONNECTION TABLE

TYPE OF MAIN	TYPE OF CONNECTION	DETAIL
NEW, <18" DIA	FACTORY PVC WYE	STANDARD SERVICE DETAIL *
NEW, ≥18" DIA	FACTORY PVC WYE COMPRESSION FITTING	VERTICAL SERVICE RISER DETAIL
EXIST, <18" DIA	VCP	FLEXIBLE SADDLE
	NON-VCP	COMPRESSION FITTING
	ALL	CUT-IN FACTORY WYE
EXIST, ≥18" DIA	ALL	VERTICAL SERVICE RISER DETAIL OR ALTERNATE SERVICE DETAIL**

* ALL MAINS ≥13" DEEP SHALL HAVE AN ALTERNATE OR VERTICAL SERVICE RISER.
** REQUIRES FRSA APPROVAL.



FLEXIBLE SADDLE CONNECTION DETAIL



CASING & SPACER DETAIL

01/01/2021 Revisions:
 Manhole Adjustment Detail: Revised notes 1 & 2 with acceptable frames & lids. Modified notes 3, 5, & 7. Added note 8.
 Revised Rock River Reclamation District to 'Four Rivers Sanitation Authority'.
 Inside Drop Connection Detail: Revised note 6 & 7. Added note 8.
 Service Cleanout Casting Detail: Added this detail.