

# FOUR RIVERS SANITATION AUTHORITY

## HOUSEHOLD HAZARDOUS WASTE SITE CAPITAL IMPROVEMENT PROJECT #2217

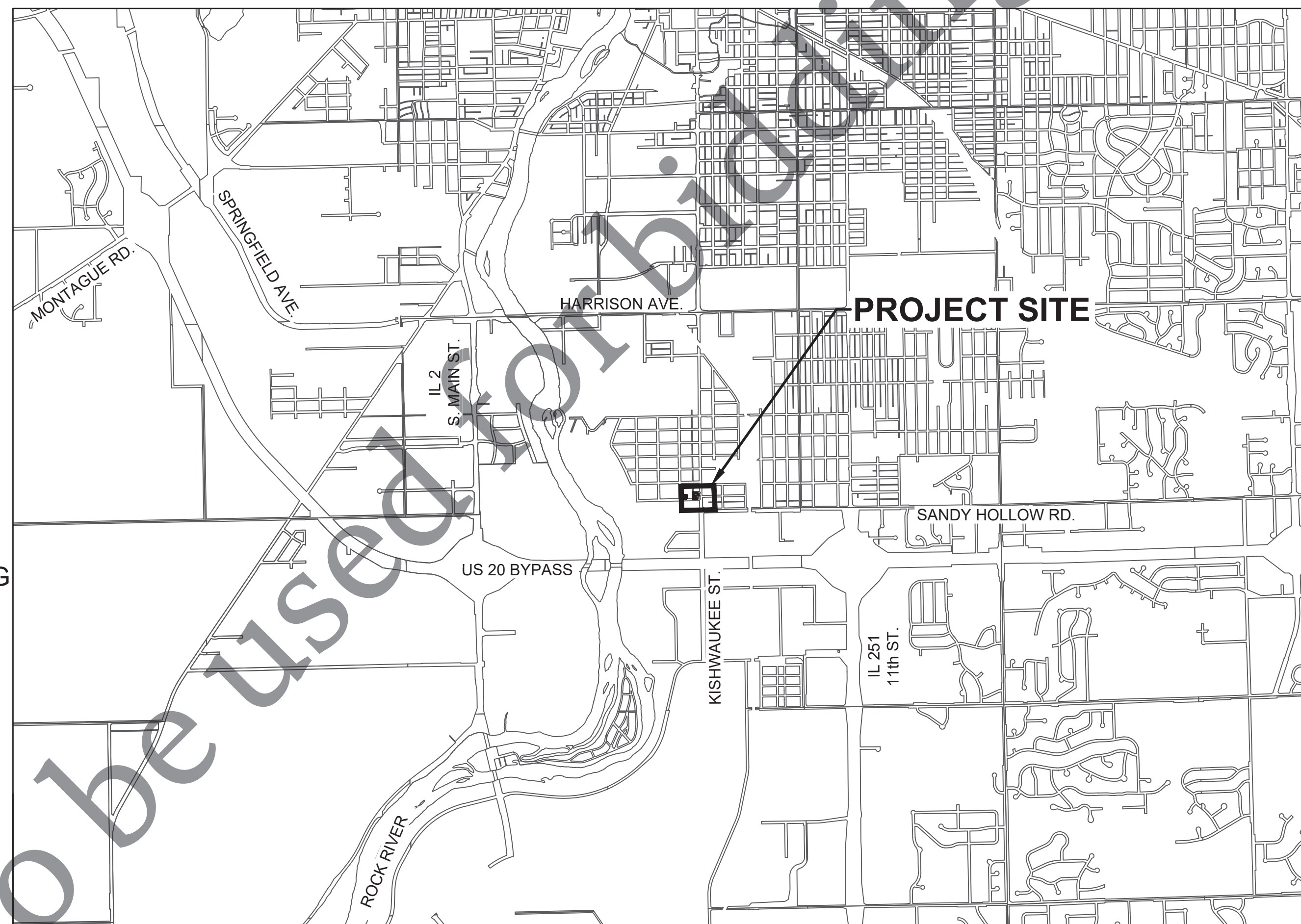
### 2024

#### BOARD OF TRUSTEES

RICHARD T. POLLACK	PRESIDENT
BENJAMIN W. BERNSTEN	VICE-PRESIDENT
GINGER HAAS	CLERK/TREASURER
ELMER JONES	TRUSTEE
RICHARD MOWRIS	TRUSTEE

#### OFFICIALS

TIMOTHY S. HANSON	EXECUTIVE DIRECTOR
CHRISTOPHER T. BAER, PE	DIRECTOR OF ENGINEERING



WINNEBAGO COUNTY, ILLINOIS

#### INDEX OF SHEETS

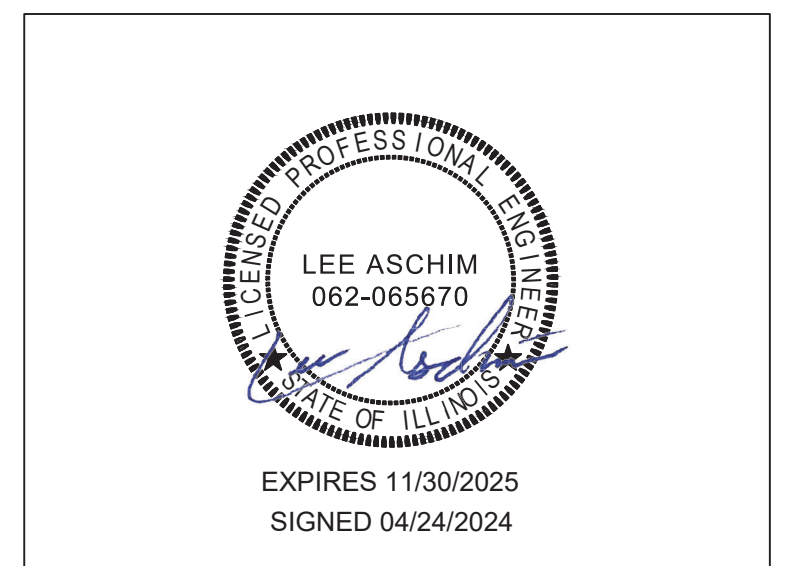
Sheet Number	Sheet Title
COVER	COVER
G001	LEGEND GENERAL NOTES & SUM OF QTYS
C100	EXISTING CONDITIONS & REMOVALS PLAN
C101	SITE LAYOUT PLAN
C102	SITE GRADING PLAN
C103	SITE UTILITY PLAN
C104	EROSION CONTROL PLAN
C105	TEMPORARY EROSION CONTROL DETAILS
C106	PROJECT DETAILS
C107	LANDSCAPE PLAN

#### IDOT STANDARD DETAILS:

- 280001-07 TEMPORARY EROSION CONTROL SYSTEMS
- 606001-08 CONCRETE CURB TYPE B
- 701006-05 OFF-RD OPERATIONS FROM 15' TO 24" FROM PAVEMENT EDGE
- 701301-04 LANE CLOSURE SHORT TIME OPERATIONS
- 701502-09 URBAN LANE CLOSURE WITH BIDIRECTIONAL LEFT TURN LANE
- 701801-06 SIDEWALK, CORNER, OF CROSSWALK CLOSURE
- 701901-09 TRAFFIC CONTROL DEVICES



THIS PLAN SET CONTAINS INFORMATION FOR THE COMPLETE PROJECT. WORK UNDER THIS BID INCLUDES FINAL SHAPING OF AGGREGATE, HMA PAVING OPERATIONS, AND PAVEMENT MARKINGS. OTHER INFORMATION SHOWN WITHIN PLAN SET TO BE BY OTHERS AND FOR INFORMATION ONLY.



FOR BID

Not to be used for bidding purposes



file: I:\District Projects\Household Hazardous Waste Site 2062101 Design\Drawings\HHW - Design.dwg

**LEGEND**

EXISTING	PROPOSED	
		RIGHT OF WAY LINE
		PROPERTY LINE
		BUILDING
		WATER EDGE
		EASEMENT - PERMANENT SANITARY
		EASEMENT - TEMPORARY CONSTRUCTION
		VEGETATION / TREE LINE
		TREE DRIPLINE
		CONTOUR - MAJOR
		CONTOUR - MINOR
		FENCE
		FENCE - TEMPORARY CONSTRUCTION
		FENCE - SILT (PERIMETER EROSION BARRIER)
		ROADWAY CENTERLINE
		EDGE OF PAVEMENT
		CURB & GUTTER
		GUARD RAIL
		RAILROAD TRACKS
		CABLE - OVERHEAD
		CABLE - UNDERGROUND
		ELECTRIC - OVERHEAD
		ELECTRIC - UNDERGROUND
		FIBER OPTIC
		GAS LINE
		TELEPHONE - OVERHEAD
		TELEPHONE - UNDERGROUND
		PEDESTALS (CATV, ELEC, TELE), GAS METER, ELEC METER
		ELECTRIC MANHOLE, HANDHOLE
		SOIL BORING
		BENCHMARK & CONTROL POINT
		MAILBOX
		UTILITY POLE W/ GUY WIRE & MAST ARM LIGHT POLE
		TREE (DECIDUOUS & CONIFEROUS)
		BUSH & SHRUB
		GROUND / LANDSCAPE LIGHT
		SPOT ELEVATION

**LEGEND**

EXISTING	PROPOSED	
		SANITARY MANHOLE & SANITARY SEWER
		SANITARY SEWER SERVICE & CLEANOUT
		SANITARY FORCEMAIN
		TREATMENT PLANT PROCESS PIPING
		STORM SEWER
		STORM MANHOLE, CATCH BASIN, CURB & GUTTER INLET, CURB INLET SPECIAL
		DRAINAGE CULVERT, WITH END SECTION
		WATER MAIN
		WATER SERVICE & WATER SERVICE VALVE
		WATER MAIN VALVE
		WATER MAIN VALVE WITH BOX
		WATER MAIN VALVE WITH VAULT
		WATER MAIN REDUCER
		FIRE HYDRANT
		YARD HYDRANT
		WATER WELL
		SPRINKLER HEAD & SPRINKLER VALVE
		EXISTING SURFACE TYPE (HOT-MIX ASPHALT, AGGREGATE, CONCRETE, TURF)
		DITCH CHECK
		INLET OR PIPE PROTECTION
		EROSION CONTROL BLANKET
		HEAVY DUTY EROSION CONTROL BLANKET
		TEMPORARY EROSION CONTROL SEEDING
		SEEDING AREA, CLASS 1
		SEEDING AREA, CLASS 2, 3, OR 4
		LANDSCAPE
		STABILIZED CONSTRUCTION ENTRANCE
		RIP RAP
		PAVEMENT REPLACEMENT, PCC
		PAVEMENT REPLACEMENT, HMA
		DRIVEWAY REPLACEMENT
		AGGREGATE REPLACEMENT

**ABBREVIATIONS**

ABD = ABANDON(ED)	LS = LUMP SUM
CMP = CORRUGATED METAL PIPE	MH = MANHOLE
CO = CLEAN OUT	MIN = MINIMUM
CTRL = CONTROL	PVMNT = PAVEMENT
CY = CUBIC YARD(S)	PRC = PRECAST REINFORCED CONCRETE
DI = DUCTILE IRON	PR = PROPOSED
EA = EACH	RCP = REINFORCED CONCRETE PIPE
EL = ELEVATION	REM = REMOVE(D)
EROS = EROSION	REPL = REPLACE(D)
EX = EXISTING	R/R = REMOVE & REPLACE
FES = FLARED END SECTION	SAN = SANITARY
FM = FORCE MAIN	SVC = SERVICE
FRSA = FOUR RIVERS SANITATION AUTHORITY	SY = SQUARE YARD(S)
FT = FEET	TY = TYPE
INV = INVERT	UNK = UNKNOWN
LF = LINEAR FEET	VCP = VITRIFIED CLAY PIPE
LINCIPP = LINED WITH CURED IN PLACE PIPE	WM = WATER MAIN

**GENERAL NOTES**

1. THE CONTRACTOR IS SOLELY RESPONSIBLE FOR THE EXECUTION OF WORK TO THE LINES AND GRADES SHOWN ON THE PLANS. CONSTRUCTION SHALL NOT VARY FROM THE PLANS WITHOUT PRIOR APPROVAL FROM THE FOUR RIVERS SANITATION AUTHORITY (FRSA).
2. THE CONTRACTOR SHALL NOTIFY THE FRSA, MUNICIPAL AGENCIES, JURISDICTIONAL ROADWAY AUTHORITIES AND ALL AFFECTED PROPERTY OWNERS A MINIMUM OF 48 HOURS PRIOR TO START OF CONSTRUCTION.
3. THE CONTRACTOR SHALL IDENTIFY ALL UTILITY LOCATIONS IN THE FIELD BY CONTACTING J.U.L.I.E. AT 811 OR 1-800-892-0123 AND ALL UTILITIES NOT ON THE J.U.L.I.E. NETWORK 48 HOURS, MINIMUM, PRIOR TO START OF CONSTRUCTION.
4. ALL ROADWAY CONSTRUCTION SHALL BE COMPLETED IN ACCORDANCE WITH THE REQUIREMENTS OF THE ROADWAY AUTHORITY, THE IDOT STANDARD SPECIFICATIONS FOR ROAD AND BRIDGE CONSTRUCTION, LATEST EDITION, AND THE FOUR RIVERS SANITATION AUTHORITY.
5. THE CONTRACTOR SHALL COMPLY WITH ALL REQUIREMENTS OF THE ILLINOIS URBAN MANUAL FOR SOIL EROSION AND SEDIMENT CONTROL.
6. PROTECTION OF WATER SUPPLIES SHALL BE IN ACCORDANCE WITH TITLE 35, C, SECTION 370.350 OF THE ILLINOIS RECOMMENDED STANDARDS FOR SEWAGE WORKS.
7. ALL STRUCTURES, INLETS, PIPES, SWALES, AND PAVEMENT MUST BE KEPT CLEAN AND FREE OF DIRT AND DEBRIS AT ALL TIMES.
8. THE CONTRACTOR IS RESPONSIBLE FOR MAINTAINING ADEQUATE SIGNS, BARRICADES, FENCING, TRAFFIC CONTROL DEVICES AND MEASURES, AND ALL OTHER MEASURES THAT ARE NECESSARY TO PROTECT THE SAFETY OF THE SITE AT ALL TIMES.
9. PROPERTY CORNERS MUST BE CAREFULLY PROTECTED UNTIL THEY HAVE BEEN REFERENCED BY A PROFESSIONAL LAND SURVEYOR.

**SPECIAL CONSIDERATIONS**

1. PROJECT ACCESS WILL BE ALLOWED OFF OF MARTIN ROAD.
2. THE CONTRACTOR SHALL OBTAIN A CITY OF ROCKFORD RIGHT-OF-WAY ENCROACHMENT PERMIT PRIOR TO STARTING ANY WORK. THE CONTRACTOR SHALL PAY ALL ASSOCIATED FEES AND SUBMIT ALL REQUIRED BOND AND INSURANCE INFORMATION TO THE CITY FOR APPROVAL. COPIES OF ALL CITY PERMITS, INCLUDING PROOF OF INSURANCE AND BOND, SHALL BE SUBMITTED TO THE FRSA UPON RECEIPT BY THE CONTRACTOR. ALL COSTS ASSOCIATED WITH CITY OF ROCKFORD PERMITS SHALL BE AT NO ADDITIONAL COST TO THE FRSA.

**SUMMARY OF QUANTITIES**

No.	ITEM	UNIT	QTY.
1	HMA SRF CSE IL 9.5 MIX "D" N50, 2"	TON	196
2	HA BASE CSE IL 19.0 N50, 4"	TON	392
3	PAVEMENT MARKING	FOOT	168
4	PAVEMENT MARKING H.C. SYMBOL	EACH	1

THIS PLAN SET CONTAINS INFORMATION FOR THE COMPLETE PROJECT. WORK UNDER THIS BID INCLUDES FINAL SHAPING OF AGGREGATE, HMA PAVING OPERATIONS, AND PAVEMENT MARKINGS. OTHER INFORMATION SHOWN WITHIN PLAN SET TO BE BY OTHERS AND FOR INFORMATION ONLY.

**UTILITIES**

NICOR (GAS) SAKIBUL FORAH (815) 388-2903	FRONTIER (COMMUNICATIONS)
COMED (ELECTRIC) AMIR MAHMUTAGIC (630) 437-2212	ILLINOIS FIBER RESOURCES LANCE SANDY (815) 753-6075
AT&T (COMMUNICATIONS) HECTOR GARCIA (630) 573-5465	CITY OF ROCKFORD-WATER DIV. JAMIE ROTT (779) 348-7654
COMCAST (COMMUNICATIONS) KEITH KOSHINSKI (224) 229-5432	CITY OF ROCKFORD-ENGINEERING TIMOTHY HINKENS (779) 348-7300

**HOT-MIX ASPHALT MIXTURE REQUIREMENTS**

MIXTURE USE(S)	SURFACE COURSE	BINDER COURSE
PG:	PG 64-22	PG 64-22
DESIGN AIR VOIDS	4.0 @ N50	4.0 @ N50
MIXTURE COMPOSITION (GRADATION MIXTURE)	IL 9.5	IL 19.0
FRICTION AGGREGATE	MIX "D"	N/A
MIX UNIT WEIGHT	112 lbs/sy/in	112 lbs/sy/in
QUALITY MGMT PROGRAM	QC/QA	QC/QA

THESE MIXTURE REQUIREMENTS ARE APPLICABLE FOR THIS PROJECT



No.	DATE	REVISION	INT.

**HOUSEHOLD HAZARDOUS WASTE SITE  
CAPITAL IMPROVEMENT PROJECT #2217**

**LEGEND GENERAL NOTES & SUM OF QTYS**

FOR BID

Sheet No.  
G001

Date:  
4/24/2024



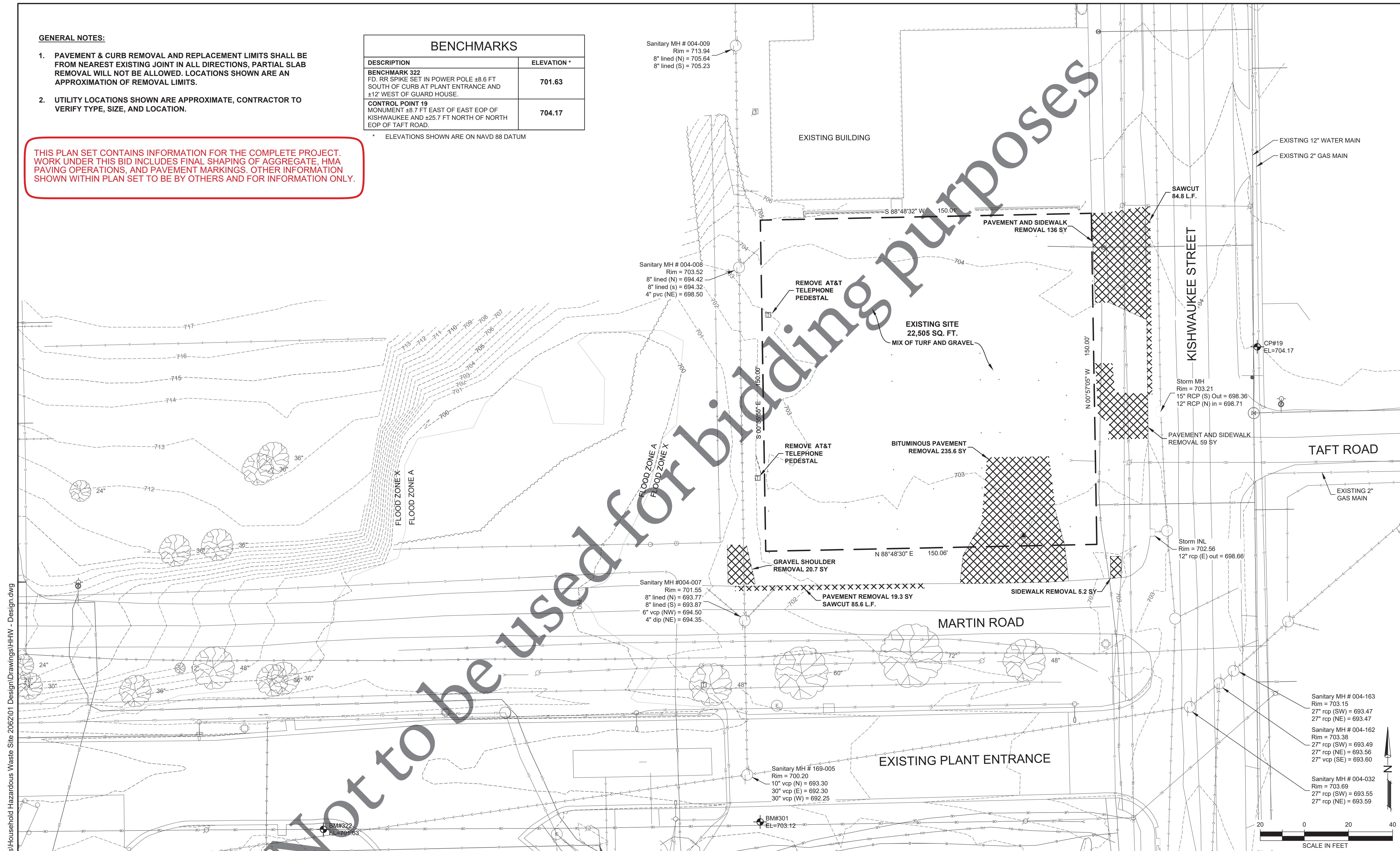
**GENERAL NOTES:**

- PAVEMENT & CURB REMOVAL AND REPLACEMENT LIMITS SHALL BE FROM NEAREST EXISTING JOINT IN ALL DIRECTIONS, PARTIAL SLAB REMOVAL WILL NOT BE ALLOWED. LOCATIONS SHOWN ARE AN APPROXIMATION OF REMOVAL LIMITS.
- UTILITY LOCATIONS SHOWN ARE APPROXIMATE, CONTRACTOR TO VERIFY TYPE, SIZE, AND LOCATION.

THIS PLAN SET CONTAINS INFORMATION FOR THE COMPLETE PROJECT. WORK UNDER THIS BID INCLUDES FINAL SHAPING OF AGGREGATE, HMA PAVING OPERATIONS, AND PAVEMENT MARKINGS. OTHER INFORMATION SHOWN WITHIN PLAN SET TO BE BY OTHERS AND FOR INFORMATION ONLY.

BENCHMARKS	
DESCRIPTION	ELEVATION *
<b>BENCHMARK 322</b> FD. RR SPIKE SET IN POWER POLE ±8.6 FT SOUTH OF CURB AT PLANT ENTRANCE AND ±12' WEST OF GUARD HOUSE.	701.63
<b>CONTROL POINT 19</b> MONUMENT ±8.7 FT EAST OF EAST EOP OF KISHWAUKEE AND ±25.7 FT NORTH OF NORTH EOP OF TAFT ROAD.	704.17

\* ELEVATIONS SHOWN ARE ON NAVD 88 DATUM



Not to be used for bidding purposes

file: I:\District Projects\Household Hazardous Waste Site 2026201 Design\Drawings\HHW - Design.dwg



No.	DATE	REVISION	INT.

**HOUSEHOLD HAZARDOUS WASTE SITE  
CAPITAL IMPROVEMENT PROJECT #2217**

**EXISTING CONDITIONS & REMOVALS PLAN**

FOR BID

Sheet No.  
C100  
Date:  
4/24/2024



CITY OF ROCKFORD SIGNAGE

KEY	TYPE	REMARKS
①	POLE MOUNTED	18"X24" "HOUSEHOLD WASTE DROPOFFS" DIRECTIONAL ARROW RIGHT
②	FENCE MOUNTED	48" X 24" "HOUSEHOLD WASTE DROPOFFS" "SAT 8 AM - 4 PM" "SUN 12 PM - 4 PM" "NO AFTER HOUR DROPOFFS" "VIOLATORS WILL BE PROSECUTED"
③	POLE MOUNTED	18" X 24" "HOUSEHOLD WASTE DROPOFFS" DIRECTIONAL ARROW LEFT
④	POLE MOUNTED	18" X 24" "HOUSEHOLD WASTE DROPOFFS EXIT ONLY"
⑤	FENCE MOUNTED	48" X 24" "HOUSEHOLD WASTE DROPOFFS" "SAT 8 AM - 4 PM" "SUN 12 PM - 4 PM" "NO AFTER HOUR DROPOFFS" "VIOLATORS WILL BE PROSECUTED"
⑥	FENCE MOUNTED	HANDICAP SIGN

LEGEND

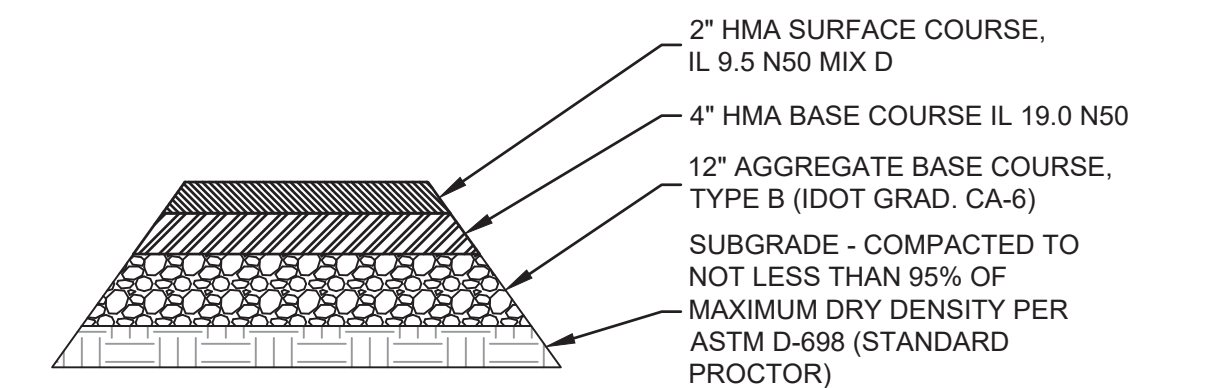
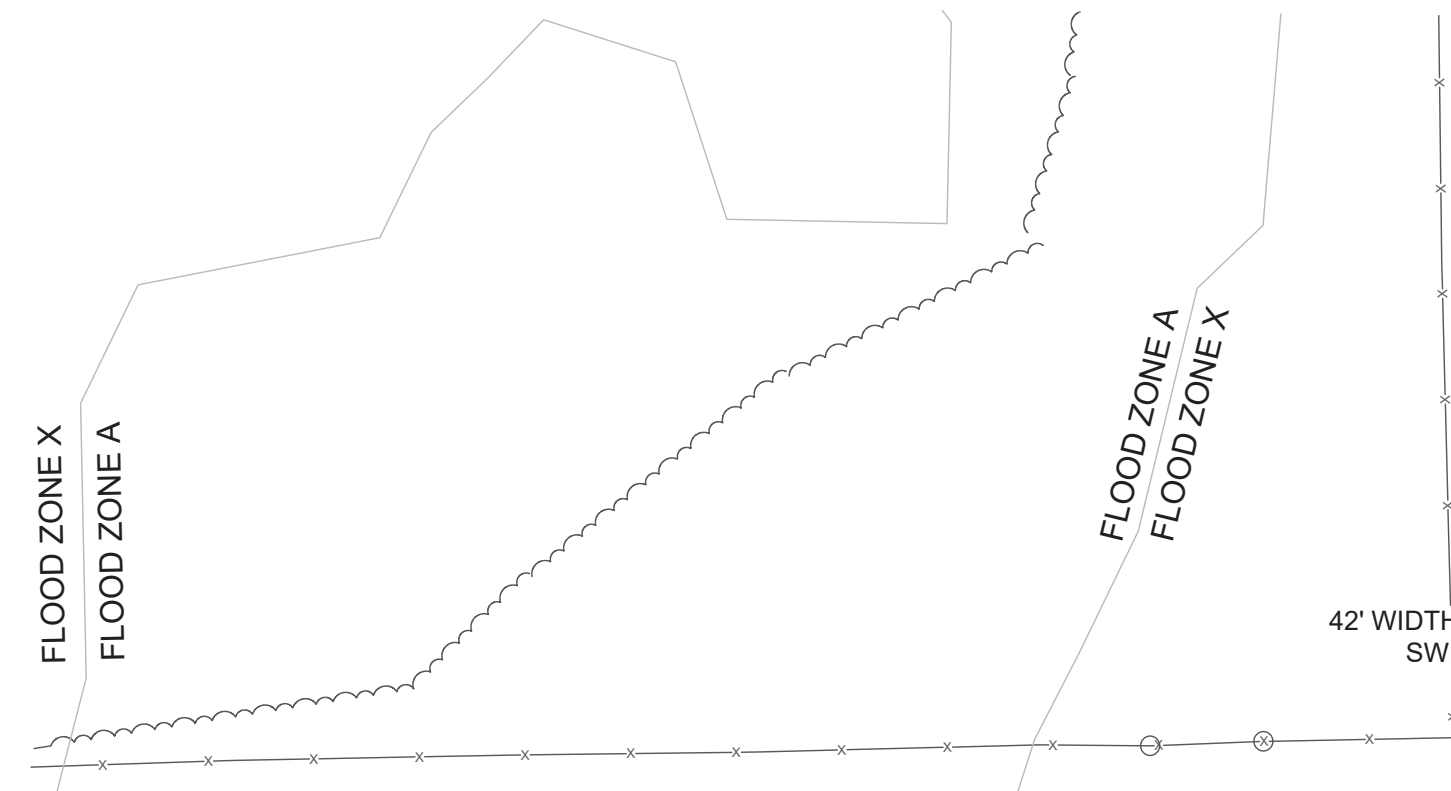
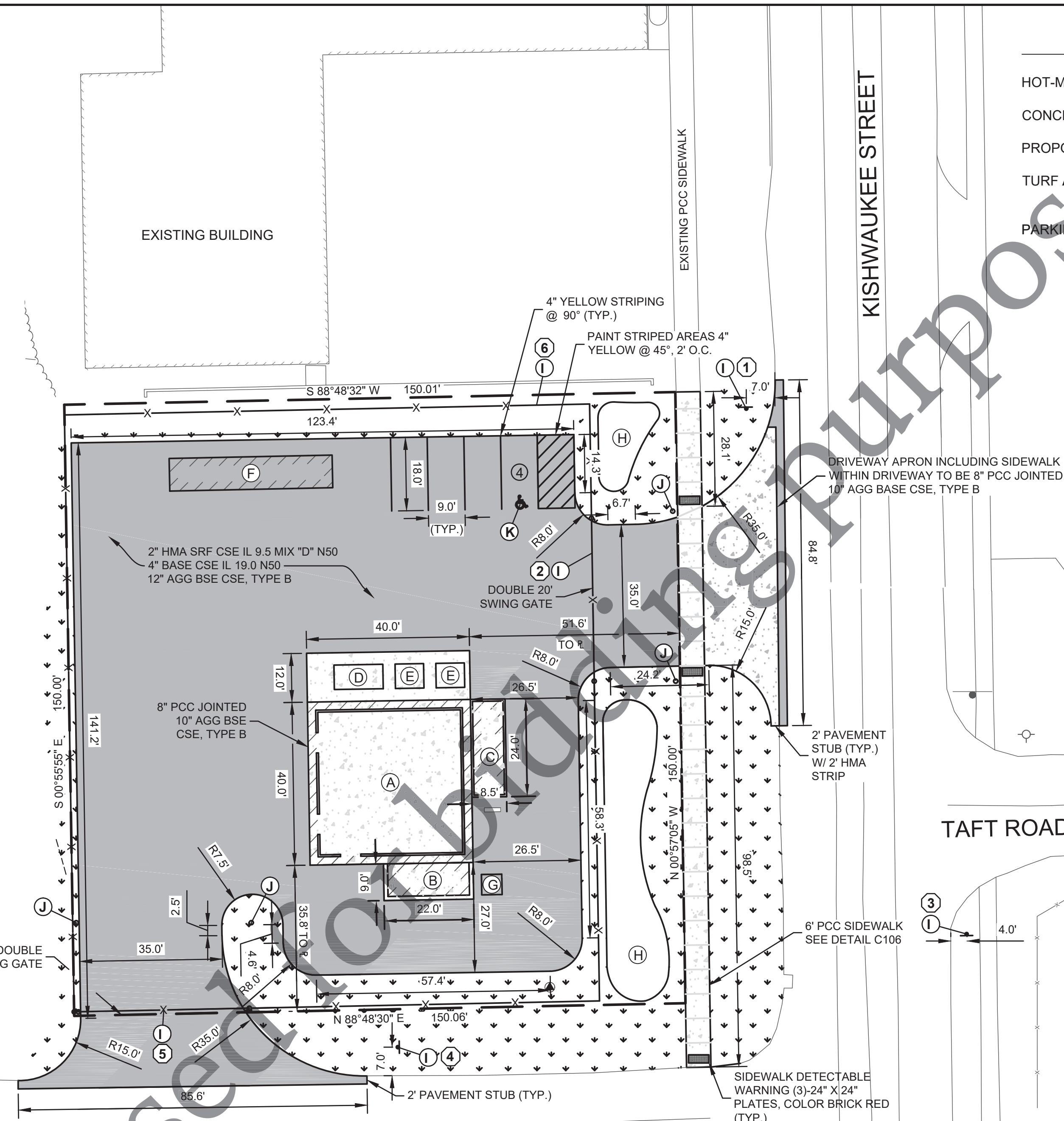
HOT-MIX ASPHALT	
CONCRETE	
PROPOSED CANOPY	
TURF AREA	
PARKING STALLS	④

NOTES

- (A) STORAGE CANOPY, 40' X 40'
- (B) OFFICE TRAILER, 20' X 8'
- (C) STORAGE SHED, 23' X 7.5'
- (D) TIN HOPPER, 12' X 6'
- (E) DUMPSTER, 6' X 7'
- (F) TIRE STORAGE, 40' X 8'
- (G) PORTABLE TOILET
- (H) LANDSCAPE BERM
- (I) SIGNAGE PER THE CITY OF ROCKFORD
- (J) GATE HOLDBACK AND POST
- (K) H.C. SYMBOL DETAIL 1, C106

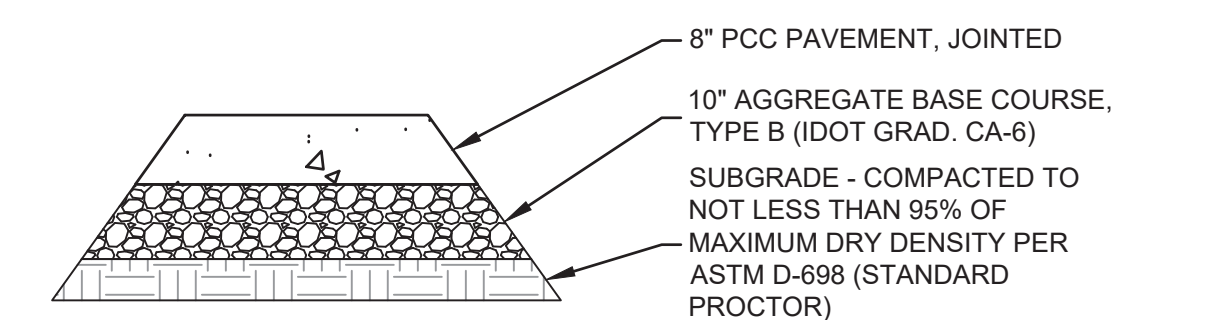
GENERAL NOTES:

- ALL ANGLES FOR ROADWAY, PARKING LOT, AND CONCRETE PAD LOCATIONS ARE 90° UNLESS NOTED OTHERWISE.
- SIGN CONSTRUCTION AND PAVEMENT MARKINGS SHALL CONFORM TO THE REQUIREMENTS OF THE MANUAL ON UNIFORM TRAFFIC CONTROL DEVICES, CURRENT EDITION.
- ALL RADII ARE DIMENSIONED TO THE EDGE OF PAVEMENT.
- ALL COORDINATES AND DIMENSIONS ARE REFERENCED TO THE EDGE OF PAVEMENT OR CENTERLINE OF STRIPE UNLESS NOTED OTHERWISE.
- SOME FIELD ADJUSTMENTS MAY BE NECESSARY AT POINTS WHERE PAVEMENT AND SIDEWALKS MEET EXISTING PAVEMENT, CURB, AND SIDEWALKS. REVIEW ANY REQUIRED CHANGES WITH ENGINEER PRIOR TO CONSTRUCTION OF WORK.
- PROPOSED CANOPY AND ANY REQUIRED PERMITS BY THE CITY OF ROCKFORD.



1 ASPHALT PAVEMENT SECTION

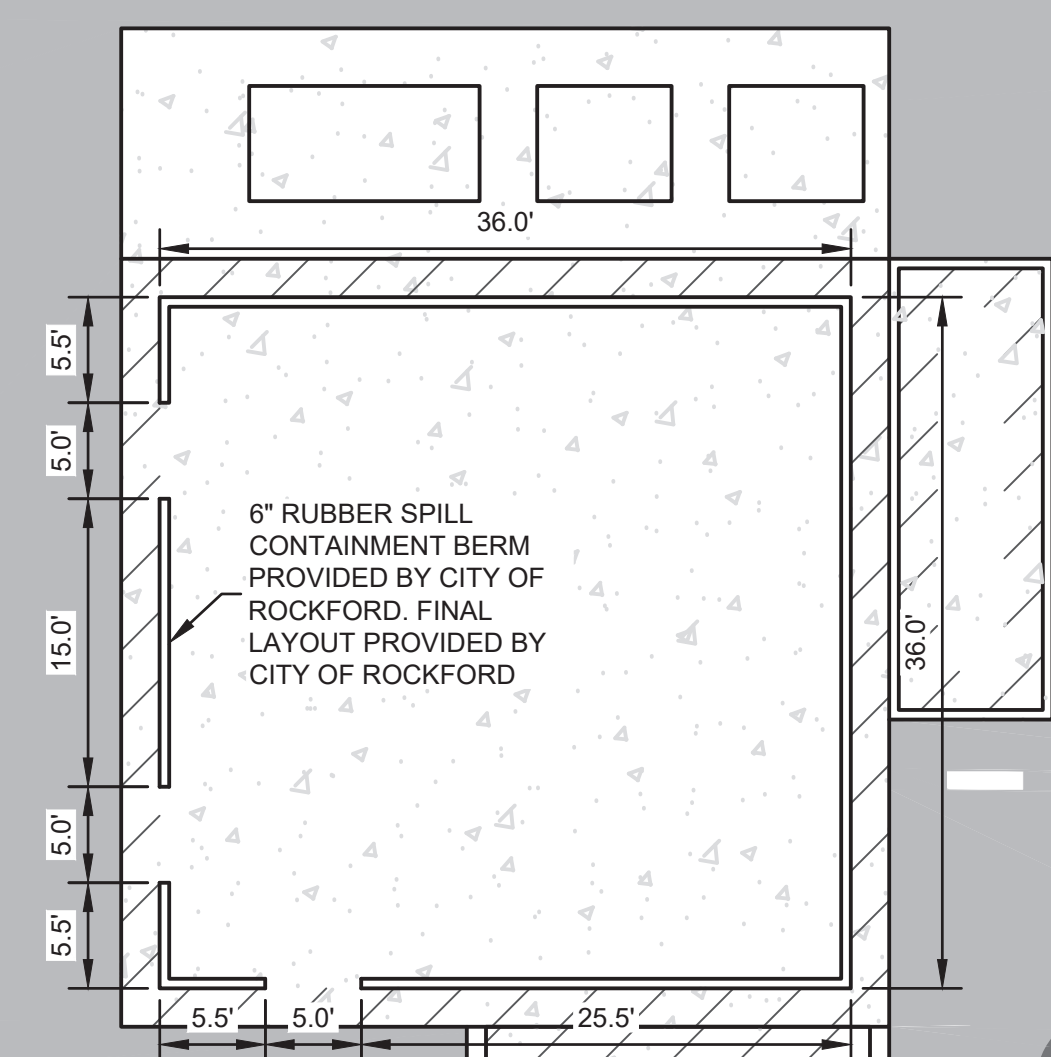
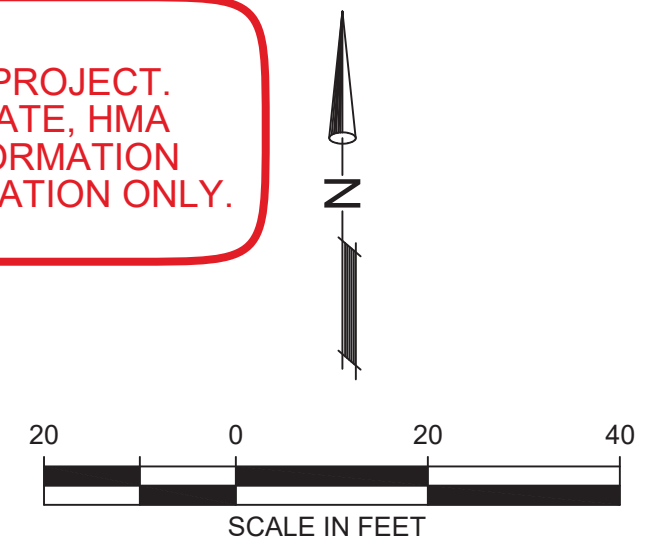
C101 NOT TO SCALE



2 CONCRETE PAVEMENT SECTION

C101 NOT TO SCALE

THIS PLAN SET CONTAINS INFORMATION FOR THE COMPLETE PROJECT. WORK UNDER THIS BID INCLUDES FINAL SHAPING OF AGGREGATE, HMA PAVING OPERATIONS, AND PAVEMENT MARKINGS. OTHER INFORMATION SHOWN WITHIN PLAN SET TO BE BY OTHERS AND FOR INFORMATION ONLY.



3 CONTAINMENT CURB DETAIL

C101 SCALE 1"=10'

No.	DATE	REVISION	INT.

HOUSEHOLD HAZARDOUS WASTE SITE  
CAPITAL IMPROVEMENT PROJECT #2217

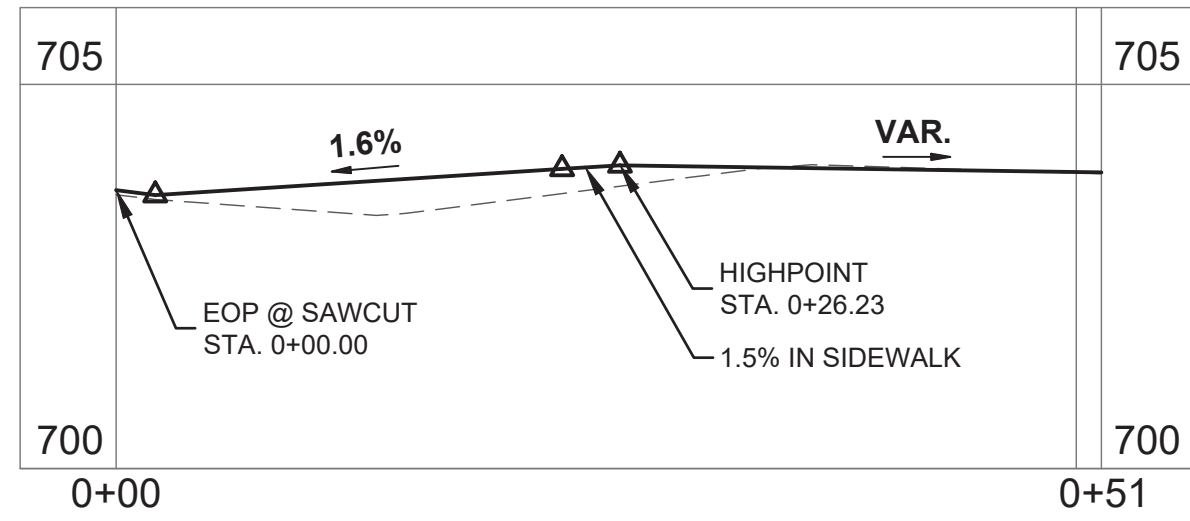
SITE LAYOUT PLAN

Sheet No.  
C101

FOR BID

Date:  
4/24/2024





1 ENTRANCE PROFILE  
C102 SCALE 1"=10', 1H:4V

LEGEND	
HOT-MIX ASPHALT	
CONCRETE	
PROPOSED CANOPY	

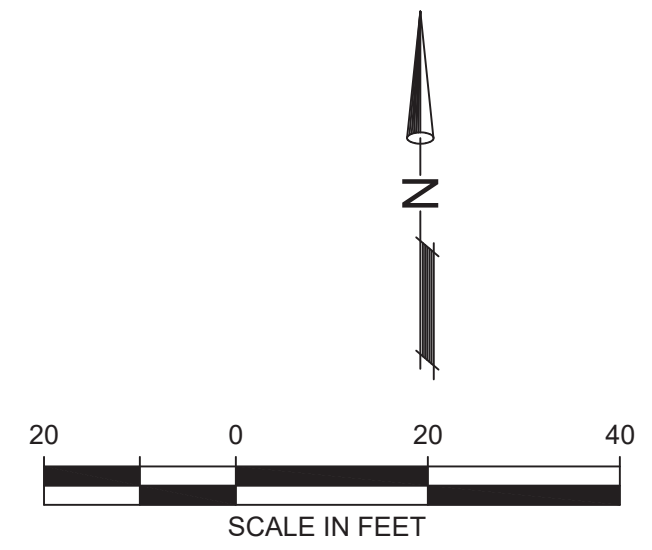
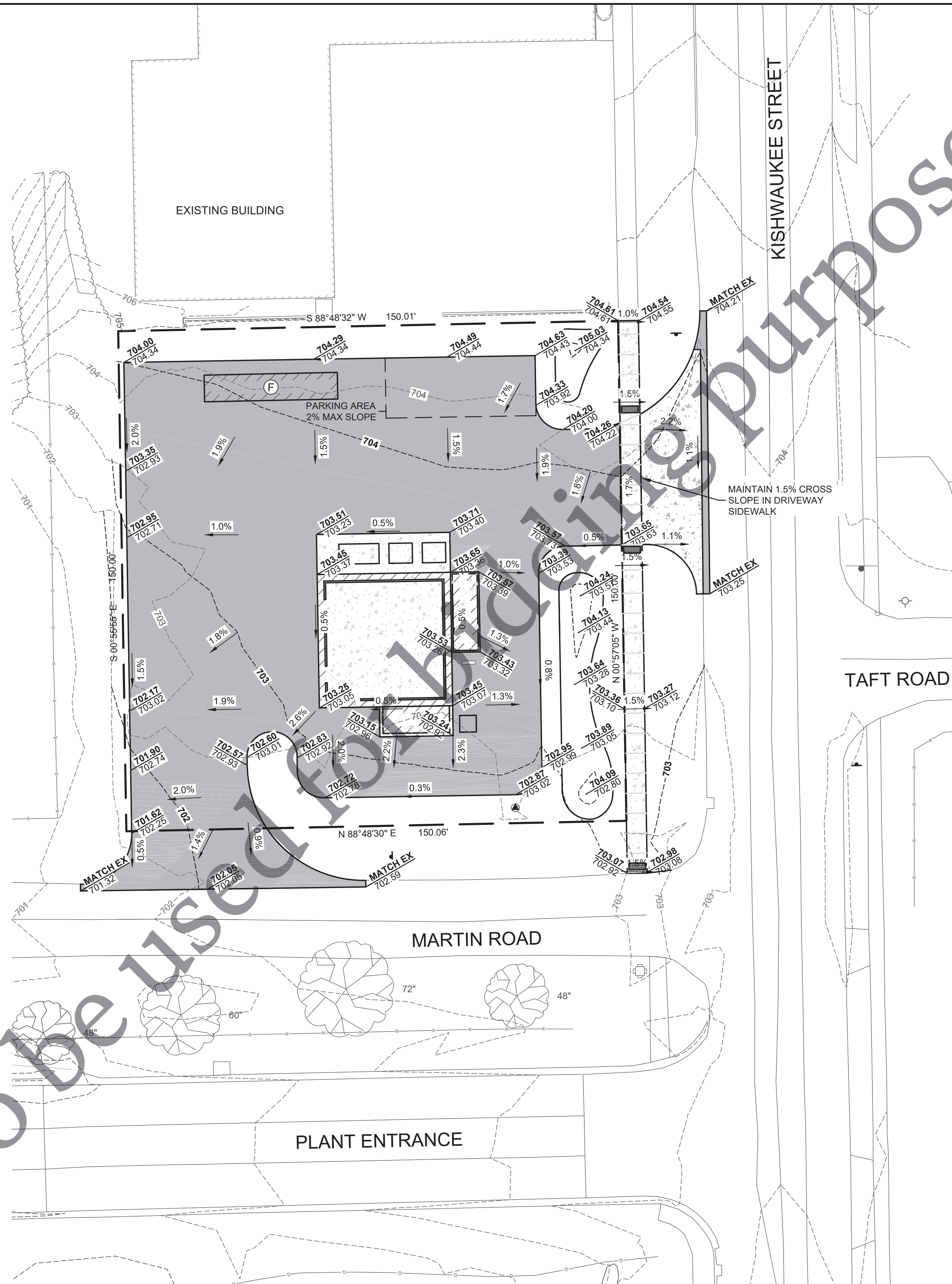
**GENERAL NOTES:**

1. ALL UNPAVED AREAS ARE TO RECEIVE 6 INCHES OF TOPSOIL AND BE SEEDDED, MULCHED, AND WATERED UNTIL A HEALTH STAND OF GRASS IS OBTAINED.
2. THE MAXIMUM SLOPE RATION ON CUT/FILL SLOPES IS 3 HORIZONTAL TO 1 VERTICAL UNLESS OTHERWISE NOTED.
3. PROPERTY CORNERS MUST BE CAREFULLY PROTECTED UNTIL THEY HAVE BEEN REFERENCED BY A PROFESSIONAL LAND SURVEYOR.
4. ALL PROPOSED AREAS SHALL BE STRIPPED OF TOPSOIL AND UNSUITABLE MATERIAL AND EXCAVATED OR FILLED TO WITHIN 0.10 FOOT OF DESIGN SUBGRADE.
5. THE SUBGRADE OF PAVEMENT AREAS SHALL BE FREE OF ALL UNSUITABLE MATERIAL AND SHALL BE COMPACTED TO A MINIMUM 95 PERCENT OF STANDARD PROCTOR DENSITY.
6. THE SUBGRADE SHALL BE PROOF ROLLED, INSPECTED, AND APPROVED BY DESIGN ENGINEER PRIOR TO PLACING THE BASE MATERIAL.
7. THE CONTRACTOR MUST MAINTAIN POSITIVE DRAINAGE AT THE CONCLUSION OF EACH WORKING DAY.

BENCHMARKS	
DESCRIPTION	ELEVATION *
BENCHMARK 322 FD. RR SPIKE SET IN POWER POLE ±8.6 FT SOUTH OF CURB AT PLANT ENTRANCE AND ±12' WEST OF GUARD HOUSE.	701.63
CONTROL POINT 19 MONUMENT ±8.7 FT EAST OF EAST EOP OF KISHWAUKEE AND ±25.7 FT NORTH OF NORTH EOP OF TAFT ROAD.	704.17

\* ELEVATIONS SHOWN ARE ON NAVD 88 DATUM

THIS PLAN SET CONTAINS INFORMATION FOR THE COMPLETE PROJECT. WORK UNDER THIS BID INCLUDES FINAL SHAPING OF AGGREGATE, HMA PAVING OPERATIONS, AND PAVEMENT MARKINGS. OTHER INFORMATION SHOWN WITHIN PLAN SET TO BE BY OTHERS AND FOR INFORMATION ONLY.



file: I:\District Projects\Household Hazardous Waste Site 206201 Design\Drawings\HHW - Design.dwg



No.	DATE	REVISION	INT.

**HOUSEHOLD HAZARDOUS WASTE SITE  
CAPITAL IMPROVEMENT PROJECT #2217**

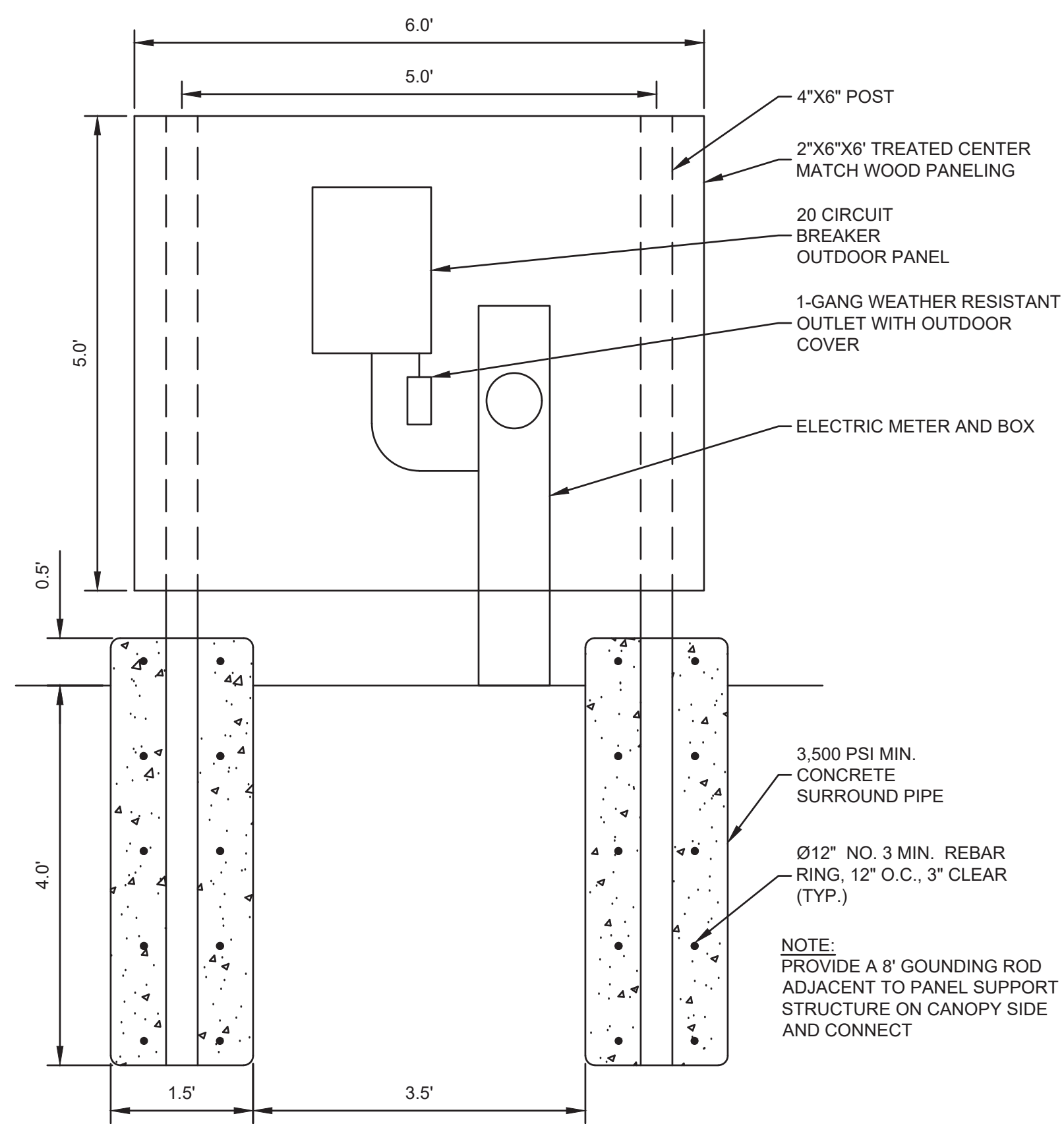
**SITE GRADING PLAN**

Sheet No.  
C102

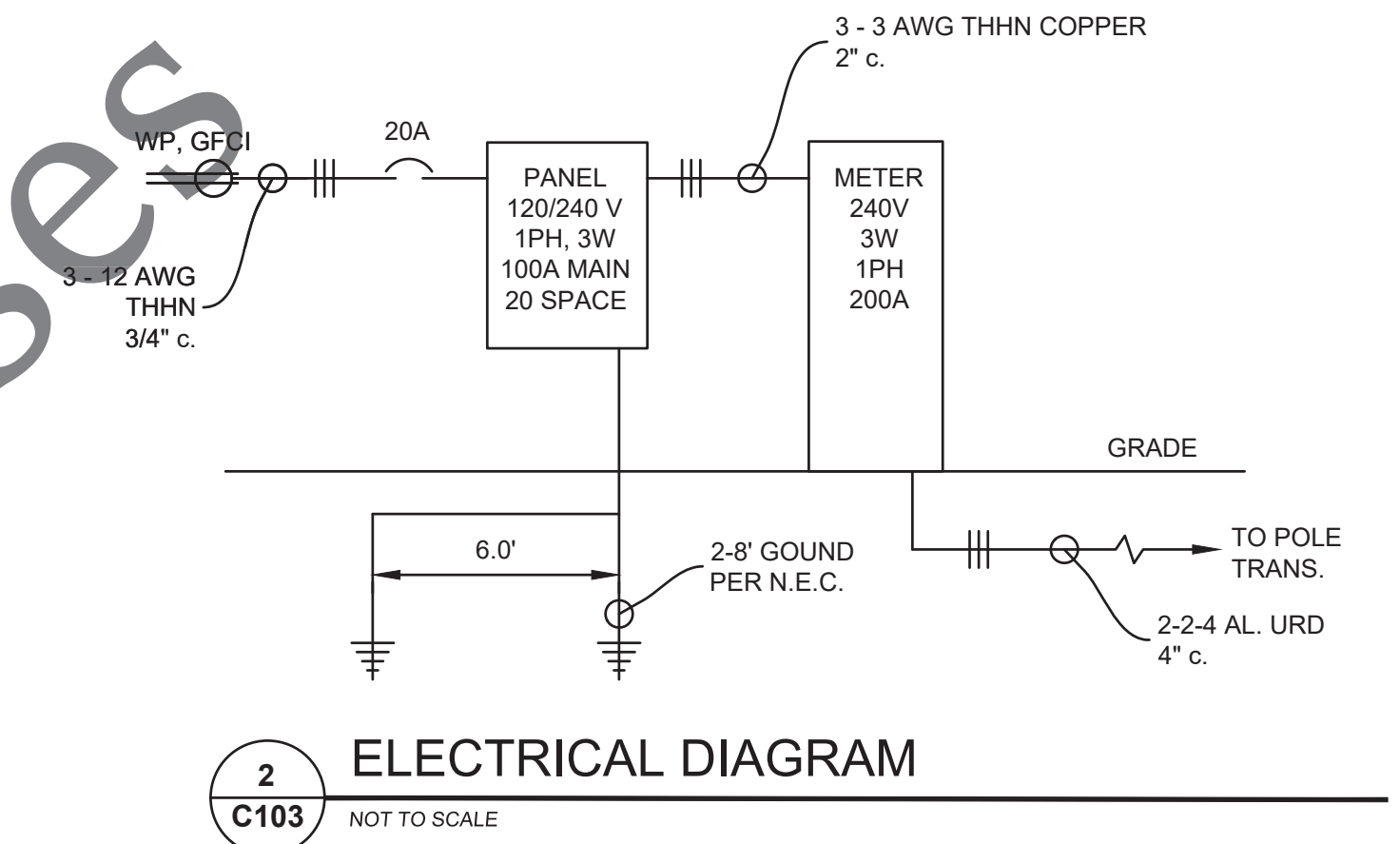
FOR BID

Date:  
4/24/2024

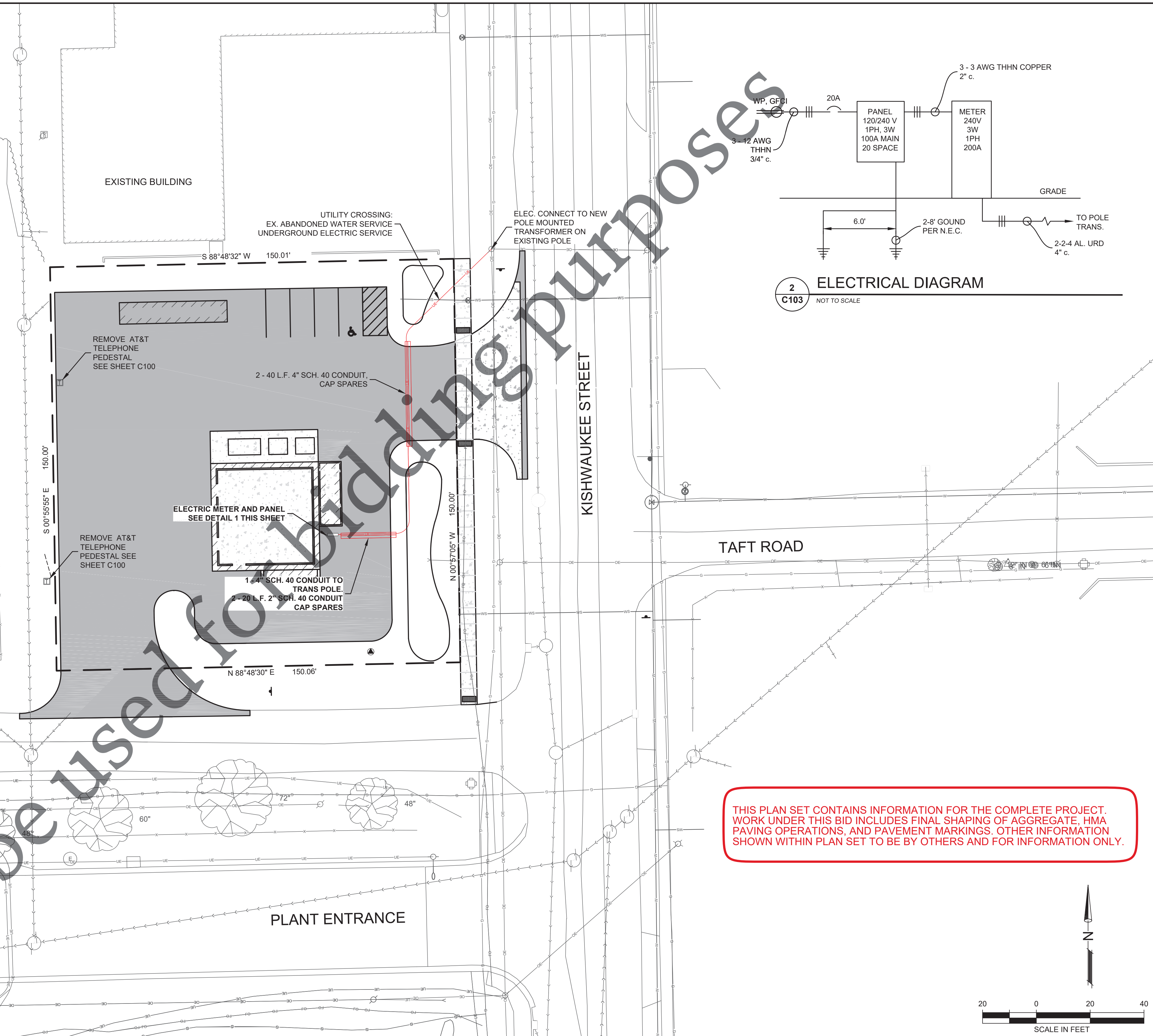




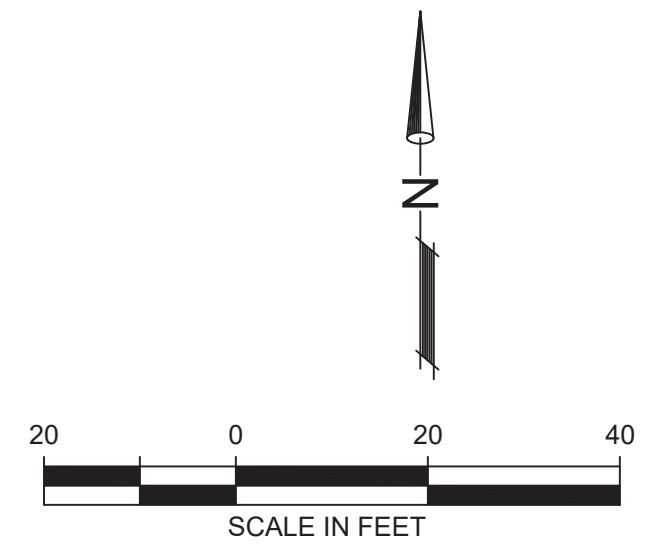
**1**  
C103  
ELECTRIC METER AND PANEL DETAIL  
NOT TO SCALE



**2**  
C103  
ELECTRICAL DIAGRAM  
NOT TO SCALE



THIS PLAN SET CONTAINS INFORMATION FOR THE COMPLETE PROJECT. WORK UNDER THIS BID INCLUDES FINAL SHAPING OF AGGREGATE, HMA PAVING OPERATIONS, AND PAVEMENT MARKINGS. OTHER INFORMATION SHOWN WITHIN PLAN SET TO BE BY OTHERS AND FOR INFORMATION ONLY.



file: I:\District Projects\Household Hazardous Waste Site 206201\Design\Drawings\HHW - Design.dwg



No.	DATE	REVISION	INT.

**HOUSEHOLD HAZARDOUS WASTE SITE  
CAPITAL IMPROVEMENT PROJECT #2217**

**SITE UTILITY PLAN**


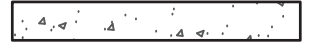

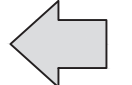
Sheet No.  
C103

FOR BID

Date:  
4/24/2024

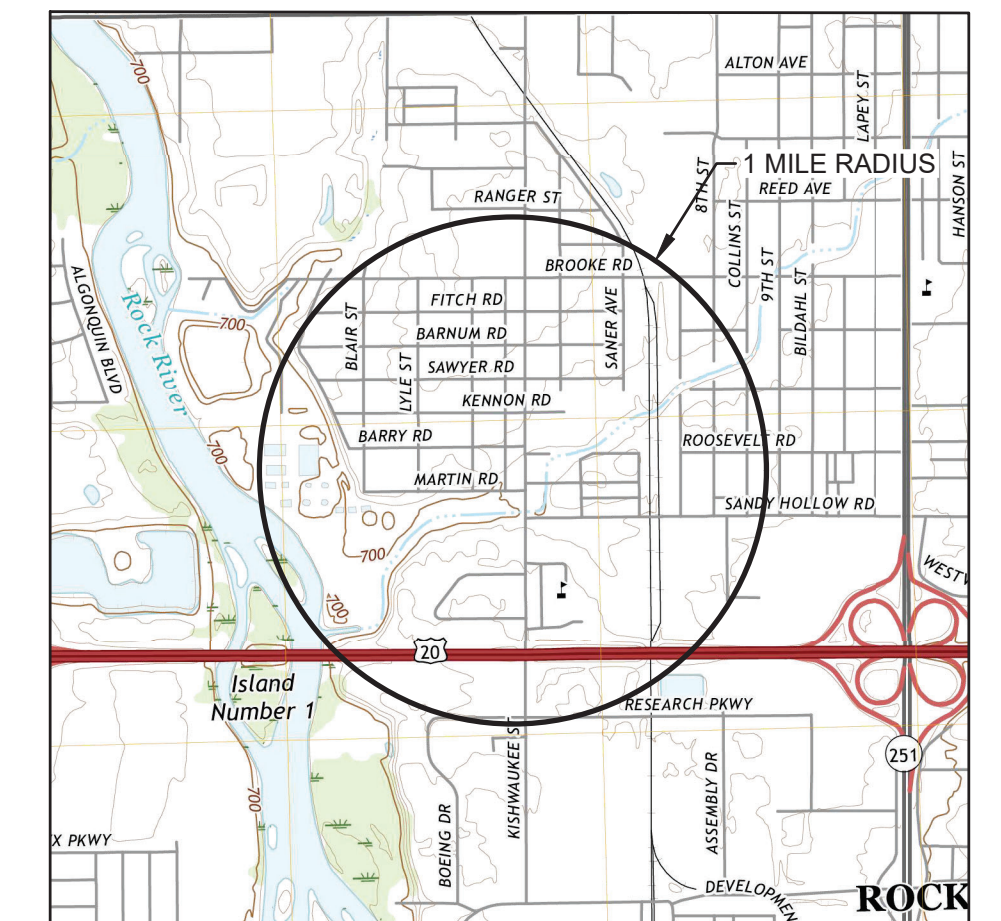


**LEGEND**

- HOT-MIX ASPHALT 
- CONCRETE 
- PROPOSED CANOPY 
- OVERLAND FLOOD ROUTE 

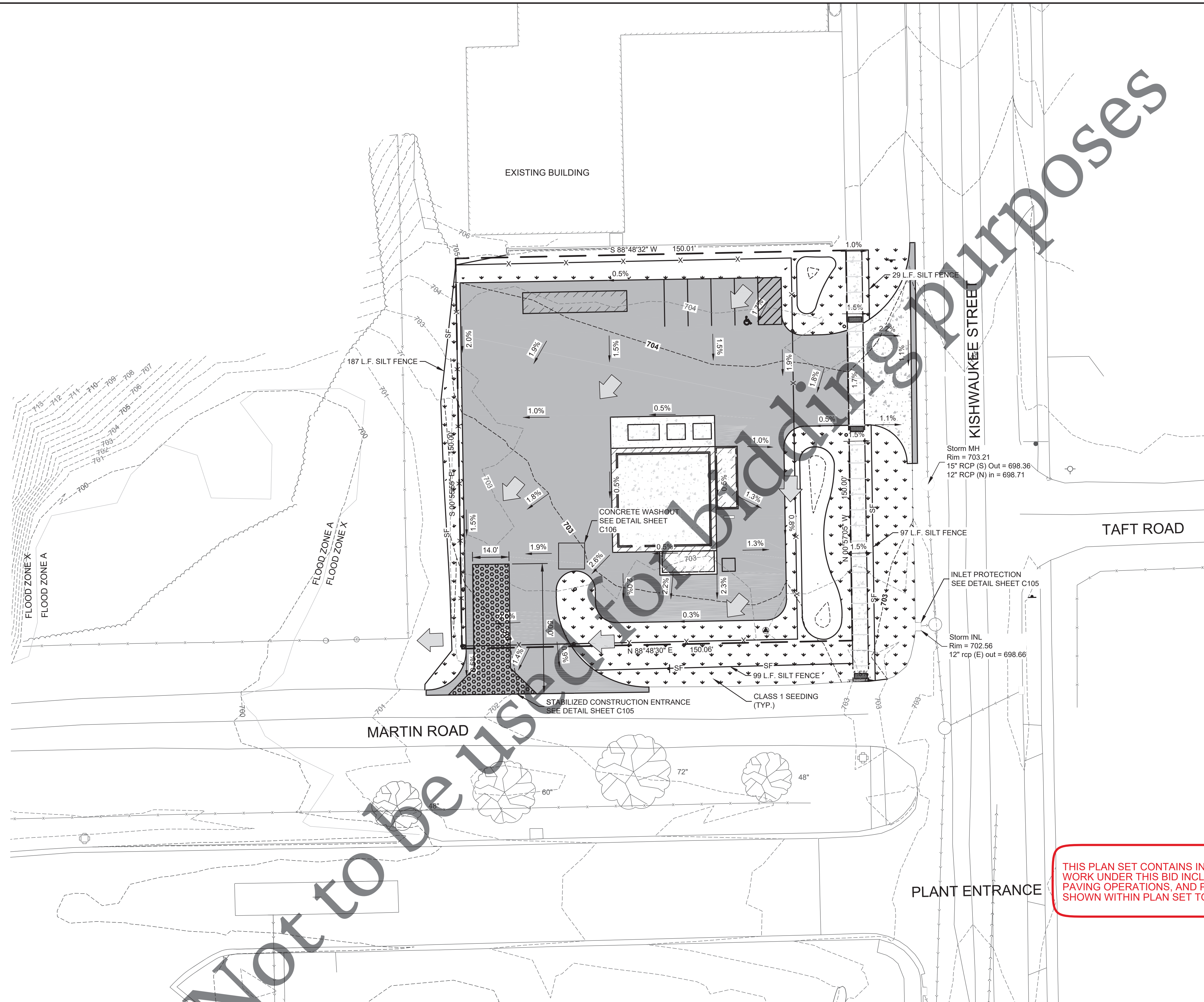
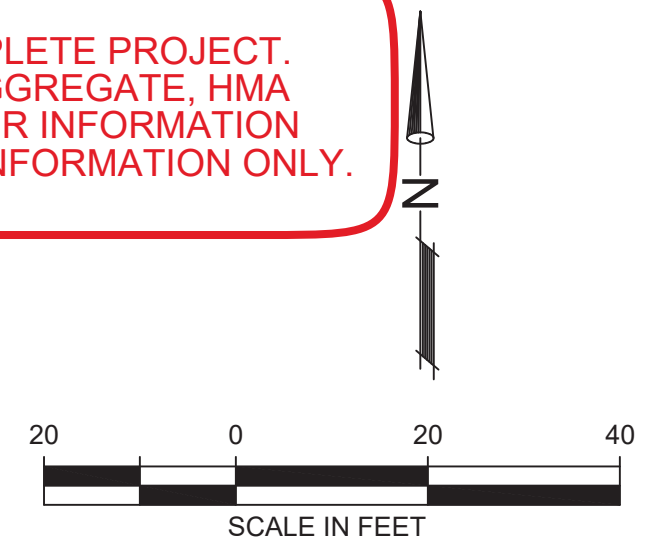
**GENERAL NOTES:**

1. THE TOTAL DISTURBED AREA IS LESS THAN 1 ACRE MAKING THE NPDES GENERAL PERMIT NOT REQUIRED. THE CONTRACTOR MUST STILL FOLLOW THE EROSION CONTROL PLAN AS RECOMMENDED PRACTICE.
2. ANY DISTURBED UNSURFACES AREAS MUST BE KEPT TO A PRACTICAL MINIMUM AND MUST RECEIVE SIX INCHES OF TOPSOIL AND BE SEEDED, MULCHED, AND WATERED UNTIL A HEALTHY STAND OF GRASS IS OBTAINED.
3. ALL INLETS, STRUCTURES, PIPES, SWALES, AND ROADS MUST BE KEPT CLEAN AND FREE OF DIRT AND SILT.
4. ALL STORM STRUCTURES THAT RECEIVE SILTY RUNOFF DURING CONSTRUCTIONS MUST RECEIVE INLET PROTECTION. NO STORM STRUCTURE MAY BE ALLOWED TO BE PROTECTED WITH ANY MEASURE OTHER THAN THOSE DETAILED IN THESE PLANS FOR MORE THAN 48 HOURS OR IF RAIN IS IMMINENT. STRUCTURES WITH CLOSED LIDS WILL NOT REQUIRE PROTECTION FOLLOWING INSTALLATION OF LID.
5. DO NOT TRACK DIRT OR SPILL DIRT CLUMPS ONTO ADJACENT ROADWAYS. IF DIRT IS DEPOSITED ON PAVEMENTS, THE CONTRACTOR MUST REMOVE THE DIRT AND CLEAN THE PAVEMENT IMMEDIATELY.
6. CONTRACTOR MUST INSPECT ALL SEDIMENT CONTROL DEVICES, MATERIAL STORAGE AREAS, AND DISCHARGE POINTS FOR PROPER FUNCTION EACH WEEK OR WITHIN 24 HOURS OF A 0.5" RAINFALL EVENT.



**USGS 7.5 MINUTE MAP**

THIS PLAN SET CONTAINS INFORMATION FOR THE COMPLETE PROJECT. WORK UNDER THIS BID INCLUDES FINAL SHAPING OF AGGREGATE, HMA PAVING OPERATIONS, AND PAVEMENT MARKINGS. OTHER INFORMATION SHOWN WITHIN PLAN SET TO BE BY OTHERS AND FOR INFORMATION ONLY.



No.	DATE	REVISION	INT.

**HOUSEHOLD HAZARDOUS WASTE SITE  
CAPITAL IMPROVEMENT PROJECT #2217**

**EROSION CONTROL PLAN**

Sheet No.  
C104

FOR BID

Date:  
4/24/2024





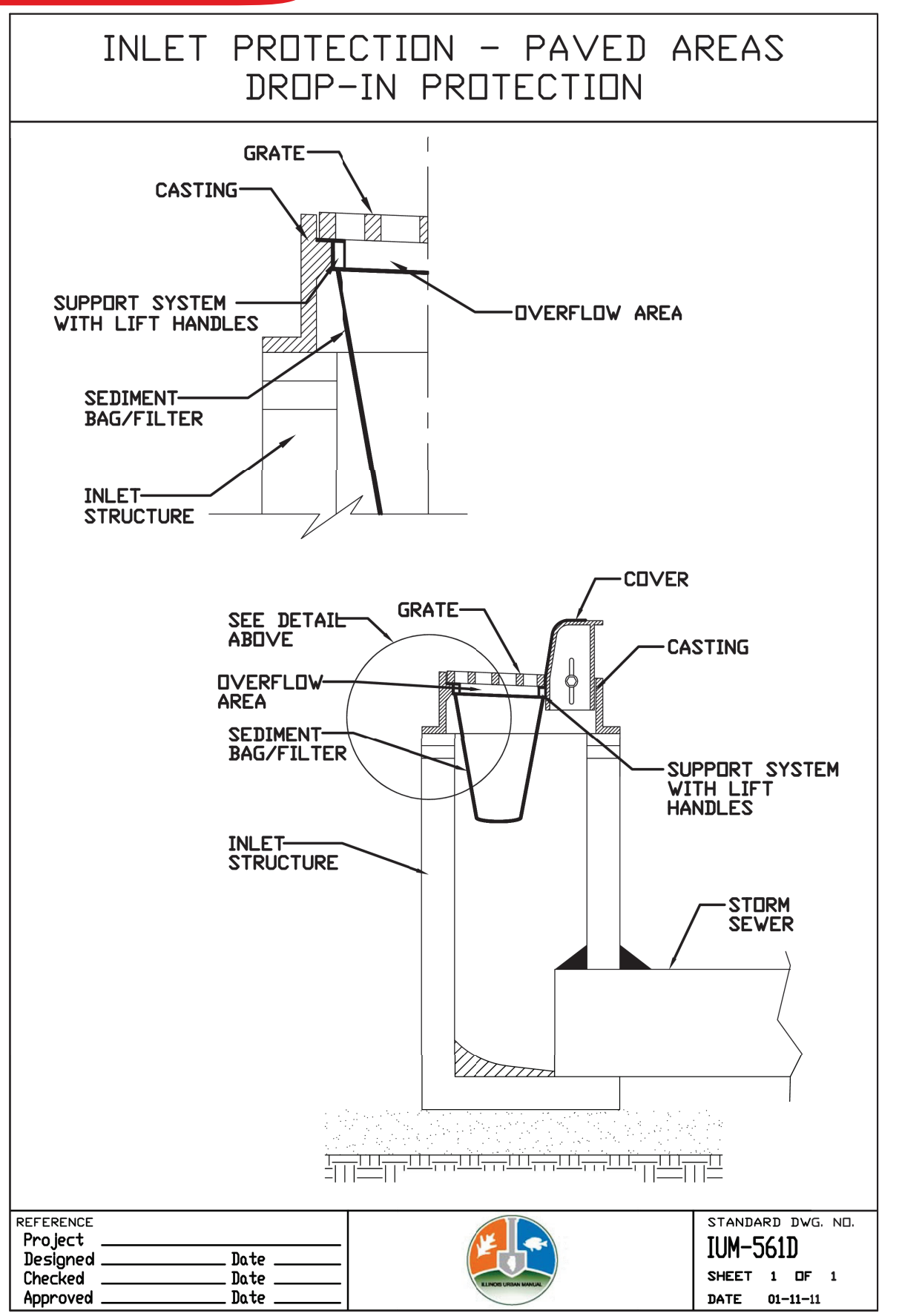
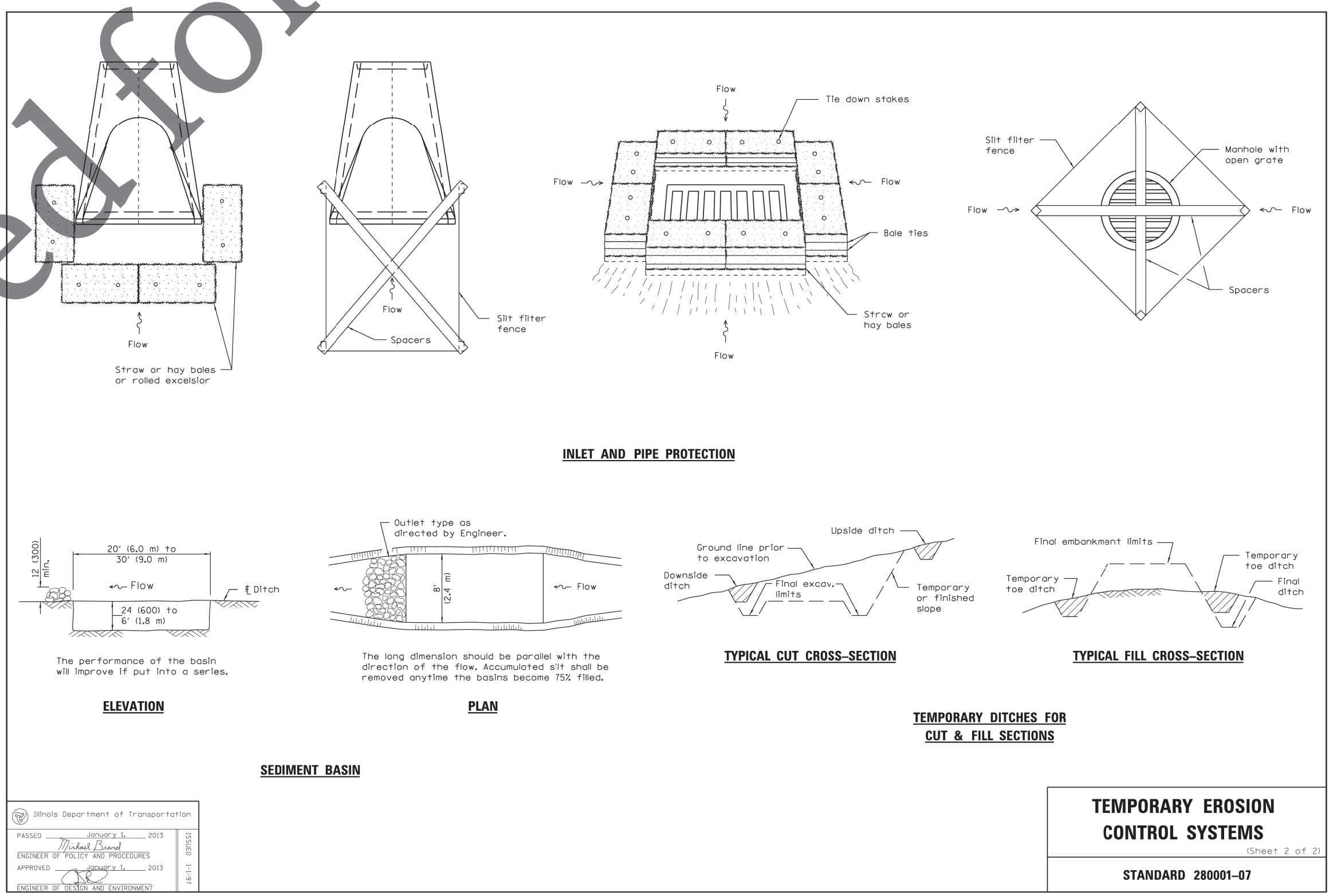
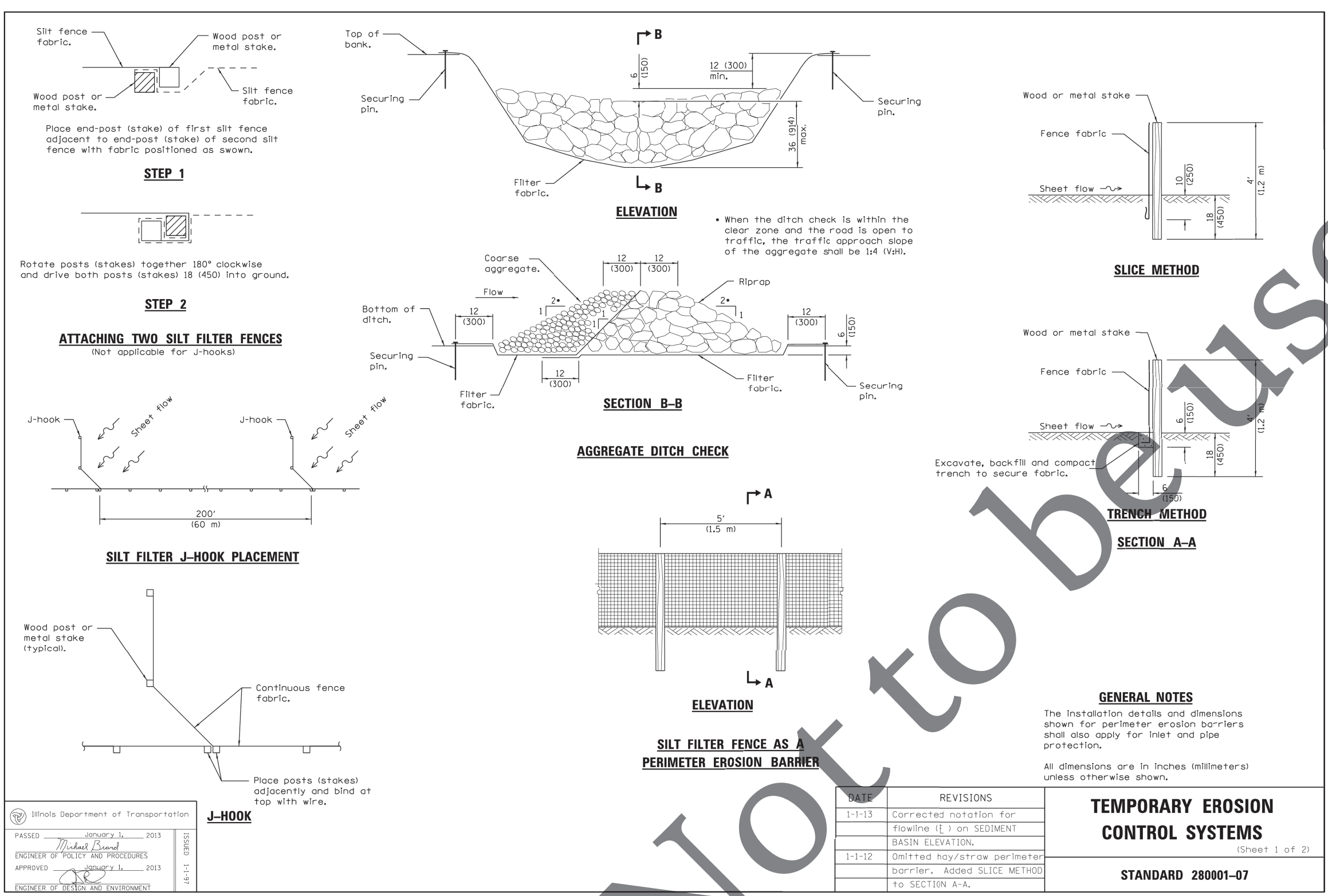
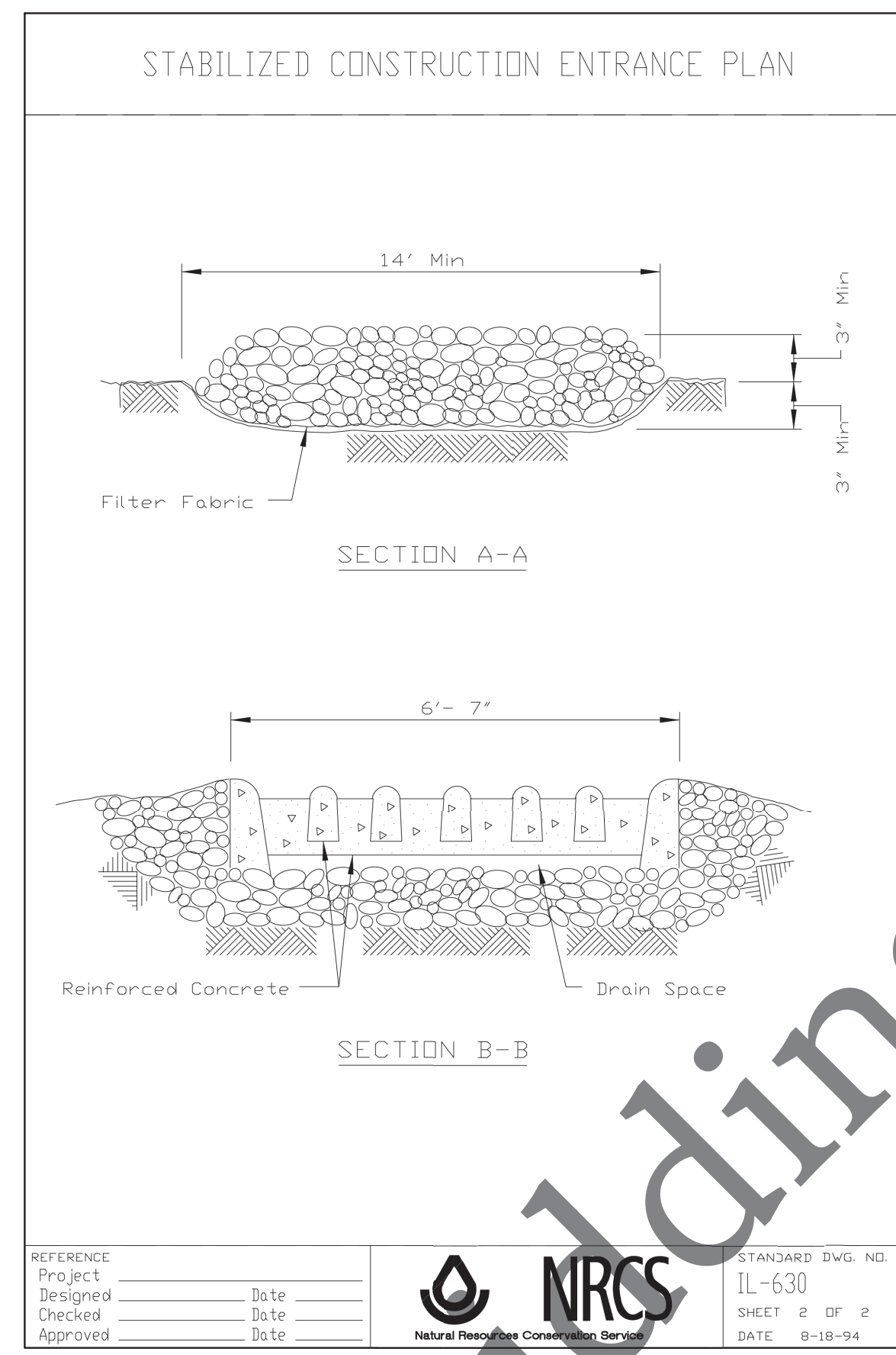
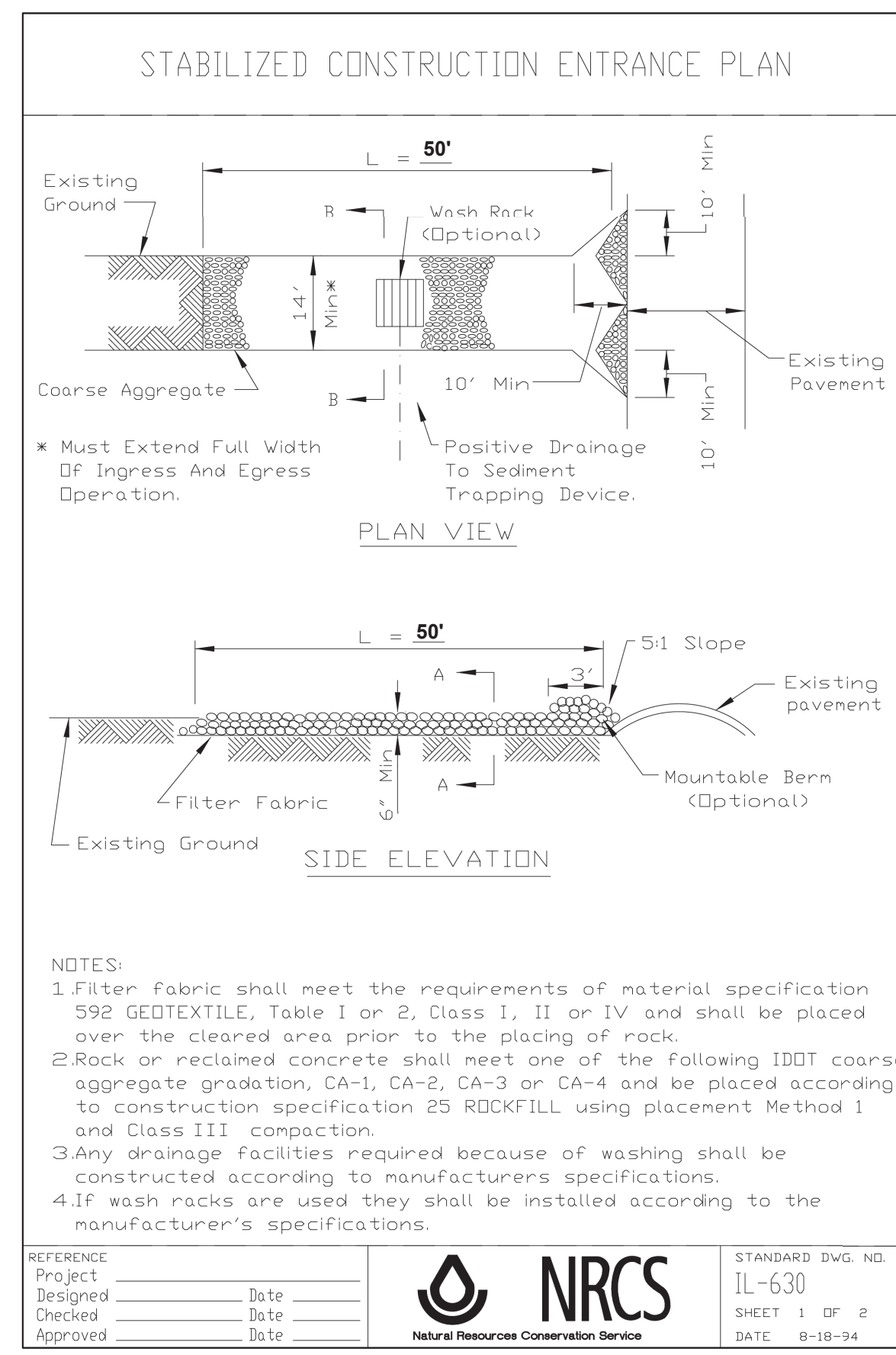
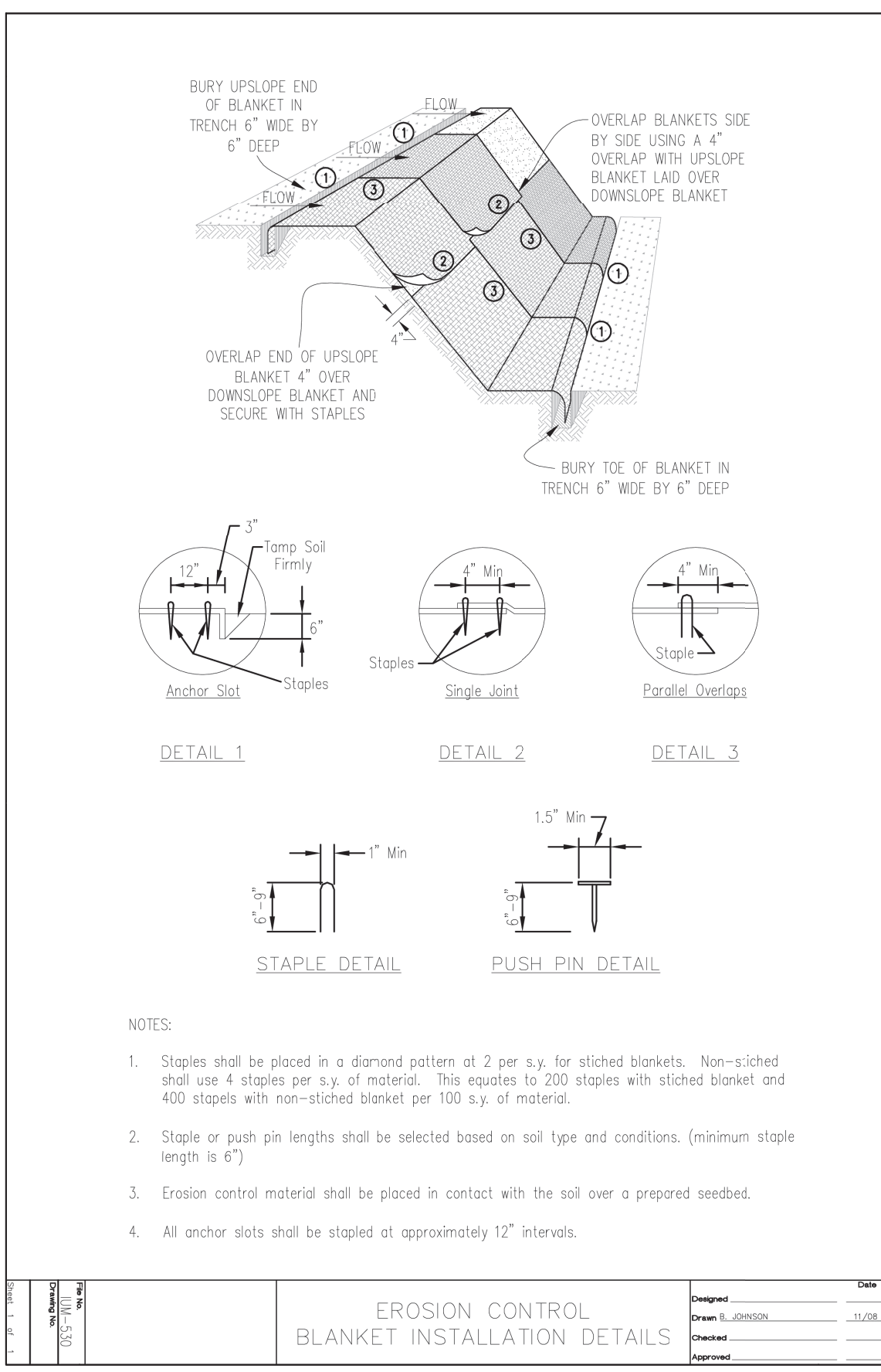
**GENERAL NOTES**  
 THE ESTIMATED AREA OF DISTURBANCE FOR THIS PROJECT IS LESS THAN 1 ACRE. THEREFORE, A NOTICE OF INTENT (NOI) WILL NOT BE FILED. AN EROSION CONTROL PLAN HAS BEEN PREPARED FOR THIS PROJECT. THE CONTRACTOR SHALL COMPLY WITH ALL APPLICABLE REQUIREMENTS OF THE ILLINOIS URBAN MANUAL, CURRENT EDITION, IDOT STANDARD SPECIFICATIONS FOR ROAD AND BRIDGE CONSTRUCTION, CURRENT EDITION, THE FOUR RIVERS SANITATION AUTHORITY (FRSA), AND THE PROJECT SPECIFICATIONS AND DETAILS.  
 THE EROSION CONTROL DEVICES, MATERIALS AND PROCEDURES SHOWN IN THESE PLANS ARE TO BE CONSIDERED A MINIMUM. ADDITIONAL DEVICES OR MATERIALS MAY BE REQUIRED BASED ON EXISTING SITE CONDITIONS. AT THE DIRECTION OF THE ENGINEER. ANY DEVICES, MATERIALS, OR PROCEDURES REQUIRED BY THE ENGINEER DUE TO THE CONTRACTOR'S ACTIONS OR NEGLIGENCE WILL BE AT NO ADDITIONAL COST TO THE FRSA.  
 ALL DISTURBED AREAS SHALL BE SEEDED UNLESS AGRICULTURAL OR OTHERWISE NOTED ON THE PLANS. THE CONTRACTOR IS RESTRICTED TO WORK IN TEMPORARY EASEMENTS OR WORK AREAS DELINEATED ON PLANS. THE CONTRACTOR SHALL TAKE WHATEVER ACTIONS AND MEASURES ARE DEEMED NECESSARY BY THE FRSA OR AUTHORIZED AGENCY TO ELIMINATE EXCESSIVE SILTATION OR EROSION AND TO STABILIZE THE PROJECT AREA. DISCHARGE OF HAZARDOUS SUBSTANCES INTO STORM WATER IS SUBJECT TO IEPA REPORTING AND CLEANUP REQUIREMENTS.

**CONTROL MEASURES**  
 EROSION AND SEDIMENT CONTROL MEASURES SHALL BE IN PLACE BEFORE CONSTRUCTION IN EACH AREA, AS DETERMINED BY THE ENGINEER, AND SHALL BE MAINTAINED THROUGHOUT CONSTRUCTION. CONSTRUCTION ACTIVITIES SHALL ENSURE THAT EXISTING VEGETATION IS PRESERVED WHERE PRACTICAL. THE FOLLOWING CONTROLS WILL BE PROVIDED AS A MINIMUM FOR THE DURATION OF THIS PROJECT:  
 • SEDIMENT CONTROL SHALL BE PROVIDED DOWNSLOPE OF ALL STOCKPILE AREAS.  
 • STABILIZED CONSTRUCTION ENTRANCES MUST BE INSTALLED AS DETAILED AND WHERE REQUIRED BY THE ROADWAY AUTHORITY OR FRSA.  
 • INLET PROTECTION MUST BE INSTALLED FOR ALL INLETS THAT COULD BE SUBJECT TO SILTATION, AS DETERMINED BY THE ENGINEER.  
 • ALL ROADWAYS SHALL BE KEPT CLEAN OF DEBRIS, MUD, SOIL, AND CONSTRUCTION MATERIALS AND SHALL BE INSPECTED AT THE END OF EACH DAY AND CLEANED AS NECESSARY.  
 • ALL DISTURBED AREAS MUST BE STABILIZED WITHIN 7 DAYS IF THEY ARE TO REMAIN DISTURBED FOR MORE THAN 14 DAYS.

**MAINTENANCE**  
 CONTRACTOR SHALL BE RESPONSIBLE FOR MAINTENANCE AND REPAIR OF ALL EROSION AND SEDIMENT CONTROL DEVICES AND PROTECTIVE MEASURES AS REQUIRED TO MAINTAIN THE INTENDED FUNCTION. SEDIMENT COLLECTED FROM THE CONSTRUCTION SITE SHALL BE DISPOSED OF ON THE SITE ON A REGULAR BASIS AS NEEDED. ANY DEBRIS OR SILT DEPOSITED IN THE FLOW LINE OF DRAINAGE STRUCTURES, DITCHES, ETC., THAT COULD OBSTRUCT FLOW SHALL BE REMOVED AT THE CLOSE OF EACH WORKING DAY. ALL DRAINAGE STRUCTURES SHALL BE FREE OF DIRT AND DEBRIS. THE CONTRACTOR SHALL REMOVE AND DISPOSE OF ALL TEMPORARY EROSION CONTROL DEVICES WITHIN 30 DAYS OF FINAL SITE STABILIZATION APPROVAL BY THE FRSA. THE SITE SHALL HAVE A MIN. OF 70% VEGETATIVE COVER TO BE CONSIDERED STABILIZED.

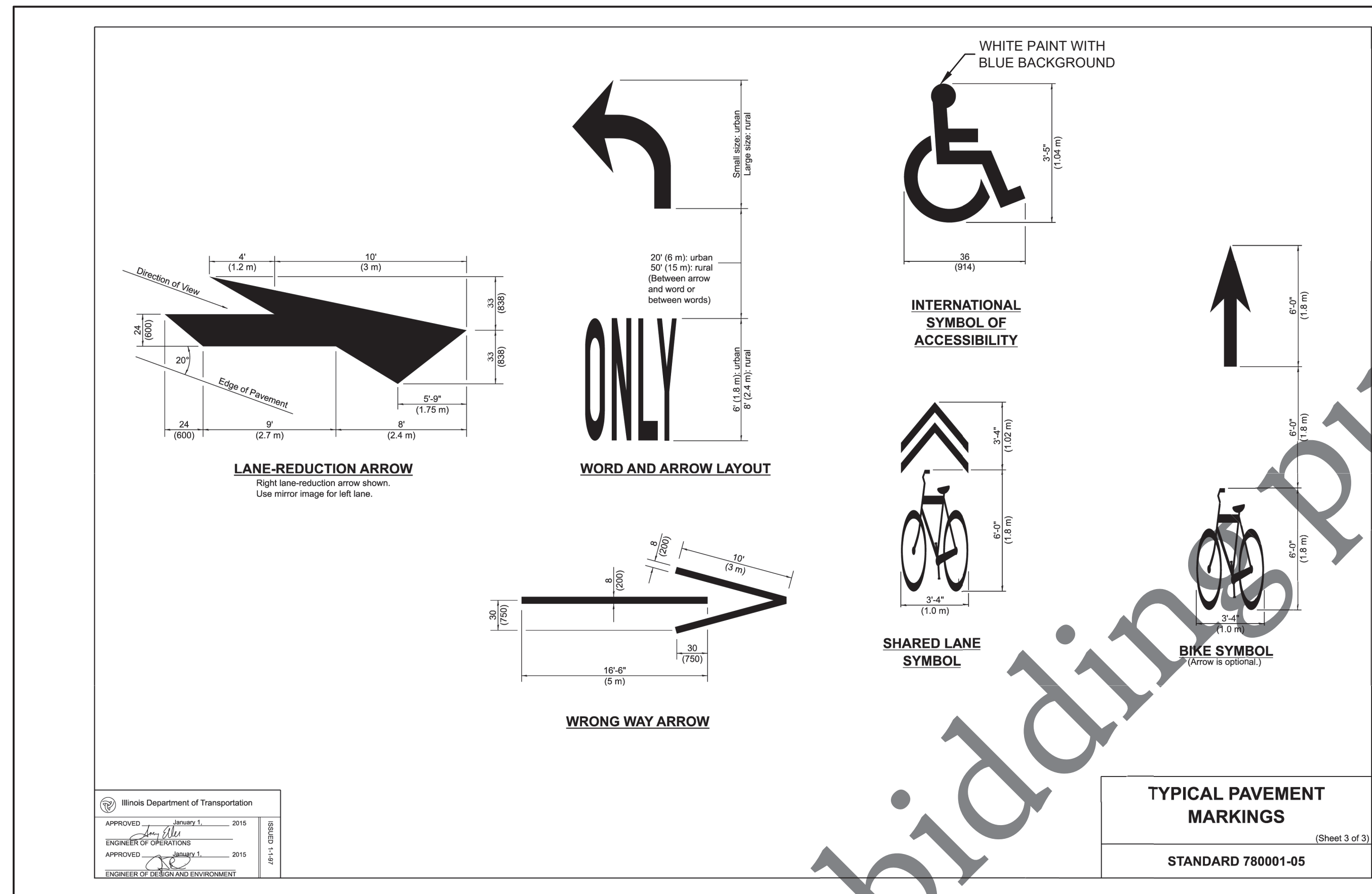
**OTHER DISCHARGES**  
 NON STORM WATER DISCHARGES INCLUDING WASHING OF VEHICLES, CONCRETE WASH-OUT, WATER FOR DUST CONTROL, AND TRENCH DEWATERING DISCHARGES SHALL BE DIRECTED AWAY FROM UNPROTECTED, BARE, OR UNSTABILIZED SOIL AND APPROPRIATE MEASURES SHALL BE IMPLEMENTED TO PREVENT EROSION OR RUNOFF FROM THE SITE. DEWATERING DISCHARGE MUST BE INTO SILT CONTAINMENT BAGS WITH PROPERLY ENGINEERED ANIONIC POLYMER AND FABRIC PORE SIZE. UNDER NO CIRCUMSTANCE SHALL DEWATERING DISCHARGE BE ALLOWED TO FLOW DIRECTLY INTO WATERWAYS. A DEWATERING DISCHARGE PLAN SHALL BE SUBMITTED TO THE FRSA FOR APPROVAL.

THIS PLAN SET CONTAINS INFORMATION FOR THE COMPLETE PROJECT. WORK UNDER THIS BID INCLUDES FINAL SHAPING OF AGGREGATE, HMA PAVING OPERATIONS, AND PAVEMENT MARKINGS. OTHER INFORMATION SHOWN WITHIN PLAN SET TO BE BY OTHERS AND FOR INFORMATION ONLY.



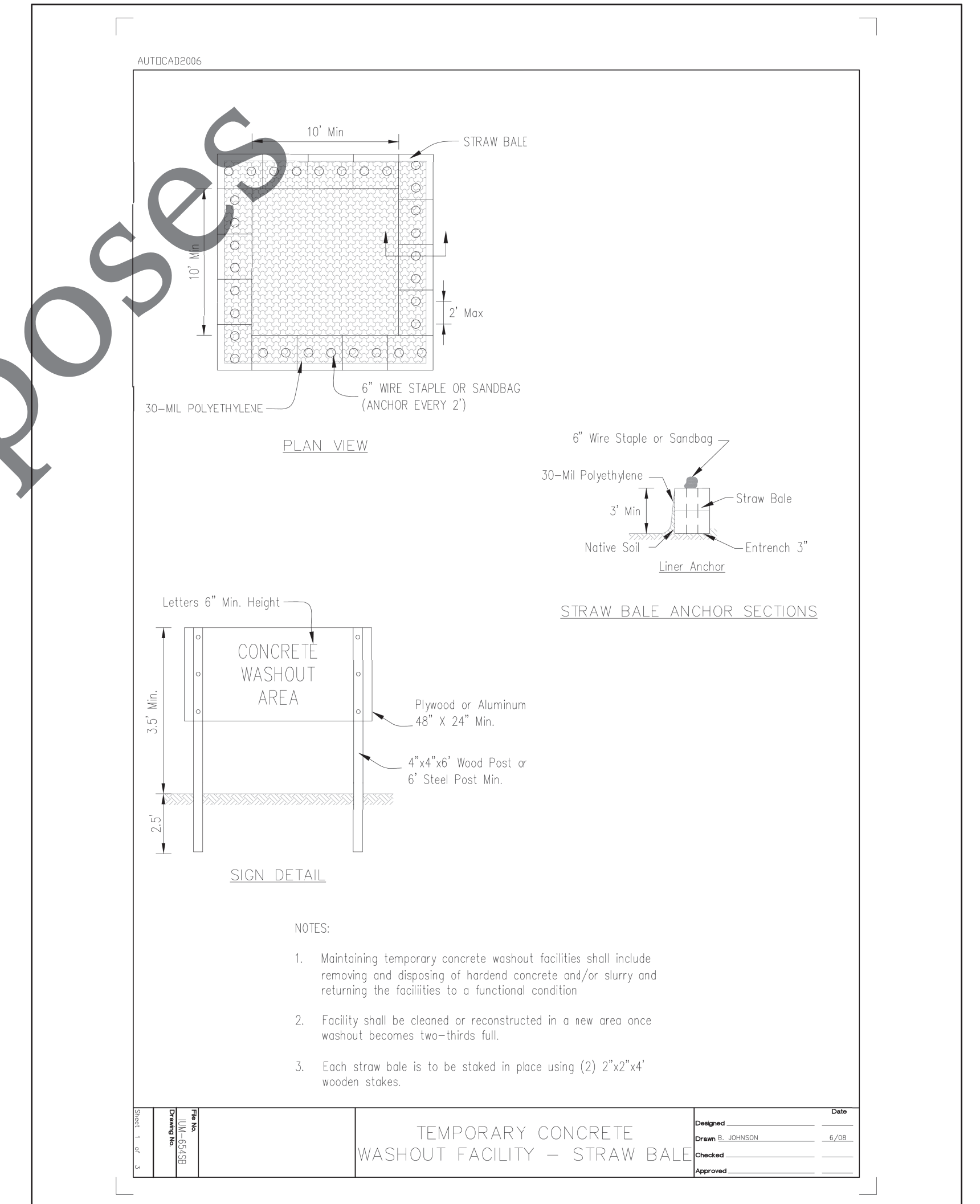
file: I:\District Projects\Household Hazardous Waste Site 2062101 Design\Drawings\HHW - Design.dwg



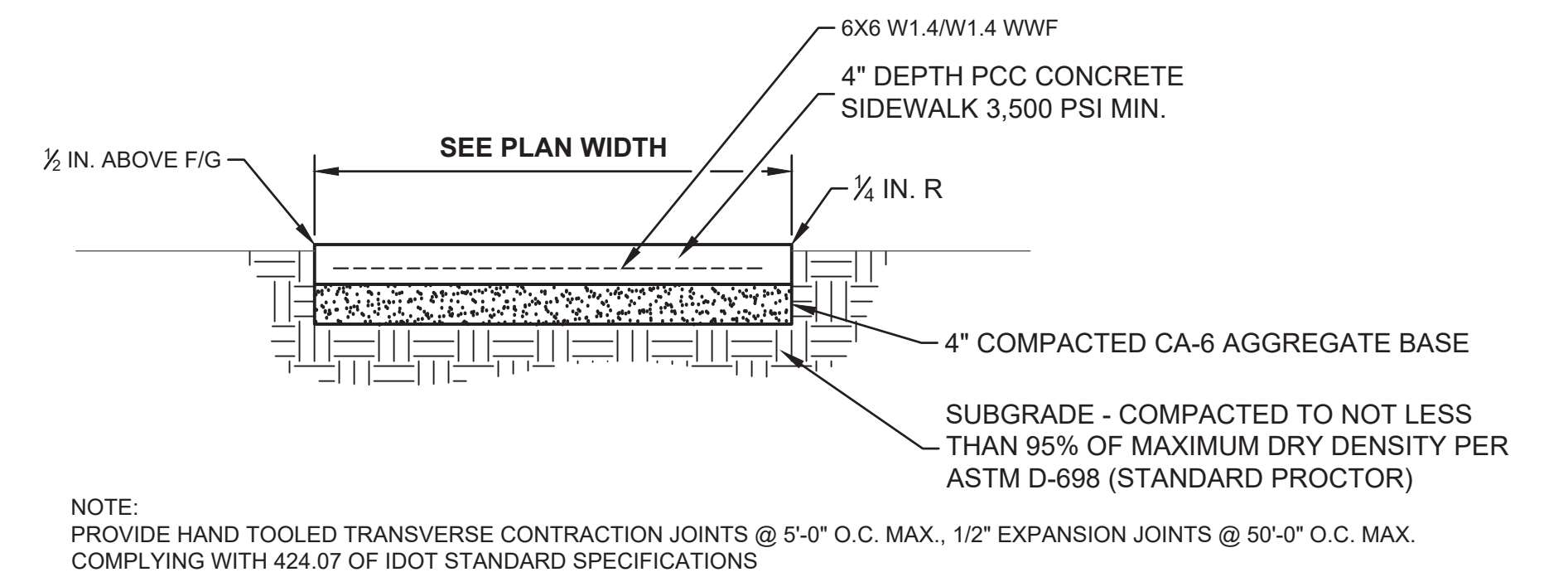


1 ADA PAVEMENT MARKING SYMBOL  
C106 NOT TO SCALE

THIS PLAN SET CONTAINS INFORMATION FOR THE COMPLETE PROJECT. WORK UNDER THIS BID INCLUDES FINAL SHAPING OF AGGREGATE, HMA PAVING OPERATIONS, AND PAVEMENT MARKINGS. OTHER INFORMATION SHOWN WITHIN PLAN SET TO BE BY OTHERS AND FOR INFORMATION ONLY.



2 CONCRETE WASHOUT DETAIL  
C106 NOT TO SCALE

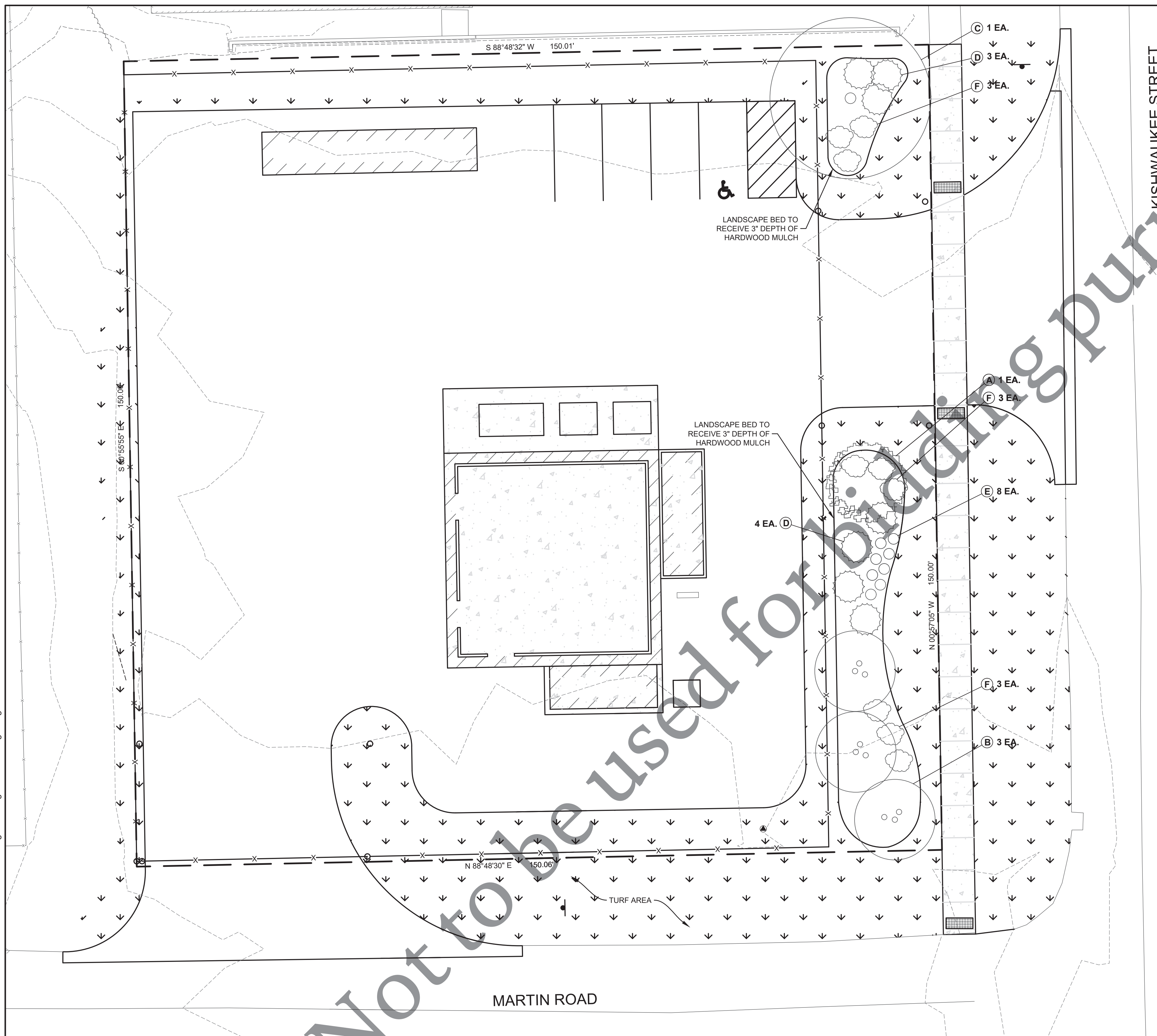


3 PUBLIC SIDEWALK DETAIL  
C106 NOT TO SCALE

No.	DATE	REVISION	INT.



file: I:\District Projects\Household Hazardous Waste Site 2062\01 Design\Drawings\HHW - Design.dwg



KISHWAUKEE STREET

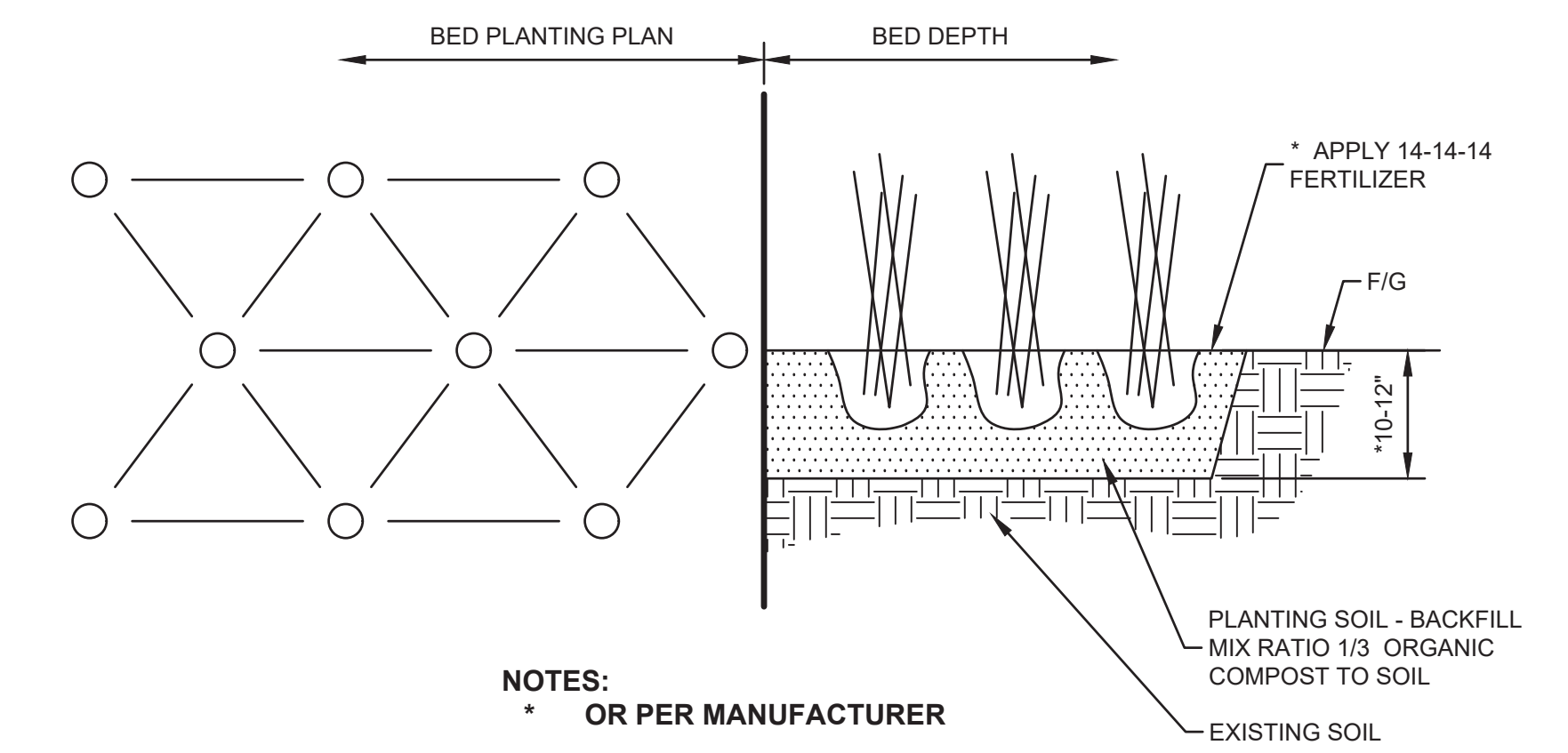
MARTIN ROAD

### TREE LIST

KEY	DESCRIPTION	COMMON NAME	QTY	SIZE	NOTES
(A)	SYRINGA RETICULATA	COMMON LILAC TREE	1	7' MIN.	MULTI STEM
(B)	BETULA NIGRA	RIVER BIRCH	3	6' MIN.	MULTI STEM
(C)	GLEDITSIA TRIACANTHOS	SYLINE HONEYLOCUST	1	2.5\"/>	

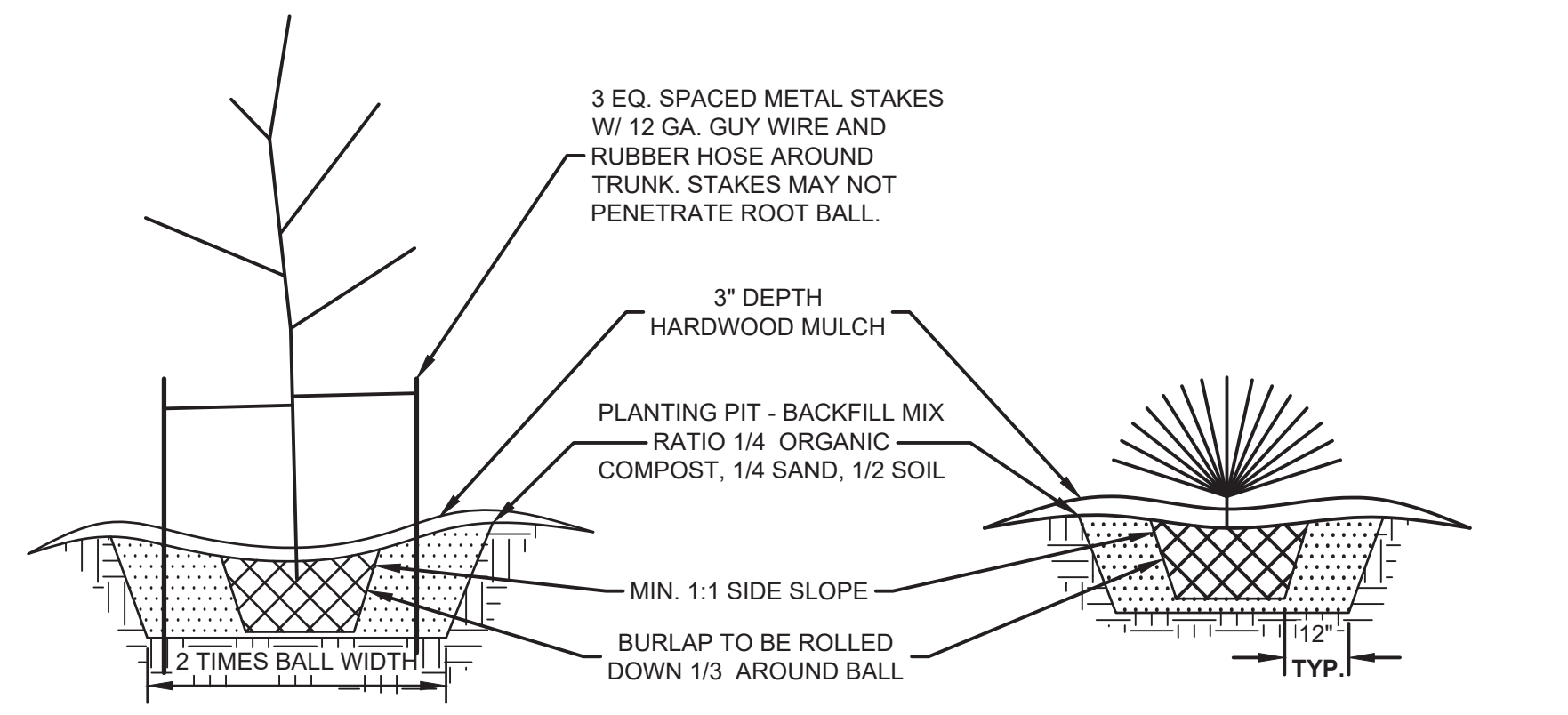
### PLANT LIST

KEY	DESCRIPTION	COMMON NAME	QTY	SIZE	NOTES
(D)	JUNIPERUS HORIZONTALIS HEGEDUS	GOOD VIBRATIONS GOLD JUNIPER	7	5 GAL	
(E)	SALVIA NEMOROSA X EAST FRIESLAND	FRIESLAND MEADOW SAGE	8	GALLON	2' O.C. PERENNIAL
(F)	RHUS AROMATICA GRO LO	GROW LOW FRAGRANT SUMAC	9	5 GAL	



**NOTES:**  
\* OR PER MANUFACTURER

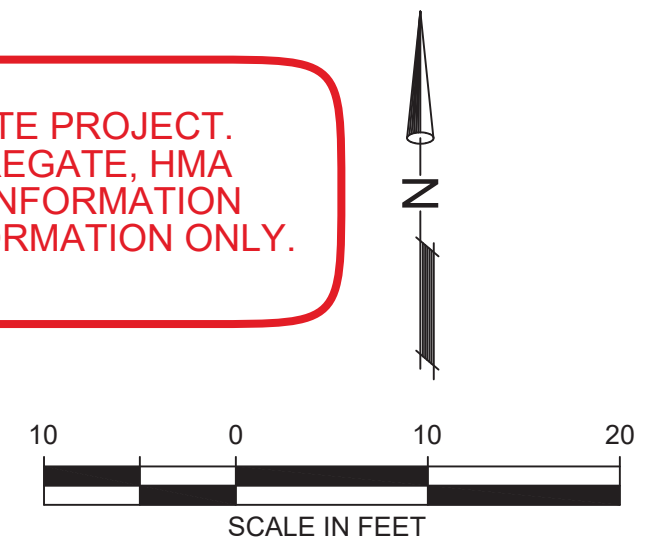
**BED PLANTING DETAIL**  
NTS



**TREE PLANTING DETAIL**  
NTS

**SHRUB PLANTING DETAIL**  
NTS

THIS PLAN SET CONTAINS INFORMATION FOR THE COMPLETE PROJECT. WORK UNDER THIS BID INCLUDES FINAL SHAPING OF AGGREGATE, HMA PAVING OPERATIONS, AND PAVEMENT MARKINGS. OTHER INFORMATION SHOWN WITHIN PLAN SET TO BE BY OTHERS AND FOR INFORMATION ONLY.



No.	DATE	REVISION	INT.

**HOUSEHOLD HAZARDOUS WASTE SITE  
CAPITAL IMPROVEMENT PROJECT #2217**

**LANDSCAPE PLAN**

Sheet No.  
C107

FOR BID      Date:  
4/24/2024