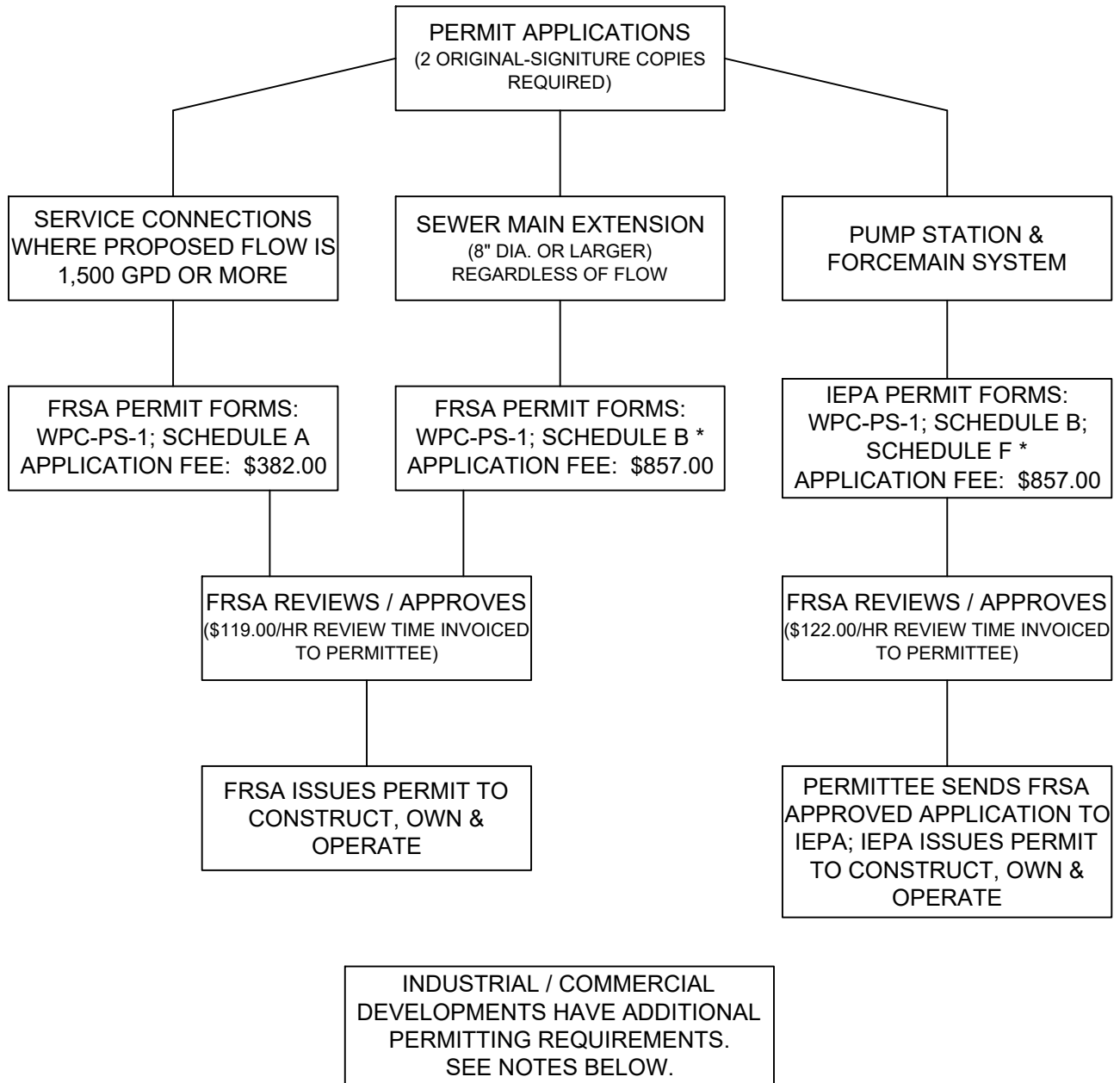


**PERMITTING PROCESS:
PUBLIC & PRIVATE SANITARY SEWER EXTENSIONS
(DOMESTIC STRENGTH WASTE)**



NOTES:

1. ALL FEES AND RATES ARE SUBJECT TO CHANGE WITHOUT PRIOR NOTICE. OTHER FEES AND RATES MAY APPLY.
2. ADDITIONAL SCHEDULES MAY BE REQUIRED* (SCHEDULE P, EROSION CONTROL; SCHEDULE T, TRUST DISCLOSURE, ETC.)
3. IEPA PERMIT FORMS, INCLUDING A SCHEDULE N, ARE REQUIRED FOR FACILITIES THAT WILL GENERATE NON-DOMESTIC STRENGTH WASTEWATER. FORMS ARE AVAILABLE AT <https://www2.illinois.gov/epa/topics/forms/water-forms/Pages/wastewater-permits.aspx>
4. FRSA PERMIT FORMS ARE AVAILABLE AT: fourrivers.illinois.gov
5. AN "I/C" PERMIT IS REQUIRED FOR ALL INDUSTRIAL / COMMERCIAL DEVELOPMENTS. I/C PERMITS MAY BE APPLIED FOR UPON COMPLETION OF THE IEPA / FRSA PERMIT REVIEW. VISIT THE FRSA'S WEBSITE FOR I/C APPLICATION FORMS, FEES AND PERMITTING REQUIREMENTS.