

**Rock River Water Reclamation District  
Rockford, Illinois**

**Bidding Requirements and Contract Forms**

**for**

**2020-2021 Manhole Lining**

**Capital Project No. 2113**

# **Rock River Water Reclamation District Rockford, Illinois**

## **Bidding Requirements and Contract Forms and *General Provisions and Technical Specifications* for *Sanitary Sewer Construction***

**for**

## **2020-2021 Manhole Lining**

**Capital Project No. 2113**

### **Board of Trustees**

Richard Pollack	.....	President
John Sweeney	.....	Vice President
Ben Bernstein	.....	Clerk/Treasurer
Donald Massier	.....	Trustee
Elmer Jones	.....	Trustee

### **Officials**

Timothy S. Hanson	.....	Executive Director
Christopher T. Baer, PE	.....	Director of Engineering

# Table of Contents

## **I. Bidding Requirements**

### **Article 1 Notice to Bidders**

### **Article 2 Instructions to Bidders**

- 1 General
- 2 Legal Requirements
- 3 General Instructions

### **Article 3 Detailed Specifications**

- 1 General
- 2 Manhole Lining
- 3 Sewer Flow Control
- 4 Access and Notification
- 5 Permit Requirements
- 6 Traffic Control and Safety
- 7 Warranty

## **II. Contract Forms**

Proposal  
Affidavit of Compliance  
Bid Bond  
Agreement  
Labor & Material Payment Bond  
Performance Bond

## **III. Manhole Rehabilitation List and Location Maps**

## **IV. Manhole Inspection Reports**

## **V. General Provisions and Technical Specifications for Sanitary Sewer Construction (separate document incorporated by reference)**

**Section I**

**Bidding Requirements**

## Article 1 — Notice to Bidders

The Rock River Water Reclamation District (District) will receive signed and sealed bids for the 2020-2021 Manhole Lining, Capital Project No. 2113, at the District office located at 3501 Kishwaukee Street, Rockford, Illinois until 10:00 a.m. on Wednesday, January 20, 2021, at which time and place responsive / responsible bids will be publicly opened and read aloud.

The 2020-2021 Manhole Lining, Capital Project No. 2113, consists of the rehabilitation of twenty-six (26) sanitary sewer manholes by application of a District-approved epoxy lining system. Work includes sewer flow control, manhole invert reconstruction, infiltration mitigation, surface preparation, lining application, and all other appurtenances as indicated on the plans and in the specifications.

Bidder's attention is called to Article 2 – Instructions to Bidders 3.8 requirements for Statement of Qualifications.

All underground construction, testing, and restoration shall be completed by April 30, 2021. Liquidated damages shall be \$300.00 per calendar day.

Bid documents may be obtained at a cost of \$50.00 per set (non-refundable) by contacting the District Engineering Department at (815) 387-7660.

Plans and specifications may also be viewed at the offices of the Northern Illinois Building Contractors Association at 1111 S. Alpine Rd, Rockford, IL. For more information, visit the District website at [www.rwrwd.dst.il.us](http://www.rwrwd.dst.il.us).


All construction shall be done in accordance with specifications on file with the District, including the *General Provisions and Technical Specifications for Sanitary Sewer Construction* (Current Edition) of the Rock River Water Reclamation District.

Each proposal must be accompanied by the District Bid Bond form with an acceptable Bid Security attached, in the amount of ten percent (10%) of the total bid price. This amount is a guarantee that, if the Proposal is accepted, a Contract will be entered into and its performance properly secured.

The successful bidder will be required to furnish a satisfactory Performance Bond in the full amount of the Bid or Proposal. No Bid shall be withdrawn without the consent of the District for a period of sixty (60) days after the scheduled time of receiving Bids.

The District, reserves the right to reject any or all bids, or any part thereof, or to accept any bid or any part thereof, or to waive any formalities in any bids, deemed to be in the best interest of the District.

Dated this 4th day of January, 2021

  
By: Timothy S. Hanson, Executive Director

## **Article 2 — Instructions to Bidders**

### **1 General**

#### **1.1 Scope and Intent**

This section of the contract documents is concerned with furnishing detailed information and requirements for preparing bids to prospective bidders, bidders' responsibility, the preparation and the submission of bids, basis for awarding the contract and other general information concerned with bidding and executing the contract.

#### **1.2 Contradictions**

If in the case of apparent contradiction between or among the Contract Documents, the Contract Documents shall be consulted in the following order: Addenda, Agreement, Supplementary Drawings, Instructions to Bidders, Detailed Specifications, Plans, District General Provisions and Technical Specifications for Sanitary Sewer Construction. The language in the first such document in which language regarding the conflict, error or discrepancy occurs shall control.

### **2 Legal Requirements**

#### **2.1 Illinois Regulations**

1. Public Act 100-1177 requires the Bidder to comply with prevailing wages in accordance with the Illinois Department of Labor Standards. The State of Illinois requires contractors and subcontractors on District projects to submit certified payroll reports via the State's Certified Transcript of Payroll Portal currently found at: <https://www2.illinois.gov/idol/Laws-Rules/CONMED/Pages/certifiedtranscriptofpayroll.aspx>. The Bidder is responsible for verifying current information at the State's website.
2. Public Act 83-1030 entitled "Steel Products Procurement Act" requires that steel products used or supplied in performance of this contract or subcontract shall be manufactured or produced in the United States with three exceptions.

The provisions of this Section shall not apply:

- a. Where the contract involves an expenditure of less than \$500.
  - b. Where the executive head of the public agency certifies in writing that
    - i. the specified products are not manufactured or produced in the United States in sufficient quantities to meet the agency's requirements, or
    - ii. obtaining the specified products, manufactured or produced in the United States would increase the cost of the contract by more than 10%.
  - c. When its application is not in the public interest.
2. Public Act 96-929 (30 ILCS 570) provides that Illinois residents be employed on Illinois public works projects, provided there has been a period of excessive unemployment (5%) in the State of Illinois as defined in the Act; and, further, that Illinois workers are available and capable of performing the particular type work involved.

3. Public Act 101-0221 requires that any party to a contract adopt and promulgate written sexual harassment policies that include, as a minimum, the following information:
  - a. the illegality of sexual harassment
  - b. the definition of sexual harassment under Illinois State law
  - c. a description of sexual harassment, utilizing examples
  - d. my (our) organization's internal complaint process including penalties
  - e. the legal recourse, investigative and complaint process available through the Illinois Department of Human Rights and the Illinois Human Rights Commission
  - f. directions on how to contact the Department and the Commission
  - g. protection against retaliation as provided by Section 6-101 of the Illinois Human Rights Act

Upon request, this information shall be provided to the Illinois Department of Human Rights and the District.

4. With regard to nondiscrimination in employment, the Contractor for this project will be required to comply with the Illinois Fair Employment Practices Commission's Rules and Regulations.
5. The Contractor for this project shall comply with the Occupational Safety and Health Act.
6. The Contractor for this project shall comply with the Federal Drug-Free Workplace Act.
7. Public Act 96-1416 requires the Certification of Clean Construction and Demolition Debris (CCDD) and uncontaminated soil prior to disposal at a CCDD fill site. The Contractor for this project shall comply with Public Act 96-1416 and be responsible for the certifications and any fees associated with the disposal at a CCDD fill site.
  - a. In the event that contaminated soil is uncovered on the project, the Contractor shall notify the District immediately. Any extra costs resulting from the presence of contaminated soil shall be evaluated in accordance with District General Provisions & Technical Specs for Sanitary Sewer Construction, General Conditions: Article 5 – Time Provisions and Article 8 – Changes.

## **2.2 Americans with Disabilities Act**

The Contractor for this project will comply with all applicable requirements of the Americans with Disabilities Act of 1990 (ADA). The Contractor will hold harmless and indemnify Rock River Water Reclamation District (District) and their representatives from all:

1. suits, claims, or actions
2. costs, either for defense (including but not limited to reasonable attorney's fees and expert witness fees) or for settlement
3. damages of any kind (including but not limited to actual, punitive, and compensatory damages)

relating in any way to or arising out of the ADA, to which said firm is exposed or which it incurs in the execution of the contract.

### **3 General Instructions**

#### **3.1 Bidder's Responsibility**

Bidders are cautioned not to submit proposals until having carefully examined the entire site of the proposed work and adjacent premises and the various means of approach and access to the site, and having made all necessary investigations to inform themselves thoroughly as to the facilities for delivering, placing and handling the materials at the site, and having informed themselves thoroughly as to all difficulties involved in the completion of all the work under this Contract in accordance with its requirements.

Bidders must examine the Plans, Specifications and other Contract Documents and shall exercise their own judgment as to the nature and amount of the whole of the work to be done and for the bid prices must assume all risk of variance, by whomsoever made, in any computation or statement of amount or quantities necessary to complete fully the work in strict compliance with the Contract Documents. The Bidder must satisfy himself by making borings or test pits, or by such methods as he may prefer, as to the character and location of the materials to be encountered or work to be performed. No pleas of ignorance of conditions that exist or that may hereafter exist, or of conditions or difficulties that may be encountered in the execution of the work under this Contract, as a result of failure to make the necessary examinations and investigations, will be accepted as an excuse for any failure or omission on the part of the Contractor to fulfill, in every detail, all of the requirements of the Contract Documents, or will be accepted as a basis for any claims whatsoever for extra compensation or for an extension of time.

**The Contractor is responsible for verifying the location of all existing utilities in the project areas.**

The Bidder, therefore, shall satisfy himself by such means as he may deem proper as to the location of all structures that may be encountered in construction of the work.

#### **3.2 Addenda and Interpretations**

No interpretation of the meaning of the Plans, Specifications, or other Contract Documents will be made to any bidder orally. Every request for such interpretation must be in writing addressed to the Rock River Water Reclamation District, 3501 Kishwaukee Street, Rockford, Illinois. To be given consideration, such request must be received at least five (5) days prior to the date fixed for the opening of bids. Any and all such interpretations and any supplemental instructions will be in the form of written addenda which, if issued, will be sent by email, fax, or certified mail with acknowledgement of receipt requested, to all prospective bidders, at the respective addresses furnished for such purposes, not later than three (3) days prior to the date fixed for the opening of bids. Failure of any bidder to receive any such addenda or interpretation shall not relieve said bidder from any obligation under his bid as submitted. All addenda so issued shall become part of the Contract Documents.

#### **3.3 Laws and Regulations**

The prospective bidder is warned that he must comply with all laws of the United States Government, State of Illinois, all ordinances and regulations of the District in the performance of the work under this contract. The Bidder's attention is specifically called to that provision of the General Conditions regarding the rate of wage to be paid on the work.

#### **3.4 Quantities Estimated Only**

Bidders are warned that the estimate of quantities of the various items of work and materials, as set forth in the proposal form, is approximate only and is given solely to be used as a uniform basis for the comparison of bids. The quantities actually required to complete the contract work may be less



or more than so estimated, and if awarded a contract for the work specified, the Contractor further agrees that he will not make any claim for damages or for loss of profits or for an extension of time because of a difference between the quantities of the various classes of work assumed for comparison of bids and quantities of work actually performed.

### **3.5 Form, Preparation, and Presentation of Proposals**

For particulars as to the quantity and quality of the supplies, materials and equipment to be furnished, and the nature and extent of the work or labor to be done, prospective bidders are referred to the Contract Documents, which may be examined or obtained at the office of the District.

Each bid will be submitted upon the prescribed proposal form. All blank spaces for bid prices must be filled in, in ink, with the unit or total sum or both for which the proposal is made. If the proposal contains any omissions, erasures, alterations, additions or items not called for in the itemized proposal, or contains irregularities of any kind, such may constitute sufficient cause for rejection of bid. In case of any discrepancy in the unit price or amount bid for any item in the proposal, the unit price as expressed in figures will govern. In no case is the agreement form to be filled out or signed by the bidder.

***Bidders may opt to contact the District's Engineering Department at 815.387.7660 to obtain an electronic Proposal form. If used, this form must be attached to the hard copy proposal form and appropriately signed and executed with the bid.***

The bid must be verified and be presented on the prescribed form in a sealed envelope on or before the time and at the place stated in the Advertisement for Bids, endorsed with the name of the person, firm or corporation presenting it, the date of presentation, and the title of the work for which the bid is made. If forwarded by mail, the sealed envelope containing the proposal and marked as directed above, must be enclosed in another envelope addressed to Clerk of the Rock River Water Reclamation District, 3501 Kishwaukee Street, Rockford, Illinois, 61109 and be sent preferably by certified mail. The District will not accept facsimile generated bids.

### **3.6 Bid Security**

Each proposal must be accompanied by the District Bid Bond form with an acceptable Bid Security attached, in the amount specified in Article One, Notice to Bidders. This sum is a guarantee that, if the Proposal is accepted, a contract will be entered into and its performance properly secured. The District's Bid Bond Form included in the bid packet must be used. No other Bid Bond form may be substituted.

Within ten (10) days after the opening of bids, the deposits of all but the three lowest bidders will be returned. The deposits of the remaining two unsuccessful bidders will be returned within three (3) days after the execution of the contract, or, if no such contract has been executed, within sixty (60) days after the date of opening bids. The deposit of the successful bidder will be returned only after he has duly executed the contract and furnished the required bond and insurance.

### **3.7 Affidavit of Compliance**

**Each proposal must be accompanied by an executed Affidavit of Compliance.** A separate Affidavit of Compliance form is enclosed with the Proposal packet. Failure to submit an executed Affidavit of Compliance with the proposal may constitute sufficient cause for rejection of the bid.

### **3.8 Statement of Qualifications**

Each proposal must be accompanied by a Statement of Qualifications certifying that the bidder is registered to do business in the State of Illinois and provides documentation that the bidder possesses the appropriate financial, material, equipment, facility and personnel resources and expertise

necessary to meet all contractual obligations. The bidder shall document no less than three (3) successfully completed contracts for sanitary sewer manhole rehabilitation by epoxy lining with the proposed lining system. The Bidder's proposed lining system shall meet the requirements outlined in Article 3, Part 2. Proposal including products that do not meet the specified requirements will not be considered. The District reserves the right to request additional information as needed to evaluate bids prior to making an award.

### **3.9 Comparison of Proposals**

Bids on item contracts will be compared on the basis of a total computed price arrived at by taking the sum of the estimated quantities of each item, multiplied by the corresponding unit prices and including any lump sum bids on individual items, in accordance with the estimate of quantities set forth in the proposal form. Bids on lump sum contracts will be considered upon the basis of the lowest sum bid.

### **3.10 Acceptance of Bids and Basis of Award**

No bidder may withdraw his bid after the scheduled closing time for receipt of bids, for at least sixty (60) days.

The contract will be awarded, if at all, to the lowest responsive, responsible bidder. The Rock River Water Reclamation District also reserves the right to reject any or all bids.

The bidder whose proposal is accepted shall enter into a written contract for the performance of the work and furnish the required bonds and insurance certificate within ten (10) days after written notice by the Engineering Manager of the District has been served on such bidder personally or by mailing a postpaid wrapper to such bidder at the address given in his proposal. If the bidder to whom the contract is awarded refuses or neglects to execute it or fails to furnish the required bond and insurance within five (5) days after receipt by him of the notice, the amount of his deposit shall be forfeited and shall be retained by the District as liquidated damage and not as a penalty. It being now agreed that said sum is a fair estimate of the amount of damages that the District will sustain in case said bidder fails to enter into a contract and furnish the required bond and insurance. No plea of mistake in the bid shall be available to the bidder for the recovery of his deposit or as a defense to any action based upon the neglect or refusal to execute a contract.

#### **3.10.1 Evaluation of Responsiveness**

The responsiveness of bidders will be judged on the basis of the completeness of the bid submitted. To be responsive, a Bid must be submitted on the forms provided as part of the Bid Documents and comply with all the requirements of the Instruction to Bidders.

#### **3.10.2 Evaluation of Responsibility**

To be judged as responsible, the bidder shall:

- a. Have adequate financial resources for performance, the necessary experience, organization, technical qualifications, and facilities, or a firm commitment to obtain such by subcontracts;
- b. Be able to comply with the required completion schedule for the project;
- c. Have a satisfactory record of integrity, judgment, and performance, including, in particular, any prior performance on contracts from the District;
- d. Have an adequate financial management system and audit procedures, that provide efficient and effective accountability and control of all property, funds, and assets;

- e. Conform to the civil rights, equal employment opportunity and labor law requirements of the Bid Documents.
- f. Have satisfactorily completed no less than three (3) sanitary sewer system contracts within the past five (5) years of equal or greater value to the bid being submitted.

### **3.11 The Rejection of Bids**

The District reserves the right to reject any bid if the evidence submitted in the statement of the bidder's qualifications, or if investigation of such bidder fails to satisfy the District that such bidder is properly qualified to carry out the obligations and to complete the work contemplated therein. Any or all proposals will be rejected if there is reason to believe that collusion exists among the bidders. Conditional bids will not be accepted. The District reserves the right to reject any and all bids and to accept the bid which they deem most favorable to the interest of the District after all proposals have been examined and canvassed.

### **3.12 Insurance and Bonding**

Contractor shall provide all necessary insurance and bonds required to complete the project. No more than ten (10) calendar days subsequent to the District's issuance of an award letter, the Contractor shall provide documentation to prove that he has obtained all required insurance and bonds. The District shall be the sole judge as to the acceptability of any such proof.

Contractor shall provide and maintain all insurance and bonds as required by the District.

#### **3.12.1 General**

The Contractor shall ensure that:

1. All insurance policies shall be specific to the project.
2. The insurance certificate shall state: This certifies that the insurance coverage meets or exceeds that required for the 2020-2021 Manhole Lining, Capital Project No. 2113.
3. The District shall be named as Additional Insured in all policies; this shall include the Owners Contractors Protective Policy option.
4. All completed operations coverages and bonds shall remain in force for a period of two (2) years following acceptance of the project and completed operations shall stay in force for two (2) years following completion of the project.

#### **3.12.2 Insurance**

The Contractor shall, for the duration of the contract and for two (2) years following project acceptance, maintain the following:

1. **General Liability**: \$1,000,000 combined single limit per occurrence for bodily injury, personal injury and property damage. If Commercial General Liability Insurance or other form with a general aggregate limit is used, either the general aggregate limit shall apply separately to this project or the general aggregate limit shall be twice the required occurrence limit. The Contractor shall provide "XCU" coverage.
2. **Automobile Liability**: \$1,000,000 combined single limit per accident for bodily injury and property damage including coverages for owned, hired or non—owned vehicles, as applicable.
3. **Workers' Compensation and Employers Liability**: Workers' Compensation limits as required by statute and Employers Liability limits of \$500,000 per accident and \$500,000 per disease.
4. **Umbrella**: \$2,000,000 per occurrence/aggregate for contracts valued at \$500,000 or over, or \$1,000,000 for contracts below \$500,000. \$10,000 is maximum allowable self-retained limit.

5. Errors and Omissions: If the Contractor performs professional services, he shall maintain errors and omissions insurance with a limit no lower than \$1,000,000 for the duration of the contract.

The policies shall contain, or be endorsed to contain, the following provisions in the General Liability and Automobile Liability Coverage's:

- a. Unless otherwise provided in paragraph "c" of this section, the District, its officers, officials, employees and volunteers shall be covered as additional insureds as respects liability arising out of activities performed by or on insured's general supervision of the Contractor, products and completed operations of the Contractor, premises owned, occupied or used by the Contractor, or automobiles owned, leased, hired or borrowed by the Contractor. The coverage shall contain no special limitations on the scope of protection afforded to the District, its officers, officials, employees, volunteers, or agents.
- b. Unless otherwise provided in paragraph "c" of this section, the Contractor's insurance coverage shall be primary insurance as respects the District, its officers, officials, employees, volunteers, and agents. Any insurance or self-insurance maintained by the District, its officers, officials, employees, volunteers, or agents shall be excess of the Contractor's insurance and shall not contribute with it.
- c. As an acceptable alternative to provisions "a" and "b" of this section, the Contractor may provide owner's and contractor's protective liability insurance with coverage limits, named insureds, and in conformity with all applicable specifications of this section.
- d. Any failure to comply with reporting provisions of the policies shall not affect coverage provided to the District, its officers, officials, employees, volunteers, or agents.
- e. The Contractor's insurance shall apply separately to each insured against whom claim is made or suit is brought, except with respect to the limits of the insurer's liability.
- f. All Coverages — Each insurance policy required by this clause shall not be suspended, voided, canceled by either party, reduced in coverage, or in limits except after thirty (30) days' prior written notice by certified mail, return receipt requested, has been given to the District.

### **3.12.3 Best's Ratings**

The District shall be the sole judge of whether or not said insurer's ratios are satisfactory. The District's decision shall be final and the District's bidding procedures contain no appeal provision.

1. Alphabetical Rating: For purposes of this Request for Bids, "insurer" shall mean any surety, insurance carrier, or other organization which proposes to provide an insurance policy or bond for the Contractor. No insurer or surety rated lower than "A-, Excellent" in the current *Best's Key Rating Guide* shall be acceptable to the District.
2. Financial Size Rating: Provided an insurer's alphabetical rating is satisfactory, the District will examine said insurer's financial size rating.
  - a. If Best classifies the insurer XII or larger, said insurer shall be acceptable to the District.
  - b. If Best classifies the insurer as smaller than XII, but larger than VI, said insurer shall be submitted to the District's Business Manager and/or the District's insurance consultant for review.

Financial Size ratings less than VII are not acceptable and will disqualify the Contractor.

#### **3.12.4 Performance Bond and Labor & Materials Payment Bond Form**

The Contractor shall provide a Performance Bond and Labor & Materials Payment Bond form acceptable to the District. The performance bond shall be for either 100% of the contract price or for the Contractor's unit price times the estimated number of units, as applicable.

This Request for Bids contains a Performance Bond and a Labor & Material Bond form for the Contractor's use.

If the Contractor fails to provide acceptable bonds within the specified time, he shall be in default.

#### **3.12.5 Correction of Contractor's Insurance or Bond Deficiencies**

If the District determines that the Contractor's insurance or bond documentation does not conform to these specifications, the District shall inform said Contractor of the non-conformity. If said Contractor fails to provide conforming insurance or bond documentation within five (5) calendar days of the District's deficiency notice, he shall be in default.

#### **3.12.6 Indemnification Clause**

Contractor shall protect, indemnify, hold and save harmless and defend the District, its officers, officials, employees, volunteers, and agents against any and all claims, costs, causes, actions and expenses, including but not limited to attorney's fees incurred by reason of a lawsuit or claim for compensation arising in favor of any person, including the employees, officers, independent contractors, or subcontractors of the Contractor or District, on account of personal injuries or death, or damages to property occurring, growing out of, incident to, or resulting directly or indirectly from the performance by the Contractor or subcontractor, whether such loss, damage, injury or liability is contributed to by the negligence of the District or by premises themselves or any equipment thereon whether latent or patent, or from other causes whatsoever, except that the successful bidder shall have no liability for damages or the costs incident thereto caused by the sole negligence of the District.

The indemnification shall not be limited by a limitation on amount or type of damages payable by or for the Contractor or its subcontractor under any employee benefits act including, but not limited, to the Workers Compensation Act.

No inspection by the District, its employees, or agents shall be deemed a waiver by the District of full compliance with the requirements of the Contract. This indemnification shall not be limited by the required minimum insurance coverages in the Contract.

#### **3.13 Tax Exemption**

The District is exempt, by law, from paying bidder Federal Excise Tax and Illinois Retailers' Occupational Tax. Therefore, the bidder shall exclude those taxes from his bid. The District's tax exemption number is E9992-3696-06. The bidder shall include all applicable taxes in his bid price.

## Detailed Specifications

### 1 General

These Detailed Specifications are concerned with the rehabilitation of sanitary manholes by restoring structural integrity, grouting cracks, eliminating clear water infiltration and lining with a minimum of 175 mils of a District-approved epoxy lining system.

Throughout these specifications, the terms “Owner,” “District” and “Engineer” shall be synonymous.

The *General Provisions and Technical Specifications for Sanitary Sewer Construction in the Sanitary District of Rockford*, current edition, shall be the predominant specifications for this project. The current edition is viewable online at <https://www.rwrddst.il.us/wp-content/uploads/General-Provisions-Tech-Specs1.pdf>

The Contractor shall:

1. Be responsible for any damages caused by his operations to existing structures above or below the ground as noted in *G.C. 12:1, Suits at Law* (Pages 16 and 17) of the *General Provisions and Technical Specifications for Sanitary Sewer Construction*.
2. Notify applicable roadway authorities and the District seventy-two (72) hours, minimum, before beginning work.
3. Be responsible for maintaining the current level of utility and other services to any properties affected by construction throughout the course of this project.
4. Be responsible for the support, protection, relocation and/or reconstruction of all utilities, power poles, signs, lights, signals, underground utilities, etc., in the vicinity of the proposed construction whether temporary or permanent in accordance with *G.R. 9.1* (Page 30) of the *General Provisions and Technical Specifications for Sanitary Sewer Construction*.
5. Provide uninterrupted access to residences and/or businesses, schools, etc., at all times (i.e. drives, roadways, ramps must remain open or temporary access must be provided) for the duration of this project. The cost of all materials, equipment, labor, etc., necessary to ensure continuous access shall be included in the various contract unit prices.

The District will not supervise, direct, control, have authority over or be responsible for the Contractor's means, methods, techniques, sequences or procedures of construction, or the safety precautions and programs incident, thereto, or for any failure of the Contractor to comply with laws and regulations applicable to the performance of the Contract work. The District will not be responsible for the Contractor's failure to perform or furnish all work in accordance with the Contract Documents.

### 2 Manhole Lining

#### 2.1 General

The Contractor shall be responsible for rehabilitating the specified sanitary sewer manholes by applying 175 mils of a District-approved epoxy lining system to existing manhole walls, benches and inverts. Prior to applying the epoxy lining, the Contractor shall clean the existing manhole removing all roots, mineral deposits or other debris, restore structural integrity, eliminate clear

water infiltration, and prepare the surfaces to be lined in accordance with the approved lining system manufacturer's recommendations.

## **2.2 Manhole Preparation**

1. **Water and Electricity:** The Contractor shall be responsible for supplying all water and electricity required to complete the Contract work. To obtain public water for this project the Contractor will be required to complete a City of Rockford Hydrant Permit and Meter Request. If required, the Contractor shall obtain a calibrated water meter from the Water Department to gauge usage of water. Contact Jamie Rott, City of Rockford Water Superintendent, at 779-348-7654. If public water is not directly available at specific sites, the Contractor shall be responsible for delivery of water to the site. The Contractor shall be responsible for all fees charged for water usage.
2. **Protection of Downstream Sewers:** Prior to beginning any manhole preparation work, the Contractor shall furnish and install screens, baskets, or other devices to prevent debris from being released downstream. The Contractor shall be responsible for the proper disposal of all debris collected.
3. **Cleaning:** Contractor shall clean all interior surfaces, including the manhole bench and invert by use of a 1,500 psi, minimum, water spray.
4. **Removal of Unsound Material:** The Contractor shall remove all loose or unsound concrete, mortar, or other material that would jeopardize the integrity of the final product.
  - a. If portions of the manhole bench and invert require removal, the Contractor shall implement bypass of the influent flow by means of a flow through plug(s) as detailed in *Part 3, Sewer Flow Control*.
5. **Patching Voids:** Voids greater than 2" in depth shall be patched with a rapid-setting, fiber-reinforced, high-early-strength, hand-mixed, hand-applied Portland cement or calcium aluminate based cementitious material, with a minimum compressive strength of 1,400 psi at 6 hours per ASTM C109.
6. **Infiltration Elimination:** Prior to lining, the Contractor shall stop all active leaks in the manhole by a combination of the following methods, or District-approved equivalent:
  - a. Stop active leaks utilizing a rapid-setting, hand-mixed, hand-applied, cementitious material.
    - i. If required, provide weep holes to localize infiltration during application of cementitious materials. Weep holes must be plugged prior to liner application. WEEPHOLES ARE NOT ALLOWED IN PIPE SECTIONS.
  - b. If patching with cementitious materials not eliminate manhole infiltration, the Contractor shall drill through the structure as required to inject a chemical grout designed for active infiltration mitigation into the soil surrounding the structure.
    - i. Grout shall be Avanti AV-100 or District-approved equal.
    - ii. Grout shall be injected with an airless pump or similar equipment capable of a 3,000 psi operating pressure.

7. Inspection of Final Preparation: No lining material shall be installed until preparation work has been inspected and approved by a District Inspector.

### **2.3 Epoxy Liner**

1. Approved Lining Systems: One (1) of the following lining systems shall be used. Bidder shall indicate the proposed lining system on the Proposal form. Proposals for non-District-approved liner systems will not be considered.
  - a. Raven Lining Systems, 405FS, 100% Solids Ultra High Build Epoxy.
  - b. Madewell Mainstay DS-5 High Build Epoxy.
  - c. Warren Environmental, Inc., 405FS 100% Solids Ultra High Build Epoxy.
2. Application: The Contractor shall adhere to the lining system manufacturer's recommendations for material handling and application. Where required, the Contractor shall implement sanitary sewer flow control methods conforming to *Part 3, Sewer Flow Control* of these specifications. The costs of sewer flow control shall be incidental to lining operation costs.
3. Finished Thickness: The minimum finished liner thickness shall be 175 mils. Liner may be applied by spray equipment, trowel, brush or other suitable method in accordance with manufacturer requirements and as field conditions allow.
4. Workmanship: Finished surface shall be smooth and uniform. Contractor will be required to remove lumps and fins protruding from the finished surface by more than 1/2".

### **2.4 Required Submittals**

The Contractor shall submit the following documents for District review and approval prior to the start of construction:

1. Construction schedule.
2. Cementitious patching material specifications and material and safety data.
3. Chemical grout material specification.
4. Pressure grouting equipment specifications.
5. Epoxy lining system technical specifications and material safety data sheets.
6. Downstream sewer protection device/plan.

### **2.5 Measurement and Payment**

*4' Diameter Manhole Rehabilitation and Lining – Vertical Surfaces* shall include all sewer flow control, preparation work, and epoxy liner application from the bottom of the manhole wall to the bottom of manhole access frame. Payment will be made at the Contract unit price per Vertical Foot (VF) of lining.

*4' Diameter Manhole Invert Rehabilitation and Lining* shall include all sewer flow control, preparation work and epoxy liner installation from the flow line of the manhole to the bottom of the manhole wall, including the joint between the wall and bench and around all existing pipe penetrations. Payment will be made at the Contract unit price per Each (EA).



### **3 Sewer Flow Control**

#### **3.1 General**

The Contractor shall be responsible for controlling the flow in the sewers to facilitate invert preparation work and the application of the epoxy lining. With District coordination and approval, the Contractor shall be allowed to reduce or eliminate the amount of flow by plugging or blocking upstream lines and utilizing flow-through plugs. Flow-through pipes shall be at least six inches (6") in diameter. Plugs shall be as manufactured by Lansas or District-approved equivalent.

The Contractor shall be responsible for maintaining sewer service to all properties upstream of the manhole(s) where work is being performed and any damage caused by back-ups due to work operations. The Contractor shall monitor levels of sanitary sewer flow at upstream manholes during sewer flow control operations.

All blocks and/or plugs shall be restrained to prevent washing downstream and shall be removed at the end of each work day.

#### **3.2 Required Submittals**

1. Proposed sewer flow control equipment specifications.

#### **3.3 Payment**

Cost of sewer flow control measures shall be incidental to manhole lining and invert rehabilitation Contract pay items.

### **4 Access and Notification**

#### **4.1 General**

The location map provided indicates the location of existing sanitary sewer easements. These easements are the only access points the District is able to provide. Any additional access easements and/or permissions shall be the responsibility of the Contractor to obtain.

The Contractor may utilize all-terrain-vehicles, wheeled carts, or other means to transport the required equipment to the proposed manhole rehabilitation sites. No trees or shrubs shall be removed and/or disturbed in this project.

The Contractor shall restore or replace any property damaged within the easements, including, but not limited to, turf areas, pavement, landscaping or structures that existed within the easement(s) prior to the Contractor's use of the easement(s) to the satisfaction of the District.

Contractor shall notify affected home or business owners forty-eight (48) hours, minimum, prior to beginning work.

#### **4.2 Required Submittals**

1. Copies of any additional access easements or written permissions to access private property.

#### **4.3 Payment**

Cost of access and notification efforts shall be incidental to manhole lining and invert rehabilitation Contract pay items.

### **5 Permit Requirements**

#### **5.1 General**

The Contractor shall comply with the requirements of any and all permits required for the construction of this project. For work within public Right-of-Way, a utility permit from the appropriate roadway authority must be obtained.

Once a project schedule is received, the District will submit a utility permit to the City of Rockford. The City Utility permit contact is Jordan Masemore (779-348-7174 and email [Jordan.masemore@rockfordil.gov](mailto:Jordan.masemore@rockfordil.gov)). The City of Rockford will waive the permit fee for this project.

#### **5.2 Required Submittals**

1. Copies of executed Right-of-way permits, as applicable.

#### **5.3 Payment**

Costs of permit procurement and compliance shall be incidental to the various manhole lining and invert rehabilitation Contract pay items.

### **6 Traffic Control and Safety**

#### **6.1 General**

The Contractor shall be solely responsible for the safety of the operations, and shall comply with all state, local and OSHA regulations. The Contractor shall obtain all permits required by the governing roadway agencies and shall implement and maintain approved traffic control measures, including detour routes, if required. Traffic control and protection shall be in accordance with the current IDOT standards and specifications.

During the course of construction, the Contractor shall keep a minimum of one (1) traffic lane open on any affected street.

The Contractor shall comply with all rules and regulations of the State, County, and City authorities regarding closing or restricting the use of public streets or highways. No public or private road shall be closed, except by express permission of the roadway authority or owner. Contractor shall conduct the work so as to minimize obstructions to traffic and normal commercial operations. Contractor shall protect all obstructions within traveled roadways by installing approved signs, barricades, and lights where necessary for the safety of the public. The Contractor shall notify the appropriate roadway authority seventy-two (72) hours, minimum, prior to beginning any work for approval of traffic control on affected streets, including any detour routes and signage required.

The Contractor shall comply with the requirements of any and all permits required for the construction of this project. For any excavation in roadways, a road cut permit will be required from the roadway

authority. The Contractor shall provide all insurance, bonds, traffic control plans, etc., as required by the necessary permits. The Contractor shall also obtain and comply with any additional permits required for the completion of this project and shall provide all insurance, bonds, etc., as required by these permits at no extra cost.

When required by regulation or deemed necessary for safety, the Contractor shall furnish flagmen or guards with approved high-visibility apparel and appropriate traffic control devices.

**6.2 Required Submittals – Not used.**

**6.3 Payment**

Traffic control measures shall be incidental to manhole lining and invert rehabilitation Contract pay items. No separate payment will be made for these measures.

**7 Warranty**

Suppliers shall implicitly warrant that their products and all product components are suitable and appropriate for the intended application and are free from all material, design or workmanship defects. Said warranty shall inure to the benefit of the District. The foregoing shall apply to all products and/or product components, whether fabricated or constructed as directed by the contract documents or produced independently by an outside source.

The Contractor shall unconditionally warrant all installed products and workmanship for a period of one (1) year commencing on the date all work is completed and accepted, and final payment is issued by the District. The foregoing shall apply to completed restoration of areas disturbed in construction. The Contractor shall repair, at his own expense, any work defects that become apparent within the warranty period. All repairs will be performed in a manner mutually agreed upon by the District and the Contractor and shall be covered under the same warranty period stated above.

*Not to be used for bidding purposes*

**Section II**  
**Contract Forms**

## Proposal

**Project:** 2020-2021 Manhole Lining, Capital Project No. 2113

**Location:** Existing sanitary sewer easements north of Spring Brook Road, east of Alpine Road and public Right-of-Way at 923 Seminary Street in Rockford, Illinois

**Completion Date:** April 30, 2021

**Liquidated Damages:** \$300/calendar day per each completion date deadline

To: Board of Trustees  
Rock River Water Reclamation District  
3501 Kishwaukee Street  
Rockford, IL 61109

From: \_\_\_\_\_  
(Individual, Partnership or Corporation, as case may be)

\_\_\_\_\_  
(Address of Individual, Partnership or Corporation)

Gentlemen:

I (We), the undersigned, hereby propose to furnish all materials, equipment, tools, services, labor, and whatever else may be required to construct and place in service the above subject Sanitary Sewer for the Rock River Water Reclamation District all in accordance with the plans and specifications, provided by the Rock River Water Reclamation District. The undersigned also affirms and declares:

1. That I (we), have, examined and am (are) familiar with all the related contract documents and found that they are accurate and complete and are approved by the undersigned.
2. That I (we), have carefully examined the site of the work, and that, from my (our) investigation, has satisfied myself (ourselves) as to the nature and location of the work, the character, quality, and quantity of materials and the kind and extent of equipment and other facilities needed for the performance of the work, the general and local conditions and all difficulties to be encountered, and all other items which may, in any way, effect the work or its performance.
3. That this bid is made without any understanding, agreement or connection with any other person, firm, or corporation making a bid for the same purposes, and is in all respects fair and

without collusion or fraud; and that I (we) are not barred from bidding as a result of a bid-rigging or bid-rotating conviction.

4. That accompanying the Proposal is a Bidder's Bond in the amount specified in Article 1, Notice to Bidders, payable to the Board of Trustees of the Rock River Water Reclamation District, which it is agreed, shall be retained as liquidated damages by said Rock River Water Reclamation District if the undersigned fails to execute the Contract in conformity with the contract documents incorporated in the contract documents and furnish bond as specified, within ten (10) days after notification of the award of the contract to the undersigned.
5. The Bidder is of lawful age and that no other person, firm or corporation has any interest in this Proposal or in the Contract proposed to be entered into.
6. The Bidder is not in arrears to the Rock River Water Reclamation District, upon debt or contract, and is not a defaulter, as surety or otherwise, upon any obligation to the Rock River Water Reclamation District.
7. No officer or employee or person whose salary is payable in whole or in part by the District is, shall be or become interested, directly or indirectly as a contracting party, partner, stockholder, surety or otherwise, in this Proposal, or in the performance of the Contract, or in the work to which it is relates, or in any portion of the profits thereof.
8. The Bidder which I represent complies with all applicable requirements of the Americans with Disabilities Act (ADA) and the Occupational Safety and Health Act (OSHA) and that if said bidder is awarded a contract, it will complete all OSHA-required or ADA-required employee and customer training, will make available all required information, and will hold harmless and indemnify the District and the District's representatives.  
  
In regard to participation in an approved Apprenticeship program, upon request, Contractor will be required to provide written proof of participation.
9. The undersigned, as Bidder, declares that he has adopted and promulgated written sexual harassment policies in accordance with Public Act 101-0221 and will make this information available upon request.
10. The undersigned, as Bidder, declares he will comply with prevailing wages in accordance with the Illinois Department of Labor Standards. The State of Illinois requires contractors and subcontractors on public works projects (including Rock River Water Reclamation District) to submit certified payroll reports via the State's Certified Transcript of Payroll Portal found at [www2.illinois.gov/idol/Laws-Rules/CONMED/Pages/certifiedtranscriptofpayroll.aspx](http://www2.illinois.gov/idol/Laws-Rules/CONMED/Pages/certifiedtranscriptofpayroll.aspx).
11. The undersigned, as Bidder, declares he will comply with the Federal Drug Free Workplace Act.
12. The undersigned, as Bidder, declares he will comply with Public Act 83-1030 entitled "Steel Products Procurement Act".
13. The undersigned, as Bidder, declares he will comply with Public Act 96-929 (30 ILCS 570) regarding Illinois residents' employment.

14. The undersigned, as Bidder, declares he will comply with non-discrimination in employment in accordance with the Illinois Fair Employment Practices Commissions Rules & Regulations.
15. The undersigned, as Bidder, declares that he currently participates in an apprenticeship or training program that is registered with the United States Department of Labor's Bureau of Apprenticeship and Training or other acceptable State of Illinois Department of Labor monitored program.

In submitting this bid, it is understood that the right is reserved by the Rock River Water Reclamation District to reject any and all bids. It is agreed that this bid may not be withdrawn for a period of sixty (60) days from the opening thereof.

The undersigned further declares that he (they) has (have) carefully examined the following items of work and that the cost of all the work to complete this project is given in this Proposal.

Item No.	Quantity	Unit	Description	Unit Price (In Writing)	Unit Price (In Figures)	Total Price (In Figures)
1	222	VF	4' Diameter Manhole Lining			
2	26	EA	4' Diameter Manhole Invert Rehabilitation			
TOTAL BID PRICE:						
				(In Writing)		(In Figures)

**Proposed Epoxy Lining Product:** \_\_\_\_\_

The undersigned acknowledges receiving Addendum numbers \_\_\_\_\_, \_\_\_\_\_, \_\_\_\_\_, and realizes that all Addenda are considered part of the contract.

\_\_\_\_\_  
By: \_\_\_\_\_

Name: \_\_\_\_\_ Title: \_\_\_\_\_ Date: \_\_\_\_\_



# Fair Employment Practices Affidavit of Compliance

Project: 2020-2021 Manhole Lining, Capital Project No. 2113

NOTE: THE BIDDER MUST EXECUTE THIS AFFIDAVIT AND SUBMIT IT WITH ITS SIGNED BID. THE ROCK RIVER WATER RECLAMATION DISTRICT CANNOT ACCEPT ANY BID WHICH DOES NOT CONTAIN THIS AFFIDAVIT

\_\_\_\_\_, being first duly sworn, deposes and says that:  
(Name of person making affidavit)

They are: \_\_\_\_\_ of \_\_\_\_\_  
(Officer's Title) (Company Name)

that said company is and "Equal Opportunity Employer" as defined by Section 2000(e) of Chapter 21, Title 42 of the United States Code annotated and Federal Executive Orders #11375 which are incorporated herein by reference;

and that said company will comply with any and all requirements of Title 44 Admin. Code 750. APPENDIX A – Equal Opportunity Clause, Rules and Regulations, Illinois Department of Human Rights, which read as follows:

"In the event of the contractor's non-compliance with the provisions of this Equal Employment Opportunity Clause, the Illinois Human Rights Act or the Rules and Regulations of the Illinois Department of Human Rights ("Department"), the contractor may be declared ineligible for future contracts or subcontracts with the State of Illinois or any of its political subdivisions or municipal corporations, and the contract may be cancelled or voided in whole or in part, and such other sanctions or penalties may be imposed or remedies invoked as provided by statute or regulation. During the performance to this contract, the contractor agrees as follows:

1. That it will not discriminate against any employee or applicant for employment because of race, color, religion, sex, sexual orientation, marital status, national origin or ancestry, citizen status, age, physical or mental handicap unrelated to ability, sexual orientation, military status or an unfavorable discharge from military service; and further that it will examine all job classifications to determine if minority persons or women are underutilized and will take appropriate affirmative action to rectify any such underutilization.
2. That, if he or she hires additional employees in order to perform this contract or any portion of this contract, he or she will determine the availability (in accordance with the Department's Rules and Regulations) of minorities and women in the areas from which he or she may reasonably recruit and he or she will hire for each job classification for which employees are hired in a way that minorities and women are not underutilized.
3. That, in all solicitations or advertisements for employees placed by him or her or on his or her behalf, he or she will state that all applicants will be afforded equal opportunity without discrimination because of race, color, religion, sex, sexual orientation, marital status, national origin or ancestry, citizenship status, age, physical or mental handicap unrelated to ability, sexual orientation, military status or an unfavorable discharge from military service.
4. That he or she will send to each labor organization or representative of workers with which he or she has or is bound by a collective bargaining or other agreement or understanding, a notice advising such labor organization or representative of the contractor's obligations under the Illinois Human Rights Act and the Department's Rules and Regulations. If any labor organization or representative fails or refuses to cooperate with the contractor in his or her efforts to comply with such Act and Rules and Regulations, the contractor will promptly so notify the Department and the contracting agency and will recruit employees from other sources when necessary to fulfill its obligations under the contract.
5. That he or she will submit reports as required by the Department's Rules and Regulations, furnish all relevant information as may from time to time be requested by the Department or the contracting agency, and in all respects comply with the Illinois Human Rights Act and the Department's Rules and Regulations.
6. That he or she will permit access to all relevant books, records, accounts and work sites by personnel of the contracting agency and the Department for purposes of investigation to ascertain compliance with the Illinois Human Rights Act and the Department's Rules and Regulations.
7. That he or she will include verbatim or by reference the provisions of this clause in every subcontract awarded under which any portion of the contract obligations are undertaken or assumed, so that the provisions will be binding upon the subcontractor. In the same manner as with other provisions of this contract, the contractor will be liable for compliance with applicable provisions of this clause by such subcontractors; and further it will promptly notify the contracting agency and the Department in the event any subcontractor fails or refuses to comply with the provisions. In addition, the contractor will not utilize any subcontractor declared by the Illinois Human Rights Commission to be ineligible for contracts or subcontracts with the State of Illinois or any of its political subdivisions or municipal corporations.

(Source: Amended at 32 Ill. Reg. 16484, effective September 23, 2008)"

IL Dept of Human Rights Registration No.: \_\_\_\_\_

Expiration Date: \_\_\_\_\_

\_\_\_\_\_  
Signature

Subscribed and sworn to before me this \_\_\_\_\_ day of \_\_\_\_\_, 20\_\_\_\_\_.

\_\_\_\_\_  
Notary Public

## Bid Bond

KNOW ALL MEN BY THESE PRESENTS, that we:

\_\_\_\_\_ (hereinafter called the Principal) and

\_\_\_\_\_ (hereinafter called the Surety)

a Corporation chartered and existing under the laws of the State of \_\_\_\_\_ with its principal offices in the City of \_\_\_\_\_ and authorized to do business in the State of Illinois are held and firmly bound onto the Rock River Water Reclamation District of Winnebago County, Illinois (District), in the full and just sum of: TEN PERCENT (10%) OF THE TOTAL BID PRICE good lawful money of the United States of America, to be paid upon demand of the District, to which payment will and truly to be made we bind ourselves, our heirs, executors, administrators, and assigns, jointly and severally and firmly by these presents.

WHEREAS, the Principal is about to submit, or has submitted to the District, a proposal for constructing Sanitary Sewers and Appurtenances.

WHEREAS, the Principal desires to file this bond, in accordance with law, to accompany this Proposal.

NOW THEREFORE, The conditions of this obligation are such that if the Proposal be accepted, the Principal shall, within ten days after the date of receipt of a written notice of award of Contract, execute a Contract in accordance with the Proposal and upon the terms, conditions, and prices set forth therein, in the form and manner required by the District, and execute a sufficient and satisfactory Contract Performance Bond payable to said District in an amount of one hundred percent (100%) of the Contract price (including alternates) in form and with security satisfactory to said District, then this obligation to be void, otherwise to be and remain in full force and virtue in law; and the Surety shall, upon failure of the Principal to comply with any or all of the foregoing requirements within the time specified above, immediately pay to the aforesaid District, upon demand, the amount hereof in good and lawful money of the United States of America, not as a penalty, but as liquidated damages.

IN TESTIMONY THEREOF, the Principal and Surety have caused these presents to be duly signed  
and sealed this \_\_\_\_\_ day of \_\_\_\_\_, 20\_\_\_\_\_.

\_\_\_\_\_  
**Principal**

(Seal)

By \_\_\_\_\_

Name: \_\_\_\_\_

Title: \_\_\_\_\_

Date: \_\_\_\_\_

Attest:

\_\_\_\_\_  
Secretary

**Surety**

(Seal)

By \_\_\_\_\_

Name: \_\_\_\_\_

Title: \_\_\_\_\_

Date: \_\_\_\_\_

# Agreement

## 1. General

THIS AGREEMENT, made and concluded this \_\_\_\_ day of \_\_\_\_\_, 2021, between the Rock River Water Reclamation District, Rockford, Illinois (District), acting by and through the Board of Trustees, and \_\_\_\_\_, his/their executors, administrators, successors or assigns:

## 2. Scope of Work

WITNESSETH: That for and in consideration of the payments and agreements made in the Proposal attached hereto, to be made and performed by the District and according to the terms expressed in the Bond referring to these presents, the Contractor agrees with the District at his/their own proper cost and expense to do all the work, furnish all equipment, materials and all labor necessary to complete the work in accordance with the plans and specifications hereinafter described, and in full compliance with all of the terms of this agreement and the requirements of the District and its representative.

And it is also understood and agreed that the Bidding Requirements, Detailed Specifications, Contract Forms, General Conditions, General Requirements, Technical Specifications, Plans, Addenda, and provisions required by law are all essential documents of the contract, and are a part hereof, as if herein set out verbatim or as if attached, except for titles, subtitles, headings, table of contents and portions specifically excluded.

## 3. Contract Price

The District shall pay to the Contractor, and the Contractor shall accept, in full payment for the performance of this Contract, subject to any additions or deductions provided for hereby, in current funds, the Total Contract Price of \_\_\_\_\_ and 00/100 (\$ \_\_\_\_\_).

Payments are to be made to the Contractor in accordance with and subject to the provisions of Section 7 of this Agreement, which is a part of this Contract.

## 4. Bond

The Contractor has entered into and herewith tenders a bond of even date herewith, in the penal sum of \_\_\_\_\_ and 00/100 (\$ \_\_\_\_\_) to insure the faithful performance of this Contract, which said bond is hereby made a part of this Contract by reference.

## 5. Maintenance and Guarantee

The Contractor shall promptly repair, replace, restore or rebuild any imperfections that may arise and shall maintain satisfactory to the District all work for a period three years from the date of final acceptance of the Contract for trench settlement and for a period of two years all other work, except where periods of maintenance and guarantee are provided for. The Contractor shall, for this period, indemnify and save harmless the District, its officers and agents from any injury done to

property or persons as a direct or alleged result of imperfections in the Contractors' work, and shall immediately assume and take charge of the defense of such action or suits in like manner and to all intents and purposes as if said actions and suits had been brought directly against the Contractor.

If the Contractor shall fail to repair, replace, rebuild or restore such defective or damaged work promptly after receiving notice given by the District, the District shall have the right to have the work done by others and to call on the Contractor and his bondsman to pay the costs thereof.

## **6. Contract Execution**

IT IS EXPRESSLY UNDERSTOOD AND AGREED that the entire improvement shall be done in a thorough and workmanlike manner, under the direction and to the satisfaction of the District and in full compliance with all the requirements of its representative under them. All loss or damage arising out of the nature of the work to be done, or from any detention of unforeseen obstruction or difficulty which may be encountered in the prosecution of the work, or from the action of the elements, shall be sustained by the Contractor.

The Contractor will be held responsible for all accidents, and hereby agrees to indemnify and protect the District from all suits, claims, and actions brought against it, and all cost, and damages which the District may be put to by reason of an injury or alleged injury, to the person or property of another in the execution of this contract, or the performance of the work, or in guarding the same, or for any material used in its prosecution or in its construction.

Any person employed on the work who shall refuse or neglect to obey the directions of the District or its representative, or who shall be deemed by the District to be incompetent, or who shall be guilty of any disorderly conduct, or who shall commit any trespass on any public or private property in the vicinity of the work, shall at once be removed from the work by the Contractor when so requested by the District.

Any request to extend the contract completion date must be considered by the Board at the Board meeting prior to the then-existing contract termination date. Any deviation from this action will result in the liquidated damage clause in the contract to be exercised.

## **7. Payments to Contractor**

The District hereby covenants and agrees, in consideration of the covenants and agreements in this Contract, specified to be kept and performed by the Contractor and subject to the conditions herein contained, and if the District receives an acceptable invoice prior to the tenth day of the month and receives approval of the work by the District Engineering Manager, the District shall issue payment before the fifth day of the succeeding month. If the District receives an acceptable invoice on or after the tenth day of the month, the District shall issue payment before the fifth day of the second succeeding month.

The District reserves the right at all times to refuse to issue payment in case the Contractor has neglected or failed to pay any subcontractors, workmen or employee on the work.

## **8. Subcontracts**

No part of the work herein provided for shall be sublet or subcontracted without the express consent of the District, to be entered in the records, and in no case shall consent relieve the Contractor from the obligation herein entered into, or change the terms of this Agreement.

## **9. Contractor's Responsibility**

This Contract shall extend to and be binding upon the successors and assigns, and upon the heirs, administrators, executors, and legal representatives of the Contractor.

In consideration of and to induce the award of this Contract to him, the Contractor represents and warrants: that he is not in arrears to the District upon debt of the Contract and that he is not a defaulter, as surety, contractor or otherwise; that he is financially solvent and sufficiently experienced and competent to perform the work; that the work can be performed as called for by the Contract; that the facts stated in his proposal and the information given by him is true and correct in all respects, and that he is fully informed regarding all the conditions affecting the work to be done and labor and materials to be furnished for the completion of this Contract and that his information was secured by personal investigation and research.

The Contractor shall pay not less than the prevailing wage rate as determined by the Department of Labor, to all laborers, workmen and mechanics performing work under this Contract. Contractor shall comply with current revisions of the wage standards; as required by law. The Contractor shall be responsible for verifying the prevailing wages each month and notifying all subcontractors of the appropriate monthly rates. The State of Illinois requires contractors and subcontractors on District projects to submit certified payroll reports via the State's Certified Transcript of Payroll Portal currently found at: • <https://www2.illinois.gov/idol/Laws-Rules/CONMED/Pages/certifiedtranscriptofpayroll.aspx>. The Contractor is responsible for verifying current website.

In regard to nondiscrimination in employment, Contractor will be required to comply with the Illinois Fair Employment Practices Commission's Rules and Regulations as provided herein.

The Contractor shall comply with the American Disabilities Act of 1990 (ADA). The Contractor will hold harmless and indemnify the District and their representatives from all:

- (a) suits, claims, or actions;
- (b) costs, either for defense (including but not limited to reasonable attorney's fees and expert witness fees) or for settlement, and;
- (c) damages of any kind (including but not limited to actual, punitive, and compensatory damages)

relating in any way to or arising out of the ADA, to which said firm is exposed or which it incurs in the execution of the contract.

Contractor shall also comply with Public Act 101-0221, which requires any party to a contract to adopt and enforce a written policy regarding sexual harassment that includes, as a minimum, the following information:

- (a) the illegality of sexual harassment
- (b) the definition of sexual harassment under Illinois State law;
- (c) a description of sexual harassment, utilizing examples;

- (d) my (our) organization's internal complaint process including penalties;
- (e) through the Illinois Department of Human Rights and the Illinois Human Rights Commission;
- (f) directions on how to contact the Department and the Commission; and
- (g) protection against retaliation as provided by Section 6-101 of the Illinois Human Rights Act.

Upon request this information will be provided to the Illinois Department of Human Rights. Upon District award of a contract, the District will be provided this information described no more than ten working days after the District issues its award notification.

The Contractor shall comply with Article 2 of Public Act 83-1472 which provides that Illinois residents be employed on Illinois public works projects, provided there has been a period of excessive unemployment (5%) in the State of Illinois as defined in the Act; and further, that Illinois workers are available and capable of performing the particular type work involved.

The Contractor shall comply with all rules and regulations of OSHA during the execution of this Contract.

The Contractor shall comply with the Federal Drug Free Workplace Act.

The Steel Products Procurement Act, Illinois Public Act 83-1030, requires that steel products used or supplied in performance of this Contract or subcontract shall be manufactured or produced in the United States with three exceptions, as explained in the Instructions to Bidders.

The Contractor shall comply with Public Act 96-1416 regarding the disposal of CCDD and uncontaminated soil at CCDD fill sites as explained in the Instructions to Bidders.

## **10. Time**

Work under this Agreement shall commence upon issuance of the Notice to Proceed. The completion date for this Project shall be April 30, 2021.

## **11. Liquidated Damages**

The amount of liquidated damages shall be \$300.00 per calendar day.

## **12. Counterparts**

This Agreement may be executed and recorded in counterparts, each of which shall be deemed an original and all of which, when taken together, shall constitute one and the same instrument. The Parties hereby acknowledge and agree that facsimile signatures or signatures transmitted by electronic mail in so-called "pdf" format shall be legal and binding and shall have the same full force and effect as if an original of this Agreement had been delivered. Each of the parties (a) intend to be bound by the signatures on any document sent by facsimile or electronic mail, (b) are aware that the other party will rely on such signatures, and (c) hereby waive any defenses to the enforcement of the terms of this Agreement based on the foregoing forms of signature.

### 13. Seals

IN WITNESS WHEREOF, the parties have hereunto set their hands and seals, and such of them as are corporations have caused these presents to be signed by their duly authorized officers.

**Rock River Water Reclamation District  
Winnebago County, Illinois**

(Seal)

By \_\_\_\_\_  
President, Board of Trustees

ATTEST: \_\_\_\_\_  
Clerk of the Board

**Contractor**

(Corporate Seal)

By \_\_\_\_\_  
Contractor's Officer

Name: \_\_\_\_\_

Title: \_\_\_\_\_

Date: \_\_\_\_\_

ATTEST: \_\_\_\_\_



## Labor & Material Payment Bond

TO: \_\_\_\_\_ Contractor Name

\_\_\_\_\_ Contractor City, State

KNOW ALL MEN BY THESE PRESENTS

That \_\_\_\_\_ (Contractor)

as Principal, and \_\_\_\_\_

a corporation of the State of \_\_\_\_\_ as Surety, are held and firmly bound unto the Rock River Water Reclamation District, as Obligee, for the use and benefit of claimants as hereinafter defined in the amount of

\_\_\_\_\_ Dollars (\$ \_\_\_\_\_), for the payment where of Principal and Surety bind themselves, their heirs, executors, administrators, successors and assigns, jointly and severally, firmly by these presents.

WHEREAS, Principal has by written agreement dated \_\_\_\_\_ 20\_\_ Entered into a Contract with Obligee for \_\_\_\_\_ in accordance with contract documents prepared by the Rock River Water Reclamation District which Contract is by reference made a part hereof, and is hereinafter referred to as "the Contract".

**NOW, THEREFORE, THE CONDITION OF THIS OBLIGATION** is such that if Principal shall promptly pay for all laborers, workers and mechanics engaged in the work under the Contract, and not less than the general prevailing rate of hourly wages of a similar character in the locality in which the work is performed, as determined by the State of Illinois Department of Labor pursuant to the Illinois Compiled Statutes 280 ILCS 130 / 1-12 et seq. and for all material used or reasonably required for use in the performance of the Contract, then this obligation shall be void; otherwise it shall remain in full force and effect.

1. A claimant is deemed as any person, firm, or corporation having contracts with the Principal or with any of Principal's subcontractors for labor or materials furnished in the performance of the Contract on account of which this Bond is given.
2. Nothing in this Bond contained shall be taken to make the Obligee liable to any subcontractor, material man or laborer, or to any other person to any greater extent than it would have been liable prior to the enactment of The Public Construction Bond Act, approved June 20, 1931, as amended; provided further, that any person having a claim for labor and materials furnished in the performance of the Contract shall have no right of action unless he shall have filed a verified notice of such claim with the Obligee within 180 days after the date of the last item of work or the furnishing of the last item of materials, which claim shall have been verified and shall contain the name and address of the claimant, the business address of the claimant within the State of Illinois, if any, or if the claimant be a foreign corporation having no place of business within the State the principal place of business of the corporation, and in all cases of partnership the names and residences of each of the partners, the name of the Contractor

for the Obligee, the name of the person, firm or corporation by whom the claimant was employed or to whom such claimant furnished materials, the amount of the claim and a brief description of the public improvement for the construction or installation of which the contract is to be performed. No defect in the notice herein provided for shall deprive the claimant of its right of action under the terms and provisions of this Bond unless it shall affirmatively appear that such defect has prejudiced the rights of an interested party asserting the same.

3. No action shall be brought on this Bond until the expiration of 120 days after the date of the last item of work or of the furnishing of the last item of material except in cases where the final settlement between Obligee and the Contractor shall have been made prior to the expiration of the 120 day period, in which case action may be taken immediately following such final settlement; nor shall any action of any kind be brought later than 6 months after the acceptance by the Obligee of the work. Such suit shall be brought only in the circuit court of this State in the judicial district in which the Contract is to be performed.
4. Surety hereby waives notice of any changes in the Contract, including extensions of time for the performance thereof.
5. The amount of this Bond shall be reduced by and to the extent of any payment or payments made in good faith hereunder.
6. The Principal and Surety shall be liable for any attorneys' fees, engineering costs, or court costs incurred by the Obligee relative to claims made against this Bond.

Signed and Sealed this \_\_\_\_\_ day of \_\_\_\_\_, 20\_\_\_\_.

**CONTRACTOR**

**SURETY**

\_\_\_\_\_  
Contractor Firm Name

By: \_\_\_\_\_  
Signature

\_\_\_\_\_  
Printed Name

\_\_\_\_\_  
Title

By: \_\_\_\_\_  
Attorney-in-Fact Signature

\_\_\_\_\_  
Printed Name

\_\_\_\_\_  
Resident Agent

ATTEST:

\_\_\_\_\_  
Corporate Secretary (Corporations only)

## Performance Bond

**KNOW ALL MEN BY THESE PRESENTS**, that WHEREAS, the Rock River Water Reclamation District has awarded to: \_\_\_\_\_ hereinafter designated as the “Principal”, a contract, dated, \_\_\_\_\_, for the Rock River Water Reclamation District.

**WHEREAS**, said Principal is required under the terms of said Contract to furnish a bond for the faithful performance of said Contract (the “Bond”);

**NOW, THEREFORE**, we the Principal and \_\_\_\_\_, as Surety, are firmly bound unto the Rock River Water Reclamation District in the penal sum of \_\_\_\_\_ Dollars (\$ \_\_\_\_\_ ) lawful money of the United States for the payment of which sum well and truly to be made, we bind ourselves, our heirs, executors, administrators, successors and assigns, jointly and severally firmly by these presents for a performance bond. The conditions of this obligation is such that if the said Principal does well and faithfully performs all the conditions and covenants of said Contract, according to the true intent and meaning thereof, upon its part to be kept and performed, then the above obligation is to be null and void, otherwise to remain in full force and effect.

**THE CONDITION OF THIS OBLIGATION IS SUCH**, that if the above bounden Principal, its heirs, executors, administrators, successors or assigns, shall in all things stand to and abide by, and well and truly keep and perform the covenants, conditions and agreements in the said Contract, including the provisions for liquidated damages in the said Contract, any changes, additions or alterations thereof made as therein provided, on its part, to be kept and performed at the time and in the manner therein specified, and in all respects according to their true intent and meaning, and shall indemnify and save harmless the Rock River Water Reclamation District, its officers and agents, as therein stipulated, then this obligation shall become null and void; otherwise it shall be and remain in full force and effect. And the said Surety, for value received, hereby stipulates and agrees that no change, extension of time, alteration or addition to the terms of the Contract or to the work to be performed thereunder or the specifications accompanying the same and no inadvertent overpayment of progress payments shall in any way affect its obligations on this Bond, and it does hereby waive notice of any such change, extension of time, alteration or addition to the terms of the Contract or to the work or to the specifications or of any inadvertent overpayment of progress payments. The Rock River Water Reclamation District shall be named as beneficiary on this Performance Bond.

**IN WITNESS WHEREOF**, the above-bounden parties have executed this instrument under their seal this \_\_\_\_\_ day of \_\_\_\_\_, 20\_\_\_\_\_, the name and corporate seal of each corporate party being hereto affixed and these presents duly signed by its undersigned representative, pursuant to authority of its governing body.

**CONTRACTOR**

**SURETY**

\_\_\_\_\_  
Contractor Firm Name

By: \_\_\_\_\_  
Signature

\_\_\_\_\_  
Printed Name

\_\_\_\_\_  
Title

By: \_\_\_\_\_  
Attorney-in-Fact Signature

\_\_\_\_\_  
Printed Name

\_\_\_\_\_  
Resident Agent

ATTEST:

\_\_\_\_\_  
Corporate Secretary (Corporations only)

**Section III**

**Manhole Rehabilitation List and  
Location Maps**

**Manhole Lining 2020-2021  
Capital Project No. 2113  
Manhole Rehabilitation List**

**BASE BID**

Item	MH ID	Diameter (FT)	Material	Depth (FT)	Pipe Dia. (INCH)
1	118-064	4	Pre-cast Concrete	12.0	20
2	118-065	4	Pre-cast Concrete	8.0	20, 4
3	119-003	4	Pre-cast Concrete	7.7	20, 8
4	119-012	4	Pre-cast Concrete	7.4	20
5	119-013	4	Pre-cast Concrete	8.9	20, 8
6	119-023	4	Pre-cast Concrete	8.1	20, 8, 4
7	119-026A	4	Pre-cast Concrete	7.5	20, 8
8	119-030A	4	Pre-cast Concrete	7.4	20, 6
9	119-030	4	Pre-cast Concrete	7.3	20, 4
10	119-032	4	Pre-cast Concrete	8.0	20, 4
11	119-034	4	Pre-cast Concrete	7.2	20, 10, 8
* 12	120-002	4	Pre-cast Concrete	13.0	20, 8
13	120-014	4	Pre-cast Concrete	9.3	20
14	120-015	4	Pre-cast Concrete	9.9	20
15	120-016	4	Pre-cast Concrete	9.6	20, 12
* 16	120-017	4	Pre-cast Concrete	10.9	20, 8
17	120-018	4	Pre-cast Concrete	8.9	20, 8
18	120-019	4	Pre-cast Concrete	8.8	20, 8
19	120-021	4	Pre-cast Concrete	13.7	22,20, 8, 6
20	120-057A	4	Pre-cast Concrete	14.5	22, 8, 6
21	120-088	4	Pre-cast Concrete	9.8	20, 6
22	120-089	4	Pre-cast Concrete	10.6	20, 6
23	151-300	4	Pre-cast Concrete	7.1	21, 20
24	151-006	4	Pre-cast Concrete	15.2	20, 8
25	151-007	4	Pre-cast Concrete	14.9	20, 18
** 26	022-016	4	Brick	23.8	24,15

**Total Vertical Feet = 221.6**

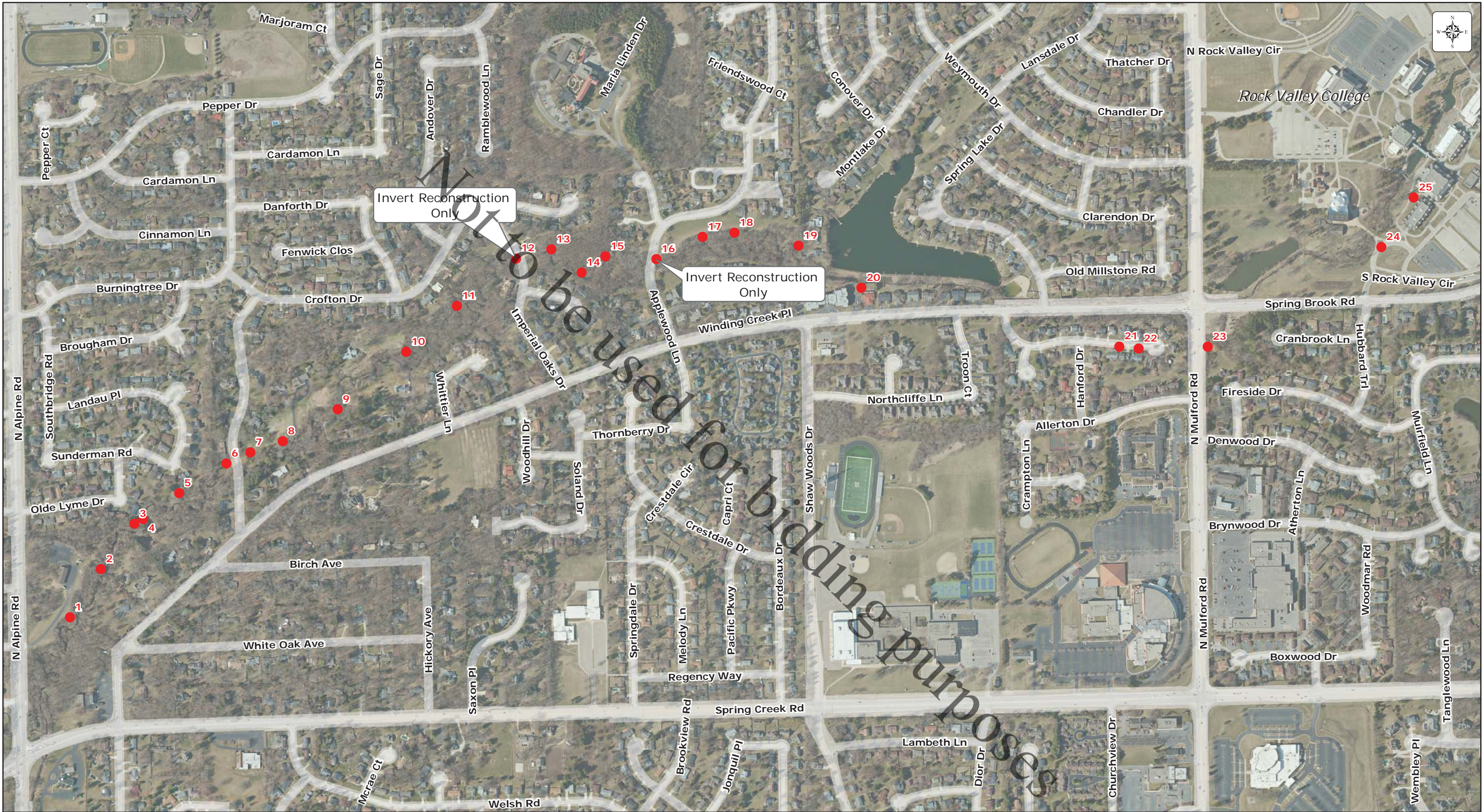
\*Vertical walls of Items 12 & 16 were lined in 2019 with 175 mil of epoxy. Only invert reconstruction and lining required. Item 12 requires removal of approximately 2' of 20" HDPE pipe on the upstream side prior to invert reconstruction (constricting flow). Depths of Items 12 & 16 are indicated, but not included in the total Vertical Feet to be lined.

\*\* The existing 24" diameter sewer has been lined with cured-in-place pipe (CIPP) through the manhole. The manhole bench has significant infiltration that will require pressure grouting. Lining of MH 022-016 invert may terminate at existing CIPP liner at the top of the bench.

**General Notes**



1. All 20" Diameter pipe is SDR 17 HDPE installed via pipe bursting which damaged the existing manhole inverts.
2. Each manhole shall be lined full depth and each invert shall be rehabilitated per specifications.



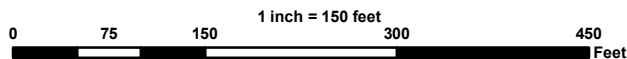






-  MH To Be Lined
-  Approximate Easement Location

## Manhole Lining 2020-2021



By: J. Kink  
Produced: 12/10/2020  
RRWRD Engineering Department













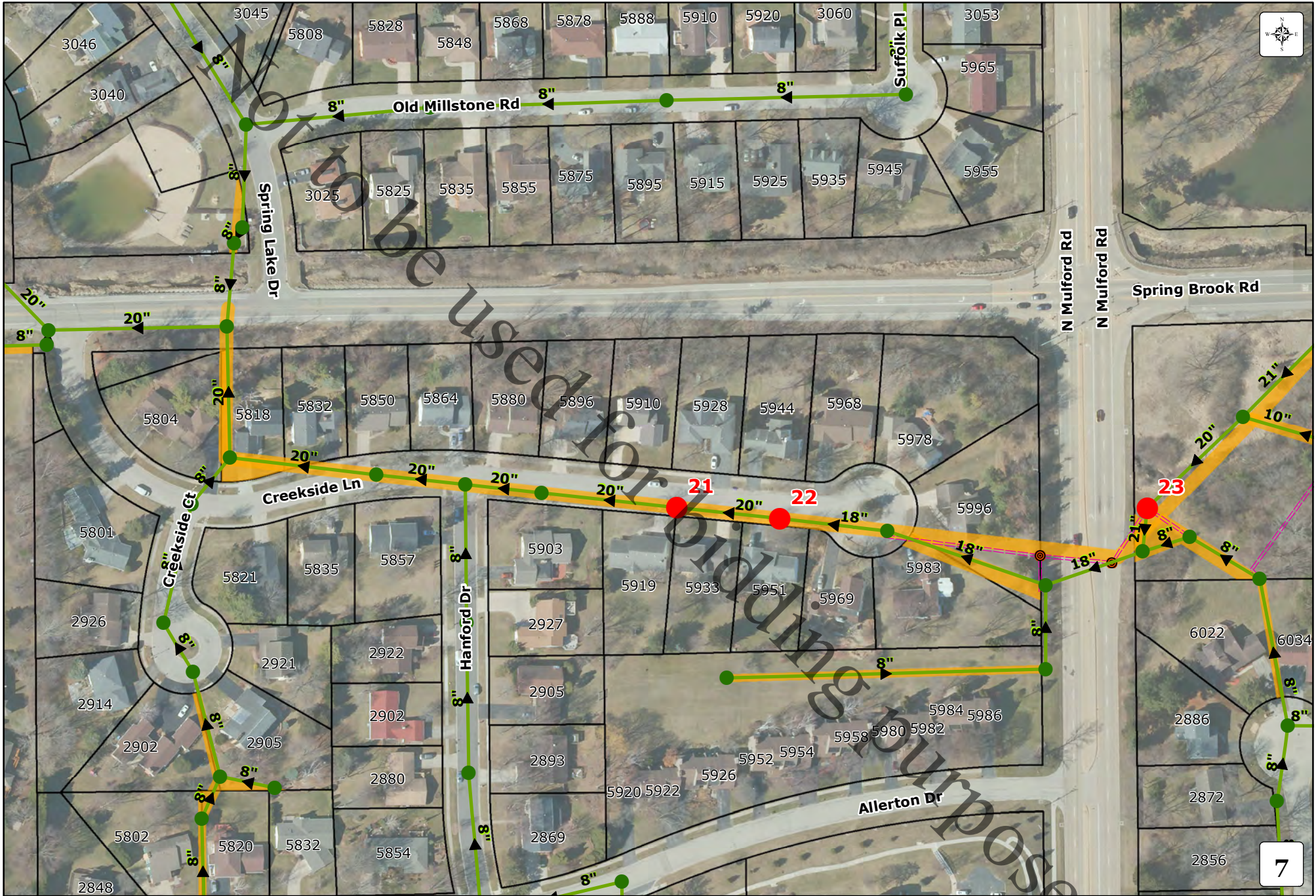






















**Section IV**

**Manhole Inspection Reports**

# ROCK RIVER WATER RECLAMATION DISTRICT

## Manhole Inspection Form

Manhole ID: 118-064 Inspector: W. STAHL Date: 6/19/2019  
 Address/Location: 2675 N ALPINE RD  
 Surface Cover: Asphalt ☐ Concrete ☐ Turf ☒ Gravel ☐ Other ☐ Ponding: Yes ☐ No ☒

Lid / Cover:	Open Grate <input type="checkbox"/>	Sanitary Stamp <input checked="" type="checkbox"/>	Bolt-down <input checked="" type="checkbox"/>	Frame:	Cast Iron <input checked="" type="checkbox"/>	Good <input checked="" type="checkbox"/>
	Concealed Pickhole <input checked="" type="checkbox"/>	No Stamp <input type="checkbox"/>	Gasket <input type="checkbox"/>		Other <input type="checkbox"/>	Fair <input type="checkbox"/>
	Open Pickhole <input type="checkbox"/>	Other <input type="checkbox"/>	Low Profile <input type="checkbox"/>			Poor <input type="checkbox"/>

Adj. Rings: Qty Size	Precast <input type="checkbox"/>	Good <input type="checkbox"/>	Cone:	Precast <input checked="" type="checkbox"/>	Good <input checked="" type="checkbox"/>	Wall / Base:	Precast <input checked="" type="checkbox"/>	Good <input type="checkbox"/>
	Brick <input type="checkbox"/>	Fair <input type="checkbox"/>		Brick <input type="checkbox"/>	Fair <input type="checkbox"/>		Brick <input type="checkbox"/>	Fair <input type="checkbox"/>
	Block <input type="checkbox"/>	Poor <input type="checkbox"/>		Block <input type="checkbox"/>	Poor <input type="checkbox"/>		Block <input type="checkbox"/>	Poor <input checked="" type="checkbox"/>
	Other <input type="checkbox"/>			Flat Top <input type="checkbox"/>			Other <input type="checkbox"/>	
	None <input checked="" type="checkbox"/>			Other <input type="checkbox"/>			Coating <input type="checkbox"/>	

Bench:	Conc. <input checked="" type="checkbox"/>	Flat <input type="checkbox"/>	Steps:	Cast Iron <input type="checkbox"/>	Good <input checked="" type="checkbox"/>	Infiltr:	Low	Med	Heavy	None	
	Block <input type="checkbox"/>	Half <input checked="" type="checkbox"/>		Plastic <input checked="" type="checkbox"/>	Fair <input type="checkbox"/>		Adj.	<input type="checkbox"/>	<input type="checkbox"/>	<input type="checkbox"/>	<input checked="" type="checkbox"/>
	Brick <input type="checkbox"/>	3/4 <input type="checkbox"/>		None <input type="checkbox"/>	Poor <input type="checkbox"/>		Cone	<input type="checkbox"/>	<input type="checkbox"/>	<input type="checkbox"/>	<input checked="" type="checkbox"/>
	Other <input type="checkbox"/>			1 <sup>st</sup> < 30" from Rim Yes <input checked="" type="checkbox"/> No <input type="checkbox"/>	Wall		<input type="checkbox"/>	<input type="checkbox"/>	<input type="checkbox"/>	<input checked="" type="checkbox"/>	
	None <input type="checkbox"/>			Last < 24" from Bench Yes <input checked="" type="checkbox"/> No <input type="checkbox"/>	Bench		<input type="checkbox"/>	<input checked="" type="checkbox"/>	<input type="checkbox"/>	<input type="checkbox"/>	

GPS Rim Elev: \_\_\_\_\_ MH Diameter: 4' Surcharge: Yes ☐ No ☐

In MH 1 (Upstrm)	<u>118-065</u>	Depth High: <u>11.85</u>	Elev: _____	Depth Low: _____	Elev: _____
In MH 2 (Upstrm)	_____	Depth High: _____	Elev: _____	Depth Low: _____	Elev: _____
In MH 3 (Upstrm)	_____	Depth High: _____	Elev: _____	Depth Low: _____	Elev: _____

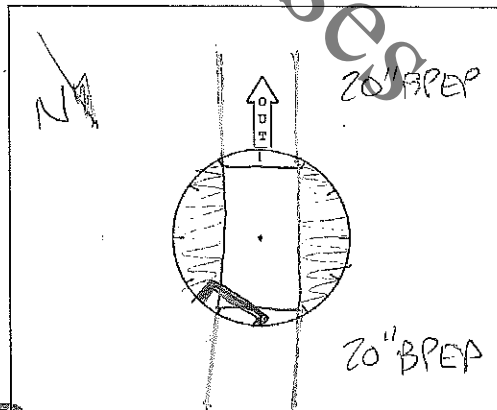
Serv 1 Clock Pos: _____	Address: _____	Depth High: _____	Elev: _____	Depth Low: _____	Elev: _____
Serv 2 Clock Pos: _____	Address: _____	Depth High: _____	Elev: _____	Depth Low: _____	Elev: _____
Serv 3 Clock Pos: _____	Address: _____	Depth High: _____	Elev: _____	Depth Low: _____	Elev: _____

Out is considered 12:00 and service clock position shall be given from 12:00.

Out MH 1 (Dwnstrm)	<u>118-086</u>	Depth: <u>12.00</u>	Elev: _____
Out MH 2 (Dwnstrm)	_____	Depth: _____	Elev: _____

Metered <input type="checkbox"/>	Outside Drop <input type="checkbox"/>	Inside Drop <input type="checkbox"/>
----------------------------------	---------------------------------------	--------------------------------------

Comments: MAKING BOYS. BASE SECTION HAS  
CRACKS & INFIL. AROUND PIPE IN & OUT,  
LARGE AMOUNT OF MINERAL DEPOSITS.



# ROCK RIVER WATER RECLAMATION DISTRICT

## Manhole Inspection Form

Manhole ID: 118-065 Inspector: W. STAHZ Date: 06/19/19

Address/Location: \_\_\_\_\_

Surface Cover: Asphalt ☐ Concrete ☐ Turf ☒ Gravel ☐ Other ☐ Ponding: Yes ☐ No ☐

Lid / Cover:	Open Grate <input type="checkbox"/>	Sanitary Stamp <input checked="" type="checkbox"/>	Bolt-down <input checked="" type="checkbox"/>	Frame:	Cast Iron <input checked="" type="checkbox"/>	Good <input checked="" type="checkbox"/>
	Concealed Pickhole <input checked="" type="checkbox"/>	No Stamp <input type="checkbox"/>	Gasket <input type="checkbox"/>		Other <input type="checkbox"/>	Fair <input type="checkbox"/>
	Open Pickhole <input type="checkbox"/>	Other <input type="checkbox"/>	Low Profile <input type="checkbox"/>			Poor <input type="checkbox"/>

Adj. Rings: Qty   Size 1   2"	Precast <input checked="" type="checkbox"/>	Good <input type="checkbox"/>	Cone:	Precast <input checked="" type="checkbox"/>	Good <input type="checkbox"/>	Wall / Base:	Precast <input checked="" type="checkbox"/>	Good <input type="checkbox"/>
	Brick <input type="checkbox"/>	Fair <input checked="" type="checkbox"/>		Brick <input type="checkbox"/>	Fair <input checked="" type="checkbox"/>		Brick <input type="checkbox"/>	Fair <input type="checkbox"/>
	Block <input type="checkbox"/>	Poor <input type="checkbox"/>		Block <input type="checkbox"/>	Poor <input type="checkbox"/>		Block <input type="checkbox"/>	Poor <input checked="" type="checkbox"/>
	Other <input type="checkbox"/>			Flat Top <input type="checkbox"/>			Other <input type="checkbox"/>	
	None <input type="checkbox"/>			Other <input type="checkbox"/>			Coating <input type="checkbox"/>	

Bench:	Conc. <input checked="" type="checkbox"/>	Flat <input type="checkbox"/>	Steps:	Cast Iron <input checked="" type="checkbox"/>	Good <input type="checkbox"/>	Infiltr:	Low	Med	Heavy	None	
	Block <input type="checkbox"/>	Half <input checked="" type="checkbox"/>		Plastic <input type="checkbox"/>	Fair <input checked="" type="checkbox"/>		Adj.	<input type="checkbox"/>	<input type="checkbox"/>	<input type="checkbox"/>	<input checked="" type="checkbox"/>
	Brick <input type="checkbox"/>	3/4 <input type="checkbox"/>		None <input type="checkbox"/>	Poor <input type="checkbox"/>		Cone	<input type="checkbox"/>	<input type="checkbox"/>	<input type="checkbox"/>	<input checked="" type="checkbox"/>
	Other <input type="checkbox"/>			1 <sup>st</sup> < 30" from Rim Yes <input checked="" type="checkbox"/> No <input type="checkbox"/>	Wall		<input type="checkbox"/>	<input type="checkbox"/>	<input type="checkbox"/>	<input checked="" type="checkbox"/>	
	None <input type="checkbox"/>			Last < 24" from Bench Yes <input checked="" type="checkbox"/> No <input type="checkbox"/>	Bench		<input type="checkbox"/>	<input checked="" type="checkbox"/>	<input type="checkbox"/>	<input type="checkbox"/>	

GPS Rim Elev: \_\_\_\_\_ MH Diameter: 4' Surcharge: Yes ☐ No ☒

In MH 1 (Upstrm) 119-002 Depth High: 7.87 Elev: \_\_\_\_\_ Depth Low: \_\_\_\_\_ Elev: \_\_\_\_\_  
 In MH 2 (Upstrm) \_\_\_\_\_ Depth High: \_\_\_\_\_ Elev: \_\_\_\_\_ Depth Low: \_\_\_\_\_ Elev: \_\_\_\_\_  
 In MH 3 (Upstrm) \_\_\_\_\_ Depth High: \_\_\_\_\_ Elev: \_\_\_\_\_ Depth Low: \_\_\_\_\_ Elev: \_\_\_\_\_

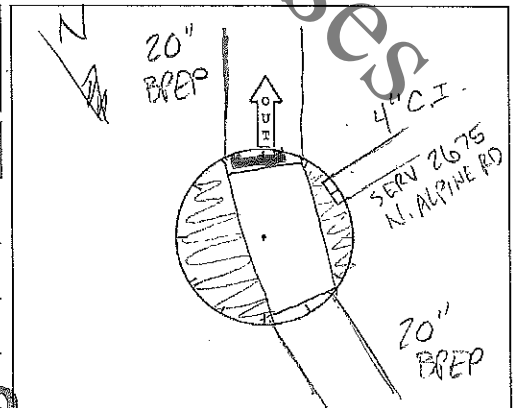
Serv 1 Clock Pos: 2:00 Address: 2675 N. ALPINE RD  
 Depth High: 6.78 Elev: \_\_\_\_\_ Depth Low: \_\_\_\_\_ Elev: \_\_\_\_\_  
 Serv 2 Clock Pos: \_\_\_\_\_ Address: \_\_\_\_\_  
 Depth High: \_\_\_\_\_ Elev: \_\_\_\_\_ Depth Low: \_\_\_\_\_ Elev: \_\_\_\_\_  
 Serv 3 Clock Pos: \_\_\_\_\_ Address: \_\_\_\_\_  
 Depth High: \_\_\_\_\_ Elev: \_\_\_\_\_ Depth Low: \_\_\_\_\_ Elev: \_\_\_\_\_

Out is considered 12:00 and service clock position shall be given from 12:00.

Out MH 1 (Dwnstrm) 118-064 Depth: 7.97 Elev: \_\_\_\_\_  
 Out MH 2 (Dwnstrm) \_\_\_\_\_ Depth: \_\_\_\_\_ Elev: \_\_\_\_\_

Metered ☐ Outside Drop ☐ Inside Drop ☐

Comments: MISSING BOLTS, BASE SECTION HAS MULTIPLE CRACKS AND LARGE AMOUNT OF MINERAL BUILD UP FROM INFIL.



# ROCK RIVER WATER RECLAMATION DISTRICT

## Manhole Inspection Form

Manhole ID: 119-003 Inspector: W. STANZ Date: 6/19/2019  
 Address/Location: 4635 OLDE LYME DR  
 Surface Cover: Asphalt ☐ Concrete ☐ Turf ☒ Gravel ☐ Other ☐ Ponding: Yes ☐ No ☒

Lid / Cover: Open Grate ☐ Sanitary Stamp ☒ Bolt-down ☒  
 Concealed Pickhole ☒ No Stamp ☐ Gasket ☐  
 Open Pickhole ☐ Other ☐ Low Profile ☐  
 Frame: Cast Iron ☒ Good ☒  
 Other ☐ Fair ☐  
 Poor ☐

Adj. Rings: Precast ☐ Good ☐  
 Brick ☐ Fair ☐  
 Qty Size Block ☐ Poor ☐  
 Other ☐  
 None ☒  
 Cone: Precast ☒ Good ☐  
 Brick ☐ Fair ☒  
 Block ☐ Poor ☐  
 Flat Top ☐  
 Other ☐  
 Wall / Base: Precast ☒ Good ☐  
 Brick ☐ Fair ☐  
 Block ☐ Poor ☒  
 Other ☐  
 Coating ☐

Bench: Conc. ☒ Flat ☐  
 Block ☐ Half ☒  
 Brick ☐ 3/4 ☐  
 Other ☐  
 None ☐  
 Steps: Cast Iron ☒ Good ☐  
 Plastic ☐ Fair ☒  
 None ☐ Poor ☐  
 1<sup>st</sup> < 30" from Rim Yes ☒ No ☐  
 Last < 24" from Bench Yes ☒ No ☐  
 Infiltr: Low Med Heavy None  
 Adj. ☐ ☐ ☐ ☒  
 Cone ☐ ☐ ☐ ☒  
 Wall ☐ ☐ ☐ ☒  
 Bench ☒ ☐ ☐ ☐

GPS Rim Elev: \_\_\_\_\_ MH Diameter: 4' Surchage: Yes ☐ No ☒

In MH 1 (Upstrm) 119-004 Depth High: 6.95 Elev: \_\_\_\_\_ Depth Low: \_\_\_\_\_ Elev: \_\_\_\_\_  
 In MH 2 (Upstrm) 119-012 Depth High: 7.65 Elev: \_\_\_\_\_ Depth Low: \_\_\_\_\_ Elev: \_\_\_\_\_  
 In MH 3 (Upstrm) \_\_\_\_\_ Depth High: \_\_\_\_\_ Elev: \_\_\_\_\_ Depth Low: \_\_\_\_\_ Elev: \_\_\_\_\_

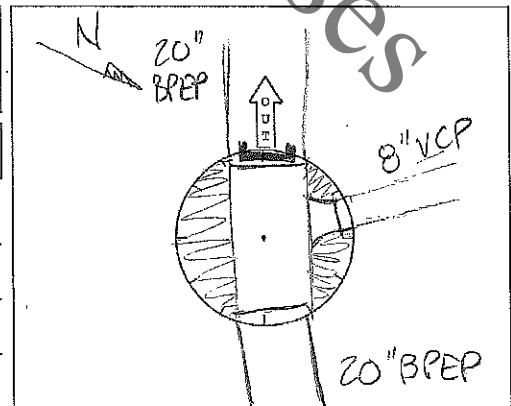
Serv 1 Clock Pos: \_\_\_\_\_ Address: \_\_\_\_\_  
 Depth High: \_\_\_\_\_ Elev: \_\_\_\_\_ Depth Low: \_\_\_\_\_ Elev: \_\_\_\_\_  
 Serv 2 Clock Pos: \_\_\_\_\_ Address: \_\_\_\_\_  
 Depth High: \_\_\_\_\_ Elev: \_\_\_\_\_ Depth Low: \_\_\_\_\_ Elev: \_\_\_\_\_  
 Serv 3 Clock Pos: \_\_\_\_\_ Address: \_\_\_\_\_  
 Depth High: \_\_\_\_\_ Elev: \_\_\_\_\_ Depth Low: \_\_\_\_\_ Elev: \_\_\_\_\_

Out is considered 12:00 and service clock position shall be given from 12:00.

Out MH 1 (Dwnstrm) 119-002 Depth: 7.72 Elev: \_\_\_\_\_  
 Out MH 2 (Dwnstrm) \_\_\_\_\_ Depth: \_\_\_\_\_ Elev: \_\_\_\_\_

Metered ☐ Outside Drop ☐ Inside Drop ☐

Comments: NOT IN GOOD SHAPE, SOME CRACKS  
IN BASE NEAR IN & OUT PIPES



SCANNED  
 ENVI JUL 09 2019

# ROCK RIVER WATER RECLAMATION DISTRICT

## Manhole Inspection Form

Manhole ID: 119-012 Inspector: W. STAHL Date: 6/19/2019  
 Address/Location: 4651 OLDE LYME DR  
 Surface Cover: Asphalt ☐ Concrete ☐ Turf ☒ Gravel ☐ Other ☐ Ponding: Yes ☐ No ☒

Lid / Cover: Open Grate ☐ Sanitary Stamp ☒ Bolt-down ☒  
 Concealed Pickhole ☒ No Stamp ☐ Gasket ☐  
 Open Pickhole ☐ Other ☐ Low Profile ☐  
 Frame: Cast Iron ☒ Good ☒  
 Other ☐ Fair ☐  
 Poor ☐

Adj. Rings: Precast ☒ Good ☐  
 Brick ☐ Fair ☒  
 Block ☐ Poor ☐  
 Other ☐  
 None ☐  
 Qty: 1 Size: 2"  
4"  
 Cone: Precast ☒ Good ☐  
 Brick ☐ Fair ☒  
 Block ☐ Poor ☐  
 Flat Top ☐  
 Other ☐  
 Wall / Base: Precast ☒ Good ☐  
 Brick ☐ Fair ☐  
 Block ☐ Poor ☒  
 Other ☐  
 Coating ☐

Bench: Conc. ☒ Flat ☐  
 Block ☐ Half ☒  
 Brick ☐ 3/4 ☐  
 Other ☐  
 None ☐  
 Steps: Cast Iron ☒ Good ☐  
 Plastic ☐ Fair ☐  
 None ☐ Poor ☒  
 1st < 30" from Rim Yes ☒ No ☐  
 Last < 24" from Bench Yes ☒ No ☐  
 Infiltr: Low Med Heavy None  
 Adj. ☐ ☐ ☐ ☒  
 Cone ☐ ☐ ☐ ☒  
 Wall ☒ ☐ ☐ ☐  
 Bench ☒ ☐ ☐ ☐

GPS Rim Elev: \_\_\_\_\_ MH Diameter: 4' Surcharge: Yes ☐ No ☒

In MH 1 (Upstrm) 119-013 Depth High: 7.27 Elev: \_\_\_\_\_ Depth Low: \_\_\_\_\_ Elev: \_\_\_\_\_  
 In MH 2 (Upstrm) \_\_\_\_\_ Depth High: \_\_\_\_\_ Elev: \_\_\_\_\_ Depth Low: \_\_\_\_\_ Elev: \_\_\_\_\_  
 In MH 3 (Upstrm) \_\_\_\_\_ Depth High: \_\_\_\_\_ Elev: \_\_\_\_\_ Depth Low: \_\_\_\_\_ Elev: \_\_\_\_\_

Serv 1 Clock Pos: \_\_\_\_\_ Address: \_\_\_\_\_  
 Depth High: \_\_\_\_\_ Elev: \_\_\_\_\_ Depth Low: \_\_\_\_\_ Elev: \_\_\_\_\_  
 Serv 2 Clock Pos: \_\_\_\_\_ Address: \_\_\_\_\_  
 Depth High: \_\_\_\_\_ Elev: \_\_\_\_\_ Depth Low: \_\_\_\_\_ Elev: \_\_\_\_\_  
 Serv 3 Clock Pos: \_\_\_\_\_ Address: \_\_\_\_\_  
 Depth High: \_\_\_\_\_ Elev: \_\_\_\_\_ Depth Low: \_\_\_\_\_ Elev: \_\_\_\_\_

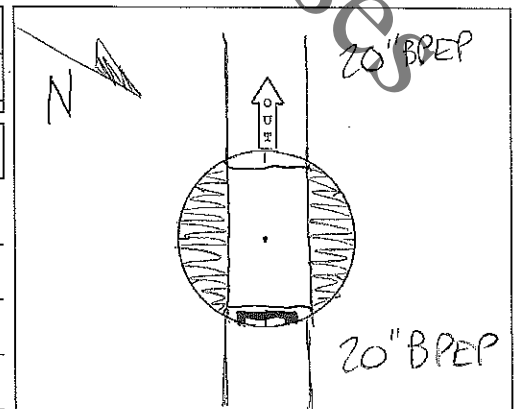
Out is considered 12:00 and service clock position shall be given from 12:00.

Out MH 1 (Dwnstrm) 119-003 Depth: 7.37 Elev: \_\_\_\_\_  
 Out MH 2 (Dwnstrm) \_\_\_\_\_ Depth: \_\_\_\_\_ Elev: \_\_\_\_\_

Metered ☐ Outside Drop ☐ Inside Drop ☐

Comments: BASE SECTION IN BAD SHAPE,  
SIGNIFICANT CRACKING NEAR IN & OUT  
PIPES.

SCANNED



# ROCK RIVER WATER RECLAMATION DISTRICT

## Manhole Inspection Form

Manhole ID: 119-013 Inspector: W. STAHL Date: 6/19/19

Address/Location: 4687 SUNDERMAN RD

Surface Cover: Asphalt ☐ Concrete ☐ Turf ☒ Gravel ☐ Other ☐ Ponding: Yes ☐ No ☒

Lid / Cover:	Open Grate <input type="checkbox"/>	Sanitary Stamp <input checked="" type="checkbox"/>	Bolt-down <input type="checkbox"/>	Frame:	Cast Iron <input checked="" type="checkbox"/>	Good <input type="checkbox"/>
	Concealed Pickhole <input checked="" type="checkbox"/>	No Stamp <input type="checkbox"/>	Gasket <input type="checkbox"/>		Other <input type="checkbox"/>	Fair <input checked="" type="checkbox"/>
	Open Pickhole <input type="checkbox"/>	Other <input type="checkbox"/>	Low Profile <input type="checkbox"/>			Poor <input type="checkbox"/>

Adj. Rings:	Precast <input checked="" type="checkbox"/>	Good <input checked="" type="checkbox"/>	Cone:	Precast <input checked="" type="checkbox"/>	Good <input type="checkbox"/>	Wall / Base:	Precast <input checked="" type="checkbox"/>	Good <input type="checkbox"/>
	Brick <input checked="" type="checkbox"/>	Fair <input checked="" type="checkbox"/>		Brick <input type="checkbox"/>	Fair <input checked="" type="checkbox"/>		Brick <input type="checkbox"/>	Fair <input type="checkbox"/>
	Block <input type="checkbox"/>	Poor <input type="checkbox"/>		Block <input type="checkbox"/>	Poor <input type="checkbox"/>		Block <input type="checkbox"/>	Poor <input checked="" type="checkbox"/>
	Other <input type="checkbox"/>			Flat Top <input type="checkbox"/>			Other <input type="checkbox"/>	
	None <input type="checkbox"/>			Other <input type="checkbox"/>			Coating <input type="checkbox"/>	

Bench:	Conc. <input checked="" type="checkbox"/>	Flat <input type="checkbox"/>	Steps:	Cast Iron <input checked="" type="checkbox"/>	Good <input type="checkbox"/>	Infiltr:	Low	Med	Heavy	None	
	Block <input type="checkbox"/>	Half <input checked="" type="checkbox"/>		Plastic <input type="checkbox"/>	Fair <input checked="" type="checkbox"/>		Adj.	<input type="checkbox"/>	<input type="checkbox"/>	<input type="checkbox"/>	<input checked="" type="checkbox"/>
	Brick <input type="checkbox"/>	3/4 <input type="checkbox"/>		None <input type="checkbox"/>	Poor <input type="checkbox"/>		Cone	<input type="checkbox"/>	<input type="checkbox"/>	<input type="checkbox"/>	<input checked="" type="checkbox"/>
	Other <input type="checkbox"/>			1 <sup>st</sup> < 30" from Rim Yes <input type="checkbox"/> No <input checked="" type="checkbox"/>	Wall		<input type="checkbox"/>	<input type="checkbox"/>	<input type="checkbox"/>	<input checked="" type="checkbox"/>	
	None <input type="checkbox"/>			Last < 24" from Bench Yes <input checked="" type="checkbox"/> No <input type="checkbox"/>	Bench		<input checked="" type="checkbox"/>	<input type="checkbox"/>	<input type="checkbox"/>	<input type="checkbox"/>	

GPS Rim Elev: \_\_\_\_\_ MH Diameter: 4' Surchage: Yes ☐ No ☒

In MH 1 (Upstrm)	<u>119-014</u>	Depth High:	<u>7.65</u>	Elev:	_____	Depth Low:	_____	Elev:	_____
In MH 2 (Upstrm)	<u>119-024</u>	Depth High:	<u>8.80</u>	Elev:	_____	Depth Low:	_____	Elev:	_____
In MH 3 (Upstrm)	_____	Depth High:	_____	Elev:	_____	Depth Low:	_____	Elev:	_____

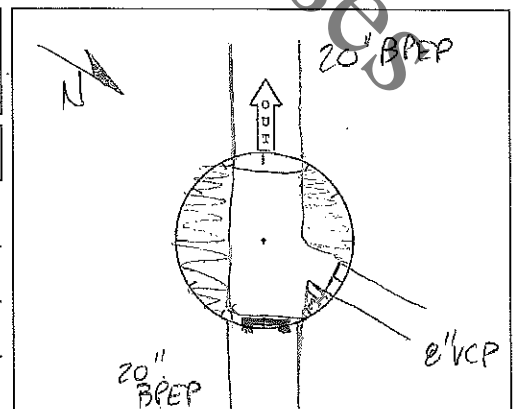
Serv 1 Clock Pos:	_____	Address:	_____
Depth High:	_____	Elev:	_____
Depth Low:	_____	Elev:	_____
Serv 2 Clock Pos:	_____	Address:	_____
Depth High:	_____	Elev:	_____
Depth Low:	_____	Elev:	_____
Serv 3 Clock Pos:	_____	Address:	_____
Depth High:	_____	Elev:	_____
Depth Low:	_____	Elev:	_____

Out is considered 12:00 and service clock position shall be given from 12:00.

Out MH 1 (Dwnstrm)	<u>119-012</u>	Depth:	<u>8.93</u>	Elev:	_____
Out MH 2 (Dwnstrm)	_____	Depth:	_____	Elev:	_____

Metered <input type="checkbox"/>	Outside Drop <input type="checkbox"/>	Inside Drop <input type="checkbox"/>
----------------------------------	---------------------------------------	--------------------------------------

Comments: SEVERAL CRACKS IN BASE NEAR ALL PIPES NOT IN GOOD SHAPE.



SCANNED  
FILED JUL 19 2019

# ROCK RIVER WATER RECLAMATION DISTRICT

## Manhole Inspection Form

Manhole ID: 119-023 Inspector: W. STAHL Date: 06/20/19  
 Address/Location: 2862 CHEROAKWOOD LN  
 Surface Cover: Asphalt ☐ Concrete ☐ Turf ☒ Gravel ☐ Other ☐ Ponding: Yes ☐ No ☒

Lid / Cover: Open Grate ☐ Sanitary Stamp ☒ Bolt-down ☒  
 Concealed Pickhole ☒ No Stamp ☐ Gasket ☐  
 Open Pickhole ☐ Other ☐ Low Profile ☐  
 Frame: Cast Iron ☒ Good ☒  
 Other ☐ Fair ☐  
 Poor ☐

Adj. Rings: Precast ☒ Good ☒  
 Brick ☐ Fair ☐  
 Block ☐ Poor ☐  
 Other ☐  
 None ☐  
 Qty 2 Size 6"  
 Cone: Precast ☒ Good ☒  
 Brick ☐ Fair ☐  
 Block ☐ Poor ☐  
 Flat Top ☐  
 Other ☐  
 Wall / Base: Precast ☒ Good ☐  
 Brick ☐ Fair ☐  
 Block ☐ Poor ☒  
 Other ☐  
 Coating ☐

Bench: Conc. ☒ Flat ☐  
 Block ☐ Half ☒  
 Brick ☐ 3/4 ☐  
 Other ☐  
 None ☐  
 Steps: Cast Iron ☒ Good ☐  
 Plastic ☐ Fair ☒  
 None ☐ Poor ☐  
 1<sup>st</sup> < 30" from Rim Yes ☒ No ☐  
 Last < 24" from Bench Yes ☒ No ☐  
 Infiltr: Low Med Heavy None  
 Adj. ☐ ☐ ☐ ☒  
 Cone ☐ ☐ ☐ ☒  
 Wall ☐ ☒ ☐ ☐  
 Bench ☐ ☒ ☐ ☐

GPS Rim Elev: \_\_\_\_\_ MH Diameter: 4' Surcharge: Yes ☐ No ☒

In MH 1 (Upstrm) 119-020A (E) Depth High: 7.60 Elev: \_\_\_\_\_ Depth Low: \_\_\_\_\_ Elev: \_\_\_\_\_  
 In MH 2 (Upstrm) 119-025 (SE) Depth High: 7.60 Elev: \_\_\_\_\_ Depth Low: \_\_\_\_\_ Elev: \_\_\_\_\_  
 In MH 3 (Upstrm) \_\_\_\_\_ Depth High: \_\_\_\_\_ Elev: \_\_\_\_\_ Depth Low: \_\_\_\_\_ Elev: \_\_\_\_\_

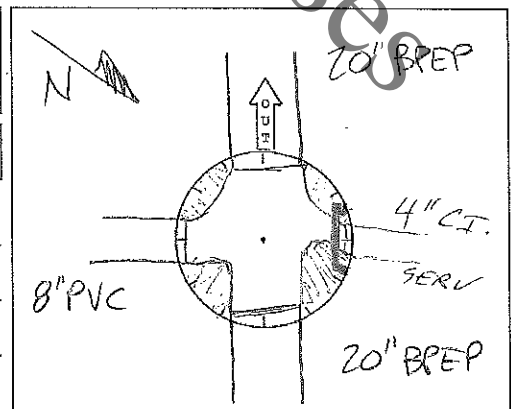
Serv 1 Clock Pos: 3:00 Address: 2862 CHEROAKWOOD LN  
 Depth High: 7.33 Elev: \_\_\_\_\_ Depth Low: \_\_\_\_\_ Elev: \_\_\_\_\_  
 Serv 2 Clock Pos: \_\_\_\_\_ Address: \_\_\_\_\_  
 Depth High: \_\_\_\_\_ Elev: \_\_\_\_\_ Depth Low: \_\_\_\_\_ Elev: \_\_\_\_\_  
 Serv 3 Clock Pos: \_\_\_\_\_ Address: \_\_\_\_\_  
 Depth High: \_\_\_\_\_ Elev: \_\_\_\_\_ Depth Low: \_\_\_\_\_ Elev: \_\_\_\_\_

Out is considered 12:00 and service clock position shall be given from 12:00.

Out MH 1 (Dwnstrm) 119-024 Depth: 8.05 Elev: \_\_\_\_\_  
 Out MH 2 (Dwnstrm) \_\_\_\_\_ Depth: \_\_\_\_\_ Elev: \_\_\_\_\_

Metered ☐ Outside Drop ☐ Inside Drop ☐

Comments: \_\_\_\_\_



# ROCK RIVER WATER RECLAMATION DISTRICT

## Manhole Inspection Form

<b>Manhole ID:</b> 119-026A	<b>Inspector:</b> W. STAHL	<b>Date:</b> 6/20/2019
<b>Address/Location:</b> 2873 CHEROKEEWOOD LN		
<b>Surface Cover:</b> Asphalt <input type="checkbox"/> Concrete <input type="checkbox"/> Turf <input checked="" type="checkbox"/> Gravel <input type="checkbox"/> Other <input type="checkbox"/> <b>Ponding:</b> Yes <input type="checkbox"/> No <input checked="" type="checkbox"/>		

<b>Lid / Cover:</b>	Open Grate <input type="checkbox"/>	Sanitary Stamp <input type="checkbox"/>	Bolt-down <input checked="" type="checkbox"/>	
	Concealed Pickhole <input checked="" type="checkbox"/>	No Stamp <input type="checkbox"/>	Gasket <input type="checkbox"/>	<b>Frame:</b> Cast Iron <input checked="" type="checkbox"/> Good <input type="checkbox"/> Other <input type="checkbox"/> Fair <input checked="" type="checkbox"/> Poor <input type="checkbox"/>
	Open Pickhole <input type="checkbox"/>	SDR Other <input checked="" type="checkbox"/>	Low Profile <input type="checkbox"/>	

<b>Adj. Rings:</b>	Precast <input type="checkbox"/>	Good <input type="checkbox"/>			
	Brick <input type="checkbox"/>	Fair <input type="checkbox"/>		Precast <input checked="" type="checkbox"/>	Good <input type="checkbox"/>
<b>Qty</b> <b>Size</b>	Block <input type="checkbox"/>	Poor <input type="checkbox"/>	<b>Cone:</b>	Brick <input type="checkbox"/>	Fair <input checked="" type="checkbox"/>
	Other <input type="checkbox"/>			Block <input type="checkbox"/>	Poor <input type="checkbox"/>
	None <input checked="" type="checkbox"/>			Flat Top <input type="checkbox"/>	
				Other <input type="checkbox"/>	
				<b>Wall / Base:</b>	Precast <input checked="" type="checkbox"/> Good <input type="checkbox"/> Brick <input type="checkbox"/> Fair <input type="checkbox"/> Block <input type="checkbox"/> Poor <input checked="" type="checkbox"/> Other <input type="checkbox"/> Coating <input type="checkbox"/>

<b>Bench:</b>	Conc. <input checked="" type="checkbox"/>	Flat <input type="checkbox"/>			
	Block <input type="checkbox"/>	Half <input checked="" type="checkbox"/>		Cast Iron <input checked="" type="checkbox"/>	Good <input type="checkbox"/>
	Brick <input type="checkbox"/>	3/4 <input type="checkbox"/>		Plastic <input type="checkbox"/>	Fair <input checked="" type="checkbox"/>
	Other <input type="checkbox"/>			None <input type="checkbox"/>	Poor <input type="checkbox"/>
	None <input type="checkbox"/>				
			<b>Steps:</b>		
			1 <sup>st</sup> < 30" from Rim	Yes <input checked="" type="checkbox"/> No <input type="checkbox"/>	
			Last < 24" from Bench	Yes <input checked="" type="checkbox"/> No <input type="checkbox"/>	
					<b>Infiltr:</b> Low Med Heavy None
					Adj. <input type="checkbox"/> <input type="checkbox"/> <input type="checkbox"/> <input checked="" type="checkbox"/>
					Cone <input type="checkbox"/> <input type="checkbox"/> <input type="checkbox"/> <input checked="" type="checkbox"/>
					Wall <input type="checkbox"/> <input checked="" type="checkbox"/> <input type="checkbox"/> <input type="checkbox"/>
					Bench <input type="checkbox"/> <input checked="" type="checkbox"/> <input type="checkbox"/> <input type="checkbox"/>

<b>GPS Rim Elev:</b> _____	<b>MH Diameter:</b> 4'	<b>Surcharge:</b> Yes <input type="checkbox"/> No <input checked="" type="checkbox"/>
----------------------------	------------------------	---

In MH 1 (Upstrm)	119-026(NW)	Depth High: 6.75	Elev: _____	Depth Low: _____	Elev: _____
In MH 2 (Upstrm)	119-030A(NE)	Depth High: 7.37	Elev: _____	Depth Low: _____	Elev: _____
In MH 3 (Upstrm)	_____	Depth High: _____	Elev: _____	Depth Low: _____	Elev: _____

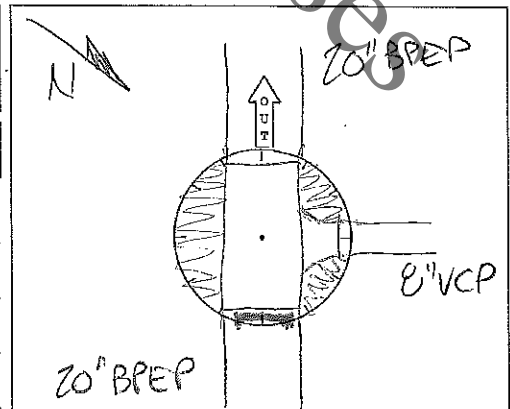
<b>Serv 1 Clock Pos:</b> _____	<b>Address:</b> _____
<b>Depth High:</b> _____	<b>Elev:</b> _____ <b>Depth Low:</b> _____ <b>Elev:</b> _____
<b>Serv 2 Clock Pos:</b> _____	<b>Address:</b> _____
<b>Depth High:</b> _____	<b>Elev:</b> _____ <b>Depth Low:</b> _____ <b>Elev:</b> _____
<b>Serv 3 Clock Pos:</b> _____	<b>Address:</b> _____
<b>Depth High:</b> _____	<b>Elev:</b> _____ <b>Depth Low:</b> _____ <b>Elev:</b> _____

Out is considered 12:00 and service clock position shall be given from 12:00.

<b>Out MH 1 (Dwnstrm)</b>	119-023	Depth: 7.45	Elev: _____
<b>Out MH 2 (Dwnstrm)</b>	_____	Depth: _____	Elev: _____

<b>Metered</b> <input type="checkbox"/>	<b>Outside Drop</b> <input type="checkbox"/>	<b>Inside Drop</b> <input type="checkbox"/>
---	--	---

**Comments:** LARGE CRACKS IN BASE SECTION.



SCANNED  
FILED JUL 09 2019



## ROCK RIVER WATER RECLAMATION DISTRICT

## Manhole Inspection Form

Manhole ID: <u>119-030A</u>	Inspector: <u>W. STAHL</u>	Date: <u>6/20/2019</u>
Address/Location: <u>4810 SPRINGBROOK RD</u>		
Surface Cover: Asphalt <input type="checkbox"/> Concrete <input type="checkbox"/> Turf <input checked="" type="checkbox"/> Gravel <input type="checkbox"/> Other <input type="checkbox"/> Ponding: Yes <input type="checkbox"/> No <input checked="" type="checkbox"/>		

Lid / Cover:	Open Grate <input type="checkbox"/>	Sanitary Stamp <input checked="" type="checkbox"/>	Bolt-down <input checked="" type="checkbox"/>	Frame:	Cast Iron <input checked="" type="checkbox"/>	Good <input type="checkbox"/>
	Concealed Pickhole <input checked="" type="checkbox"/>	No Stamp <input type="checkbox"/>	Gasket <input type="checkbox"/>		Other <input type="checkbox"/>	Fair <input checked="" type="checkbox"/>
	Open Pickhole <input type="checkbox"/>	Other <input type="checkbox"/>	Low Profile <input type="checkbox"/>			Poor <input type="checkbox"/>

Adj. Rings:	Precast <input type="checkbox"/>	Good <input type="checkbox"/>		Precast <input checked="" type="checkbox"/>	Good <input type="checkbox"/>		Precast <input checked="" type="checkbox"/>	Good <input type="checkbox"/>
	Brick <input type="checkbox"/>	Fair <input type="checkbox"/>		Brick <input type="checkbox"/>	Fair <input checked="" type="checkbox"/>		Brick <input type="checkbox"/>	Fair <input type="checkbox"/>
Qty	Block <input type="checkbox"/>	Poor <input type="checkbox"/>	Cone:	Block <input type="checkbox"/>	Poor <input type="checkbox"/>	Wall / Base:	Block <input type="checkbox"/>	Poor <input checked="" type="checkbox"/>
Size	Other <input type="checkbox"/>			Flat Top <input type="checkbox"/>			Other <input type="checkbox"/>	
	None <input checked="" type="checkbox"/>			Other <input type="checkbox"/>			Coating <input type="checkbox"/>	

Bench:	Conc. <input checked="" type="checkbox"/>	Flat <input type="checkbox"/>	Steps:	Cast Iron <input checked="" type="checkbox"/>	Good <input type="checkbox"/>	Infiltr:	Low	Med	Heavy	None
	Block <input type="checkbox"/>	Half <input checked="" type="checkbox"/>		Plastic <input type="checkbox"/>	Fair <input checked="" type="checkbox"/>	Adj.	<input type="checkbox"/>	<input type="checkbox"/>	<input type="checkbox"/>	<input checked="" type="checkbox"/>
	Brick <input type="checkbox"/>	3/4 <input type="checkbox"/>		None <input type="checkbox"/>	Poor <input type="checkbox"/>	Cone	<input type="checkbox"/>	<input type="checkbox"/>	<input type="checkbox"/>	<input checked="" type="checkbox"/>
	Other <input type="checkbox"/>		1st < 30" from Rim	Yes <input checked="" type="checkbox"/>	No <input type="checkbox"/>	Wall	<input checked="" type="checkbox"/>	<input type="checkbox"/>	<input type="checkbox"/>	<input type="checkbox"/>
	None <input type="checkbox"/>		Last < 24" from Bench	Yes <input checked="" type="checkbox"/>	No <input type="checkbox"/>	Bench	<input type="checkbox"/>	<input checked="" type="checkbox"/>	<input type="checkbox"/>	<input type="checkbox"/>

GPS Rim Elev:	MH Diameter: <u>4'</u>	Surcharge: Yes <input type="checkbox"/> No <input checked="" type="checkbox"/>
---------------	------------------------	--

In MH 1 (Upstrm)	<u>119-030</u>	Depth High: <u>7.40</u>	Elev: <u>        </u>	Depth Low: <u>        </u>	Elev: <u>        </u>
In MH 2 (Upstrm)	<u>        </u>	Depth High: <u>        </u>	Elev: <u>        </u>	Depth Low: <u>        </u>	Elev: <u>        </u>
In MH 3 (Upstrm)	<u>        </u>	Depth High: <u>        </u>	Elev: <u>        </u>	Depth Low: <u>        </u>	Elev: <u>        </u>

Serv 1 Clock Pos:	<u>3:00</u>	Address: <u>4810 SPRINGBROOK RD</u>
Depth High:	<u>        </u>	Elev: <u>6.85</u>
Serv 2 Clock Pos:	<u>        </u>	Address: <u>        </u>
Depth High:	<u>        </u>	Elev: <u>        </u>
Serv 3 Clock Pos:	<u>        </u>	Address: <u>        </u>
Depth High:	<u>        </u>	Elev: <u>        </u>

Out is considered 12:00 and service clock position shall be given from 12:00.

Out MH 1 (Dwnstrm)	<u>119-026A</u>	Depth: <u>7.40</u>	Elev: <u>        </u>
Out MH 2 (Dwnstrm)	<u>        </u>	Depth: <u>        </u>	Elev: <u>        </u>

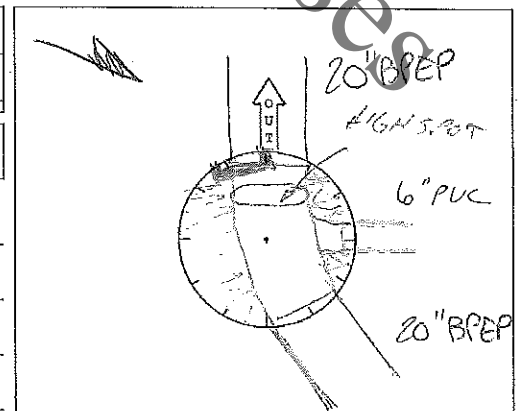
Metered <input type="checkbox"/>	Outside Drop <input type="checkbox"/>	Inside Drop <input type="checkbox"/>
----------------------------------	---------------------------------------	--------------------------------------

Comments: SERVICE PARTIALLY SUBMERGED.

OUT PIPE IN BAD SHAPE. BREAK LIKE

FLOW LINE HAS HIGH SPOT CAUSING RESTRICTED

FLOW 6.80 DEEP.



# ROCK RIVER WATER RECLAMATION DISTRICT

## Manhole Inspection Form

<b>Manhole ID:</b> 119-030	<b>Inspector:</b> W. STALE	<b>Date:</b> 6/20/2019
<b>Address/Location:</b> 4820 SPRINGBROOK RD		
<b>Surface Cover:</b> Asphalt <input type="checkbox"/> Concrete <input type="checkbox"/> Turf <input checked="" type="checkbox"/> Gravel <input type="checkbox"/> Other <input type="checkbox"/> <b>Ponding:</b> Yes <input checked="" type="checkbox"/> No <input type="checkbox"/>		

<b>Lid / Cover:</b>	Open Grate <input type="checkbox"/>	Sanitary Stamp <input checked="" type="checkbox"/>	Bolt-down <input checked="" type="checkbox"/>	<b>Frame:</b>	Cast Iron <input checked="" type="checkbox"/>	Good <input type="checkbox"/>
	Concealed Pickhole <input checked="" type="checkbox"/>	No Stamp <input type="checkbox"/>	Gasket <input type="checkbox"/>		Other <input type="checkbox"/>	Fair <input checked="" type="checkbox"/>
	Open Pickhole <input type="checkbox"/>	Other <input type="checkbox"/>	Low Profile <input type="checkbox"/>			Poor <input type="checkbox"/>

<b>Adj. Rings:</b>	Precast <input type="checkbox"/>	Good <input type="checkbox"/>	<b>Adj. Rings:</b>	Precast <input checked="" type="checkbox"/>	Good <input type="checkbox"/>	<b>Wall / Base:</b>	Precast <input checked="" type="checkbox"/>	Good <input type="checkbox"/>
	Brick <input type="checkbox"/>	Fair <input checked="" type="checkbox"/>		Brick <input type="checkbox"/>	Fair <input checked="" type="checkbox"/>		Brick <input type="checkbox"/>	Fair <input type="checkbox"/>
<b>Qty</b>	Block <input type="checkbox"/>	Poor <input type="checkbox"/>	<b>Cone:</b>	Block <input type="checkbox"/>	Poor <input type="checkbox"/>		Block <input type="checkbox"/>	Poor <input checked="" type="checkbox"/>
<b>Size</b>	Other <input type="checkbox"/>			Flat Top <input type="checkbox"/>			Other <input type="checkbox"/>	
<b>?</b>	None <input type="checkbox"/>			Other <input type="checkbox"/>			Coating <input type="checkbox"/>	

<b>Bench:</b>	Conc. <input checked="" type="checkbox"/>	Flat <input type="checkbox"/>	<b>Steps:</b>	Cast Iron <input checked="" type="checkbox"/>	Good <input type="checkbox"/>	<b>Infiltr:</b>	Low	Med	Heavy	None
	Block <input type="checkbox"/>	Half <input checked="" type="checkbox"/>		Plastic <input type="checkbox"/>	Fair <input checked="" type="checkbox"/>	Adj.	<input checked="" type="checkbox"/>	<input type="checkbox"/>	<input type="checkbox"/>	<input type="checkbox"/>
	Brick <input type="checkbox"/>	3/4 <input type="checkbox"/>		None <input type="checkbox"/>	Poor <input type="checkbox"/>	Cone	<input checked="" type="checkbox"/>	<input type="checkbox"/>	<input type="checkbox"/>	<input type="checkbox"/>
	Other <input type="checkbox"/>		1 <sup>st</sup> < 30" from Rim	Yes <input type="checkbox"/> No <input checked="" type="checkbox"/>		Wall	<input checked="" type="checkbox"/>	<input type="checkbox"/>	<input type="checkbox"/>	<input type="checkbox"/>
	None <input type="checkbox"/>		Last < 24" from Bench	Yes <input checked="" type="checkbox"/> No <input type="checkbox"/>		Bench	<input type="checkbox"/>	<input checked="" type="checkbox"/>	<input type="checkbox"/>	<input type="checkbox"/>

<b>GPS Rim Elev:</b>	<b>MH Diameter:</b> 4'	<b>Surcharge:</b> Yes <input checked="" type="checkbox"/> No <input type="checkbox"/>
----------------------	------------------------	---

In MH 1 (Upstrm)	119-031	Depth High:	7.15	Elev:		Depth Low:		Elev:	
In MH 2 (Upstrm)		Depth High:		Elev:		Depth Low:		Elev:	
In MH 3 (Upstrm)		Depth High:		Elev:		Depth Low:		Elev:	

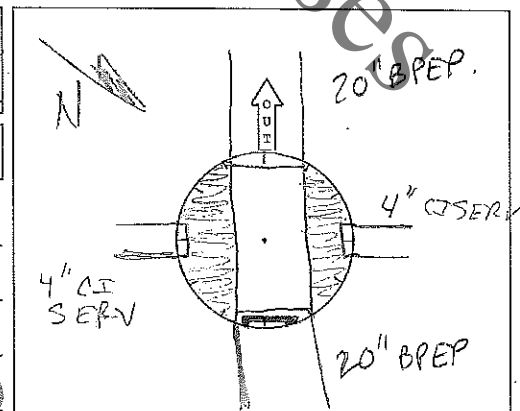
Serv 1 Clock Pos:	3:00	Address:	
Depth High:	5.15	Elev:	
Serv 2 Clock Pos:	9:00	Address:	
Depth High:	6.45	Elev:	
Serv 3 Clock Pos:		Address:	
Depth High:		Elev:	
Depth Low:		Elev:	

Out is considered 12:00 and service clock position shall be given from 12:00.

Out MH 1 (Dwnstrm)	119-030A	Depth:	7.25	Elev:	
Out MH 2 (Dwnstrm)		Depth:		Elev:	

Metered <input type="checkbox"/>	Outside Drop <input type="checkbox"/>	Inside Drop <input type="checkbox"/>
----------------------------------	---------------------------------------	--------------------------------------

**Comments:** MED SINK HOLE ON SOUTH SIDE OF RIM.



SCANNED  
FILED JUL 09 2019

## ROCK RIVER WATER RECLAMATION DISTRICT

## Manhole Inspection Form

Manhole ID: <u>119-032</u>	Inspector: <u>CB</u>	Date: <u>July 8, 2019</u>
Address/Location: <u>BEHIND 5002 SPRING BROOK ROAD</u>		
Surface Cover: Asphalt <input type="checkbox"/> Concrete <input type="checkbox"/> Turf <input checked="" type="checkbox"/> Gravel <input type="checkbox"/> Other <input type="checkbox"/> Ponding: Yes <input type="checkbox"/> No <input checked="" type="checkbox"/>		

Lid / Cover:	Open Grate <input type="checkbox"/>	Sanitary Stamp <input checked="" type="checkbox"/>	Bolt-down <input checked="" type="checkbox"/>	Frame:	Cast Iron <input checked="" type="checkbox"/>	Good <input type="checkbox"/>
	Concealed Pickhole <input checked="" type="checkbox"/>	No Stamp <input type="checkbox"/>	Gasket <input checked="" type="checkbox"/>		Other <input type="checkbox"/>	Fair <input checked="" type="checkbox"/>
	Open Pickhole <input type="checkbox"/>	Other <input type="checkbox"/>	Low Profile <input type="checkbox"/>			Poor <input type="checkbox"/>

Adj. Rings:	Precast <input type="checkbox"/>	Good <input type="checkbox"/>		Precast <input checked="" type="checkbox"/>	Good <input type="checkbox"/>		Precast <input checked="" type="checkbox"/>	Good <input type="checkbox"/>
	Brick <input checked="" type="checkbox"/>	Fair <input checked="" type="checkbox"/>		Brick <input type="checkbox"/>	Fair <input checked="" type="checkbox"/>		Brick <input type="checkbox"/>	Fair <input type="checkbox"/>
Qty	Block <input type="checkbox"/>	Poor <input type="checkbox"/>	Cone:	Block <input type="checkbox"/>	Poor <input type="checkbox"/>	Wall / Base:	Block <input type="checkbox"/>	Poor <input checked="" type="checkbox"/>
Size	Other <input type="checkbox"/>			Flat Top <input type="checkbox"/>			Other <input type="checkbox"/>	
	None <input type="checkbox"/>			Other <input type="checkbox"/>			Coating <input type="checkbox"/>	

Bench:	Conc. <input checked="" type="checkbox"/>	Flat <input type="checkbox"/>	Steps:	Cast Iron <input checked="" type="checkbox"/>	Good <input type="checkbox"/>	Infiltr:	Low	Med	Heavy	None
	Block <input type="checkbox"/>	Half <input type="checkbox"/>		Plastic <input type="checkbox"/>	Fair <input checked="" type="checkbox"/>	Adj.	<input checked="" type="checkbox"/>	<input type="checkbox"/>	<input type="checkbox"/>	<input type="checkbox"/>
	Brick <input type="checkbox"/>	3/4 <input checked="" type="checkbox"/>		None <input type="checkbox"/>	Poor <input type="checkbox"/>	Cone	<input checked="" type="checkbox"/>	<input type="checkbox"/>	<input type="checkbox"/>	<input type="checkbox"/>
	Other <input type="checkbox"/>		1st < 30" from Rim	Yes <input checked="" type="checkbox"/>	No <input type="checkbox"/>	Wall	<input checked="" type="checkbox"/>	<input type="checkbox"/>	<input type="checkbox"/>	<input type="checkbox"/>
	None <input type="checkbox"/>		Last < 24" from Bench	Yes <input checked="" type="checkbox"/>	No <input type="checkbox"/>	Bench	<input checked="" type="checkbox"/>	<input type="checkbox"/>	<input type="checkbox"/>	<input type="checkbox"/>

GPS Rim Elev: _____	MH Diameter: <u>4'</u>	Surcharge: Yes <input type="checkbox"/> No <input checked="" type="checkbox"/>
---------------------	------------------------	--

In MH 1 (Upstrm) <u>119-034</u>	Depth High: <u>7.91</u>	Elev: _____	Depth Low: _____	Elev: _____
In MH 2 (Upstrm) _____	Depth High: _____	Elev: _____	Depth Low: _____	Elev: _____
In MH 3 (Upstrm) _____	Depth High: _____	Elev: _____	Depth Low: _____	Elev: _____

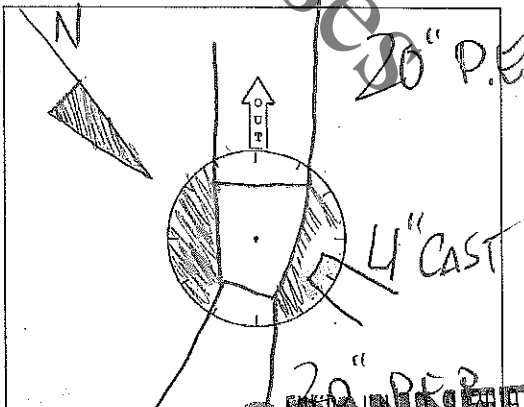
Serv 1 Clock Pos: <u>4</u>	Address: _____
Depth High: <u>5.75</u>	Elev: _____ Depth Low: _____ Elev: _____
Serv 2 Clock Pos: _____	Address: _____
Depth High: _____	Elev: _____ Depth Low: _____ Elev: _____
Serv 3 Clock Pos: _____	Address: _____
Depth High: _____	Elev: _____ Depth Low: _____ Elev: _____

Out is considered 12:00 and service clock position shall be given from 12:00.

Out MH 1 (Dwnstrm) <u>119-031</u>	Depth: <u>7.95</u>	Elev: _____
Out MH 2 (Dwnstrm) _____	Depth: _____	Elev: _____

Metered <input type="checkbox"/>	Outside Drop <input type="checkbox"/>	Inside Drop <input type="checkbox"/>
----------------------------------	---------------------------------------	--------------------------------------

Comments: BENCH AND LOWER BARREL ARE DETERIORATING RAPIDLY AND ARE IN POOR SHAPE. LIGHT ROOTS AND LIGHT INFILTRATION COMING IN @ WALL AND



## ROCK RIVER WATER RECLAMATION DISTRICT

## Manhole Inspection Form

Manhole ID: <u>119-034</u>	Inspector: <u>CK</u>	Date: <u>July 8, 2019</u>
Address/Location: <u>BEHIND 5035 CROFTON DRIVE</u>		
Surface Cover: Asphalt <input type="checkbox"/> Concrete <input type="checkbox"/> Turf <input checked="" type="checkbox"/> Gravel <input type="checkbox"/> Other <input type="checkbox"/> Ponding: Yes <input type="checkbox"/> No <input checked="" type="checkbox"/>		

Lid / Cover:	Open Grate <input type="checkbox"/>	Sanitary Stamp <input checked="" type="checkbox"/>	Bolt-down <input checked="" type="checkbox"/>	Frame:	Cast Iron <input checked="" type="checkbox"/>	Good <input type="checkbox"/>
	Concealed Pickhole <input checked="" type="checkbox"/>	No Stamp <input type="checkbox"/>	Gasket <input checked="" type="checkbox"/>		Other <input type="checkbox"/>	Fair <input checked="" type="checkbox"/>
	Open Pickhole <input type="checkbox"/>	Other <input type="checkbox"/>	Low Profile <input type="checkbox"/>			Poor <input type="checkbox"/>

Adj. Rings:	Precast <input checked="" type="checkbox"/>	Good <input type="checkbox"/>		Precast <input checked="" type="checkbox"/>	Good <input type="checkbox"/>		Precast <input checked="" type="checkbox"/>	Good <input type="checkbox"/>
	Brick <input type="checkbox"/>	Fair <input checked="" type="checkbox"/>		Brick <input type="checkbox"/>	Fair <input checked="" type="checkbox"/>		Brick <input type="checkbox"/>	Fair <input checked="" type="checkbox"/>
Qty	Block <input type="checkbox"/>	Poor <input type="checkbox"/>	Cone:	Block <input type="checkbox"/>	Poor <input type="checkbox"/>	Wall / Base:	Block <input type="checkbox"/>	Poor <input type="checkbox"/>
Size	Other <input type="checkbox"/>			Flat Top <input type="checkbox"/>			Other <input type="checkbox"/>	
	None <input type="checkbox"/>			Other <input type="checkbox"/>			Coating <input type="checkbox"/>	

Bench:	Conc. <input checked="" type="checkbox"/>	Flat <input type="checkbox"/>	Steps:	Cast Iron <input type="checkbox"/>	Good <input type="checkbox"/>	Infiltr:	Low	Med	Heavy	None
	Block <input type="checkbox"/>	Half <input type="checkbox"/>		Plastic <input checked="" type="checkbox"/>	Fair <input checked="" type="checkbox"/>	Adj.	<input type="checkbox"/>	<input type="checkbox"/>	<input type="checkbox"/>	<input checked="" type="checkbox"/>
	Brick <input type="checkbox"/>	3/4 <input checked="" type="checkbox"/>		None <input type="checkbox"/>	Poor <input type="checkbox"/>	Cone	<input type="checkbox"/>	<input type="checkbox"/>	<input type="checkbox"/>	<input checked="" type="checkbox"/>
	Other <input type="checkbox"/>		1 <sup>st</sup> < 30" from Rim	Yes <input checked="" type="checkbox"/>	No <input type="checkbox"/>	Wall	<input checked="" type="checkbox"/>	<input type="checkbox"/>	<input type="checkbox"/>	<input type="checkbox"/>
	None <input type="checkbox"/>		Last < 24" from Bench	Yes <input checked="" type="checkbox"/>	No <input type="checkbox"/>	Bench	<input checked="" type="checkbox"/>	<input type="checkbox"/>	<input type="checkbox"/>	<input type="checkbox"/>

GPS Rim Elev: _____	MH Diameter: <u>4'</u>	Surcharge: Yes <input type="checkbox"/> No <input checked="" type="checkbox"/>
---------------------	------------------------	--

In MH 1 (Upstrm) <u>119-035</u>	Depth High: <u>6.53</u>	Elev: _____	Depth Low: _____	Elev: _____
In MH 2 (Upstrm) <u>120-002</u>	Depth High: <u>7.16</u>	Elev: _____	Depth Low: _____	Elev: _____
In MH 3 (Upstrm) <u>119-056</u>	Depth High: <u>6.70</u>	Elev: _____	Depth Low: _____	Elev: _____

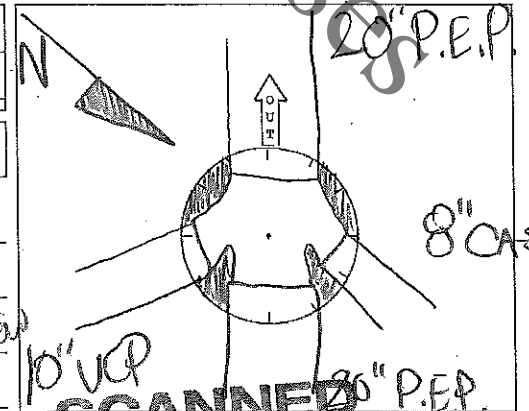
Serv 1 Clock Pos: _____	Address: _____	Depth High: _____	Elev: _____	Depth Low: _____	Elev: _____
Serv 2 Clock Pos: _____	Address: _____	Depth High: _____	Elev: _____	Depth Low: _____	Elev: _____
Serv 3 Clock Pos: _____	Address: _____	Depth High: _____	Elev: _____	Depth Low: _____	Elev: _____

Out is considered 12:00 and service clock position shall be given from 12:00.

Out MH 1 (Dwnstrm) <u>119-032</u>	Depth: <u>7.20</u>	Elev: _____
Out MH 2 (Dwnstrm) _____	Depth: _____	Elev: _____

Metered <input type="checkbox"/>	Outside Drop <input type="checkbox"/>	Inside Drop <input type="checkbox"/>
----------------------------------	---------------------------------------	--------------------------------------

Comments: LIGHT ROOTS IN BARREL WALL  
ALONG W/ INFILTRATION AND MINERAL  
DEPOSIT FROM PREVIOUS LEAKS. ORIENTATION  
KEPT ME FROM A MORE ACCURATE TMV



Walls lined in 2019 w/ 175 mils of high-build epoxy. May require spot repair of existing coating.

12

# ROCK RIVER WATER RECLAMATION DISTRICT

## Manhole Inspection Form

Manhole ID: <u>120-002</u>	Inspector: <u>CB</u>	Date: <u>July 3, 2019</u>
Address/Location: <u>IMPERIAL OAKS DRIVE</u>		
Surface Cover: Asphalt <input type="checkbox"/> Concrete <input type="checkbox"/> Turf <input checked="" type="checkbox"/> Gravel <input type="checkbox"/> Other <input type="checkbox"/> Ponding: Yes <input type="checkbox"/> No <input checked="" type="checkbox"/>		

Lid / Cover:	Open Grate <input type="checkbox"/>	Sanitary Stamp <input checked="" type="checkbox"/>	Bolt-down <input checked="" type="checkbox"/>	Frame:	Cast Iron <input checked="" type="checkbox"/>	Good <input type="checkbox"/>
	Concealed Pickhole <input checked="" type="checkbox"/>	No Stamp <input type="checkbox"/>	Gasket <input checked="" type="checkbox"/>		Other <input type="checkbox"/>	Fair <input checked="" type="checkbox"/>
	Open Pickhole <input type="checkbox"/>	Other <input type="checkbox"/>	Low Profile <input type="checkbox"/>			Poor <input type="checkbox"/>

Adj. Rings:	Precast <input type="checkbox"/>	Good <input type="checkbox"/>	Precast <input checked="" type="checkbox"/>	Good <input type="checkbox"/>	Wall / Base:	Precast <input checked="" type="checkbox"/>	Good <input type="checkbox"/>
	Brick <input type="checkbox"/>	Fair <input type="checkbox"/>	Brick <input type="checkbox"/>	Fair <input checked="" type="checkbox"/>		Brick <input type="checkbox"/>	Fair <input checked="" type="checkbox"/>
Qty Size	Block <input type="checkbox"/>	Poor <input type="checkbox"/>	Block <input type="checkbox"/>	Poor <input type="checkbox"/>		Block <input type="checkbox"/>	Poor <input type="checkbox"/>
	Other <input type="checkbox"/>		Flat Top <input type="checkbox"/>			Other <input type="checkbox"/>	
	None <input checked="" type="checkbox"/>		Other <input type="checkbox"/>			Coating <input type="checkbox"/>	

Bench:	Conc. <input checked="" type="checkbox"/>	Flat <input type="checkbox"/>	Cast Iron <input checked="" type="checkbox"/>	Good <input type="checkbox"/>	Infiltr:	Low	Med	Heavy	None
	Block <input type="checkbox"/>	Half <input type="checkbox"/>	Plastic <input type="checkbox"/>	Fair <input checked="" type="checkbox"/>	Adj.	<input type="checkbox"/>	<input type="checkbox"/>	<input type="checkbox"/>	<input checked="" type="checkbox"/>
	Brick <input type="checkbox"/>	3/4 <input checked="" type="checkbox"/>	None <input type="checkbox"/>	Poor <input type="checkbox"/>	Cone	<input type="checkbox"/>	<input type="checkbox"/>	<input type="checkbox"/>	<input checked="" type="checkbox"/>
	Other <input type="checkbox"/>				Wall	<input checked="" type="checkbox"/>	<input type="checkbox"/>	<input type="checkbox"/>	<input type="checkbox"/>
	None <input type="checkbox"/>				Bench	<input checked="" type="checkbox"/>	<input type="checkbox"/>	<input type="checkbox"/>	<input type="checkbox"/>
			1st < 30" from Rim	Yes <input checked="" type="checkbox"/> No <input type="checkbox"/>					
			Last < 24" from Bench	Yes <input checked="" type="checkbox"/> No <input type="checkbox"/>					

GPS Rim Elev: <u>722.67</u>	MH Diameter: <u>48"</u>	Surcharge: Yes <input type="checkbox"/> No <input checked="" type="checkbox"/>
-----------------------------	-------------------------	--

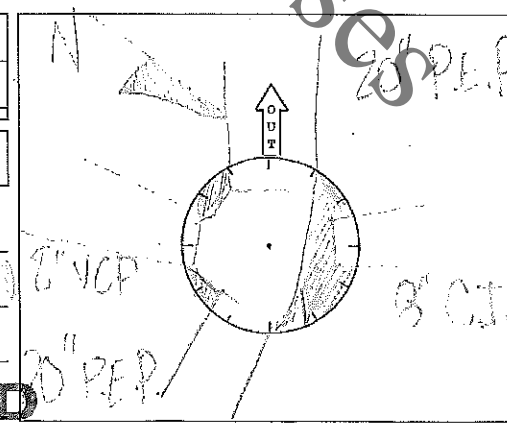
In MH 1 (Upstrm) <u>120-014</u>	Depth High: <u>2.95</u>	Elev: <u>809.72</u>	Depth Low: _____	Elev: _____
In MH 2 (Upstrm) <u>120-003</u>	Depth High: <u>2.10</u>	Elev: <u>810.57</u>	Depth Low: _____	Elev: _____
In MH 3 (Upstrm) <u>120-010</u>	Depth High: <u>2.27</u>	Elev: <u>810.40</u>	Depth Low: _____	Elev: _____

Serv 1 Clock Pos: _____	Address: _____
Depth High: _____	Elev: _____ Depth Low: _____ Elev: _____
Serv 2 Clock Pos: _____	Address: _____
Depth High: _____	Elev: _____ Depth Low: _____ Elev: _____
Serv 3 Clock Pos: _____	Address: _____
Depth High: _____	Elev: _____ Depth Low: _____ Elev: _____

Out is considered 12:00 and service clock position shall be given from 12:00.		
Out MH 1 (Dwnstrm) <u>120-0</u>	Depth: <u>13.00</u>	Elev: <u>809.67</u>
Out MH 2 (Dwnstrm) _____	Depth: _____	Elev: _____

Metered <input type="checkbox"/>	Outside Drop <input type="checkbox"/>	Inside Drop <input type="checkbox"/>
----------------------------------	---------------------------------------	--------------------------------------

Comments: BENCH AND BOTTOM LINE SECTION  
LEAKING LIGHT INFILTRATION, GASKET BOSS  
ON LID AND NO BOLTS



SCANNED  
JUL 09 2019



## ROCK RIVER WATER RECLAMATION DISTRICT

## Manhole Inspection Form

Manhole ID: 120-014 Inspector: CS Date: July 3, 2019

Address/Location: BACK LAGO OF 5169 CROFTON DRIVE

Surface Cover: Asphalt ☐ Concrete ☐ Turf ☒ Gravel ☐ Other ☐ Ponding: Yes ☐ No ☒

Lid / Cover:	Open Grate <input type="checkbox"/>	Sanitary Stamp <input checked="" type="checkbox"/>	Bolt-down <input checked="" type="checkbox"/>	Frame:	Cast Iron <input checked="" type="checkbox"/>	Good <input type="checkbox"/>
	Concealed Pickhole <input checked="" type="checkbox"/>	No Stamp <input type="checkbox"/>	Gasket <input checked="" type="checkbox"/>		Other <input type="checkbox"/>	Fair <input checked="" type="checkbox"/>
	Open Pickhole <input type="checkbox"/>	Other <input type="checkbox"/>	Low Profile <input type="checkbox"/>			Poor <input type="checkbox"/>

Adj. Rings:	Precast <input type="checkbox"/>	Good <input type="checkbox"/>	Cone:	Precast <input checked="" type="checkbox"/>	Good <input type="checkbox"/>	Wall / Base:	Precast <input checked="" type="checkbox"/>	Good <input type="checkbox"/>
	Brick <input type="checkbox"/>	Fair <input type="checkbox"/>		Brick <input type="checkbox"/>	Fair <input checked="" type="checkbox"/>		Brick <input type="checkbox"/>	Fair <input checked="" type="checkbox"/>
	Block <input type="checkbox"/>	Poor <input type="checkbox"/>		Block <input type="checkbox"/>	Poor <input type="checkbox"/>		Block <input type="checkbox"/>	Poor <input type="checkbox"/>
	Other <input type="checkbox"/>			Flat Top <input type="checkbox"/>			Other <input type="checkbox"/>	
	None <input checked="" type="checkbox"/>			Other <input type="checkbox"/>			Coating <input type="checkbox"/>	

Bench:	Conc. <input checked="" type="checkbox"/>	Flat <input type="checkbox"/>	Steps:	Cast Iron <input checked="" type="checkbox"/>	Good <input type="checkbox"/>	Infiltr:	Low	Med	Heavy	None	
	Block <input type="checkbox"/>	Half <input type="checkbox"/>		Plastic <input type="checkbox"/>	Fair <input checked="" type="checkbox"/>		Adj.	<input type="checkbox"/>	<input type="checkbox"/>	<input type="checkbox"/>	<input checked="" type="checkbox"/>
	Brick <input type="checkbox"/>	3/4 <input checked="" type="checkbox"/>		None <input type="checkbox"/>	Poor <input type="checkbox"/>		Cone	<input type="checkbox"/>	<input type="checkbox"/>	<input type="checkbox"/>	<input checked="" type="checkbox"/>
	Other <input type="checkbox"/>			1 <sup>st</sup> < 30" from Rim Yes <input checked="" type="checkbox"/> No <input type="checkbox"/>	Wall		<input checked="" type="checkbox"/>	<input type="checkbox"/>	<input type="checkbox"/>	<input type="checkbox"/>	
	None <input type="checkbox"/>			Last < 24" from Bench Yes <input checked="" type="checkbox"/> No <input type="checkbox"/>	Bench		<input checked="" type="checkbox"/>	<input type="checkbox"/>	<input type="checkbox"/>	<input type="checkbox"/>	

GPS Rim Elev: 820.26 MH Diameter: 4' Surchage: Yes ☒ No ☐

In MH 1 (Upstrm) 120-015 Depth High: 9.22 Elev: 811.04 Depth Low: \_\_\_\_\_ Elev: \_\_\_\_\_  
 In MH 2 (Upstrm) \_\_\_\_\_ Depth High: \_\_\_\_\_ Elev: \_\_\_\_\_ Depth Low: \_\_\_\_\_ Elev: \_\_\_\_\_  
 In MH 3 (Upstrm) \_\_\_\_\_ Depth High: \_\_\_\_\_ Elev: \_\_\_\_\_ Depth Low: \_\_\_\_\_ Elev: \_\_\_\_\_

Serv 1 Clock Pos: \_\_\_\_\_ Address: \_\_\_\_\_  
 Depth High: \_\_\_\_\_ Elev: \_\_\_\_\_ Depth Low: \_\_\_\_\_ Elev: \_\_\_\_\_  
 Serv 2 Clock Pos: \_\_\_\_\_ Address: \_\_\_\_\_  
 Depth High: \_\_\_\_\_ Elev: \_\_\_\_\_ Depth Low: \_\_\_\_\_ Elev: \_\_\_\_\_  
 Serv 3 Clock Pos: \_\_\_\_\_ Address: \_\_\_\_\_  
 Depth High: \_\_\_\_\_ Elev: \_\_\_\_\_ Depth Low: \_\_\_\_\_ Elev: \_\_\_\_\_

Out is considered 12:00 and service clock position shall be given from 12:00.

Out MH 1 (Dwnstrm) 120-002 Depth: 9.29 Elev: 810.97  
 Out MH 2 (Dwnstrm) \_\_\_\_\_ Depth: \_\_\_\_\_ Elev: \_\_\_\_\_

Metered ☐ Outside Drop ☐ Inside Drop ☐

Comments: BOTTOM BARREL 7.5 FEET 1/2 INCHES MOVER  
EVERYWHERE 12047 IN 1/2 INCHES ON 7/20/15  
WALL AND BENCHES TRAIL ON 3/15/15  
CHARGE





## ROCK RIVER WATER RECLAMATION DISTRICT

## Manhole Inspection Form

Manhole ID: <u>120-015</u>	Inspector: <u>CB</u>	Date: <u>July 3, 2019</u>
Address/Location: <u>BACKYARD OF 5140 FARMINGTON CLOSE</u>		
Surface Cover: Asphalt <input type="checkbox"/> Concrete <input type="checkbox"/> Turf <input checked="" type="checkbox"/> Gravel <input type="checkbox"/> Other <input type="checkbox"/> Ponding: Yes <input type="checkbox"/> No <input checked="" type="checkbox"/>		

Lid / Cover:	Open Grate <input type="checkbox"/>	Sanitary Stamp <input checked="" type="checkbox"/>	Bolt-down <input checked="" type="checkbox"/>	Frame:	Cast Iron <input checked="" type="checkbox"/>	Good <input type="checkbox"/>
	Concealed Pickhole <input checked="" type="checkbox"/>	No Stamp <input type="checkbox"/>	Gasket <input checked="" type="checkbox"/>		Other <input type="checkbox"/>	Fair <input checked="" type="checkbox"/>
	Open Pickhole <input type="checkbox"/>	Other <input type="checkbox"/>	Low Profile <input type="checkbox"/>			Poor <input type="checkbox"/>

Adj. Rings:	Precast <input type="checkbox"/>	Good <input type="checkbox"/>		Precast <input checked="" type="checkbox"/>	Good <input type="checkbox"/>		Precast <input checked="" type="checkbox"/>	Good <input type="checkbox"/>
	Brick <input type="checkbox"/>	Fair <input type="checkbox"/>		Brick <input type="checkbox"/>	Fair <input checked="" type="checkbox"/>		Brick <input type="checkbox"/>	Fair <input type="checkbox"/>
Qty Size	Block <input type="checkbox"/>	Poor <input type="checkbox"/>		Block <input type="checkbox"/>	Poor <input type="checkbox"/>		Block <input type="checkbox"/>	Poor <input checked="" type="checkbox"/>
	Other <input type="checkbox"/>			Flat Top <input type="checkbox"/>			Other <input type="checkbox"/>	
	None <input checked="" type="checkbox"/>			Other <input type="checkbox"/>			Coating <input type="checkbox"/>	

Bench:	Conc. <input checked="" type="checkbox"/>	Flat <input type="checkbox"/>		Cast Iron <input checked="" type="checkbox"/>	Good <input type="checkbox"/>		Infiltr:	Low	Med	Heavy	None
	Block <input type="checkbox"/>	Half <input type="checkbox"/>		Plastic <input type="checkbox"/>	Fair <input checked="" type="checkbox"/>		Adj.	<input type="checkbox"/>	<input type="checkbox"/>	<input type="checkbox"/>	<input checked="" type="checkbox"/>
	Brick <input type="checkbox"/>	3/4 <input checked="" type="checkbox"/>		None <input type="checkbox"/>	Poor <input type="checkbox"/>		Cone	<input type="checkbox"/>	<input type="checkbox"/>	<input type="checkbox"/>	<input checked="" type="checkbox"/>
	Other <input type="checkbox"/>			1 <sup>st</sup> < 30" from Rim	Yes <input checked="" type="checkbox"/> No <input type="checkbox"/>		Wall	<input type="checkbox"/>	<input checked="" type="checkbox"/>	<input type="checkbox"/>	<input type="checkbox"/>
	None <input type="checkbox"/>			Last < 24" from Bench	Yes <input checked="" type="checkbox"/> No <input type="checkbox"/>		Bench	<input checked="" type="checkbox"/>	<input type="checkbox"/>	<input type="checkbox"/>	<input type="checkbox"/>

GPS Rim Elev: <u>812.69</u>	MH Diameter: <u>4'</u>	Surcharge: Yes <input type="checkbox"/> No <input type="checkbox"/>
-----------------------------	------------------------	---

In MH 1 (Upstrm) <u>120-016</u>	Depth High: <u>9.88</u>	Elev: <u>812.81</u>	Depth Low: _____	Elev: _____
In MH 2 (Upstrm) _____	Depth High: _____	Elev: _____	Depth Low: _____	Elev: _____
In MH 3 (Upstrm) _____	Depth High: _____	Elev: _____	Depth Low: _____	Elev: _____

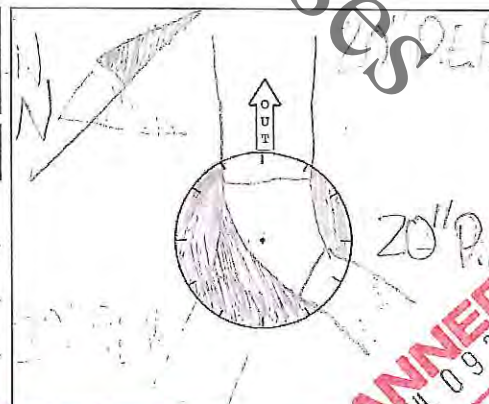
Serv 1 Clock Pos: _____	Address: _____	Depth High: _____	Elev: _____	Depth Low: _____	Elev: _____
Serv 2 Clock Pos: _____	Address: _____	Depth High: _____	Elev: _____	Depth Low: _____	Elev: _____
Serv 3 Clock Pos: _____	Address: _____	Depth High: _____	Elev: _____	Depth Low: _____	Elev: _____

Out is considered 12:00 and service clock position shall be given from 12:00.

Out MH 1 (Dwnstrm) <u>120-014</u>	Depth: <u>9.94</u>	Elev: <u>812.75</u>
Out MH 2 (Dwnstrm) _____	Depth: _____	Elev: _____

Metered <input type="checkbox"/>	Outside Drop <input type="checkbox"/>	Inside Drop <input type="checkbox"/>
----------------------------------	---------------------------------------	--------------------------------------

Comments: 20" BOREHOLE SAMPLE ABOUT 10  
DEEPER TO TRY GET MORE SAMPLES.  
INTERESTING COMING IN FROM LINE  
NO BOREHOLE 20"





## ROCK RIVER WATER RECLAMATION DISTRICT

## Manhole Inspection Form

Manhole ID: 120-016 Inspector: CB Date: July 3, 2019  
 Address/Location: IN WOODED LOT WEST OF APPLEWOOD LN AND NORTH OF SPRINGS  
 Surface Cover: Asphalt ☐ Concrete ☐ Turf ☒ Gravel ☐ Other ☐ Ponding: Yes ☐ No ☒

Lid / Cover: Open Grate ☐ Sanitary Stamp ☒ Bolt-down ☒  
 Concealed Pickhole ☒ No Stamp ☐ Gasket ☒  
 Open Pickhole ☐ Other ☐ Low Profile ☐  
 Frame: Cast Iron ☒ Good ☐  
 Other ☐ Fair ☒  
 Poor ☐

Adj. Rings: Precast ☒ Good ☐  
 Brick ☐ Fair ☒  
 Block ☐ Poor ☐  
 Other ☐  
 None ☐  
 Qty: 2 Size: 8"  
 Cone: Precast ☒ Good ☐  
 Brick ☐ Fair ☒  
 Block ☐ Poor ☐  
 Flat Top ☐  
 Other ☐  
 Wall / Base: Precast ☒ Good ☐  
 Brick ☐ Fair ☐  
 Block ☐ Poor ☒  
 Other ☐  
 Coating ☐

Bench: Conc. ☒ Flat ☐  
 Block ☐ Half ☐  
 Brick ☐ 3/4 ☒  
 Other ☐  
 None ☐  
 Steps: Cast Iron ☒ Good ☐  
 Plastic ☐ Fair ☒  
 None ☐ Poor ☐  
 1<sup>st</sup> < 30" from Rim Yes ☒ No ☐  
 Last < 24" from Bench Yes ☒ No ☐  
 Infiltr: Low Med Heavy None  
 Adj. ☐ ☐ ☐ ☒  
 Cone ☐ ☐ ☐ ☒  
 Wall ☒ ☐ ☐ ☐  
 Bench ☐ ☐ ☐ ☒

GPS Rim Elev: 823.84 MH Diameter: 4' Surchage: Yes ☐ No ☐

In MH 1 (Upstrm) 120-017 Depth High: 9.40 Elev: 814.43 Depth Low: \_\_\_\_\_ Elev: \_\_\_\_\_  
 In MH 2 (Upstrm) 120-148 Depth High: 8.18 Elev: 815.06 Depth Low: \_\_\_\_\_ Elev: \_\_\_\_\_  
 In MH 3 (Upstrm) \_\_\_\_\_ Depth High: \_\_\_\_\_ Elev: \_\_\_\_\_ Depth Low: \_\_\_\_\_ Elev: \_\_\_\_\_

Serv 1 Clock Pos: \_\_\_\_\_ Address: \_\_\_\_\_  
 Depth High: \_\_\_\_\_ Elev: \_\_\_\_\_ Depth Low: \_\_\_\_\_ Elev: \_\_\_\_\_  
 Serv 2 Clock Pos: \_\_\_\_\_ Address: \_\_\_\_\_  
 Depth High: \_\_\_\_\_ Elev: \_\_\_\_\_ Depth Low: \_\_\_\_\_ Elev: \_\_\_\_\_  
 Serv 3 Clock Pos: \_\_\_\_\_ Address: \_\_\_\_\_  
 Depth High: \_\_\_\_\_ Elev: \_\_\_\_\_ Depth Low: \_\_\_\_\_ Elev: \_\_\_\_\_

Out is considered 12:00 and service clock position shall be given from 12:00.  
 Out MH 1 (Dwnstrm) 120-015 Depth: 9.59 Elev: 814.25  
 Out MH 2 (Dwnstrm) \_\_\_\_\_ Depth: \_\_\_\_\_ Elev: \_\_\_\_\_

Metered ☐ Outside Drop ☐ Inside Drop ☐

Comments: 14' DIAMETER @ 2:00 PM - 11:00 AM  
IN 01 - 11:00 AM - 11:00 AM - 11:00 AM  
11:00 AM - 11:00 AM - 11:00 AM - 11:00 AM  
GOOD CANDIDATE FOR REPAIR  




Walls lined in 2019 w/ 175 mils of high-build epoxy. May require spot repair of existing coating.

16

# ROCK RIVER WATER RECLAMATION DISTRICT

## Manhole Inspection Form

Manhole ID: <u>120-017</u>	Inspector: <u>CS</u>	Date: <u>July 2, 2019</u>
Address/Location: <u>APPLEWOOD LN WEST EDGE OF TIMBER</u>		
Surface Cover: Asphalt <input type="checkbox"/> Concrete <input type="checkbox"/> Turf <input checked="" type="checkbox"/> Gravel <input type="checkbox"/> Other <input type="checkbox"/> Ponding: Yes <input type="checkbox"/> No <input checked="" type="checkbox"/>		

Lid / Cover:	Open Grate <input type="checkbox"/>	Sanitary Stamp <input checked="" type="checkbox"/>	Bolt-down <input checked="" type="checkbox"/>	Frame:	Cast Iron <input checked="" type="checkbox"/>	Good <input type="checkbox"/>
	Concealed Pickhole <input checked="" type="checkbox"/>	No Stamp <input type="checkbox"/>	Gasket <input checked="" type="checkbox"/>		Other <input type="checkbox"/>	Fair <input checked="" type="checkbox"/>
	Open Pickhole <input type="checkbox"/>	Other <input type="checkbox"/>	Low Profile <input type="checkbox"/>			Poor <input type="checkbox"/>

Adj. Rings:	Precast <input type="checkbox"/>	Good <input type="checkbox"/>	Precast <input checked="" type="checkbox"/>	Good <input type="checkbox"/>	Wall / Base:	Precast <input checked="" type="checkbox"/>	Good <input type="checkbox"/>
	Brick <input type="checkbox"/>	Fair <input type="checkbox"/>	Brick <input type="checkbox"/>	Fair <input checked="" type="checkbox"/>		Brick <input type="checkbox"/>	Fair <input checked="" type="checkbox"/>
Qty	Block <input type="checkbox"/>	Poor <input type="checkbox"/>	Block <input type="checkbox"/>	Poor <input type="checkbox"/>		Block <input type="checkbox"/>	Poor <input type="checkbox"/>
Size	Other <input type="checkbox"/>		Flat Top <input type="checkbox"/>			Other <input type="checkbox"/>	
	None <input checked="" type="checkbox"/>		Other <input type="checkbox"/>			Coating <input type="checkbox"/>	

Bench:	Conc. <input checked="" type="checkbox"/>	Flat <input type="checkbox"/>	Cast Iron <input checked="" type="checkbox"/>	Good <input type="checkbox"/>	Infiltr:	Low	Med	Heavy	None
	Block <input type="checkbox"/>	Half <input type="checkbox"/>	Plastic <input type="checkbox"/>	Fair <input checked="" type="checkbox"/>	Adj.	<input type="checkbox"/>	<input type="checkbox"/>	<input type="checkbox"/>	<input checked="" type="checkbox"/>
	Brick <input type="checkbox"/>	3/4 <input checked="" type="checkbox"/>	None <input type="checkbox"/>	Poor <input type="checkbox"/>	Cone	<input type="checkbox"/>	<input type="checkbox"/>	<input type="checkbox"/>	<input checked="" type="checkbox"/>
	Other <input type="checkbox"/>		1st < 30" from Rim	Yes <input checked="" type="checkbox"/> No <input type="checkbox"/>	Wall	<input checked="" type="checkbox"/>	<input type="checkbox"/>	<input type="checkbox"/>	<input type="checkbox"/>
	None <input type="checkbox"/>		Last < 24" from Bench	Yes <input checked="" type="checkbox"/> No <input type="checkbox"/>	Bench	<input checked="" type="checkbox"/>	<input type="checkbox"/>	<input type="checkbox"/>	<input type="checkbox"/>

GPS Rim Elev: <u>827.28</u>	MH Diameter: <u>4'</u>	Surcharge: Yes <input type="checkbox"/> No <input type="checkbox"/>
-----------------------------	------------------------	---

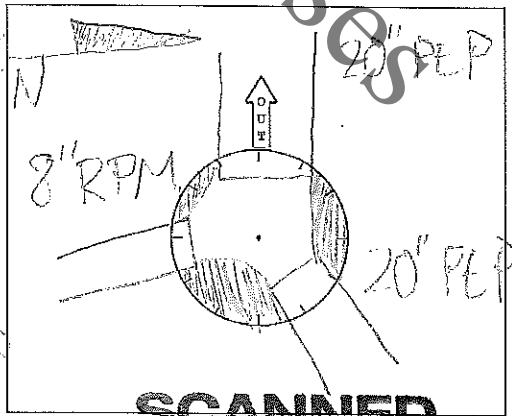
In MH 1 (Upstrm) <u>120-018</u>	Depth High: <u>10.81</u>	Elev: <u>816.47</u>	Depth Low: _____	Elev: _____
In MH 2 (Upstrm) <u>120-170</u>	Depth High: <u>10.38</u>	Elev: <u>816.90</u>	Depth Low: _____	Elev: _____
In MH 3 (Upstrm) _____	Depth High: _____	Elev: _____	Depth Low: _____	Elev: _____

Serv 1 Clock Pos: _____	Address: _____
Depth High: _____	Elev: _____ Depth Low: _____ Elev: _____
Serv 2 Clock Pos: _____	Address: _____
Depth High: _____	Elev: _____ Depth Low: _____ Elev: _____
Serv 3 Clock Pos: _____	Address: _____
Depth High: _____	Elev: _____ Depth Low: _____ Elev: _____

Out is considered 12:00 and service clock position shall be given from 12:00.			
Out MH 1 (Dwnstrm) <u>120-016</u>	Depth: <u>10.86</u>	Elev: <u>816.42</u>	
Out MH 2 (Dwnstrm) _____	Depth: _____	Elev: _____	

Metered <input type="checkbox"/>	Outside Drop <input type="checkbox"/>	Inside Drop <input type="checkbox"/>
----------------------------------	---------------------------------------	--------------------------------------

Comments: INV IN IS LEAKING AROUND PIPE  
AND ON BENCH. 1/2 IN. 200'S ON BENCH  
NO BOLTS IN MH 120. MORTAR JOINTS  
OFF WALLS ARE LAYING ON BENCH. NO BOLTS



SCANNED  
ENC'D JUL 09 2019

# ROCK RIVER WATER RECLAMATION DISTRICT

17

## Manhole Inspection Form

<b>Manhole ID:</b> 120-018	<b>Inspector:</b> CB	<b>Date:</b> July 2, 2019
<b>Address/Location:</b> NORTH EDGE OF TIMBER SOUTH OF APPLEWOOD LN		
<b>Surface Cover:</b> Asphalt <input type="checkbox"/> Concrete <input type="checkbox"/> Turf <input checked="" type="checkbox"/> Gravel <input type="checkbox"/> Other <input type="checkbox"/> <b>Ponding:</b> Yes <input type="checkbox"/> No <input checked="" type="checkbox"/>		

<b>Lid / Cover:</b>	Open Grate <input type="checkbox"/>	Sanitary Stamp <input checked="" type="checkbox"/>	Bolt-down <input checked="" type="checkbox"/>	<b>Frame:</b>	Cast Iron <input checked="" type="checkbox"/>	Good <input type="checkbox"/>
	Concealed Pickhole <input checked="" type="checkbox"/>	No Stamp <input type="checkbox"/>	Gasket <input checked="" type="checkbox"/>		Other <input type="checkbox"/>	Fair <input type="checkbox"/>
	Open Pickhole <input type="checkbox"/>	Other <input type="checkbox"/>	Low Profile <input type="checkbox"/>			Poor <input checked="" type="checkbox"/>

<b>Adj. Rings:</b>	Precast <input checked="" type="checkbox"/>	Good <input type="checkbox"/>	<b>Cone:</b>	Precast <input checked="" type="checkbox"/>	Good <input type="checkbox"/>	<b>Wall / Base:</b>	Precast <input checked="" type="checkbox"/>	Good <input type="checkbox"/>
	Brick <input type="checkbox"/>	Fair <input checked="" type="checkbox"/>		Brick <input type="checkbox"/>	Fair <input checked="" type="checkbox"/>		Brick <input type="checkbox"/>	Fair <input type="checkbox"/>
	Block <input type="checkbox"/>	Poor <input type="checkbox"/>		Block <input type="checkbox"/>	Poor <input type="checkbox"/>		Block <input type="checkbox"/>	Poor <input checked="" type="checkbox"/>
	Other <input type="checkbox"/>			Flat Top <input type="checkbox"/>			Other <input type="checkbox"/>	
Qty	Size						Coating <input type="checkbox"/>	
3	4"							

<b>Bench:</b>	Conc. <input checked="" type="checkbox"/>	Flat <input type="checkbox"/>	<b>Steps:</b>	Cast Iron <input checked="" type="checkbox"/>	Good <input type="checkbox"/>	<b>Infiltr:</b>	Low	Med	Heavy	None	
	Block <input type="checkbox"/>	Half <input type="checkbox"/>		Plastic <input type="checkbox"/>	Fair <input checked="" type="checkbox"/>		Adj.	<input type="checkbox"/>	<input type="checkbox"/>	<input type="checkbox"/>	<input checked="" type="checkbox"/>
	Brick <input type="checkbox"/>	3/4 <input checked="" type="checkbox"/>		None <input type="checkbox"/>	Poor <input type="checkbox"/>		Cone	<input type="checkbox"/>	<input type="checkbox"/>	<input type="checkbox"/>	<input checked="" type="checkbox"/>
	Other <input type="checkbox"/>			1 <sup>st</sup> < 30" from Rim	Yes <input type="checkbox"/> No <input checked="" type="checkbox"/>		Wall	<input checked="" type="checkbox"/>	<input type="checkbox"/>	<input type="checkbox"/>	<input type="checkbox"/>
	None <input type="checkbox"/>			Last < 24" from Bench	Yes <input checked="" type="checkbox"/> No <input type="checkbox"/>		Bench	<input checked="" type="checkbox"/>	<input type="checkbox"/>	<input type="checkbox"/>	<input type="checkbox"/>

<b>GPS Rim Elev:</b> 827.39	<b>MH Diameter:</b> 41	<b>Surcharge:</b> Yes <input type="checkbox"/> No <input checked="" type="checkbox"/>
-----------------------------	------------------------	---

In MH 1 (Upstrm)	120-019	Depth High:	8.86	Elev:	818.53	Depth Low:		Elev:	
In MH 2 (Upstrm)	120-138	Depth High:	9.21	Elev:	819.18	Depth Low:		Elev:	
In MH 3 (Upstrm)		Depth High:		Elev:		Depth Low:		Elev:	

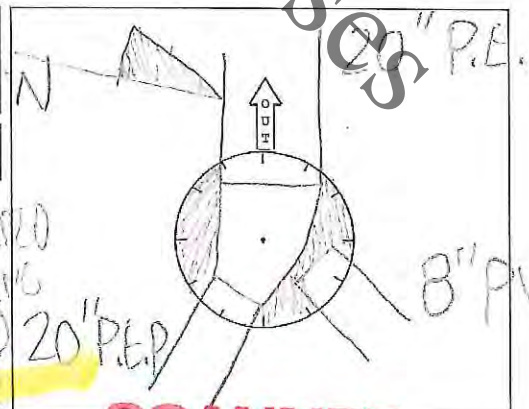
Serv 1 Clock Pos:	Address:	
Depth High:	Elev:	Depth Low: Elev:
Serv 2 Clock Pos:	Address:	
Depth High:	Elev:	Depth Low: Elev:
Serv 3 Clock Pos:	Address:	
Depth High:	Elev:	Depth Low: Elev:

Out is considered 12:00 and service clock position shall be given from 12:00.

Out MH 1 (Dwnstrm)	120-017	Depth:	8.90	Elev:	818.49
Out MH 2 (Dwnstrm)		Depth:		Elev:	

Metered <input type="checkbox"/>	Outside Drop <input type="checkbox"/>	Inside Drop <input type="checkbox"/>
----------------------------------	---------------------------------------	--------------------------------------

**Comments:** LID AND FRAME BADLY DEGRADED  
WALL DOWN BY BENCH AND BENCH LEAKING  
INTEGRATION WALL MORTAR SHEDDING AND  
LAYING ON BENCH (GOOD) CAN BE USED FOR



SCANNED  
END JUL 09 2019



# ROCK RIVER WATER RECLAMATION DISTRICT

18

## Manhole Inspection Form

Manhole ID: 120-019 Inspector: CB Date: July 2, 2019  
 Address/Location: TIMBER SOUTH OF APPLEWOOD LN  
 Surface Cover: Asphalt ☐ Concrete ☐ Turf ☒ Gravel ☐ Other ☐ Ponding: Yes ☐ No ☒

Lid / Cover: Open Grate ☐ Sanitary Stamp ☒ Bolt-down ☒  
 Concealed Pickhole ☒ No Stamp ☐ Gasket ☒  
 Open Pickhole ☐ Other ☐ Low Profile ☐  
 Frame: Cast Iron ☒ Good ☐  
 Other ☐ Fair ☒  
 Poor ☐

Adj. Rings: Precast ☒ Good ☐  
 Brick ☐ Fair ☒  
 Block ☐ Poor ☐  
 Other ☐  
 None ☐  
 Qty 3 Size 4"  
 Cone: Precast ☒ Good ☐  
 Brick ☐ Fair ☒  
 Block ☐ Poor ☐  
 Flat Top ☐  
 Other ☐  
 Wall / Base: Precast ☒ Good ☐  
 Brick ☐ Fair ☐  
 Block ☐ Poor ☒  
 Other ☐  
 Coating ☐

Bench: Conc. ☒ Flat ☐  
 Block ☐ Half ☐  
 Brick ☐ 3/4 ☒  
 Other ☐  
 None ☐  
 Steps: Cast Iron ☒ Good ☐  
 Plastic ☐ Fair ☒  
 None ☐ Poor ☐  
 1<sup>st</sup> < 30" from Rim Yes ☒ No ☐  
 Last < 24" from Bench Yes ☒ No ☐  
 Infiltr: Low Med Heavy None  
 Adj. ☐ ☐ ☐ ☒  
 Cone ☐ ☐ ☐ ☒  
 Wall ☐ ☒ ☐ ☐  
 Bench ☒ ☐ ☐ ☐

GPS Rim Elev: 828.48 MH Diameter: 4 Surchage: Yes ☒ No ☐

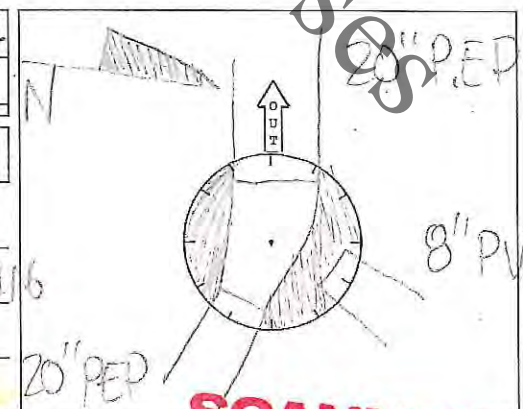
In MH 1 (Upstrm) 120-021 Depth High: 8.55 Elev: 819.93 Depth Low: \_\_\_\_\_ Elev: \_\_\_\_\_  
 In MH 2 (Upstrm) 120-150 Depth High: 7.92 Elev: 818.86 Depth Low: \_\_\_\_\_ Elev: \_\_\_\_\_  
 In MH 3 (Upstrm) \_\_\_\_\_ Depth High: \_\_\_\_\_ Elev: \_\_\_\_\_ Depth Low: \_\_\_\_\_ Elev: \_\_\_\_\_

Serv 1 Clock Pos: \_\_\_\_\_ Address: \_\_\_\_\_  
 Depth High: \_\_\_\_\_ Elev: \_\_\_\_\_ Depth Low: \_\_\_\_\_ Elev: \_\_\_\_\_  
 Serv 2 Clock Pos: \_\_\_\_\_ Address: \_\_\_\_\_  
 Depth High: \_\_\_\_\_ Elev: \_\_\_\_\_ Depth Low: \_\_\_\_\_ Elev: \_\_\_\_\_  
 Serv 3 Clock Pos: \_\_\_\_\_ Address: \_\_\_\_\_  
 Depth High: \_\_\_\_\_ Elev: \_\_\_\_\_ Depth Low: \_\_\_\_\_ Elev: \_\_\_\_\_

Out is considered 12:00 and service clock position shall be given from 12:00.  
 Out MH 1 (Dwnstrm) 120-018 Depth: 8.76 Elev: 819.72  
 Out MH 2 (Dwnstrm) \_\_\_\_\_ Depth: \_\_\_\_\_ Elev: \_\_\_\_\_

Metered ☐ Outside Drop ☐ Inside Drop ☐

Comments: EVIDENCE OF SURCHARGE ON STEPS.  
MH LEAKING EVERYWHERE MORIAC SLOUGHING  
OFF WALLS AND LEAKING ON BENCH.  
GOOD CONDUIT FOR REPLACEMENT



SCANNED  
 INTO JUL 09 2019



# ROCK RIVER WATER RECLAMATION DISTRICT

19

## Manhole Inspection Form

Manhole ID: 120-021 Inspector: CB Date: July 2, 2019  
 Address/Location: BEHIND 3203 MONTLAKE  
 Surface Cover: Asphalt ☐ Concrete ☐ Turf ☒ Gravel ☐ Other ☐ Ponding: Yes ☐ No ☒

Lid: Open Grate ☐ Sanitary Stamp ☒ Bolt-down ☒  
 Cover: Concealed Pickhole ☒ No Stamp ☐ Gasket ☒  
 Open Pickhole ☐ Other ☐ Low Profile ☐  
 Frame: Cast Iron ☒ Good ☐  
 Other ☐ Fair ☒  
 Poor ☐

Adj. Rings: Precast ☐ Good ☐  
 Brick ☒ Fair ☐  
 Block ☒ Poor ☐  
 Other ☐  
 None ☒  
 Qty:   
 Size:   
 Cone: Precast ☒ Good ☐  
 Brick ☐ Fair ☒  
 Block ☐ Poor ☐  
 Flat Top ☐  
 Other ☐  
 Wall / Base: Precast ☒ Good ☐  
 Brick ☐ Fair ☐  
 Block ☐ Poor ☒  
 Other ☐  
 Coating ☐

Bench: Conc. ☒ Flat ☐  
 Block ☐ Half ☐  
 Brick ☐ 3/4 ☒  
 Other ☐  
 None ☐  
 Steps: Cast Iron ☒ Good ☐  
 Plastic ☐ Fair ☒  
 None ☐ Poor ☐  
 1st < 30" from Rim Yes ☒ No ☐  
 Last < 24" from Bench Yes ☒ No ☐  
 Infiltrate: Low Med Heavy None  
 Adj. ☐ ☐ ☐ ☒  
 Cone ☐ ☐ ☐ ☒  
 Wall ☒ ☐ ☐ ☐  
 Bench ☒ ☐ ☐ ☐

GPS Rim Elev: 833.62 MH Diameter: 4' Surchage: Yes ☐ No ☒

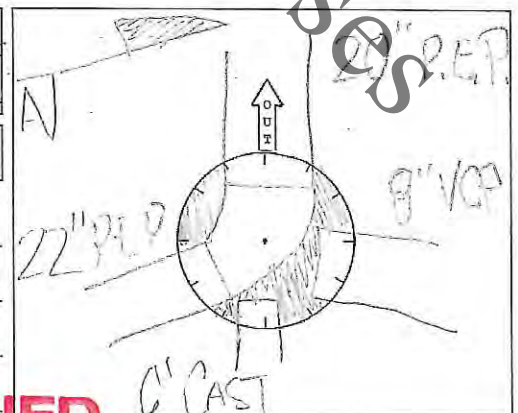
In MH 1 (Upstrm) 120-022 Depth High: 13.65 Elev: 819.97 Depth Low:        Elev:         
 In MH 2 (Upstrm) 120-023 Depth High: 235 Elev: 821.21 Depth Low:        Elev:         
 In MH 3 (Upstrm)        Depth High:        Elev:        Depth Low:        Elev:       

Serv 1 Clock Pos: 6 Address: 3203 MONTLAKE DR  
 Depth High: 10.27 Elev: 823.35 Depth Low:        Elev:         
 Serv 2 Clock Pos:        Address:         
 Depth High:        Elev:        Depth Low:        Elev:         
 Serv 3 Clock Pos:        Address:         
 Depth High:        Elev:        Depth Low:        Elev:       

Out is considered 12:00 and service clock position shall be given from 12:00.  
 Out MH 1 (Dwnstrm) 120-019 Depth: 13.70 Elev: 819.92  
 Out MH 2 (Dwnstrm)        Depth:        Elev:       

Metered ☐ Outside Drop ☐ Inside Drop ☐

Comments: BOTTOM SECTION OF MANHOLE IS  
LEAKING INFILTRATION @ BENCH AND WALL  
AREA, NO BOLTS IN LID, LIGHT ROOTS  
ON BENCHES.



# ROCK RIVER WATER RECLAMATION DISTRICT

20

## Manhole Inspection Form

Manhole ID: 12A-57A Inspector: CB Date: July 2, 2019  
 Address/Location: 5588 SPRING BROOK ROAD  
 Surface Cover: Asphalt ☐ Concrete ☐ Turf ☒ Gravel ☐ Other ☐ Ponding: Yes ☐ No ☒

Lid / Cover: Open Grate ☐ Sanitary Stamp ☒ Bolt-down ☒  
 Concealed Pickhole ☒ No Stamp ☐ Gasket ☒  
 Open Pickhole ☐ Other ☐ Low Profile ☐  
 Frame: Cast Iron ☒ Good ☐  
 Other ☐ Fair ☒  
 Poor ☐

Adj. Rings: Precast ☒ Good ☐  
 Brick ☐ Fair ☒  
 Block ☐ Poor ☐  
 Other ☐  
 None ☐  
 Qty 1 Size 48"  
 Cone: Precast ☒ Good ☐  
 Brick ☐ Fair ☒  
 Block ☐ Poor ☐  
 Flat Top ☐  
 Other ☐  
 Wall / Base: Precast ☒ Good ☐  
 Brick ☐ Fair ☒  
 Block ☐ Poor ☐  
 Other ☐  
 Coating ☐

Bench: Conc. ☒ Flat ☐  
 Block ☐ Half ☐  
 Brick ☐ 3/4 ☒  
 Other ☐  
 None ☐  
 Steps: Cast Iron ☒ Good ☐  
 Plastic ☐ Fair ☒  
 None ☐ Poor ☐  
 1st < 30" from Rim Yes ☒ No ☐  
 Last < 24" from Bench Yes ☒ No ☐  
 Infiltr: Low Med Heavy None  
 Adj. ☐ ☐ ☐ ☒  
 Cone ☐ ☐ ☐ ☒  
 Wall ☒ ☐ ☐ ☐  
 Bench ☒ ☐ ☐ ☐

GPS Rim Elev: 839.54 MH Diameter: 5' Surcharge: Yes ☐ No ☒

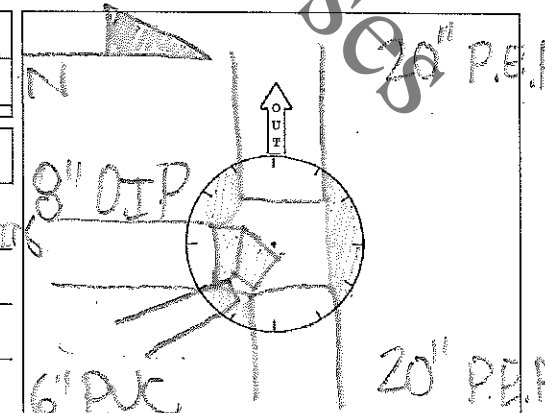
In MH 1 (Upstrm) 120-266 Depth High: 14.49 Elev: 825.05 Depth Low: \_\_\_\_\_ Elev: \_\_\_\_\_  
 In MH 2 (Upstrm) 120-57B Depth High: 6.60 Elev: 832.94 Depth Low: \_\_\_\_\_ Elev: \_\_\_\_\_  
 In MH 3 (Upstrm) \_\_\_\_\_ Depth High: \_\_\_\_\_ Elev: \_\_\_\_\_ Depth Low: \_\_\_\_\_ Elev: \_\_\_\_\_

Serv 1 Clock Pos: 8 Address: 5588 SPRING BROOK ROAD  
 Depth High: 3.95 Elev: 835.59 Depth Low: \_\_\_\_\_ Elev: \_\_\_\_\_  
 Serv 2 Clock Pos: \_\_\_\_\_ Address: \_\_\_\_\_  
 Depth High: \_\_\_\_\_ Elev: \_\_\_\_\_ Depth Low: \_\_\_\_\_ Elev: \_\_\_\_\_  
 Serv 3 Clock Pos: \_\_\_\_\_ Address: \_\_\_\_\_  
 Depth High: \_\_\_\_\_ Elev: \_\_\_\_\_ Depth Low: \_\_\_\_\_ Elev: \_\_\_\_\_

Out is considered 12:00 and service clock position shall be given from 12:00.  
 Out MH 1 (Dwnstrm) 120-057 Depth: 14.53 Elev: 825.01  
 Out MH 2 (Dwnstrm) \_\_\_\_\_ Depth: \_\_\_\_\_ Elev: \_\_\_\_\_

Metered ☐ Outside Drop ☐ Inside Drop ☒

Comments: OPENING AROUND 8" IN IS LEAKING  
AROUND PIPE AND BENCH APPEARS TO  
HAVE SLIGHT LEAK ALSO. SHIFTED  
RINGS ± 2"-3". NO BOLTS IN LID.



## ROCK RIVER WATER RECLAMATION DISTRICT

## Manhole Inspection Form

Manhole ID: <u>120-088</u>	Inspector: <u>CB</u>	Date: <u>July 2, 2019</u>
Address/Location: <u>5928 CREEK SIDE LANE</u>		
Surface Cover: Asphalt <input type="checkbox"/> Concrete <input type="checkbox"/> Turf <input checked="" type="checkbox"/> Gravel <input type="checkbox"/> Other <input type="checkbox"/> Ponding: Yes <input type="checkbox"/> No <input checked="" type="checkbox"/>		

Lid / Cover:	Open Grate <input type="checkbox"/>	Sanitary Stamp <input checked="" type="checkbox"/>	Bolt-down <input type="checkbox"/>	Frame:	Cast Iron <input checked="" type="checkbox"/>	Good <input type="checkbox"/>
	Concealed Pickhole <input checked="" type="checkbox"/>	No Stamp <input type="checkbox"/>	Gasket <input checked="" type="checkbox"/>		Other <input type="checkbox"/>	Fair <input checked="" type="checkbox"/>
	Open Pickhole <input type="checkbox"/>	Other <input type="checkbox"/>	Low Profile <input type="checkbox"/>			Poor <input type="checkbox"/>

Adj. Rings:	Precast <input checked="" type="checkbox"/>	Good <input type="checkbox"/>		Precast <input checked="" type="checkbox"/>	Good <input type="checkbox"/>		Precast <input checked="" type="checkbox"/>	Good <input type="checkbox"/>
	Brick <input type="checkbox"/>	Fair <input checked="" type="checkbox"/>		Brick <input type="checkbox"/>	Fair <input checked="" type="checkbox"/>		Brick <input type="checkbox"/>	Fair <input checked="" type="checkbox"/>
	Block <input type="checkbox"/>	Poor <input type="checkbox"/>		Block <input type="checkbox"/>	Poor <input type="checkbox"/>		Block <input type="checkbox"/>	Poor <input type="checkbox"/>
Qty	Size		Cone:	Flat Top <input type="checkbox"/>		Wall / Base:	Other <input type="checkbox"/>	
1	8"			Other <input type="checkbox"/>			Coating <input type="checkbox"/>	
1	4"							

Bench:	Conc. <input checked="" type="checkbox"/>	Flat <input type="checkbox"/>	Cast Iron <input checked="" type="checkbox"/>	Good <input type="checkbox"/>	Infiltr:	Low	Med	Heavy	None
	Block <input type="checkbox"/>	Half <input type="checkbox"/>	Plastic <input type="checkbox"/>	Fair <input checked="" type="checkbox"/>	Adj.	<input type="checkbox"/>	<input type="checkbox"/>	<input type="checkbox"/>	<input checked="" type="checkbox"/>
	Brick <input type="checkbox"/>	3/4 <input checked="" type="checkbox"/>	None <input type="checkbox"/>	Poor <input type="checkbox"/>	Cone	<input checked="" type="checkbox"/>	<input type="checkbox"/>	<input type="checkbox"/>	<input type="checkbox"/>
	Other <input type="checkbox"/>		1st < 30" from Rim	Yes <input type="checkbox"/> No <input checked="" type="checkbox"/>	Wall	<input type="checkbox"/>	<input type="checkbox"/>	<input type="checkbox"/>	<input checked="" type="checkbox"/>
	None <input type="checkbox"/>		Last < 24" from Bench	Yes <input checked="" type="checkbox"/> No <input type="checkbox"/>	Bench	<input checked="" type="checkbox"/>	<input type="checkbox"/>	<input type="checkbox"/>	<input type="checkbox"/>

GPS Rim Elev: <u>845.23</u>	MH Diameter: <u>4"</u>	Surcharge: Yes <input type="checkbox"/> No <input checked="" type="checkbox"/>
-----------------------------	------------------------	--

In MH 1 (Upstrm) <u>120-089</u>	Depth High: <u>9.78</u>	Elev: <u>835.45</u>	Depth Low: _____	Elev: _____
In MH 2 (Upstrm) _____	Depth High: _____	Elev: _____	Depth Low: _____	Elev: _____
In MH 3 (Upstrm) _____	Depth High: _____	Elev: _____	Depth Low: _____	Elev: _____

Serv 1 Clock Pos: <u>2</u>	Address: <u>5910 CREEK SIDE LANE</u>
Depth High: <u>9.20</u>	Elev: <u>836.03</u>
Serv 2 Clock Pos: <u>4</u>	Address: <u>5928 CREEK SIDE LANE</u>
Depth High: <u>9.20</u>	Elev: <u>836.03</u>
Serv 3 Clock Pos: <u>8</u>	Address: <u>5933 CREEK SIDE LANE</u>
Depth High: <u>9.22</u>	Elev: <u>836.01</u>

Out is considered 12:00 and service clock position shall be given from 12:00.			
Out MH 1 (Dwnstrm) <u>120-088A</u>	Depth: <u>9.8"</u>	Elev: <u>835.41</u>	
Out MH 2 (Dwnstrm) _____	Depth: _____	Elev: _____	

Metered <input type="checkbox"/>	Outside Drop <input type="checkbox"/>	Inside Drop <input type="checkbox"/>
Comments: <u>NON-LOCKING LID, 1ST STEP 2.9' DOWN</u>		
<u>INN IN APPEARS TO BE LEAKING SLIGHTLY</u>		
<u>LIGHT ROOTS IN CONE OF MH</u>		

SCANNED

ENT'D JUL 11 11 09 2019



# ROCK RIVER WATER RECLAMATION DISTRICT

22

## Manhole Inspection Form

Manhole ID: <u>120-089</u>	Inspector: <u>CB</u>	Date: <u>July 2, 2019</u>
Address/Location: <u>5951 CREEKSIDE LANE</u>		
Surface Cover: Asphalt <input type="checkbox"/> Concrete <input type="checkbox"/> Turf <input checked="" type="checkbox"/> Gravel <input type="checkbox"/> Other <input type="checkbox"/> Ponding: Yes <input type="checkbox"/> No <input checked="" type="checkbox"/>		

Lid / Cover:	Open Grate <input type="checkbox"/>	Sanitary Stamp <input checked="" type="checkbox"/>	Bolt-down <input type="checkbox"/>	Frame:	Cast Iron <input checked="" type="checkbox"/>	Good <input type="checkbox"/>
	Concealed Pickhole <input checked="" type="checkbox"/>	No Stamp <input type="checkbox"/>	Gasket <input checked="" type="checkbox"/>		Other <input type="checkbox"/>	Fair <input type="checkbox"/>
	Open Pickhole <input type="checkbox"/>	Other <input type="checkbox"/>	Low Profile <input type="checkbox"/>			Poor <input checked="" type="checkbox"/>

Adj. Rings:	Precast <input checked="" type="checkbox"/>	Good <input type="checkbox"/>	Cone:	Precast <input checked="" type="checkbox"/>	Good <input type="checkbox"/>	Wall / Base:	Precast <input checked="" type="checkbox"/>	Good <input type="checkbox"/>
	Brick <input type="checkbox"/>	Fair <input checked="" type="checkbox"/>		Brick <input type="checkbox"/>	Fair <input checked="" type="checkbox"/>		Brick <input type="checkbox"/>	Fair <input type="checkbox"/>
Qty	Block <input type="checkbox"/>	Poor <input type="checkbox"/>		Block <input type="checkbox"/>	Poor <input checked="" type="checkbox"/>		Block <input type="checkbox"/>	Poor <input checked="" type="checkbox"/>
Size	Other <input type="checkbox"/>			Flat Top <input type="checkbox"/>			Other <input type="checkbox"/>	
<u>2</u>	None <input type="checkbox"/>			Other <input type="checkbox"/>			Coating <input type="checkbox"/>	
<u>8"</u>								

Bench:	Conc. <input checked="" type="checkbox"/>	Flat <input type="checkbox"/>	Steps:	Cast Iron <input checked="" type="checkbox"/>	Good <input type="checkbox"/>	Infiltr:	Low	Med	Heavy	None
	Block <input type="checkbox"/>	Half <input type="checkbox"/>		Plastic <input checked="" type="checkbox"/>	Fair <input checked="" type="checkbox"/>	Adj.	<input type="checkbox"/>	<input type="checkbox"/>	<input type="checkbox"/>	<input checked="" type="checkbox"/>
	Brick <input type="checkbox"/>	3/4 <input checked="" type="checkbox"/>		None <input type="checkbox"/>	Poor <input type="checkbox"/>	Cone	<input type="checkbox"/>	<input type="checkbox"/>	<input type="checkbox"/>	<input checked="" type="checkbox"/>
	Other <input type="checkbox"/>		1st < 30" from Rim	Yes <input type="checkbox"/> No <input checked="" type="checkbox"/>		Wall	<input type="checkbox"/>	<input checked="" type="checkbox"/>	<input type="checkbox"/>	<input type="checkbox"/>
	None <input type="checkbox"/>		Last < 24" from Bench	Yes <input checked="" type="checkbox"/> No <input type="checkbox"/>		Bench	<input type="checkbox"/>	<input checked="" type="checkbox"/>	<input type="checkbox"/>	<input type="checkbox"/>

GPS Rim Elev: <u>846.24</u>	MH Diameter: <u>4'</u>	Surcharge: Yes <input type="checkbox"/> No <input checked="" type="checkbox"/>
-----------------------------	------------------------	--

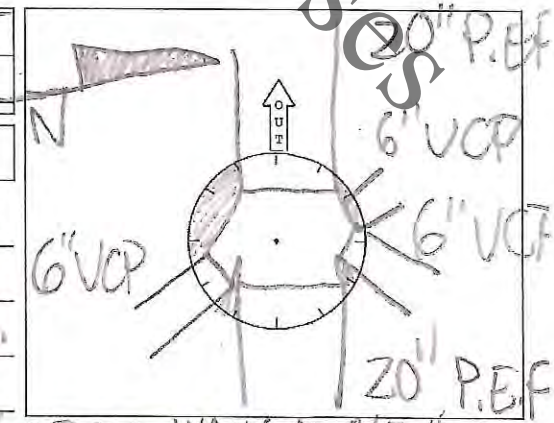
In MH 1 (Upstrm) <u>120-263</u>	Depth High: <u>10.53</u>	Elev: <u>835.71</u>	Depth Low: _____	Elev: _____
In MH 2 (Upstrm) _____	Depth High: _____	Elev: _____	Depth Low: _____	Elev: _____
In MH 3 (Upstrm) _____	Depth High: _____	Elev: _____	Depth Low: _____	Elev: _____

Serv 1 Clock Pos: <u>4</u>	Address: <u>5968 CREEKSIDE LANE</u>	Depth High: <u>9.48</u>	Elev: <u>836.76</u>	Depth Low: _____	Elev: _____
Serv 2 Clock Pos: <u>8</u>	Address: <u>5951 CREEKSIDE LANE</u>	Depth High: <u>10.57</u>	Elev: <u>835.67</u>	Depth Low: _____	Elev: _____
Serv 3 Clock Pos: <u>2</u>	Address: <u>5944 CREEKSIDE LANE</u>	Depth High: <u>9.45</u>	Elev: <u>836.79</u>	Depth Low: _____	Elev: _____

Out is considered 12:00 and service clock position shall be given from 12:00.					
Out MH 1 (Dwnstrm) <u>120-089</u>	Depth: <u>10.59</u>	Elev: <u>835.65</u>			
Out MH 2 (Dwnstrm) _____	Depth: _____	Elev: _____			

Metered <input type="checkbox"/>	Outside Drop <input type="checkbox"/>	Inside Drop <input type="checkbox"/>
----------------------------------	---------------------------------------	--------------------------------------

Comments: FRAME BADLY DELAMINATING, WALLS DELAMINATING FROM A BAD MORTAR JOB. IN OUT LEAKING MEDIUM INFILTRATION. SERVICE TO 5944 RUNS CONTINUALLY AND APPEARS TO BE SET UP TO AN INJECTOR PUMP W/ SURGES. WALLS LEAKING EVERY



SCANNED  
JUL 09 2019



# ROCK RIVER WATER RECLAMATION DISTRICT

23

## Manhole Inspection Form

Manhole ID: <u>151-300</u>	Inspector: <u>CB</u>	Date: <u>July 1, 2019</u>
Address/Location: <u>EAST R.O.W of N. MULFORD SOUTH OF SPRING BROOK INT.</u>		
Surface Cover: Asphalt <input type="checkbox"/> Concrete <input type="checkbox"/> Turf <input checked="" type="checkbox"/> Gravel <input type="checkbox"/> Other <input type="checkbox"/> Ponding: Yes <input type="checkbox"/> No <input checked="" type="checkbox"/>		

Lid / Cover:	Open Grate <input type="checkbox"/>	Sanitary Stamp <input checked="" type="checkbox"/>	Bolt-down <input type="checkbox"/>	Frame:	Cast Iron <input checked="" type="checkbox"/>	Good <input type="checkbox"/>
	Concealed Pickhole <input checked="" type="checkbox"/>	No Stamp <input type="checkbox"/>	Gasket <input checked="" type="checkbox"/>		Other <input type="checkbox"/>	Fair <input checked="" type="checkbox"/>
	Open Pickhole <input type="checkbox"/>	Other <input type="checkbox"/>	Low Profile <input type="checkbox"/>			Poor <input type="checkbox"/>

Adj. Rings:	Precast <input type="checkbox"/>	Good <input type="checkbox"/>		Precast <input checked="" type="checkbox"/>	Good <input type="checkbox"/>		Precast <input checked="" type="checkbox"/>	Good <input type="checkbox"/>
	Brick <input type="checkbox"/>	Fair <input type="checkbox"/>		Brick <input type="checkbox"/>	Fair <input checked="" type="checkbox"/>		Brick <input type="checkbox"/>	Fair <input checked="" type="checkbox"/>
Qty Size	Block <input type="checkbox"/>	Poor <input type="checkbox"/>	Cone:	Block <input type="checkbox"/>	Poor <input type="checkbox"/>	Wall / Base:	Block <input type="checkbox"/>	Poor <input type="checkbox"/>
	Other <input type="checkbox"/>			Flat Top <input type="checkbox"/>			Other <input type="checkbox"/>	
	None <input checked="" type="checkbox"/>			Other <input type="checkbox"/>			Coating <input type="checkbox"/>	

Bench:	Conc. <input checked="" type="checkbox"/>	Flat <input type="checkbox"/>	Steps:	Cast Iron <input type="checkbox"/>	Good <input checked="" type="checkbox"/>	Infiltr:	Low	Med	Heavy	None
	Block <input type="checkbox"/>	Half <input type="checkbox"/>		Plastic <input checked="" type="checkbox"/>	Fair <input type="checkbox"/>	Adj.	<input type="checkbox"/>	<input type="checkbox"/>	<input type="checkbox"/>	<input checked="" type="checkbox"/>
	Brick <input type="checkbox"/>	3/4 <input checked="" type="checkbox"/>		None <input type="checkbox"/>	Poor <input type="checkbox"/>	Cone	<input type="checkbox"/>	<input type="checkbox"/>	<input type="checkbox"/>	<input checked="" type="checkbox"/>
	Other <input type="checkbox"/>		1 <sup>st</sup> < 30" from Rim	Yes <input checked="" type="checkbox"/>	No <input type="checkbox"/>	Wall	<input checked="" type="checkbox"/>	<input type="checkbox"/>	<input type="checkbox"/>	<input type="checkbox"/>
	None <input type="checkbox"/>		Last < 24" from Bench	Yes <input checked="" type="checkbox"/>	No <input type="checkbox"/>	Bench	<input checked="" type="checkbox"/>	<input type="checkbox"/>	<input type="checkbox"/>	<input type="checkbox"/>

GPS Rim Elev: <u>845.15</u>	MH Diameter: <u>4</u>	Surcharge: Yes <input type="checkbox"/> No <input checked="" type="checkbox"/>
-----------------------------	-----------------------	--

In MH 1 (Upstrm) <u>151-001</u>	Depth High: <u>7.07</u>	Elev: <u>838.11</u>	Depth Low: _____	Elev: _____
In MH 2 (Upstrm) _____	Depth High: _____	Elev: _____	Depth Low: _____	Elev: _____
In MH 3 (Upstrm) _____	Depth High: _____	Elev: _____	Depth Low: _____	Elev: _____

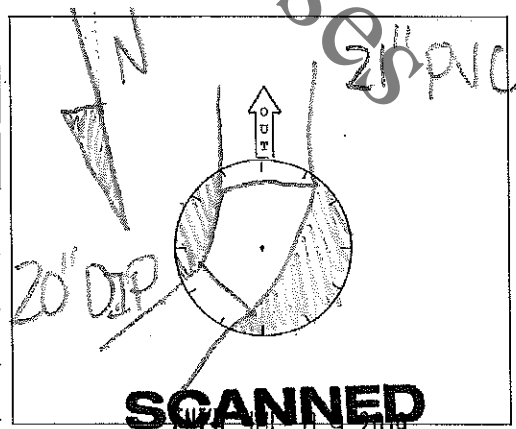
Serv 1 Clock Pos: _____	Address: _____
Depth High: _____	Elev: _____ Depth Low: _____ Elev: _____
Serv 2 Clock Pos: _____	Address: _____
Depth High: _____	Elev: _____ Depth Low: _____ Elev: _____
Serv 3 Clock Pos: _____	Address: _____
Depth High: _____	Elev: _____ Depth Low: _____ Elev: _____

Out is considered 12:00 and service clock position shall be given from 12:00.

Out MH 1 (Dwnstrm) <u>120-265</u>	Depth: <u>7.08</u>	Elev: <u>838.07</u>
Out MH 2 (Dwnstrm) _____	Depth: _____	Elev: _____

Metered <input type="checkbox"/>	Outside Drop <input type="checkbox"/>	Inside Drop <input type="checkbox"/>
----------------------------------	---------------------------------------	--------------------------------------

Comments: WALL IS LEAKING INFILTRATION W/ MINERAL DEPOSITS EVIDENT ALL OVER WALL BENCH LEAKING @ JAIL IN



SCANNED  
JUL 03 2019

# ROCK RIVER WATER RECLAMATION DISTRICT

24

## Manhole Inspection Form

Manhole ID: 151-006 Inspector: CB Date: July 1, 2019

Address/Location: RVC CAMPUS S.W. ON CLII

Surface Cover: Asphalt ☒ Concrete ☐ Turf ☐ Gravel ☐ Other ☐ Ponding: Yes ☐ No ☒

Lid / Cover:	Open Grate <input type="checkbox"/>	Sanitary Stamp <input checked="" type="checkbox"/>	Bolt-down <input checked="" type="checkbox"/>	Frame:	Cast Iron <input checked="" type="checkbox"/>	Good <input type="checkbox"/>
	Concealed Pickhole <input checked="" type="checkbox"/>	No Stamp <input type="checkbox"/>	Gasket <input checked="" type="checkbox"/>		Other <input type="checkbox"/>	Fair <input checked="" type="checkbox"/>
	Open Pickhole <input type="checkbox"/>	Other <input type="checkbox"/>	Low Profile <input type="checkbox"/>			Poor <input type="checkbox"/>

Adj. Rings:	Precast <input checked="" type="checkbox"/>	Good <input type="checkbox"/>	Cone:	Precast <input checked="" type="checkbox"/>	Good <input type="checkbox"/>	Wall / Base:	Precast <input checked="" type="checkbox"/>	Good <input type="checkbox"/>
	Brick <input type="checkbox"/>	Fair <input checked="" type="checkbox"/>		Brick <input type="checkbox"/>	Fair <input checked="" type="checkbox"/>		Brick <input type="checkbox"/>	Fair <input checked="" type="checkbox"/>
	Block <input type="checkbox"/>	Poor <input type="checkbox"/>		Block <input type="checkbox"/>	Poor <input type="checkbox"/>		Block <input type="checkbox"/>	Poor <input type="checkbox"/>
	Other <input type="checkbox"/>			Flat Top <input type="checkbox"/>			Other <input type="checkbox"/>	
	None <input type="checkbox"/>			Other <input type="checkbox"/>			Coating <input type="checkbox"/>	
Qty	Size							
1	4"							

Bench:	Conc. <input checked="" type="checkbox"/>	Flat <input type="checkbox"/>	Steps:	Cast Iron <input checked="" type="checkbox"/>	Good <input type="checkbox"/>	Infiltr:	Low	Med	Heavy	None	
	Block <input type="checkbox"/>	Half <input type="checkbox"/>		Plastic <input type="checkbox"/>	Fair <input checked="" type="checkbox"/>		Adj.	<input type="checkbox"/>	<input type="checkbox"/>	<input type="checkbox"/>	<input checked="" type="checkbox"/>
	Brick <input type="checkbox"/>	3/4 <input checked="" type="checkbox"/>		None <input type="checkbox"/>	Poor <input type="checkbox"/>		Cone	<input type="checkbox"/>	<input type="checkbox"/>	<input type="checkbox"/>	<input checked="" type="checkbox"/>
	Other <input type="checkbox"/>						Wall	<input checked="" type="checkbox"/>	<input type="checkbox"/>	<input type="checkbox"/>	<input type="checkbox"/>
	None <input type="checkbox"/>						Bench	<input type="checkbox"/>	<input type="checkbox"/>	<input type="checkbox"/>	<input checked="" type="checkbox"/>
			1 <sup>st</sup> < 30" from Rim Yes <input checked="" type="checkbox"/> No <input type="checkbox"/>								
			Last < 24" from Bench Yes <input checked="" type="checkbox"/> No <input type="checkbox"/>								

GPS Rim Elev: 859.61 MH Diameter: 5' Surchage: Yes ☐ No ☒

In MH 1 (Upstrm)	<u>151-007</u>	Depth High	<u>15.18</u>	Elev:	<u>844.43</u>	Depth Low:		Elev:	
In MH 2 (Upstrm)	<u>151-030</u>	Depth High	<u>15.08</u>	Elev:	<u>844.33</u>	Depth Low:		Elev:	
In MH 3 (Upstrm)		Depth High:		Elev:		Depth Low:		Elev:	

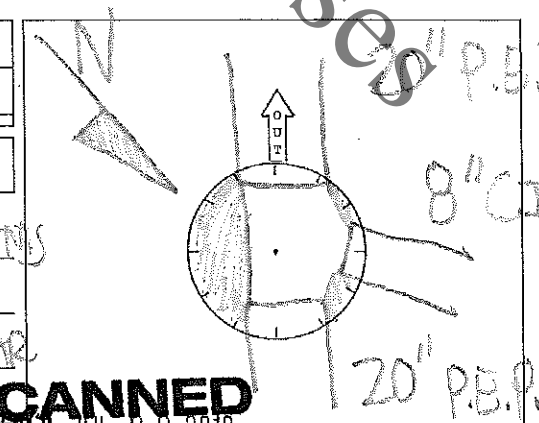
Serv 1 Clock Pos:	Address:	
Depth High:	Elev:	Depth Low: Elev:
Serv 2 Clock Pos:	Address:	
Depth High:	Elev:	Depth Low: Elev:
Serv 3 Clock Pos:	Address:	
Depth High:	Elev:	Depth Low: Elev:

Out is considered 12:00 and service clock position shall be given from 12:00.

Out MH 1 (Dwnstrm)	<u>151-005</u>	Depth:	<u>15.22</u>	Elev:	<u>844.39</u>
Out MH 2 (Dwnstrm)		Depth:		Elev:	

Metered ☐ Outside Drop ☐ Inside Drop ☐

Comments: NO BOLTS IN LID, BARREL JOINTS  
APPEAR TO BE LEAKING AND RUNNING  
DOWN WALL. IN IN 20" P.E.P. HAS MORTAR  
FALLING OFF OF TOP OF PIPE.



SCANNED  
 JUL 09 2019

# ROCK RIVER WATER RECLAMATION DISTRICT

25

## Manhole Inspection Form

Manhole ID: 151-007 Inspector: CB Date: July 1, 2019

Address/Location: RVC CAMPUS

Surface Cover: Asphalt ☐ Concrete ☐ Turf ☒ Gravel ☐ Other ☐ Ponding: Yes ☐ No ☒

Lid / Cover:	Open Grate <input type="checkbox"/>	Sanitary Stamp <input checked="" type="checkbox"/>	Bolt-down <input checked="" type="checkbox"/>	Frame:	Cast Iron <input checked="" type="checkbox"/>	Good <input type="checkbox"/>
	Concealed Pickhole <input checked="" type="checkbox"/>	No Stamp <input type="checkbox"/>	Gasket <input checked="" type="checkbox"/>		Other <input type="checkbox"/>	Fair <input type="checkbox"/>
	Open Pickhole <input type="checkbox"/>	Other <input type="checkbox"/>	Low Profile <input type="checkbox"/>			Poor <input checked="" type="checkbox"/>

Adj. Rings:	Precast <input checked="" type="checkbox"/>	Good <input type="checkbox"/>	Cone:	Precast <input checked="" type="checkbox"/>	Good <input type="checkbox"/>	Wall / Base:	Precast <input checked="" type="checkbox"/>	Good <input type="checkbox"/>
	Brick <input type="checkbox"/>	Fair <input checked="" type="checkbox"/>		Brick <input type="checkbox"/>	Fair <input checked="" type="checkbox"/>		Brick <input type="checkbox"/>	Fair <input type="checkbox"/>
	Block <input type="checkbox"/>	Poor <input type="checkbox"/>		Block <input type="checkbox"/>	Poor <input type="checkbox"/>		Block <input type="checkbox"/>	Poor <input checked="" type="checkbox"/>
	Other <input type="checkbox"/>			Flat Top <input type="checkbox"/>			Other <input type="checkbox"/>	
	None <input type="checkbox"/>			Other <input type="checkbox"/>			Coating <input type="checkbox"/>	

Bench:	Conc. <input checked="" type="checkbox"/>	Flat <input type="checkbox"/>	Steps:	Cast Iron <input checked="" type="checkbox"/>	Good <input type="checkbox"/>	Infiltr:	Low	Med	Heavy	None	
	Block <input type="checkbox"/>	Half <input type="checkbox"/>		Plastic <input type="checkbox"/>	Fair <input checked="" type="checkbox"/>		Adj.	<input type="checkbox"/>	<input type="checkbox"/>	<input type="checkbox"/>	<input checked="" type="checkbox"/>
	Brick <input type="checkbox"/>	3/4 <input checked="" type="checkbox"/>		None <input type="checkbox"/>	Poor <input type="checkbox"/>		Cone	<input type="checkbox"/>	<input type="checkbox"/>	<input type="checkbox"/>	<input checked="" type="checkbox"/>
	Other <input type="checkbox"/>			1 <sup>st</sup> < 30" from Rim Yes <input checked="" type="checkbox"/> No <input type="checkbox"/>	Wall		<input checked="" type="checkbox"/>	<input type="checkbox"/>	<input type="checkbox"/>	<input type="checkbox"/>	
	None <input type="checkbox"/>			Last < 24" from Bench Yes <input checked="" type="checkbox"/> No <input type="checkbox"/>	Bench		<input checked="" type="checkbox"/>	<input type="checkbox"/>	<input type="checkbox"/>	<input type="checkbox"/>	

GPS Rim Elev: 860.90 MH Diameter: 4' Surchage: Yes ☐ No ☒

In MH 1 (Upstrm) 151-008 Depth High: 14.85 Elev: 846.05 Depth Low: \_\_\_\_\_ Elev: \_\_\_\_\_  
 In MH 2 (Upstrm) \_\_\_\_\_ Depth High: \_\_\_\_\_ Elev: \_\_\_\_\_ Depth Low: \_\_\_\_\_ Elev: \_\_\_\_\_  
 In MH 3 (Upstrm) \_\_\_\_\_ Depth High: \_\_\_\_\_ Elev: \_\_\_\_\_ Depth Low: \_\_\_\_\_ Elev: \_\_\_\_\_

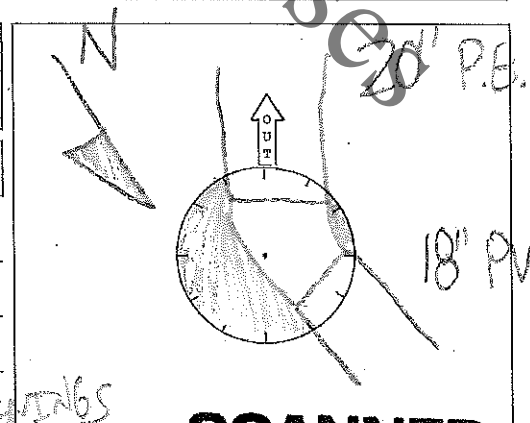
Serv 1 Clock Pos: \_\_\_\_\_ Address: \_\_\_\_\_  
 Depth High: \_\_\_\_\_ Elev: \_\_\_\_\_ Depth Low: \_\_\_\_\_ Elev: \_\_\_\_\_  
 Serv 2 Clock Pos: \_\_\_\_\_ Address: \_\_\_\_\_  
 Depth High: \_\_\_\_\_ Elev: \_\_\_\_\_ Depth Low: \_\_\_\_\_ Elev: \_\_\_\_\_  
 Serv 3 Clock Pos: \_\_\_\_\_ Address: \_\_\_\_\_  
 Depth High: \_\_\_\_\_ Elev: \_\_\_\_\_ Depth Low: \_\_\_\_\_ Elev: \_\_\_\_\_

Out is considered 12:00 and service clock position shall be given from 12:00.

Out MH 1 (Dwnstrm) 151-006 Depth: 14.86 Elev: 846.04  
 Out MH 2 (Dwnstrm) \_\_\_\_\_ Depth: \_\_\_\_\_ Elev: \_\_\_\_\_

Metered ☐ Outside Drop ☐ Inside Drop ☐

Comments: FRAME LID IS SO WORN THAT IT NEEDS TO BE REPLACED. MH IN AND OUT IS LEAKING LIGHT INFILTRATION WHERE BRICKS WERE BUILT UP OVER BOTH MH OPENINGS



SCANNED

# ROCK RIVER WATER RECLAMATION DISTRICT

# 26

## Manhole Inspection Form

Manhole ID: 022-016 Inspector: CN Date: 4-30-20

Address/Location: 923 Serrano Rd.

Surface Cover: Asphalt ☒ Concrete ☐ Turf ☐ Gravel ☐ Other ☐ Ponding: Yes ☐ No ☒

Lid / Cover:	Open Grate <input checked="" type="checkbox"/>	Sanitary Stamp <input type="checkbox"/>	Bolt-down <input type="checkbox"/>	Frame:	Cast Iron <input checked="" type="checkbox"/>	Good <input type="checkbox"/>
	Concealed Pickhole <input type="checkbox"/>	No Stamp <input checked="" type="checkbox"/>	Gasket <input type="checkbox"/>		Other <input type="checkbox"/>	Fair <input checked="" type="checkbox"/>
	Open Pickhole <input type="checkbox"/>	Other <input type="checkbox"/>	Low Profile <input type="checkbox"/>			Poor <input type="checkbox"/>

Adj. Rings:	Precast <input type="checkbox"/>	Good <input type="checkbox"/>	Cone:	Precast <input type="checkbox"/>	Good <input type="checkbox"/>	Wall / Base:	Precast <input type="checkbox"/>	Good <input type="checkbox"/>
	Brick <input checked="" type="checkbox"/>	Fair <input checked="" type="checkbox"/>		Brick <input checked="" type="checkbox"/>	Fair <input checked="" type="checkbox"/>		Brick <input checked="" type="checkbox"/>	Fair <input checked="" type="checkbox"/>
	Block <input type="checkbox"/>	Poor <input type="checkbox"/>		Block <input type="checkbox"/>	Poor <input type="checkbox"/>		Block <input type="checkbox"/>	Poor <input type="checkbox"/>
	Other <input type="checkbox"/>			Flat Top <input type="checkbox"/>			Other <input type="checkbox"/>	
Qty	Size			Other <input type="checkbox"/>			Coating <input type="checkbox"/>	

Bench:	Conc. <input checked="" type="checkbox"/>	Flat <input type="checkbox"/>	Steps:	Cast Iron <input checked="" type="checkbox"/>	Good <input type="checkbox"/>	Infiltr:	Low	Med	Heavy	None				
	Block <input type="checkbox"/>	Half <input checked="" type="checkbox"/>		Plastic <input type="checkbox"/>	Fair <input type="checkbox"/>		Adj.	<input type="checkbox"/>	<input type="checkbox"/>	<input type="checkbox"/>	<input type="checkbox"/>			
	Brick <input type="checkbox"/>	3/4 <input type="checkbox"/>		None <input type="checkbox"/>	Poor <input checked="" type="checkbox"/>		Cone	<input type="checkbox"/>	<input type="checkbox"/>	<input type="checkbox"/>	<input type="checkbox"/>			
	Other <input type="checkbox"/>						Wall	<input type="checkbox"/>	<input type="checkbox"/>	<input type="checkbox"/>	<input type="checkbox"/>			
	None <input type="checkbox"/>									Bench	<input type="checkbox"/>	<input type="checkbox"/>	<input checked="" type="checkbox"/>	<input type="checkbox"/>

GPS Rim Elev: 716.90 MH Diameter: 3' Surcharge: Yes ☐ No ☒

In MH 1 (Upstrm) 022-017 Depth High: -17.20 Elev: 699.20 Depth Low: \_\_\_\_\_ Elev: \_\_\_\_\_  
 In MH 2 (Upstrm) 022-091 Depth High: -23.75 Elev: 693.15 Depth Low: \_\_\_\_\_ Elev: \_\_\_\_\_  
 In MH 3 (Upstrm) \_\_\_\_\_ Depth High: \_\_\_\_\_ Elev: \_\_\_\_\_ Depth Low: \_\_\_\_\_ Elev: \_\_\_\_\_

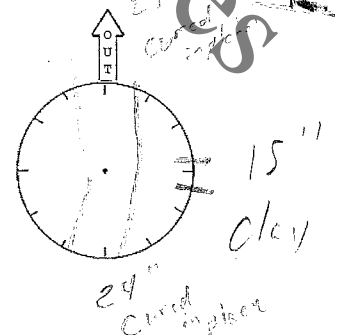
Serv 1 Clock Pos: \_\_\_\_\_ Address: \_\_\_\_\_  
 Depth High: \_\_\_\_\_ Elev: \_\_\_\_\_ Depth Low: \_\_\_\_\_ Elev: \_\_\_\_\_  
 Serv 2 Clock Pos: \_\_\_\_\_ Address: \_\_\_\_\_  
 Depth High: \_\_\_\_\_ Elev: \_\_\_\_\_ Depth Low: \_\_\_\_\_ Elev: \_\_\_\_\_  
 Serv 3 Clock Pos: \_\_\_\_\_ Address: \_\_\_\_\_  
 Depth High: \_\_\_\_\_ Elev: \_\_\_\_\_ Depth Low: \_\_\_\_\_ Elev: \_\_\_\_\_

Out is considered 12:00 and service clock position shall be given from 12:00.

Out MH 1 (Dwnstrm) 022-015 Depth: -23.75 Elev: 693.15  
 Out MH 2 (Dwnstrm) \_\_\_\_\_ Depth: \_\_\_\_\_ Elev: \_\_\_\_\_

Metered ☐ Outside Drop ☐ Inside Drop ☐

Comments: Heavy Infiltration



**Section V**

**General Provisions & Technical  
Specifications for Sanitary Sewer  
Construction**

(Separate document incorporated by reference)