

**Addendum No. 2
Storage Building
Capital Project No. 2157**

This Addendum No. 2, dated September 16, 2020, to the Invitation to Bid: Storage Building, Capital Project No. 2157, bid opening September 21, 2020 at 11:00 am, supersedes all contrary and conflicting information in the above-mentioned instructions, specifications, and contract documents which are hereby supplemented or revised in certain particulars as follows:

Information/Clarification

Due to the ongoing COVID-19 pandemic, the Steve Graceffa Administration Building is closed to the general public. Bids may still be delivered in-person. Bids delivered in-person must be placed in the blue bid box located in the foyer of the main entrance of the Steve Graceffa Administration Building located at 3501 Kishwaukee Street, Rockford, Illinois, 61109, prior to the due date and time. Signage will be in place directing those wishing to attend the public opening to the south entrance of the District Board Room where the opening will be held. Those in attendance must wear a face covering or mask.

A question was presented regarding the acceptability of using a metal framed building. RRWRD advised that a metal framed building is not an acceptable substitute for the existing foundation and environmental conditions. The structure shall be per the drawings and per Section 13 34 18 Pre-Engineered Post Frame Building Systems.

AD1-1 General Information

The District submits this Addendum to provide new information and to change existing information for potential respondents.

AD1-2 Section 033000 Cast-In-Place Concrete

Item 1 of 4: Paragraph 2.4.A, change “not less than 10 mils thick” to “not less than 15 mils thick”.

Item 2 of 4: Paragraph 2.4.A, following this paragraph insert the following “B. Stego Wrap 15-mil Vapor Barrier with Stego approved adhesive, tape, and mastic by Stego Industries, LLC.”

Item 3 of 4: Paragraph 2.6.E, at the end of this item, insert “Interior floor slab curing material shall be nonfilm-forming and shall be compatible with BASF Lapidolith concrete hardener and dustproofer, such as Sonneborn Kure-N-Harden.”

Item 4 of 4: Paragraph 3.12.A.2, replace the word “seven” with the word “fourteen”.

AD1-3 Sheet Cover

Delete this sheet in its entirety and replace with the attached Cover Sheet.

AD1-4 Sheet A101

Delete this sheet in its entirety and replace with the attached Sheet No. A101.

AD1-5 Sheet A102

Delete this sheet in its entirety and replace with the attached Sheet No. A102.

AD1-6 Sheet A103


Delete this sheet in its entirety and replace with the attached Sheet No. A103.

This information shall be taken into consideration by bidders when preparing the bid. Bidders shall acknowledge all project addenda on Proposal Form. This addendum and attachments will be emailed to all plan holders as well as posted on the District's website at www.rr wrd.dst.il.us.

END OF ADDENDUM NO. 2

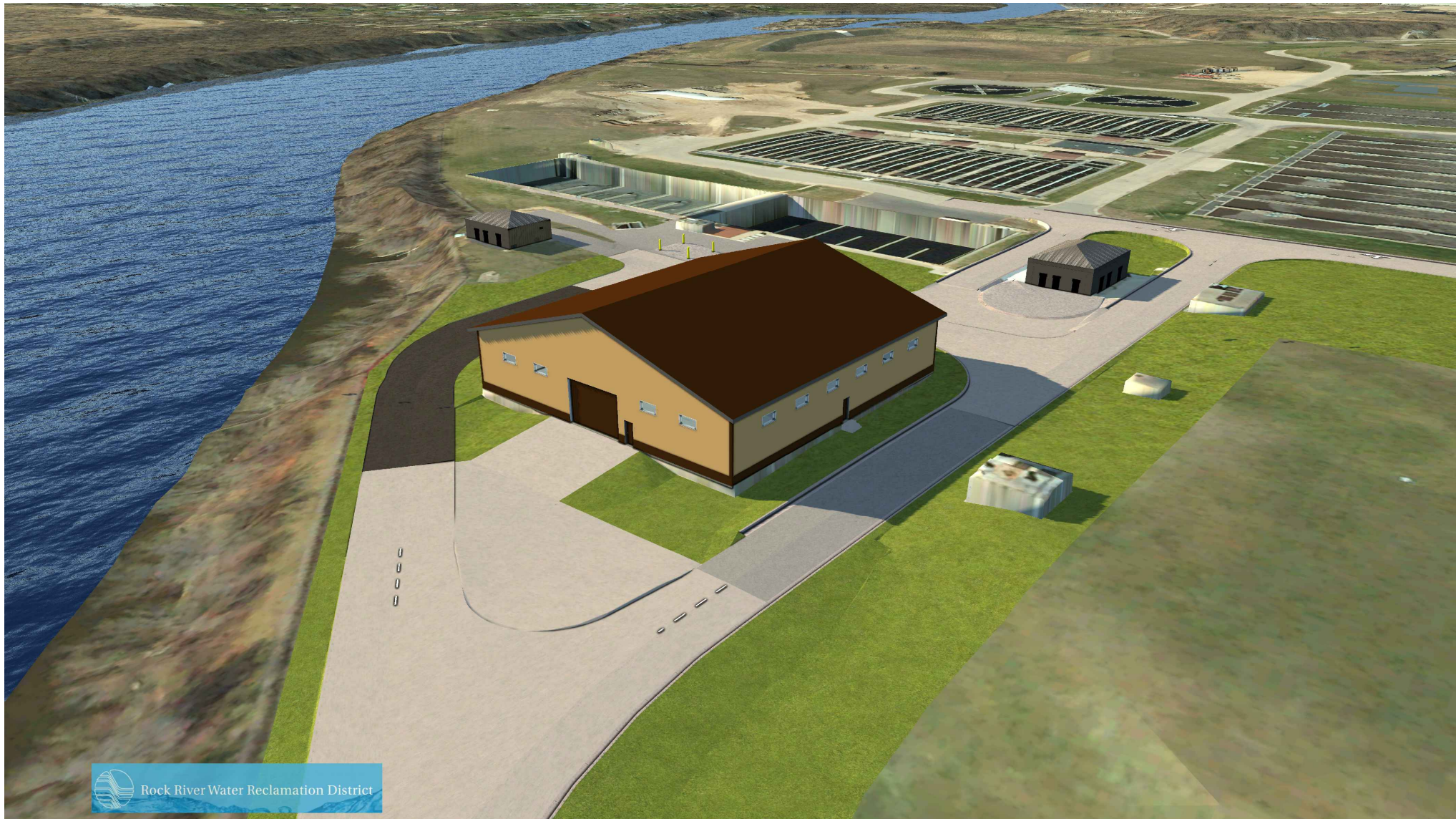
Issued September 16, 2020

Rock River Water Reclamation District



Christopher T. Baer, PE
Director of Engineering

New Utility Building for



Rockford, Illinois

APPLICABLE CODES:

BUILDING:
~2015 ICC [IBC] International Building Code (with local amendments)

FIRE PREVENTION:
~2015 ICC [IFC] International Fire Code (with local amendments)

MECHANICAL / PLUMBING:
~2015 ICC [IMC] International Mechanical Code (with local amendments)
~2015 ICC [IFGC] International Fuel Gas Code (with local amendments)
~2014 IDPH [IPC] Illinois Plumbing Code (with local amendments)

ELECTRICAL:
~2014 NFPA 70 [NEC] National Electrical Code (with local amendments)

ENERGY CODE:
~2018 International Energy Conservation Code (with local amendments)

ACCESSIBILITY CODE:
~2018 State of Illinois Accessibility Code
~2010 ADA Standards for Accessible Design

LIFE SAFETY CODE:
~2015 NFPA 101 Life Safety Code (with local amendments)
~2010 NFPA 101 Life Safety Code (with local amendments)

OTHERS:
~All those codes & standards [i.e. NFPA 13, NFPA 72, etc.] included by reference by the codes listed above.

NOTES:

1. Guide of the American Society of Heating, Refrigerating, and Air Conditioning Engineers (ASHRAE).
2. The standards, regulations, and requirements of OSHA, EPA, National Consumer Protection Agency, and any other public utility servicing the community.
3. Exceptions and amendments to above codes and standards adopted by the City of Rockford
4. Provide fire extinguishers, smoke detectors and all other life safety devices as required by code. All locations to be approved by Blakemore Architects.
5. City of Rockford Zoning Ordinance.

GENERAL NOTES:

1. Contractor as agent for the owner, shall apply for and pay for all permits issued in accordance with section 105 of IBC 2015, the application shall be submitted on a written form acceptable to the building official.
2. All work shall be conducted, installed and completed in a workmanlike and acceptable manner so as to secure the results intended by the IBC Code (2015).
3. This building is equipped with alarm systems for smoke, fire and security.

SHEET INDEX:

ARCHITECTURAL:

A101	Floor Plans
A102	Elevations
A103	Wall Sections

Current Drawing Date
09-16-2020
09-16-2020
09-16-2020

9-16-20

STRUCTURAL:

S001	General Notes	08-03-2020
S100	Foundation Plan	08-03-2020
S101	Roof Framing Plan	08-03-2020
S300	Sections & Details	08-03-2020

CIVIL:

C-001	Legend, General Notes & Location Map-For Reference Use Only	08-07-2020
C-002	Site Plan-For Reference Use Only	08-07-2020

CODE SYNOPSIS:

Construction Type:	5B
Use Group	S-1 (Unconditioned Storage)
Fully Sprinkled	None (less than 12,000 s.f.)
Allowable Size	15,750 s.f. (9,000 s.f. plus 6,750 s.f. perimeter increase)
Building Size	10,404

BA

BLAKEMORE
ARCHITECTS

9-16-20

Date: 09-16-2020 Project: 20-18
Addendum Two

PROFESSIONAL DESIGN FIRM REGISTRATION #
184-003342



7-16-2020

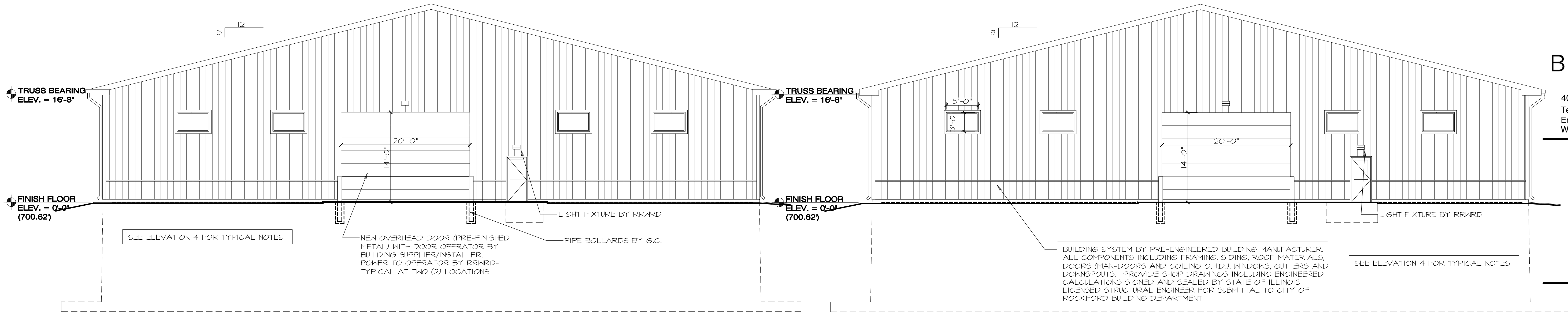
date

license expires 11-30-20

PROFESSIONAL DESIGN FIRM REGISTRATION #
184-003342

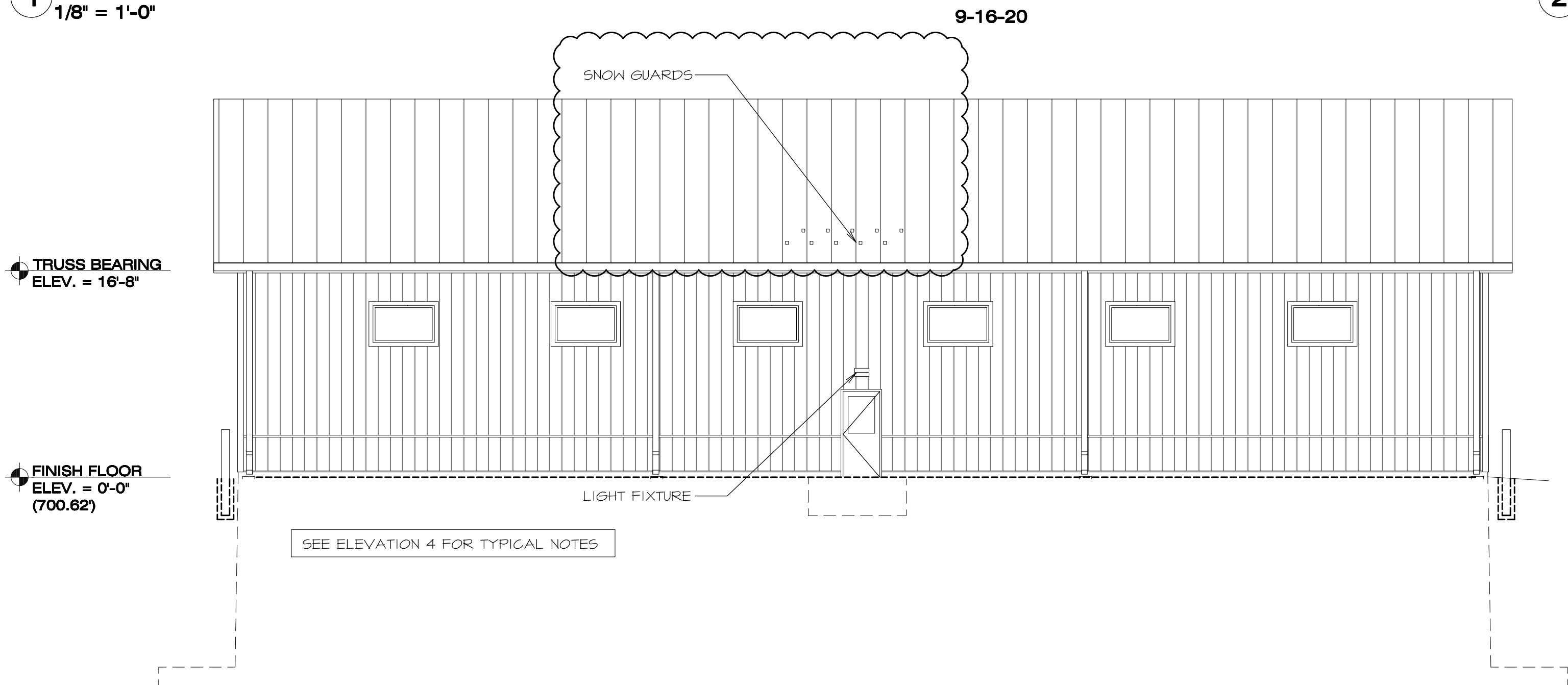
2 Floor Plan
3/32" = 1'-0"

N:\Projects\2020 Projects\20-18 RRWRD Tank Building\Final\20-18- A101 6-26-2020.dwg Sep 15, 2020 - 10:21am Brian

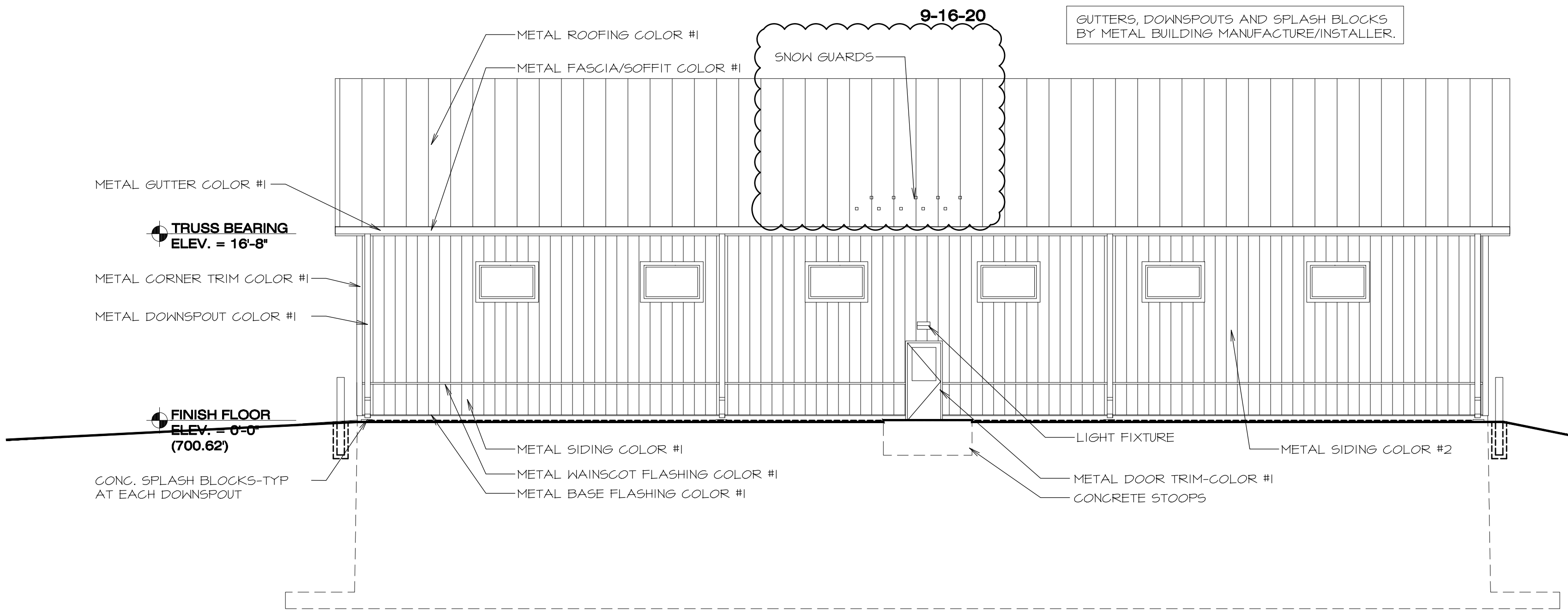


1 North Building Elevation
1/8" = 1'-0"

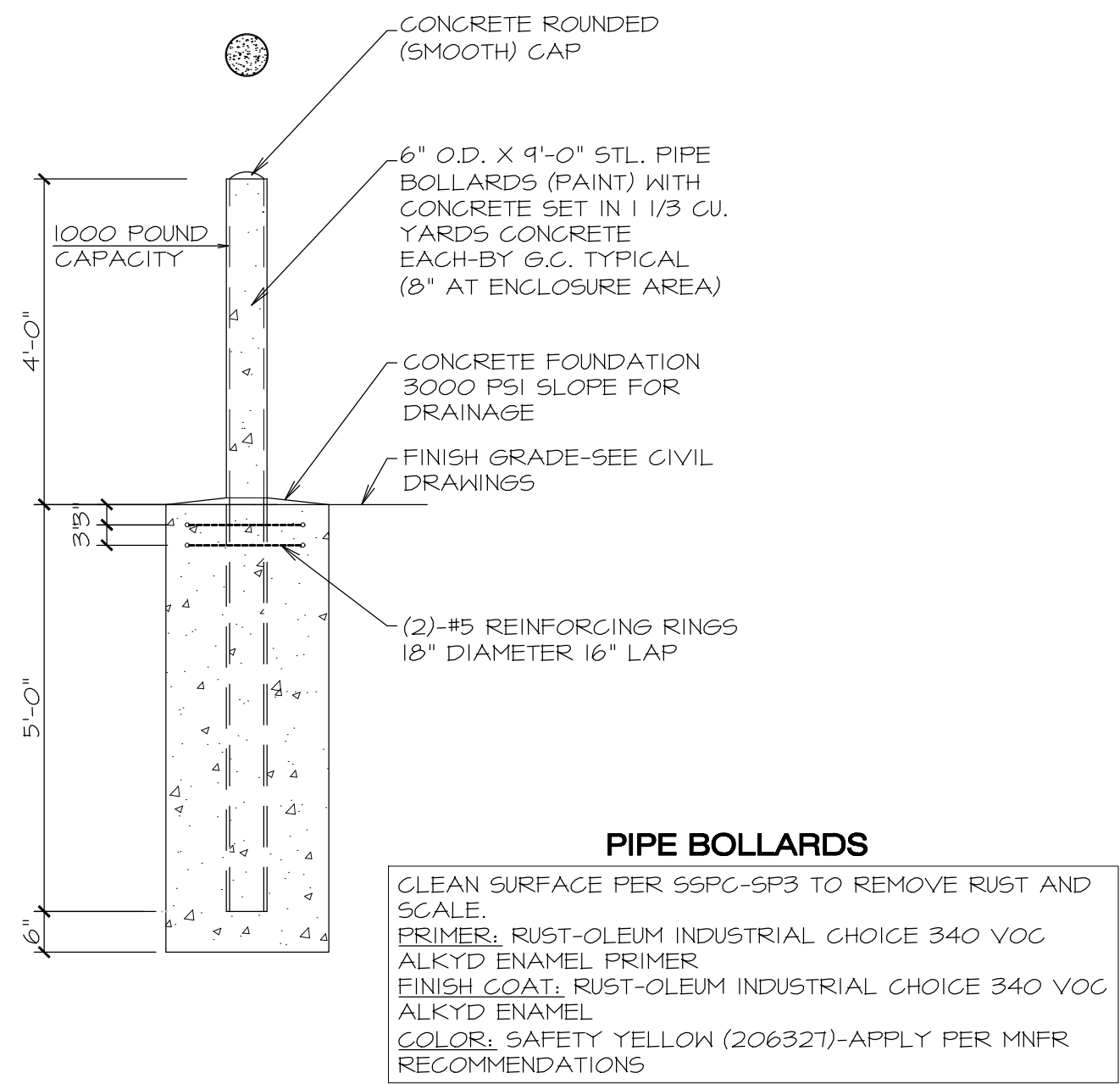
2 South Building Elevation
1/8" = 1'-0"



3 East Building Elevation
1/8" = 1'-0"



4 West Building Elevation
1/8" = 1'-0"



5 Typical 6" Pipe Bollard Detail
Scale: 1/2" = 1'-0"

BA

BLAKEMORE

ARCHITECTS

400 N. First Street Rockford, IL 61107

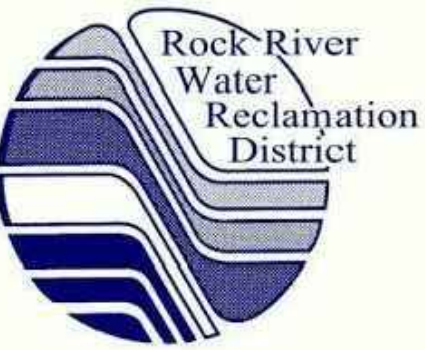
Telephone: 815-227-0023

Email: Brian@blakemore-architects.com

Web: blakemore-architects.com

New Utility Building

for



3501 Kishwaukee Street
Rockford, Illinois

THE CONTRACTOR SHALL DETERMINE EXACT DIMENSIONS AND CONDITIONS AT THE SITE PRIOR TO SUBMITTING A BID. THE CONTRACTOR SHALL COORDINATE ALL DRAWINGS WITH ACTUAL FIELD CONDITIONS PRIOR TO PROCEEDING WITH THE WORK AND NOTIFY THE ARCHITECT OF ANY DISCREPANCIES. THIS DRAWING IS THE PROPERTY OF BLAKEMORE ARCHITECTS AND MAY NOT BE REPRODUCED WITHOUT THE PRIOR WRITTEN PERMISSION OF THE ARCHITECT.

NO.	DATE	DESCRIPTION
1.	06-26-2020	Initial Layout
2.	07-7-2020	Review Set
3.	07-16-2020	Review Set
4.	08-03-2020	Issued for Construction
5.	09-16-2020	Addendum Two

© COPYRIGHT Blakemore Architects 2020

BA Project No. 20-18

Scale

1/8" = 1'-0"

Sheet Title

ELEVATIONS

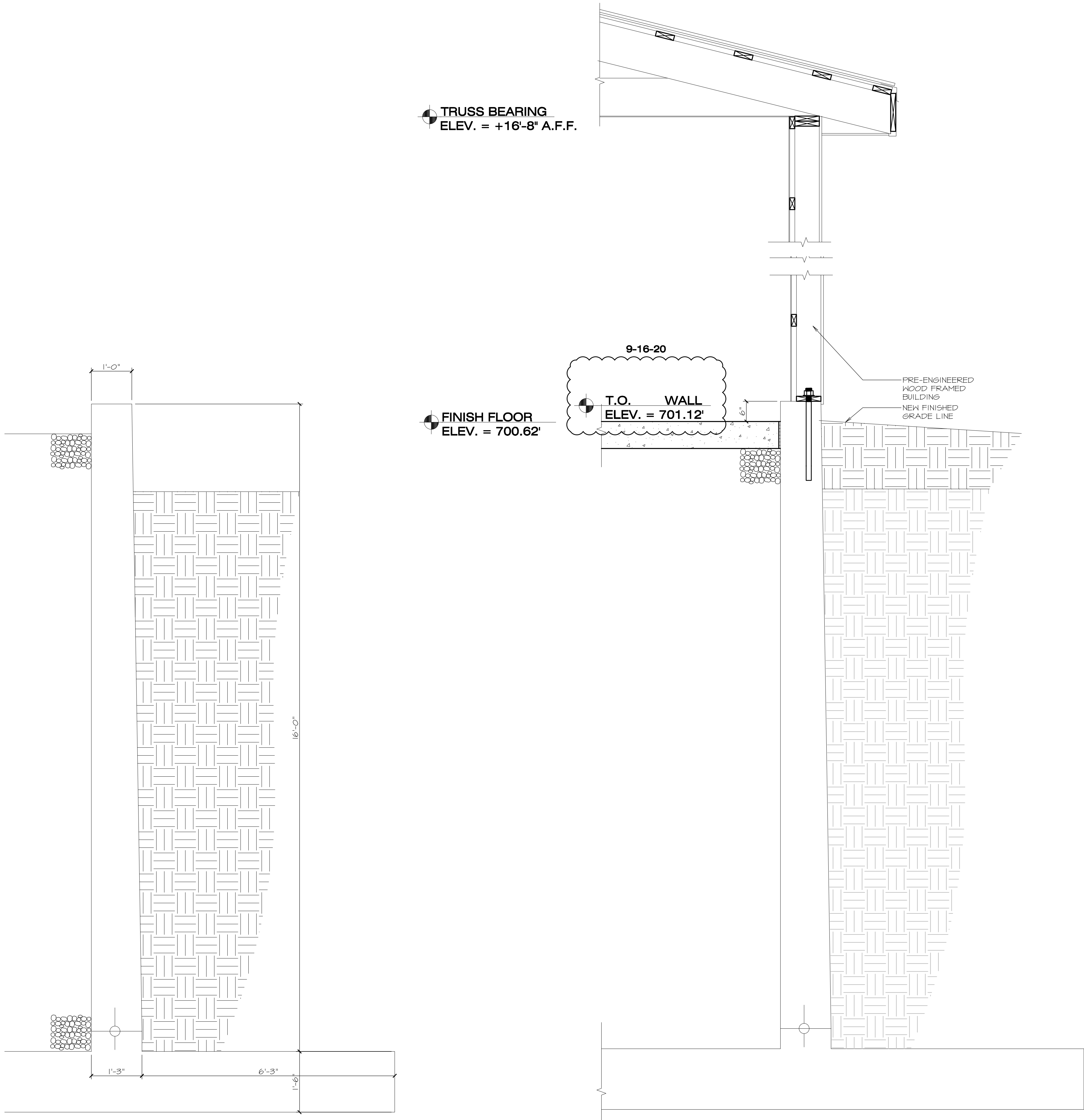
Ref. North

Sheet No.

A102

PROFESSIONAL DESIGN FIRM REGISTRATION #
184-003342


N:\Projects\2020 Projects\20-18 RRWRD Tank Building\Final\20-18- A101 6-26-2020.dwg Sep 15, 2020 - 10:23am Brian



1 Existing Tank Wall
3/4" = 1'-0"

2 Proposed New Wall Section
3/4" = 1'-0"

9-16-20



STEGO[®] WRAP VAPOR BARRIER/RETARDER INSTALLATION INSTRUCTIONS

IMPORTANT: Please read these installation instructions completely, prior to beginning any Stego Wrap installation. The following installation instructions are based on ASTM E1643 - Standard Practice for Selection, Design, Installation, and Inspection of Water Vapor Retarders Used in Contact with Earth or Granular Fill Under Concrete Slabs. If project specifications call for compliance with ASTM E1643, then be sure to review the specific installation sections outlined in the standard along with the techniques referenced in these instructions.

P1 of 2

UNDER-SLAB INSTRUCTIONS:

- Stego Wrap can be installed over an aggregate, sand, or tamped earth base. It is not necessary to have a cushion layer or sand base, as Stego Wrap is tough enough to withstand rugged construction environments.
- Unroll Stego Wrap over the area where the slab is to be placed. Stego Wrap should completely cover the concrete placement area. All joints/ seams both lateral and butt should be overlapped a minimum of 6" and taped using Stego[®] Tape.
NOTE: The area of adhesion should be free from dust, dirt, moisture, and frost to allow maximum adhesion of the pressure-sensitive tape.
- ASTM E1643 requires sealing the perimeter of the slab. *Extend vapor retarder over footings and seal to foundation wall, grade beam, or slab at an elevation consistent with the top of the slab or terminate at impediments such as waterstops or dowels.* Consult the structural engineer of record before proceeding.
SEAL TO SLAB AT PERIMETER*
NOTE: Clean the surface of Stego Wrap to ensure that the area of adhesion is free from dust, dirt, moisture, and frost to allow maximum adhesion of the pressure-sensitive adhesive.
 - Install Stego[®] "Crete Claw[™]" Tape on the entire perimeter edge of Stego Wrap.
 - Prior to the placement of concrete, ensure that the top of Stego "Crete Claw Tape is free of dirt, debris, or mud to maximize the bond to the concrete.

STEGO LABOR SÁVER!

- This method not only complies with ASTM E1643, but it also:
 - reduces labor compared to other perimeter sealing techniques,
 - can be used even without an existing wall or footing, unlike alternatives.

OR: SEAL TO PERIMETER WALL WITH STEGOTACK[®] TAPE.*

- Make sure area of adhesion is free of dust, dirt, debris, moisture, and frost to allow maximum adhesion.
- Remove release liner on one side and stick to desired surface.
- When ready to apply Stego Wrap, remove the exposed release liner and press Stego Wrap firmly against StegoTack Tape to secure.

* If ASTM E1643 is specified, consult with project architect and structural engineer to determine which perimeter seal technique should be employed for the project.

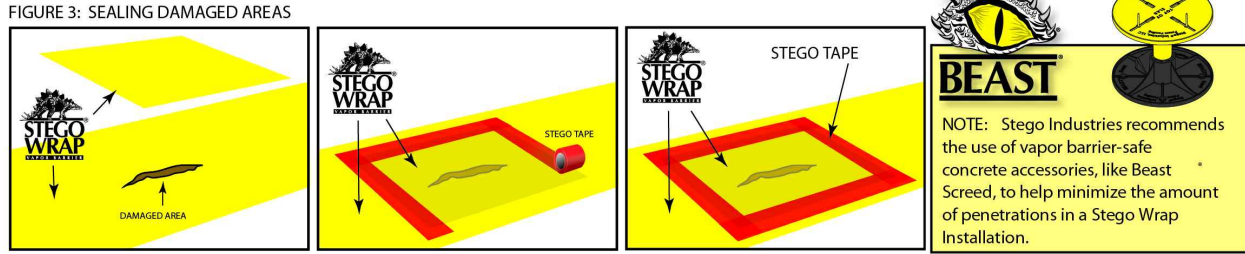
Continued...
See Supplement on page 2.

www.stegoindustries.com

P2 of 2

4 In the event that Stego Wrap is damaged during or after installation, repairs must be made. For holes, cut a piece of Stego Wrap to a size and shape that covers any damage by a minimum overlap of 6" in all directions. Clean all adhesion areas of dust, dirt, moisture, and frost. Tape down all edges using Stego[®] Tape (see figure 3, Sealing Damaged Areas).

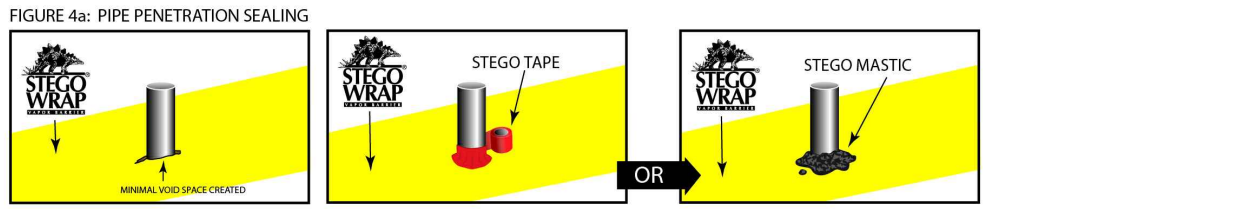
FIGURE 3: SEALING DAMAGED AREAS



NOTE: Stego Industries recommends the use of vapor barrier-safe concrete accessories, like the Beast[®] Screed, to help minimize the amount of penetrations in a Stego Wrap installation.

5 IMPORTANT: ALL PENETRATIONS MUST BE SEALED. All pipe, ducting, rebar, wire penetrations and block outs should be sealed using Stego Wrap, Stego Tape and/or Stego Mastic (see figure 4a, Pipe Penetration Sealing).

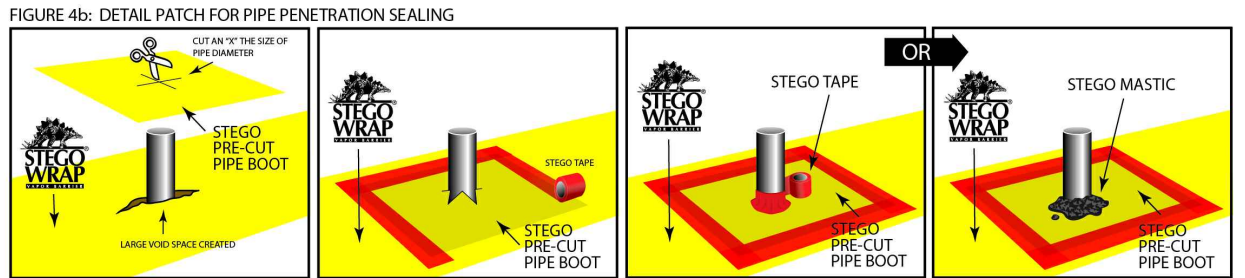
FIGURE 4a: PIPE PENETRATION SEALING



STEGO WRAP PIPE PENETRATION REPAIR DETAIL:

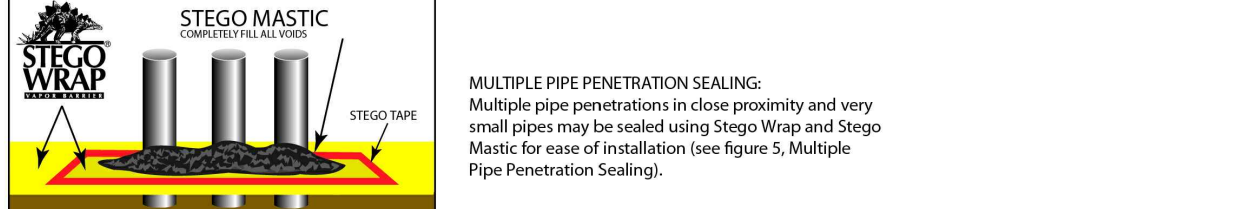
- Install Stego Wrap around pipe penetrations by slitting/cutting material as needed. Try to minimize the void space created.
- If Stego Wrap is close to pipe and void space is minimized then seal around pipe penetration with Stego Tape and/or Stego Mastic. (See Figure 4b)
- If detail patch is needed to minimize void space around penetration, then cut a detail patch to a size and shape that creates a 6" overlap on all edges around the void space at the base of the pipe. Stego Pre-Cut Pipe Boots are also available to speed up the installation.
- Cut an "X" the size of the pipe diameter in the center of the pipe boot and slide tightly over pipe.
- Tape down all sides of the pipe boot with Stego Tape.
- Seal around the base of the pipe using Stego Tape and/or Stego Mastic. (See Figure 4b)

FIGURE 4b: DETAIL PATCH FOR PIPE PENETRATION SEALING



STEGO MASTIC COMPLETES ALL SIDES

FIGURE 5: MULTIPLE PIPE PENETRATION SEALING



MULTIPLE PIPE PENETRATION SEALING:

Multiple pipe penetrations in close proximity and very small pipes may be sealed using Stego Wrap and Stego Mastic for ease of installation (see Figure 5, Multiple Pipe Penetration Sealing).

NOTE: Stego Industries, LLC's ("Stego") installation instructions are based on ASTM E1643 - Standard Practice for Selection, Design, Installation, and Inspection of Water Vapor Retarders Used in Contact with Earth or Granular Fill Under Concrete Slabs. These instructions are meant to be used as a guide, and do not take into account specific job site situations. Consult local building codes and regulations along with the building owner or owner's representative before proceeding. If you have any questions regarding the above mentioned installation instructions or Stego products, please call us at 877-464-7834 for technical assistance. While Stego employees and representatives may provide technical assistance regarding the utility of a specific installation practice or Stego product, they are not authorized to make final design decisions.

STEGO INDUSTRIES, LLC - SAN CLEMENTE, CA 92672 USA • 949-257-4100 • 877-464-7834

Stego, the Stego Industries logo, Stego Wrap, Stego Tape, Stego Mastic, and the Beast logo are all trademarks of Stego Industries, LLC. © 2017 Stego Industries, LLC. All Rights Reserved. Please see www.stegoindustries.com/legals for more information.

www.stegoindustries.com

9-16-20



BLAKEMORE

ARCHITECTS

400 N. First Street Rockford, IL 61107

Telephone: 815-227-0023

Email: Brian@blakemore-architects.com

Web: blakemore-architects.com

New Utility Building

for



3501 Kishwaukee Street
Rockford, Illinois

THE CONTRACTOR SHALL DETERMINE EXACT DIMENSIONS AND CONDITIONS AT THE SITE PRIOR TO SUBMITTING A BID. THE CONTRACTOR SHALL COORDINATE ALL DRAWINGS WITH ACTUAL FIELD CONDITIONS PRIOR TO PROCEEDING WITH THE WORK AND NOTIFY THE ARCHITECT OF ANY DISCREPANCIES. THIS DRAWING IS THE PROPERTY OF BLAKEMORE ARCHITECTS AND MAY NOT BE REPRODUCED WITHOUT THE PRIOR WRITTEN PERMISSION OF THE ARCHITECT.

NO.	DATE	DESCRIPTION
1.	06-26-2020	Initial Layout
2.	07-7-2020	Review Set
3.	07-16-2020	Review Set
4.	08-03-2020	Issued for Construction
5.	09-16-2020	Addendum Two

BA Project No. 20-18

Scale

Sheet Title

3/4" = 1'-0"

WALL SECTIONS

Ref. North Sheet No.

A103

PROFESSIONAL DESIGN FIRM REGISTRATION # 184-003342