

ROCK RIVER WATER RECLAMATION DISTRICT

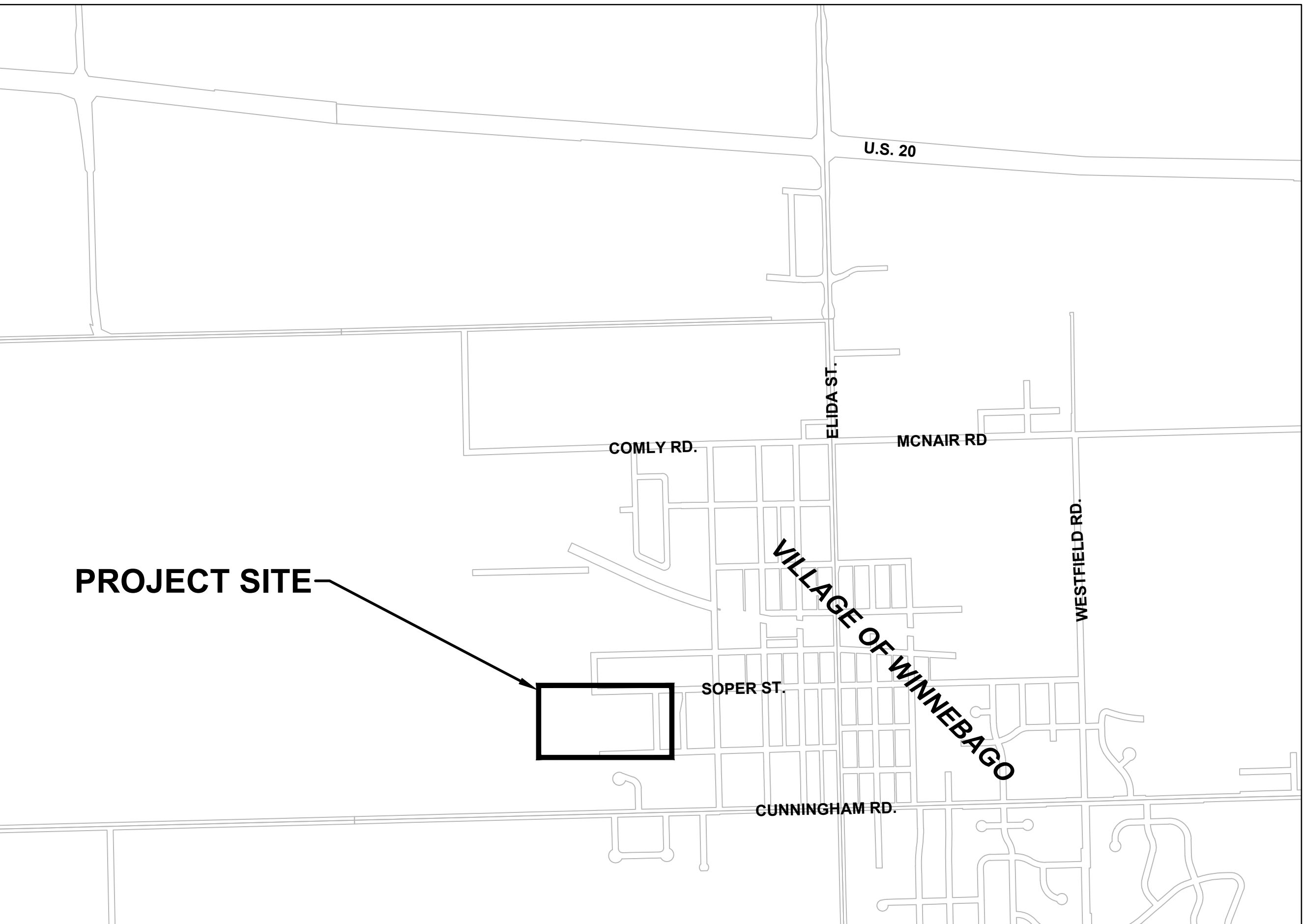
WINNEBAGO STP ABANDONMENT CAPITAL IMPROVEMENT PROJECT 1566 AUGUST 2019

BOARD OF TRUSTEES

DONALD MASSIER	PRESIDENT
ELMER JONES	VICE-PRESIDENT
RICHARD POLLACK	CLERK/TREASURER
JOHN SWEENEY	TRUSTEE
BEN BERNSTEN	TRUSTEE

OFFICIALS

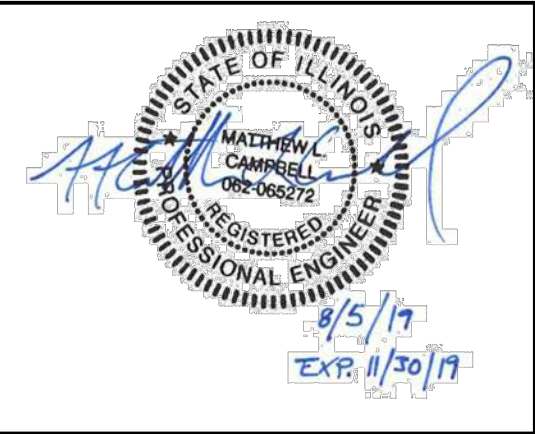
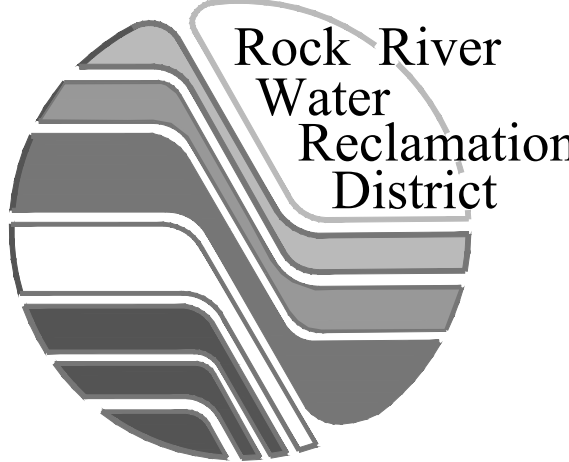
TIMOTHY S. HANSON	DISTRICT DIRECTOR
CHRISTOPHER T. BAER, PE	ENGINEERING MANAGER



WINNEBAGO COUNTY, ILLINOIS

INDEX OF SHEETS

1. COVER
2. LEGEND, GENERAL NOTES, SUMMARY OF QUANTITIES
3. SITE DEMOLITION PLAN
4. SITE GRADING PLAN
5. DETAILED SITE PLAN
6. SITE UTILITY PLAN
7. R.R.W.R.D. STANDARD DETAILS



LEGEND

EXISTING	PROPOSED	
		RIGHT OF WAY LINE
		PROPERTY LINE
		BUILDING
		WATER EDGE
		EASEMENT - PERMANENT SANITARY
		EASEMENT - TEMPORARY CONSTRUCTION
		VEGETATION / TREE LINE
		TREE DRIPLINE
		CONTOUR - MAJOR
		CONTOUR - MINOR
		FENCE
		FENCE - TEMPORARY CONSTRUCTION
		FENCE - SILT
		ROADWAY CENTERLINE
		EDGE OF PAVEMENT
		CURB & GUTTER
		GUARD RAIL
		RAILROAD TRACKS
		CABLE - OVERHEAD
		CABLE - UNDERGROUND
		ELECTRIC - OVERHEAD
		ELECTRIC - UNDERGROUND
		FIBER OPTIC
		GAS LINE
		TELEPHONE - OVERHEAD
		TELEPHONE - UNDERGROUND
		PEDESTALS (CATV, ELEC, TELE), HANDHOLE, GAS METER, ELEC. METER
		SOIL BORING
		BENCHMARK
		MAILBOX
		UTILITY POLE W/ GUY WIRE & MAST ARM LIGHT POLE
		TREE (DECIDUOUS & CONIFEROUS)
		BUSH & SHRUB
		GROUND / LANDSCAPE LIGHT
		SPOT ELEVATION

LEGEND

EXISTING	PROPOSED	
		SANITARY MANHOLE & SANITARY SEWER
		SANITARY SEWER SERVICE & CLEANOUT
		SANITARY FORCEMAIN
		STORM SEWER
		STORM MANHOLE, CATCH BASIN, CURB INLET, INLET SPECIAL
		DRAINAGE CULVERT, WITH END SECTION
		WATER MAIN
		WATER SERVICE & WATER SERVICE VALVE
		WATER MAIN VALVE
		WATER MAIN VALVE WITH BOX
		WATER MAIN VALVE WITH VAULT
		WATER MAIN REDUCER
		FIRE HYDRANT
		EXISTING SURFACE TYPE (HOT-MIX ASPHALT, AGGREGATE, CONCRETE, TURF)
		DITCH CHECK
		INLET OR PIPE PROTECTION
		STABILIZED CONSTRUCTION ENTRANCE
		EROSION CONTROL BLANKET
		HEAVY DUTY EROSION CONTROL BLANKET
		SEEDING AREA, CLASS 1
		SEEDING AREA, CLASS 3
		PAVEMENT REPLACEMENT
		DRIVEWAY REPLACEMENT
		AGGREGATE REPLACEMENT
		RIP RAP

ABBREVIATIONS

ABD = ABANDON(ED)	LS= LUMP SUM
CMF = CORRUGATED METAL PIPE	MH = MANHOLE
CO = CLEAN OUT	PVMNT = PAVEMENT
CTRL= CONTROL	PR = PROPOSED
CY = CUBIC YARD(S)	RCP = REINFORCED CONCRETE PIPE
DI = DUCTILE IRON	REM = REMOVE(D)
EA = EACH	REPL = REPLACE(D)
EL = ELEVATION	R/R = REMOVE & REPLACE
EROS= EROSION	SAN = SANITARY
EX = EXISTING	SVC = SERVICE
FM = FORCE MAIN	SY = SQUARE YARD(S)
FT = FEET	TY = TYPE
INV = INVERT	UNK = UNKNOWN
LF = LINEAR FEET	VCP = VITRIFIED CLAY PIPE
LINCIPP = LINED WITH CURED IN PLACE PIPE	WM = WATER MAIN

GENERAL NOTES

1. THE CONTRACTOR IS SOLELY RESPONSIBLE FOR EXECUTION OF WORK TO THE LINES AND GRADES SHOWN ON THESE PLANS. CONSTRUCTION SHALL NOT VARY FROM PLANS WITHOUT DISTRICT APPROVAL.
2. THE ROCK RIVER WATER RECLAMATION DISTRICT, MUNICIPALITIES, PERTINENT ROADWAY AUTHORITIES, AND ALL AFFECTED PROPERTY OWNERS SHALL BE NOTIFIED AT LEAST 48 HOURS BEFORE CONSTRUCTION CAN COMMENCE.
3. ALL SERVICE LOCATIONS ARE APPROXIMATE AND MAY BE CHANGED IN THE FIELD WITH THE APPROVAL OF THE INSPECTOR. NO ADDITIONAL COMPENSATION WILL BE AWARDED DUE TO REVISED LOCATION.
4. ALL CASTINGS SHALL BE SET TO FINAL GRADE PER ROCK RIVER WATER RECLAMATION DISTRICT REQUIREMENTS.
5. THE CONTRACTOR SHALL VERIFY THE LOCATION OF ALL UTILITIES IN THE FIELD PRIOR TO CONSTRUCTION. THE CONTRACTOR SHALL NOTIFY J.U.L.I.E. AT 8-1-1 OR 1-800-892-0123 AND ANY OTHER UTILITIES NOT ON THE J.U.L.I.E. SYSTEM 48 HOURS PRIOR TO THE START OF CONSTRUCTION.
6. THE CONTRACTOR SHALL COMPLY WITH ALL REQUIREMENTS OF THE I.E.P.A. STANDARDS AND SPECIFICATIONS, AND THE ILLINOIS URBAN MANUAL FOR SOIL EROSION AND SEDIMENT CONTROL.
7. PROTECTION OF WATER SUPPLIES SHALL BE PER THE REQUIREMENTS OF TITLE 35, C, SECTION 370.350 OF THE ILLINOIS RECOMMENDED STANDARDS FOR SEWAGE WORKS.

SUMMARY OF QUANTITIES

No.	ITEM	UNIT	QTY.
1	LAGOON BIO SOLIDS DISPOSAL	TON	4,300
2	DEMOLITION	LS	1
3	GRADING & SHAPING	ACRE	6
4	ABANDON SANITARY MANHOLE	EA	3
5	ADJUST SANITARY MANHOLE	EA	1
6	SIDEWALK REMOVAL	SF	1,374
7	PCC SIDEWALK, 5"	SF	296
8	PCC CURB & GUTTER, TYPE M-4.18	LF	116
9	RECYCLED ASPHALT AGGREGATE SURFACE COURSE	SY	4,372
10	AGGREGATE SURFACE COURSE	SY	1,190
11	PERIMETER FENCE REMOVAL	LF	1,165
12	PERIMETER FENCE	LS	1,431
13	ACCESS GATE, 24' WIDE	EA	2
14	ELECTRIC GATE ACTUATOR	EA	1
15	SEEDING & FERTILIZING	ACRE	4.9
16	SILT FENCE	LF	1,410
17	PIPE PROTECTION	EA	1
18	STABILIZED CONSTRUCTION ENTRANCE	SY	90
19	ELECTRICAL DUCT BANK - 2'-1", 1'-2"	LF	321
20	UNDERGROUND JUNCTION BOX	EA	2
21	GENERAL ELECTRICAL	LS	1



**ROCK RIVER WATER
RECLAMATION DISTRICT
3501 KISHWAUKEE STREET
ROCKFORD, ILLINOIS 61109
(815) 387-7660**

No.	DATE	REVISION	INT.

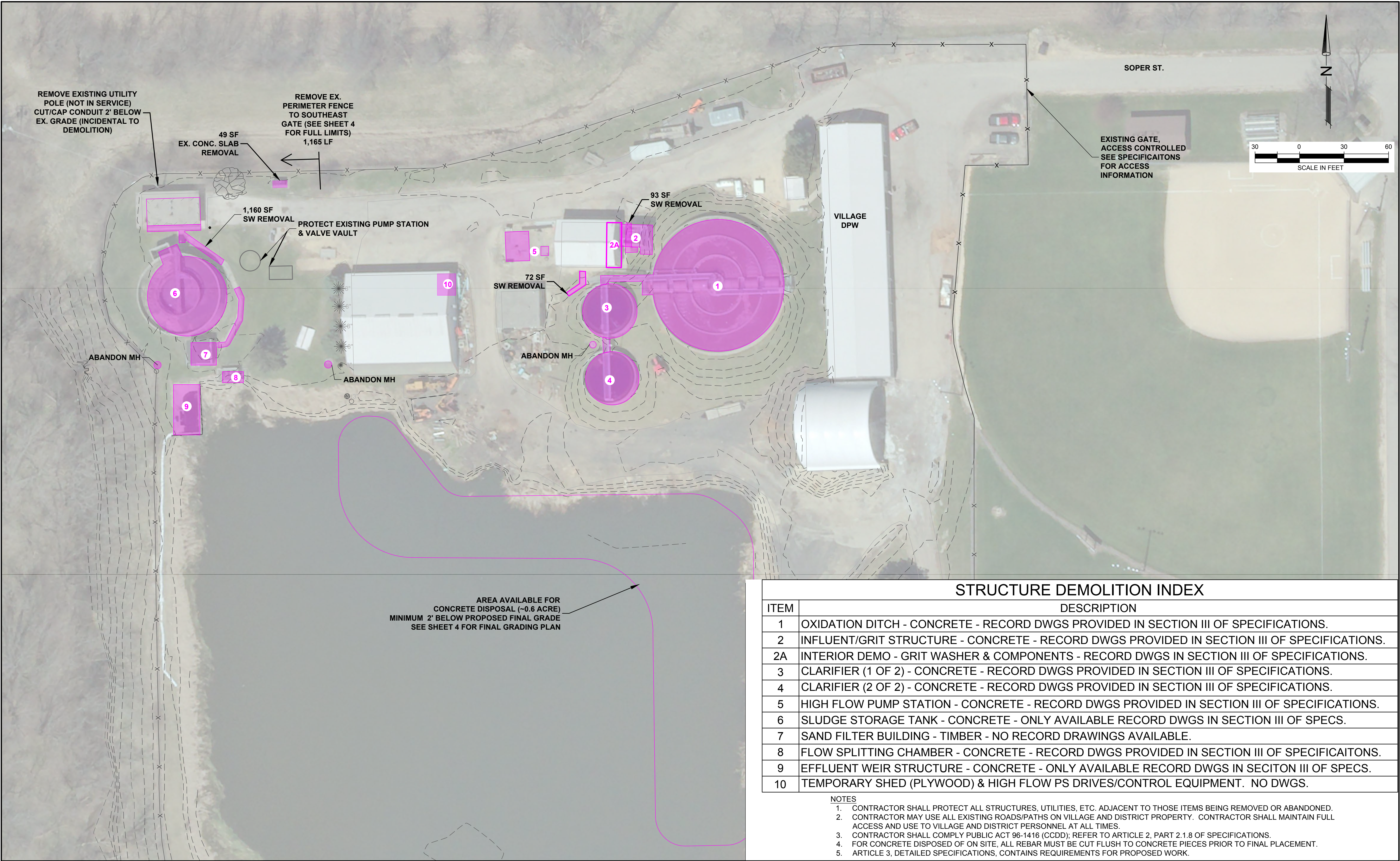
WINNEBAGO STP ABANDONMENT CAPITAL IMPROVEMENT PROJECT 1566

SUMMARY OF QUANTITIES, GENERAL NOTES

Sheet No.
2 OF 7

Date
8/5/2019

file: I:\District Projects\Winnebago Plant Abandonment 1566\01 Design\Drawings\C3D Working\Plant Abandonment\Plant Abandonment.dwg

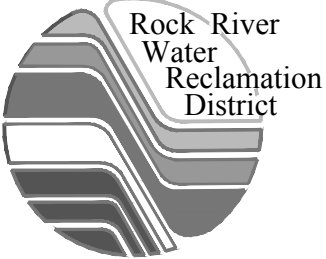


STRUCTURE DEMOLITION INDEX

ITEM	DESCRIPTION
1	OXIDATION DITCH - CONCRETE - RECORD DWGS PROVIDED IN SECTION III OF SPECIFICATIONS.
2	INFLUENT/GRIT STRUCTURE - CONCRETE - RECORD DWGS PROVIDED IN SECTION III OF SPECIFICATIONS.
2A	INTERIOR DEMO - GRIT WASHER & COMPONENTS - RECORD DWGS IN SECTION III OF SPECIFICATIONS.
3	CLARIFIER (1 OF 2) - CONCRETE - RECORD DWGS PROVIDED IN SECTION III OF SPECIFICATIONS.
4	CLARIFIER (2 OF 2) - CONCRETE - RECORD DWGS PROVIDED IN SECTION III OF SPECIFICATIONS.
5	HIGH FLOW PUMP STATION - CONCRETE - RECORD DWGS PROVIDED IN SECTION III OF SPECIFICATIONS.
6	SLUDGE STORAGE TANK - CONCRETE - ONLY AVAILABLE RECORD DWGS IN SECTION III OF SPECS.
7	SAND FILTER BUILDING - TIMBER - NO RECORD DRAWINGS AVAILABLE.
8	FLOW SPLITTING CHAMBER - CONCRETE - RECORD DWGS PROVIDED IN SECTION III OF SPECIFICAITONS.
9	EFFLUENT WEIR STRUCTURE - CONCRETE - ONLY AVAILABLE RECORD DWGS IN SECITON III OF SPECS.
10	TEMPORARY SHED (PLYWOOD) & HIGH FLOW PS DRIVES/CONTROL EQUIPMENT. NO DWGS.

NOTES

1. CONTRACTOR SHALL PROTECT ALL STRUCTURES, UTILITIES, ETC. ADJACENT TO THOSE ITEMS BEING REMOVED OR ABANDONED.
2. CONTRACTOR MAY USE ALL EXISTING ROADS/PATHS ON VILLAGE AND DISTRICT PROPERTY. CONTRACTOR SHALL MAINTAIN FULL ACCESS AND USE TO VILLAGE AND DISTRICT PERSONNEL AT ALL TIMES.
3. CONTRACTOR SHALL COMPLY PUBLIC ACT 96-1416 (CCDD); REFER TO ARTICLE 2, PART 2.1.8 OF SPECIFICATIONS.
4. FOR CONCRETE DISPOSED OF ON SITE, ALL REBAR MUST BE CUT FLUSH TO CONCRETE PIECES PRIOR TO FINAL PLACEMENT.
5. ARTICLE 3, DETAILED SPECIFICATIONS, CONTAINS REQUIREMENTS FOR PROPOSED WORK.



ROCK RIVER WATER
RECLAMATION DISTRICT
3501 KISHWAUKEE STREET
ROCKFORD, ILLINOIS 61109
(815) 387-7660

No.	DATE	REVISION	INT.

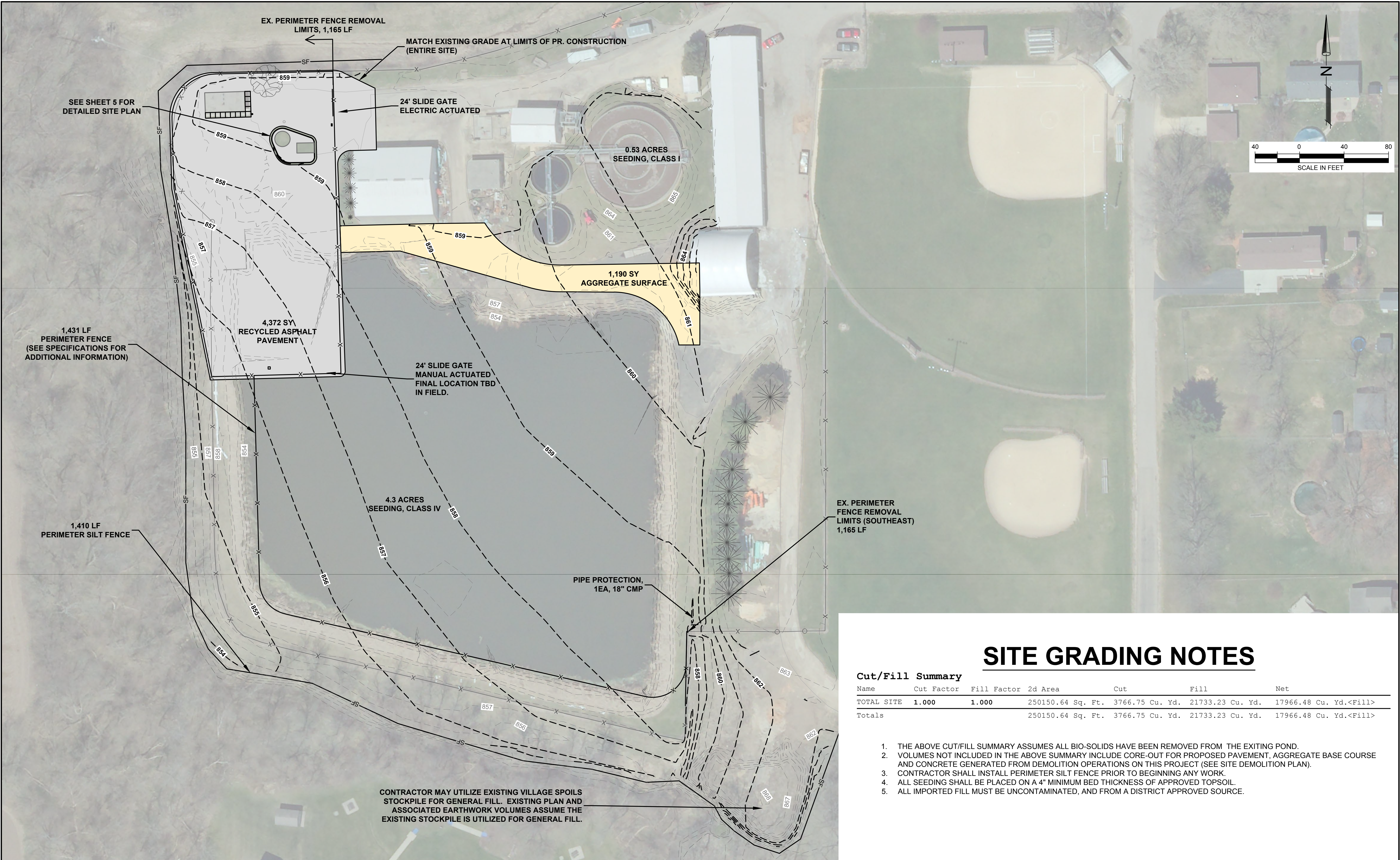
WINNEBAGO STP ABANDONMENT
CAPITAL IMPROVEMENT PROJECT 1566

SITE DEMOLITION PLAN

Sheet No.
3 OF 7

Date
8/7/2019

file: I:\District Projects\Winnebago Plant Abandonment\1566\01 Design\Drawings\C3D Working\Plant Abandonment\Plant Abandonment.dwg

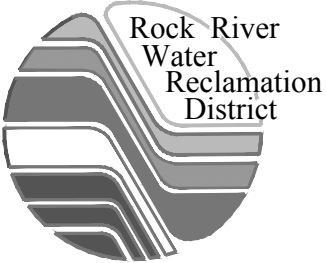


SITE GRADING NOTES

Cut/Fill Summary

Name	Cut Factor	Fill Factor	2d Area	Cut	Fill	Net
TOTAL SITE	1.000	1.000	250150.64 Sq. Ft.	3766.75 Cu. Yd.	21733.23 Cu. Yd.	17966.48 Cu. Yd.<Fill>
Totals			250150.64 Sq. Ft.	3766.75 Cu. Yd.	21733.23 Cu. Yd.	17966.48 Cu. Yd.<Fill>

1. THE ABOVE CUT/FILL SUMMARY ASSUMES ALL BIO-SOLIDS HAVE BEEN REMOVED FROM THE EXITING POND.
2. VOLUMES NOT INCLUDED IN THE ABOVE SUMMARY INCLUDE CORE-OUT FOR PROPOSED PAVEMENT, AGGREGATE BASE COURSE AND CONCRETE GENERATED FROM DEMOLITION OPERATIONS ON THIS PROJECT (SEE SITE DEMOLITION PLAN).
3. CONTRACTOR SHALL INSTALL PERIMETER SILT FENCE PRIOR TO BEGINNING ANY WORK.
4. ALL SEEDING SHALL BE PLACED ON A 4" MINIMUM BED THICKNESS OF APPROVED TOPSOIL.
5. ALL IMPORTED FILL MUST BE UNCONTAMINATED, AND FROM A DISTRICT APPROVED SOURCE.



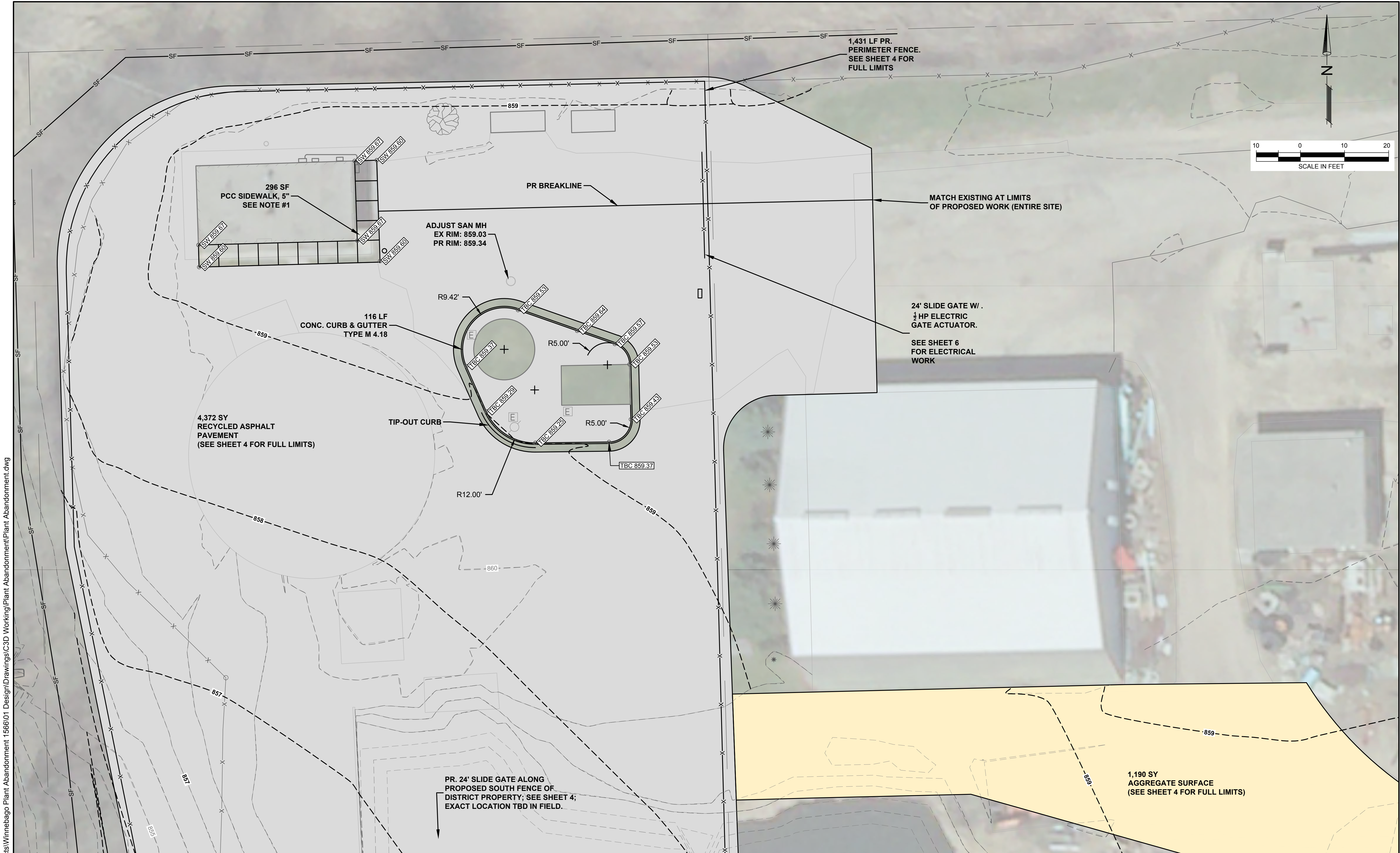
ROCK RIVER WATER
RECLAMATION DISTRICT
3501 KISHWAUKEE STREET
ROCKFORD, ILLINOIS 61109
(815) 387-7660

No.	DATE	REVISION	INT.

WINNEBAGO STP ABANDONMENT
CAPITAL IMPROVEMENT PROJECT 1566

SITE GRADING PLAN

Sheet No.
4 OF 7
Date
8/7/2019



file: I:\District Projects\Winnebago Plant Abandonment 1566\01 Design\Drawings\C3D Working\Plant Abandonment\Plant Abandonment.dwg



**ROCK RIVER WATER
RECLAMATION DISTRICT**
3501 KISHWAUKEE STREET
ROCKFORD, ILLINOIS 61109
(815) 387-7660

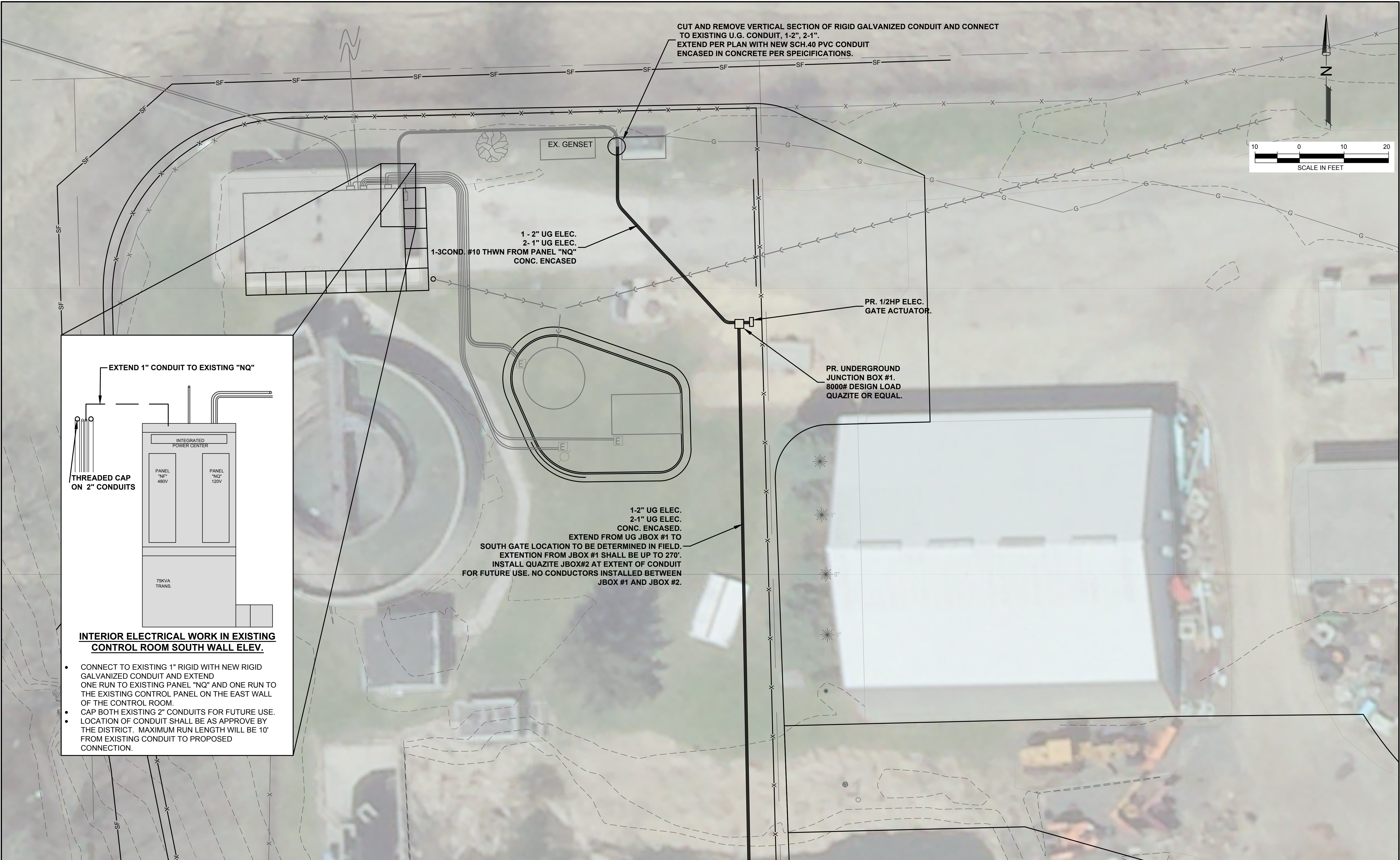
No.	DATE	REVISION	INT.

**WINNEBAGO STP ABANDONMENT
CAPITAL IMPROVEMENT PROJECT 1566**

DETAILED SITE PLAN

Sheet No.
5 OF 7
Date
8/7/2019

file: I:\District Projects\Winnebago Plant Abandonment 1566\01 Design\Drawings\C3D Working\Plant Abandonment\Plant Abandonment.dwg



**ROCK RIVER WATER
RECLAMATION DISTRICT**
3501 KISHWAUKEE STREET
ROCKFORD, ILLINOIS 61109
(815) 387-7660

No.	DATE	REVISION	INT.

**WINNEBAGO STP ABANDONMENT
CAPITAL IMPROVEMENT PROJECT 1566**

SITE UTILITY PLAN

Sheet No. 6 OF 7
Date 8/5/2019

PRE-FINAL

