

**Addendum No. 1**  
**Rock River Water Reclamation District**  
**Charles Street Sanitary Sewer Extension**  
**Special Assessment No. 132**

This ADDENDUM NO. 1, dated May 9, 2019, for the above referenced project, supersedes all contrary and conflicting information in the specifications and contract documents, which are hereby supplemented or revised as follows:

**PROJECT SPECIFICATIONS REVISIONS AND ADDITIONS**

Section I, Bidding Requirements, Article 3 – Detailed Specifications

1. PART 25: REPLACE Part 25 as follows:

**25 Thermoplastic Pavement Markings – Line 4”**

**25.1 General**

This work shall be in accordance with Section 780 of the *IDOT Standard Specifications* and consists of installing thermoplastic pavement markings along the northerly edge of pavement of Charles Street, within the limits disturbed by the construction. The pavement markings shall be a 4” wide white line.

The Contractor shall layout all markings with temporary construction paint. Prior to beginning the final installation of the thermoplastic pavement markings, District and Winnebago County Highway Department personnel must review and approve the layout.

**25.2 Materials**

Thermoplastic pavement markings shall be in accordance with Article 1095.01 of the *IDOT Standard Specifications*. Color shall be white.

**25.3 Required Submittals**

1. Material certification for the thermoplastic pavement markings.

**25.4 Payment**

Payment shall be made at the Contract unit price per Linear Foot of **Thermoplastic Pavement Markings – Line 4”**

Section II, Contract Forms, Proposal

1. PROPOSAL: DELETE the entire section and REPLACE with the attached Revised Proposal

**PROJECT PLANS REVISIONS**

Sheet 2 of 7: LEGEND, GEN NOTES, & SUMMARY OF QTYS

1. Summary of Quantities has been updated to reflect the revision of EPOXY PAVEMENT MARKINGS – LINE 4” to THERMOPLASTIC PAVEMENT MARKINGS – LINE 4”.

Sheet 3 of 12: PLAN & PROFILE STA 0+00 – 3+15

1. Roadway Restoration Notes have been updated to reflect the revision of EPOXY PAVEMENT MARKINGS – LINE 4” to THERMOPLASTIC PAVEMENT MARKINGS – LINE 4”.

This information shall be taken into consideration when preparing your bid. Bidders shall acknowledge all project addenda This addendum will be E-mailed to all plan holders as well as posted to the District's website at [www.rrwrddst.il.us](http://www.rrwrddst.il.us).

**End of Addendum No. 1**

Issued May 9, 2019

**Rock River Water Reclamation District**



Christopher T. Baer, P.E.  
Engineering Manager

# Proposal

**PROJECT:** Charles Street Sanitary Sewer Extension, Special Assessment No. 132

**LOCATION:** The work extends through the public right-of-way of Charles Street in Rockford Township, Winnebago County, IL.

**BID OPENING:** 10:30 a.m., May 14, 2019, at the Rock River Water Reclamation Offices at 3501 Kishwaukee Street, Rockford, IL

**COMPLETION DATE:** August 2, 2019

**LIQUIDATED DAMAGES:** \$300/calendar day

To: Board of Trustees  
Rock River Water Reclamation District  
3501 Kishwaukee Street  
Rockford, IL 61109

From: \_\_\_\_\_  
(Individual, Partnership or Corporation, as case may be)

\_\_\_\_\_  
(Address of Individual, Partnership or Corporation)

Gentlemen:

I (We), the undersigned, hereby propose to furnish all materials, equipment, tools, services, labor, and whatever else may be required to construct and place in service the above subject Sanitary Sewer for the Rock River Water Reclamation District all in accordance with the plans and specifications, provided by the Rock River Water Reclamation District. The undersigned also affirms and declares:

1. That I (we), have, examined and am (are) familiar with all the related contract documents and found that they are accurate and complete and are approved by the undersigned.
2. That I (we), have carefully examined the site of the work, and that, from my (our) investigation, has satisfied myself (ourselves) as to the nature and location of the work, the character, quality, and quantity of materials and the kind and extent of equipment and other facilities needed for the performance of the work, the general and local conditions and all difficulties to be encountered, and all other items which may, in any way, effect the work or its performance.

3. That this bid is made without any understanding, agreement or connection with any other person, firm, or corporation making a bid for the same purposes, and is in all respects fair and without collusion or fraud; and that I (we) are not barred from bidding as a result of a bid-rigging or bid-rotating conviction.
4. That accompanying the Proposal is a Bidder's Bond in the amount specified in Article 1, Notice to Bidders, payable to the Board of Trustees of the Rock River Water Reclamation District, which it is agreed, shall be retained as liquidated damages by said Rock River Water Reclamation District if the undersigned fails to execute the Contract in conformity with the contract documents incorporated in the contract documents and furnish bond as specified, within ten (10) days after notification of the award of the contract to the undersigned.
5. The Bidder is of lawful age and that no other person, firm or corporation has any interest in this Proposal or in the Contract proposed to be entered into.
6. The Bidder is not in arrears to the Rock River Water Reclamation District, upon debt or contract, and is not a defaulter, as surety or otherwise, upon any obligation to the Rock River Water Reclamation District.
7. No officer or employee or person whose salary is payable in whole or in part by the District is, shall be or become interested, directly or indirectly as a contracting party, partner, stockholder, surety or otherwise, in this Proposal, or in the performance of the Contract, or in the work to which it is relates, or in any portion of the profits thereof.
8. The Bidder which I represent complies with all applicable requirements of the Americans with Disabilities Act (ADA) and the Occupational Safety and Health Act (OSHA) and that if said bidder is awarded a contract, it will complete all OSHA-required or ADA-required employee and customer training, will make available all required information, and will hold harmless and indemnify the District and the representatives of the District and the Village.

In regard to participation in an approved Apprenticeship program, upon request, Contractor will be required to provide written proof of participation.

9. The undersigned, as Bidder, declares that he has adopted and promulgated written sexual harassment policies in accordance with Public Act 99-093 and will make this information available upon request.

10. The undersigned, as Bidder, declares he will comply with prevailing wages in accordance with the Illinois Department of Labor Standards. The State of Illinois requires contractors and subcontractors on public works projects (including the Rock River Water Reclamation District) to submit certified payroll records on a monthly basis, along with a statement affirming that such records are true and accurate, that the wages paid to each worker are not less than the required prevailing rate and that the contractor is aware that filing false records is a Class B Misdemeanor. The successful Bidder shall be responsible for verifying the prevailing wages each month and notifying all subcontractors of the appropriate monthly rates. Prevailing wage rates may be found on the Illinois Department of Labor website at: <https://data.illinois.gov/dataset/idol-2018-prevailing-wage-rates>

The certified payroll records must include the name, address, telephone number, social security number, job classification, hourly wages paid in each pay period, the number of hours worked each day, and the starting and ending time of work each day, for every worker employed on the project. Any contractor who fails to submit a certified payroll or knowingly files a false certified payroll is guilty of a Class B Misdemeanor. Certified payroll reports shall be submitted on industry standard forms such as IDOT Statement of Compliance (SBE 348) or other approved equal.

11. The undersigned, as Bidder, declares he will comply with the Federal Drug Free Workplace Act.
12. The undersigned, as Bidder, declares he will comply with Public Act 83-1030 entitled "Steel Products Procurement Act".
13. The undersigned, as Bidder, declares he will comply with Article 2 Public Act 96-929 (30 ILCS 570) regarding Illinois residents' employment.
14. The undersigned, as Bidder, declares he will comply with non-discrimination in employment in accordance with the Illinois Fair Employment Practices Commissions Rules & Regulations.
15. The undersigned, as Bidder, declares that he currently participates in an apprenticeship or training program that is registered with the United States Department of Labor's Bureau of Apprenticeship and Training or other acceptable State of Illinois Department of Labor monitored program.

In submitting this bid, it is understood that the right is reserved by the Rock River Water Reclamation District to reject any and all bids. It is agreed that this bid may not be withdrawn for a period of sixty (60) days from the opening thereof.

The undersigned further declares that he (they) has (have) carefully examined the following items of work and that the cost of all the work to complete this project is given in this Proposal.

<b>Item No.</b>	<b>Quantity</b>	<b>Unit</b>	<b>Description</b>	<b>Unit Price (In Writing)</b>	<b>Unit Price (In Figures)</b>	<b>Total Price (In Figures)</b>
1	315.0	LF	SANITARY SEWER, PVC SDR35, 8" DIA.			
2	1.0	EA	SANITARY MANHOLE, 4' DIA.			
3	1.0	EA	SANITARY MANHOLE, 5' DIA.			
4	2.0	EA	SANITARY SEWER SERVICE, PVC SDR26 WMQ, 6" DIA.			
5	1.0	EA	RECONNECT EXIST. 6" DIA. SANITARY SEWER SERVICE			
6	1.0	EA	SANITARY MANHOLE REMOVAL, 4' DIA.			
7	173.0	SY	DRIVEWAY PAVEMENT REMOVAL			
8	4.0	EA	INLET REMOVAL			
9	344.0	LF	STORM SEWER REMOVAL			
10	202.0	SY	AGGREGATE BASE COURSE, TY. B, 6"			
11	21.0	TON	HMA SURFACE COURSE, N50, IL-9.5, MIX "C", 2"			
12	3.0	TON	AGGREGATE WEDGE SHOULDER, TYPE B			
13	4.0	EA	INLETS, TYPE B WITH TYPE 8 FRAME & GRATE			
14	344.0	LF	STORM SEWERS, CLASS B, TYPE 1, 18" DIA., CPP			
15	1.0	LS	TREE REMOVAL / CLEARING AND GRUBBING			
16	351.0	LF	TEMPORARY CONSTRUCTION FENCE			
17	8.0	EA	INLET PROTECTION			
18	1.0	EA	DITCH CHECK			
19	560.0	SY	EROSION CONTROL BLANKET			
20	1.0	LS	TURF RESTORATION, COMPLETE			
21	350.0	LF	THERMOPLASTIC PAVEMENT MARKING - LINE 4"			
22	1.0	LS	TRAFFIC CONTROL & PROTECTION, COMPLETE			
<b>TOTAL BID PRICE:</b>						
				(In Writing)		(In Figures)

The undersigned acknowledges that he has received Addendum numbers \_\_\_\_\_, \_\_\_\_\_, and realizes that all Addenda are considered part of the contract.

\_\_\_\_\_ By: \_\_\_\_\_  
Firm Name

Name: \_\_\_\_\_ Title: \_\_\_\_\_ Date: \_\_\_\_\_



**LEGEND**

EXISTING	PROPOSED	
		RIGHT OF WAY LINE
		PROPERTY LINE
		BUILDING
		WATER EDGE
		EASEMENT - PERMANENT SANITARY
		EASEMENT - TEMPORARY CONSTRUCTION
		VEGETATION / TREE LINE
		TREE DRIPLINE
		CONTOUR - MAJOR
		CONTOUR - MINOR
		FENCE
		FENCE - TEMPORARY CONSTRUCTION
		FENCE - SILT
		ROADWAY CENTERLINE
		EDGE OF PAVEMENT
		CURB & GUTTER
		GUARD RAIL
		RAILROAD TRACKS
		CABLE - OVERHEAD
		CABLE - UNDERGROUND
		ELECTRIC - OVERHEAD
		ELECTRIC - UNDERGROUND
		FIBER OPTIC
		GAS LINE
		TELEPHONE - OVERHEAD
		TELEPHONE - UNDERGROUND
		PEDESTALS (CATV, ELEC, TELE), HANDHOLE, GAS METER, ELEC. METER
		SOIL BORING
		BENCHMARK
		MAILBOX
		UTILITY POLE W/ GUY WIRE & MAST ARM LIGHT POLE
		TREE (DECIDUOUS & CONIFEROUS)
		BRUSH & SHRUB
		SPOT ELEVATION
		EXISTING SURFACE TYPE (HOT-MIX ASPHALT, AGGREGATE, CONCRETE, TURF)

**LEGEND**

EXISTING	PROPOSED	
		SANITARY MANHOLE & SANITARY SEWER
		SANITARY SEWER SERVICE & CLEANOUT
		SANITARY FORCEMAIN
		STORM SEWER
		STORM MANHOLE, CATCH BASIN, CURB INLET, INLET SPECIAL
		DRAINAGE CULVERT
		WATER MAIN
		WATER SERVICE & WATER SERVICE VALVE
		WATER MAIN VALVE
		WATER MAIN VALVE WITH BOX
		WATER MAIN VALVE WITH VAULT
		WATER MAIN REDUCER
		FIRE HYDRANT
		DITCH CHECK
		INLET OR PIPE PROTECTION
		STABILIZED CONSTRUCTION ENTRANCE
		EROSION CONTROL BLANKET
		HEAVY DUTY EROSION CONTROL BLANKET
		SEEDING AREA, CLASS 1
		SEEDING AREA, CLASS 3
		PAVEMENT REPLACEMENT
		DRIVEWAY REPLACEMENT
		AGGREGATE REPLACEMENT
		RIP RAP

**ABBREVIATIONS**

ABD = ABANDON(ED)	MH = MANHOLE
CMP = CORRUGATED METAL PIPE	PVMNT = PAVEMENT
CO = CLEAN OUT	PR = PROPOSED
CY = CUBIC YARD(S)	RCP = REINFORCED CONCRETE PIPE
DI = DUCTILE IRON	REM = REMOVE(D)
EA = EACH	REPL = REPLACE(D)
EL = ELEVATION	R/R = REMOVE & REPLACE
EX = EXISTING	SAN = SANITARY
FM = FORCE MAIN	SVC = SERVICE
FT = FEET	SY = SQUARE YARD(S)
INV = INVERT	TY = TYPE
LF = LINEAR FEET	UNK = UNKNOWN
LINCIPP = LINED WITH CURED IN PLACE PIPE	VCP = VITRIFIED CLAY PIPE
LS = LUMP SUM	WM = WATER MAIN

**GENERAL NOTES**

1. THE CONTRACTOR IS SOLELY RESPONSIBLE FOR EXECUTION OF WORK TO THE LINES AND GRADES SHOWN ON THESE PLANS. CONSTRUCTION SHALL NOT VARY FROM PLANS WITHOUT DISTRICT APPROVAL.
2. THE ROCK RIVER WATER RECLAMATION DISTRICT, MUNICIPALITIES, PERTINENT ROADWAY AUTHORITIES, AND ALL AFFECTED PROPERTY OWNERS SHALL BE NOTIFIED AT LEAST 48 HOURS BEFORE CONSTRUCTION CAN COMMENCE.
3. ALL SERVICE LOCATIONS ARE APPROXIMATE AND MAY BE CHANGED IN THE FIELD WITH THE APPROVAL OF THE INSPECTOR. NO ADDITIONAL COMPENSATION WILL BE AWARDED DUE TO REVISED LOCATION.
4. ALL CASTINGS SHALL BE SET TO FINAL GRADE PER ROCK RIVER WATER RECLAMATION DISTRICT REQUIREMENTS.
5. SANITARY SEWER SHALL BE CONSTRUCTED IN ACCORDANCE WITH THE STANDARD SPECIFICATIONS FOR WATER AND SEWER CONSTRUCTION IN THE STATE OF ILLINOIS, LATEST EDITION, AND THE REQUIREMENTS OF THE ROCK RIVER WATER RECLAMATION DISTRICT.
6. THE CONTRACTOR SHALL VERIFY THE LOCATION OF ALL UTILITIES IN THE FIELD PRIOR TO CONSTRUCTION. THE CONTRACTOR SHALL NOTIFY J.U.L.I.E. AT 8-1-1 OR 1-800-892-0123 AND ANY OTHER UTILITIES NOT ON THE J.U.L.I.E. SYSTEM 48 HOURS PRIOR TO THE START OF CONSTRUCTION.
7. ALL ROADWAY CONSTRUCTION SHALL BE COMPLETED IN ACCORDANCE WITH THE ROADWAY AUTHORITY'S REQUIREMENTS, DISTRICT SPECIFICATIONS, AND THE STANDARD SPECIFICATION FOR ROAD AND BRIDGE CONSTRUCTION IN ILLINOIS, LATEST EDITION.
8. THE CONTRACTOR SHALL COMPLY WITH ALL REQUIREMENTS OF THE I.E.P.A. STANDARDS AND SPECIFICATIONS, AND THE ILLINOIS URBAN MANUAL FOR SOIL EROSION AND SEDIMENT CONTROL.
9. PROTECTION OF WATER SUPPLIES SHALL BE PER THE REQUIREMENTS OF TITLE 35, C, SECTION 370.350 OF THE ILLINOIS RECOMMENDED STANDARDS FOR SEWAGE WORKS.

**SUMMARY OF QUANTITIES**

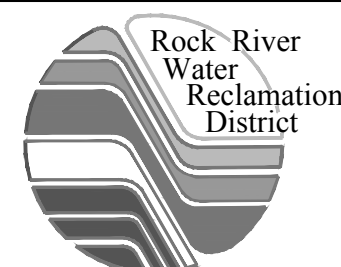
Item No.	QTY.	Unit	Description
1	315.0	LF	SANITARY SEWER, PVC SDR35, 8" DIA.
2	1.0	EA	SANITARY MANHOLE, 4' DIA.
3	1.0	EA	SANITARY MANHOLE, 5' DIA.
4	2.0	EA	SANITARY SEWER SERVICE, PVC SDR26 WMQ, 6" DIA.
5	1.0	EA	RECONNECT EXIST. 6" DIA. SANITARY SEWER SERVICE
6	1.0	EA	SANITARY MANHOLE REMOVAL, 4' DIA.
7	173.0	SY	DRIVEWAY PAVEMENT REMOVAL
8	4.0	EA	INLET REMOVAL
9	344.0	LF	STORM SEWER REMOVAL
10	202.0	SY	AGGREGATE BASE COURSE, TY. B, 6"
11	21.0	TON	HMA SURFACE COURSE, N50, IL-9.5, MIX "C", 2"
12	3.0	TON	AGGREGATE WEDGE SHOULDER, TYPE B
13	4.0	EA	INLETS, TYPE B WITH TYPE 8 FRAME & GRATE
14	344.0	LF	STORM SEWERS, CLASS B, TYPE 1, 18" DIA., CPP
15	1.0	LS	TREE REMOVAL / CLEARING AND GRUBBING
16	351.0	LF	TEMPORARY CONSTRUCTION FENCE
17	8.0	EA	INLET PROTECTION
18	1.0	EA	DITCH CHECK
19	560.0	SY	EROSION CONTROL BLANKET
20	1.0	LS	TURF RESTORATION, COMPLETE
21	350.0	LF	THERMOPLASTIC PAVEMENT MARKING - LINE 4"
22	1.0	LS	TRAFFIC CONTROL & PROTECTION, COMPLETE

**HOT-MIX ASPHALT MIXTURE REQUIREMENTS**

MIXTURE USE(S)	SURFACE COURSE	BINDER COURSE
PG:	PG 64-22	PG 64-22
DESIGN AIR VOIDS	4.0 @ N50	4.0 @ N50
MIXTURE COMPOSITION (GRADATION MIXTURE)	IL 9.5	IL 19.0
FRICTION AGGREGATE	MIX "C"	N/A
MIX UNIT WEIGHT	112 lbs/sy/in	112 lbs/sy/in

THESE MIXTURE REQUIREMENTS ARE APPLICABLE FOR THIS PROJECT

file: I:\District Projects\Charles St SA 132\Engineering\Drawings\CharlesSt\_SA132-Design.dwg



**ROCK RIVER WATER RECLAMATION DISTRICT**  
 3501 KISHWAUKEE STREET  
 ROCKFORD, ILLINOIS 61109  
 (815) 387-7660

No.	DATE	REVISION	INT.
1	5/9/19	REVISE EPOXY PAVEMENT MARKINGS TO THERMOPLASTIC PAVEMENT MARKINGS	TVN

**CHARLES STREET SANITARY SEWER EXTENSION  
 SPECIAL ASSESSMENT #132**

**LEGEND & GENERAL NOTES & SUMMARY OF QUANTITIES**

FOR BID

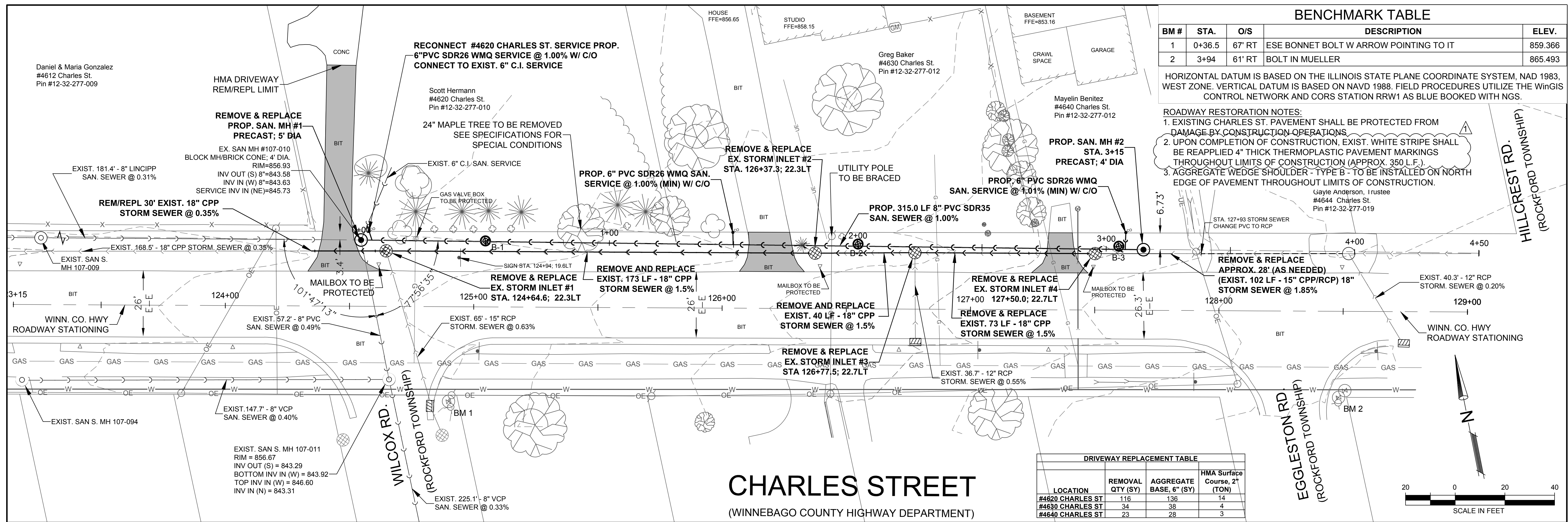
Sheet No.  
2 OF 7  
Date  
5/9/2019

**BENCHMARK TABLE**

BM #	STA.	O/S	DESCRIPTION	ELEV.
1	0+36.5	67' RT	ESE BONNET BOLT W ARROW POINTING TO IT	859.366
2	3+94	61' RT	BOLT IN MUELLER	865.493

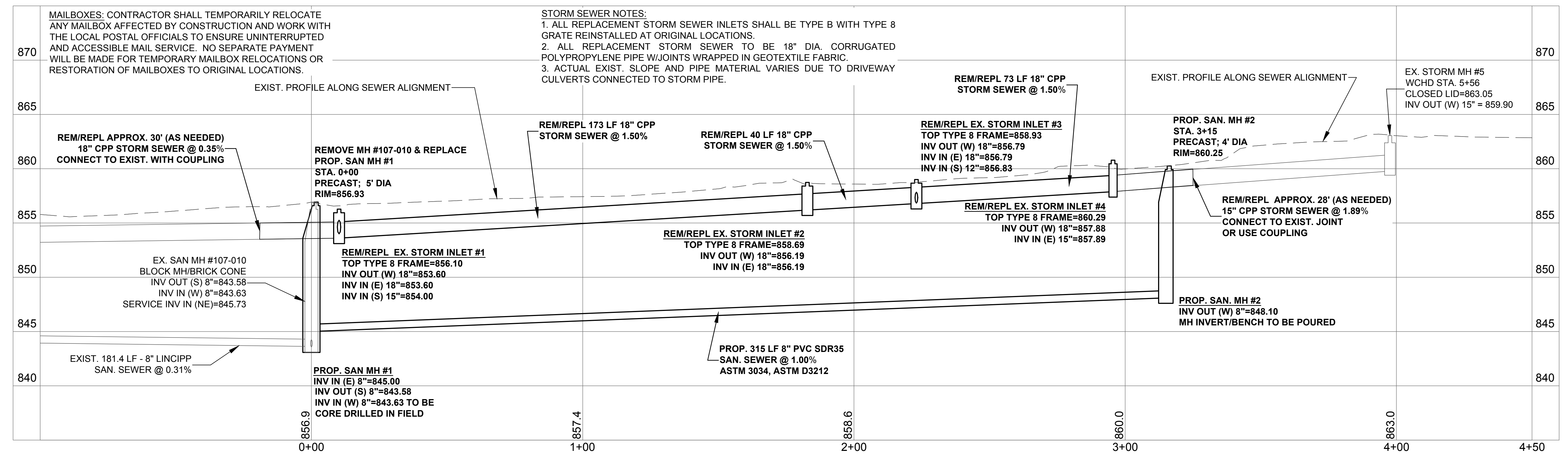
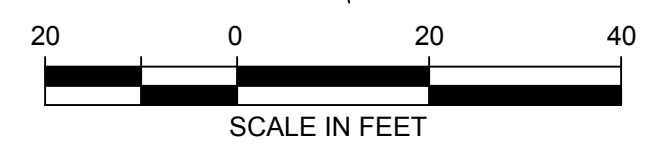
HORIZONTAL DATUM IS BASED ON THE ILLINOIS STATE PLANE COORDINATE SYSTEM, NAD 1983, WEST ZONE. VERTICAL DATUM IS BASED ON NAVD 1988. FIELD PROCEDURES UTILIZE THE WinGIS CONTROL NETWORK AND CORS STATION RRW1 AS BLUE BOOKED WITH NGS.

- ROADWAY RESTORATION NOTES:**
- EXISTING CHARLES ST. PAVEMENT SHALL BE PROTECTED FROM DAMAGE BY CONSTRUCTION OPERATIONS.
  - UPON COMPLETION OF CONSTRUCTION, EXIST. WHITE STRIPE SHALL BE REAPPLIED 4" THICK THERMOPLASTIC PAVEMENT MARKINGS THROUGHOUT LIMITS OF CONSTRUCTION (APPROX. 350 L.F.).
  - AGGREGATE WEDGE SHOULDER - TYPE B - TO BE INSTALLED ON NORTH EDGE OF PAVEMENT THROUGHOUT LIMITS OF CONSTRUCTION.



**DRIVEWAY REPLACEMENT TABLE**

LOCATION	REMOVAL QTY (SY)	AGGREGATE BASE, 6" (SY)	HMA Surface Course, 2" (TON)
#4620 CHARLES ST	116	136	14
#4630 CHARLES ST	34	38	4
#4640 CHARLES ST	23	28	3



**MAILBOXES:** CONTRACTOR SHALL TEMPORARILY RELOCATE ANY MAILBOX AFFECTED BY CONSTRUCTION AND WORK WITH THE LOCAL POSTAL OFFICIALS TO ENSURE UNINTERRUPTED AND ACCESSIBLE MAIL SERVICE. NO SEPARATE PAYMENT WILL BE MADE FOR TEMPORARY MAILBOX RELOCATIONS OR RESTORATION OF MAILBOXES TO ORIGINAL LOCATIONS.

- STORM SEWER NOTES:**
- ALL REPLACEMENT STORM SEWER INLETS SHALL BE TYPE B WITH TYPE 8 GRATE REINSTALLED AT ORIGINAL LOCATIONS.
  - ALL REPLACEMENT STORM SEWER TO BE 18" DIA. CORRUGATED POLYPROPYLENE PIPE W/JOINTS WRAPPED IN GEOTEXTILE FABRIC.
  - ACTUAL EXIST. SLOPE AND PIPE MATERIAL VARIES DUE TO DRIVEWAY CULVERTS CONNECTED TO STORM PIPE.

file: I:\District Projects\Charles St SA 132\Engineering\DWGs\CharlesSt\_SA132-Design.dwg

<p><b>ROCK RIVER WATER RECLAMATION DISTRICT</b> 3501 KISHWAUKEE STREET ROCKFORD, ILLINOIS 61109 (815) 387-7660</p>	No.	DATE	REVISION	INT.	<p><b>CHARLES STREET SANITARY SEWER EXTENSION</b> <b>SPECIAL ASSESSMENT #132</b></p>	<p><b>PLAN &amp; PROFILE</b> <b>STA. 0+00 - 3+15</b></p>	Sheet No.	
	1	5/9/19	REVISE EPOXY PAVEMENT MARKINGS TO THERMOPLASTIC PAVEMENT MARKINGS	TVN			3 OF 7	
						FOR BID		Date
								5/9/2019