

Addendum No. 1

Rock River Water Reclamation District 2019-2020 Sanitary Sewer Lining Capital Project No. 2037 IEPA Project No. L17-5658

This Addendum Number 1, dated May 21, 2019, for the above referenced project, supersedes all contrary and conflicting information in the specifications and contract documents, which are hereby supplemented or revised as follows:

PROJECT SPECIFICATIONS

Section I

1. Bid Schedule, Page 24: The Bid Schedule on page 24 has been revised, eliminating 30" Sanitary Sewer Lining from the contract. Bidders shall replace Page 24 of the original Contract Documents with the enclosed. The revised Bid Schedule shall be used in submitted bids.

Section II

1. Part 4, Sewer Flow Control: The following supplemental information shall be added to this section. Estimated peak wet-weather flow rates to be bypassed for line segments 18" diameter and larger sewers are provided below. The District does not guarantee the accuracy of these numbers. The District will not entertain requests for additional compensation if flow rates observed at the time work is performed differ significantly from the figures provided. Contractor remains responsible to provide the current level of service to all properties and is liable for any damage caused by sewer back-ups.
 - a. Items 30-34, 24" diameter: 1.90 MGD
 - b. Item 77, 18" diameter: 1.36 MGD
 - c. Items 216-220, 24" diameter: 4.05 MGD
 - d. Item 221, 18" diameter: 1.49 MGD

Section III

1. Delete Item 139. All items that follow will retain the original Item Number assigned in Section III – Lining List.

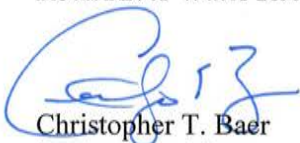
Section IV

1. Additional location maps for sewers 18" diameter and larger are enclosed.

This information shall be taken into consideration when preparing your bid. This addendum will be E-mailed to all plan holders as well as posted to the District's website at www.rwrwd.dst.il.us.

End of Addendum No. 1

Issued May 21, 2019
Rock River Water Reclamation District



Christopher T. Baer
Engineering Manager

Encl: Revised Bid Schedule (P.24), Location Maps

BIDDER agrees to perform all the work described in the CONTRACT DOCUMENTS for the following unit prices or lump sum:

Bid Schedule – REVISED Per Addendum No. 1

NOTE: BIDS shall include sales tax and all other applicable taxes and fees.

No.	Item	Quantity	Unit	Unit Price	Total Price
1	6" Sanitary Sewer Lining	243	LF		
2	8" Sanitary Sewer Lining	36,742	LF		
3	9" Sanitary Sewer Lining	6,020	LF		
4	10" Sanitary Sewer Lining	3,723	LF		
5	12" Sanitary Sewer Lining	7,426	LF		
6	15" Sanitary Sewer Lining	1,363	LF		
7	18" Sanitary Sewer Lining	696	LF		
8	24" Sanitary Sewer Lining	2,589	LF		
9	Service Reinstatement	967	EA		
10	Protruding Service Removal	60	EA		
11	Traffic Control & Protection	1	LS		

TOTAL OF BID..... \$ _____

Bidder is currently certified as an MBE or WBE under EPA'S DBE Program? Yes _____ No _____

Respectfully submitted,

Signature

Mailing Address

Printed Name

City, State Zip

Title

Email Address

Telephone Number

Fax Number

(SEAL – if BID is by a corporation)

Attest

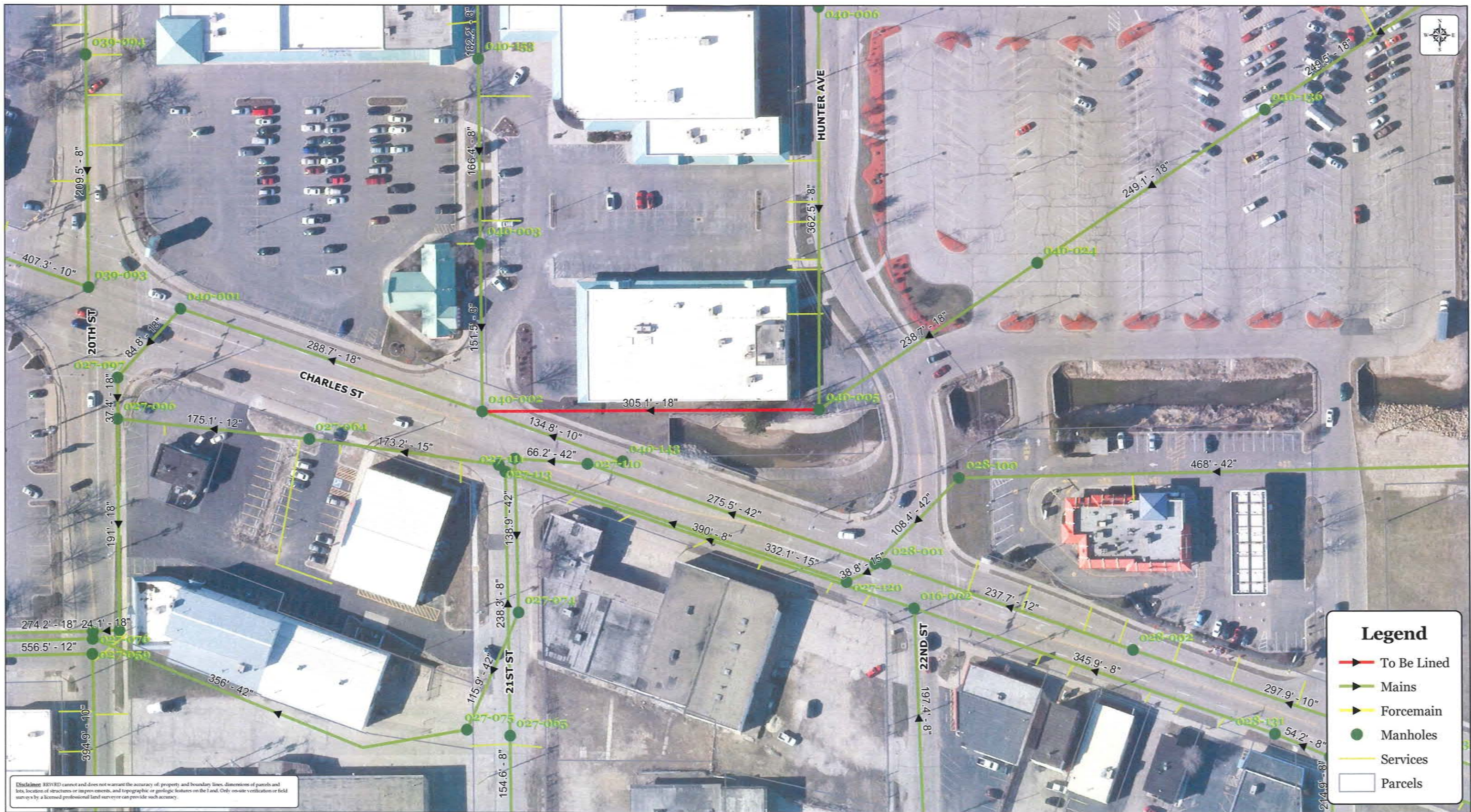


Items 30 - 34

1 inch = 100 feet

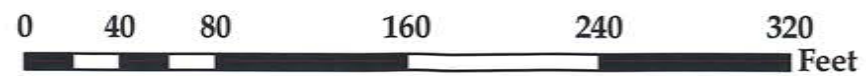


By: J. Kink
Produced: 5/20/19
RRWRD Engineering Department



Item 77

1 inch = 80 feet



By: J. Kink
Produced: 5/20/19
RRWRD Engineering Department





Item 221

1 inch = 100 feet



By: J. Kink
Produced: 5/20/19
RRWRD Engineering Department