

# ROCK RIVER WATER RECLAMATION DISTRICT

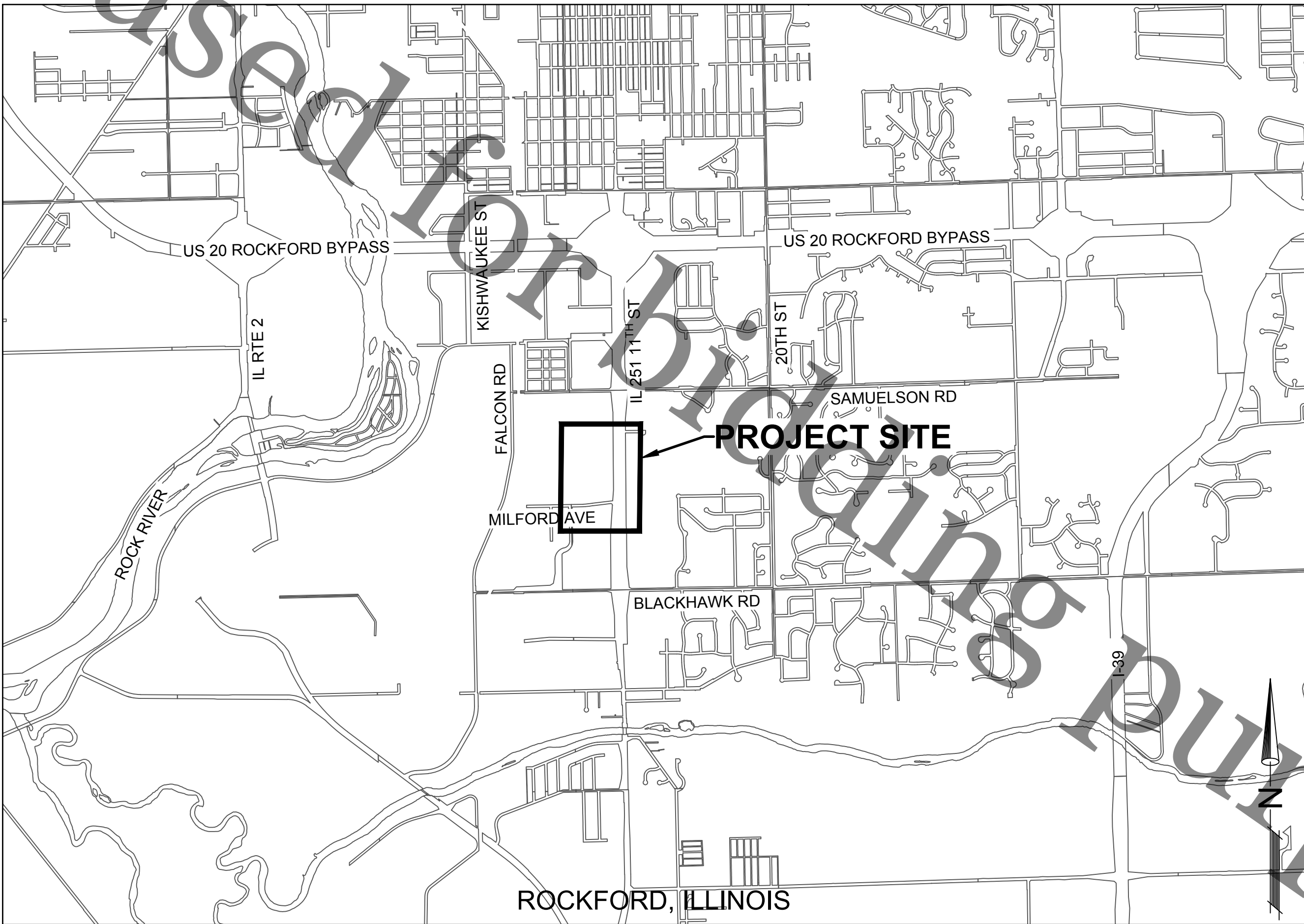
## MILFORD RD. / IL 251 SANITARY SEWER REROUTE CAPITAL IMPROVEMENT PROJECT #1935 2018

### BOARD OF TRUSTEES

DONALD MASSIER	PRESIDENT
ELMER JONES	VICE-PRESIDENT
RICHARD POLLACK	CLERK/TREASURER
JOHN SWEENEY	TRUSTEE
BEN BERNSTEN	TRUSTEE

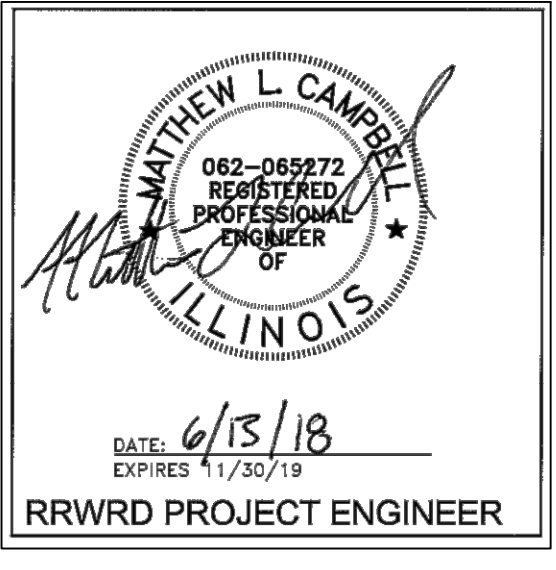
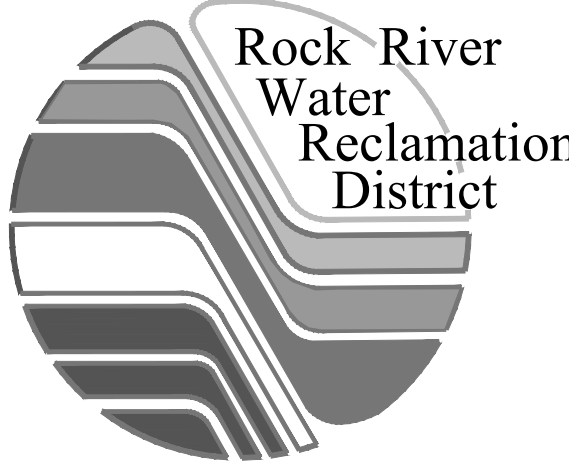
### OFFICIALS

TIMOTHY S. HANSON	DISTRICT DIRECTOR
CHRISTOPHER T. BAER, PE	ENGINEERING MANAGER



### INDEX OF SHEETS

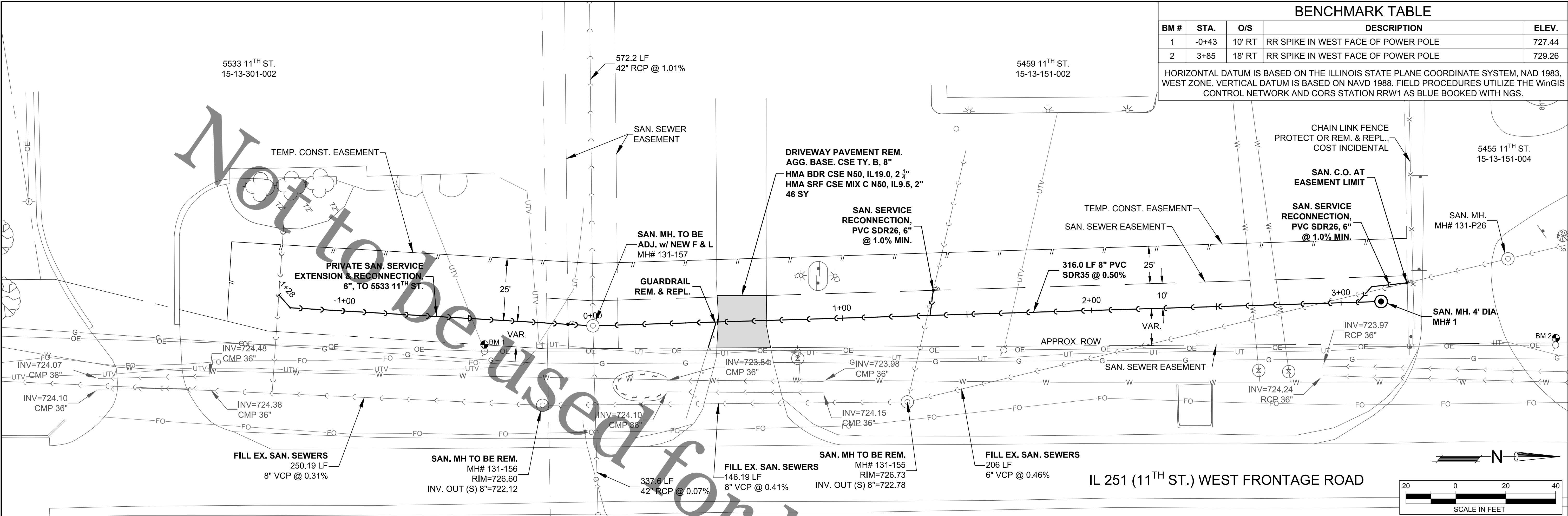
1. COVER
2. LEGEND, GENERAL NOTES, SUMMARY OF QUANTITIES
3. PLAN & PROFILE - IL 251 (11<sup>TH</sup> ST.) WEST FRONTAGE ROAD
4. EROSION CONTROL AND TURF RESTORATION PLAN
5. R.R.W.R.D. STANDARD DETAILS











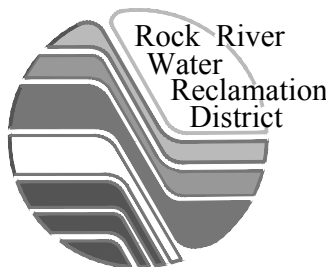
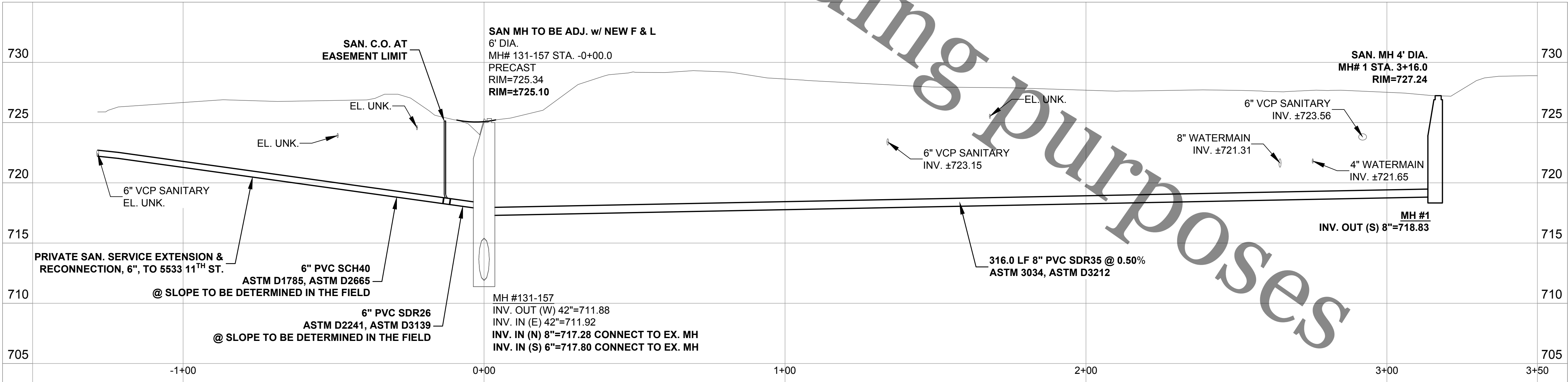
BENCHMARK TABLE				
BM #	STA.	O/S	DESCRIPTION	ELEV.
1	-0+43	10' RT	RR SPIKE IN WEST FACE OF POWER POLE	727.44
2	3+85	18' RT	RR SPIKE IN WEST FACE OF POWER POLE	729.26

HORIZONTAL DATUM IS BASED ON THE ILLINOIS STATE PLANE COORDINATE SYSTEM, NAD 1983, WEST ZONE. VERTICAL DATUM IS BASED ON NAVD 1988. FIELD PROCEDURES UTILIZE THE WinGIS CONTROL NETWORK AND CORS STATION RRW1 AS BLUE BOOKED WITH NGS.

- NOTE:
- THE CONTRACTOR SHALL INSTALL A WATERTIGHT PLUG IN THE UPSTM (E) PIPE OF MH 131-105, WHICH IS ±388 FEET WEST OF THE INTERSECTION OF THE WEST FRONTAGE ROAD AND MILFORD AVE., AT THE DIRECTION OF THE ENGINEER, COST INCIDENTAL TO THE ITEM *FILL EXISTING SANITARY SEWERS*. THE CONTRACTOR SHALL ABANDON & FILL EX. SAN. SEWERS FROM MH 131-105 TO THE CROSSING AT STA. 2+90.
  - THE CONTRACTOR SHALL REMOVE MH 131-104 AS SHOWN ON SHEET 4.

- NOTE:
- EXPLORATORY EXCAVATION SHALL BE PERFORMED TO OBTAIN THE LOCATIONS, SIZES, AND ELEVATIONS OF UTILITIES AT THE FOLLOWING LOCATIONS:
- STA. 2+65 0' O/S 8" WATERMAIN
  - STA. 2+75 0' O/S 4" WATERMAIN
  - STA. -1+30 0' O/S 6" SANITARY SERVICE

VERIFICATION OF THE ABOVE LOCATIONS, SIZES, AND ELEVATIONS SHALL BE COMPLETED AND PROVIDED TO THE DISTRICT PRIOR TO THE INSTALLATION OF SANITARY SEWER. SEE SPECIAL PROVISION 'EXPLORATORY EXCAVATION'.



ROCK RIVER WATER  
RECLAMATION DISTRICT  
3501 KISHWAUKEE STREET  
ROCKFORD, ILLINOIS 61109  
(815) 387-7660

No.	DATE	REVISION	INT.

MILFORD RD. / IL 251 SANITARY SEWER REROUTE  
CAPITAL IMPROVEMENT PROJECT #1935

IL251 (11TH ST.) WEST FRONTAGE RD - PLAN & PROFILE  
STA. -1+28 TO 3+16

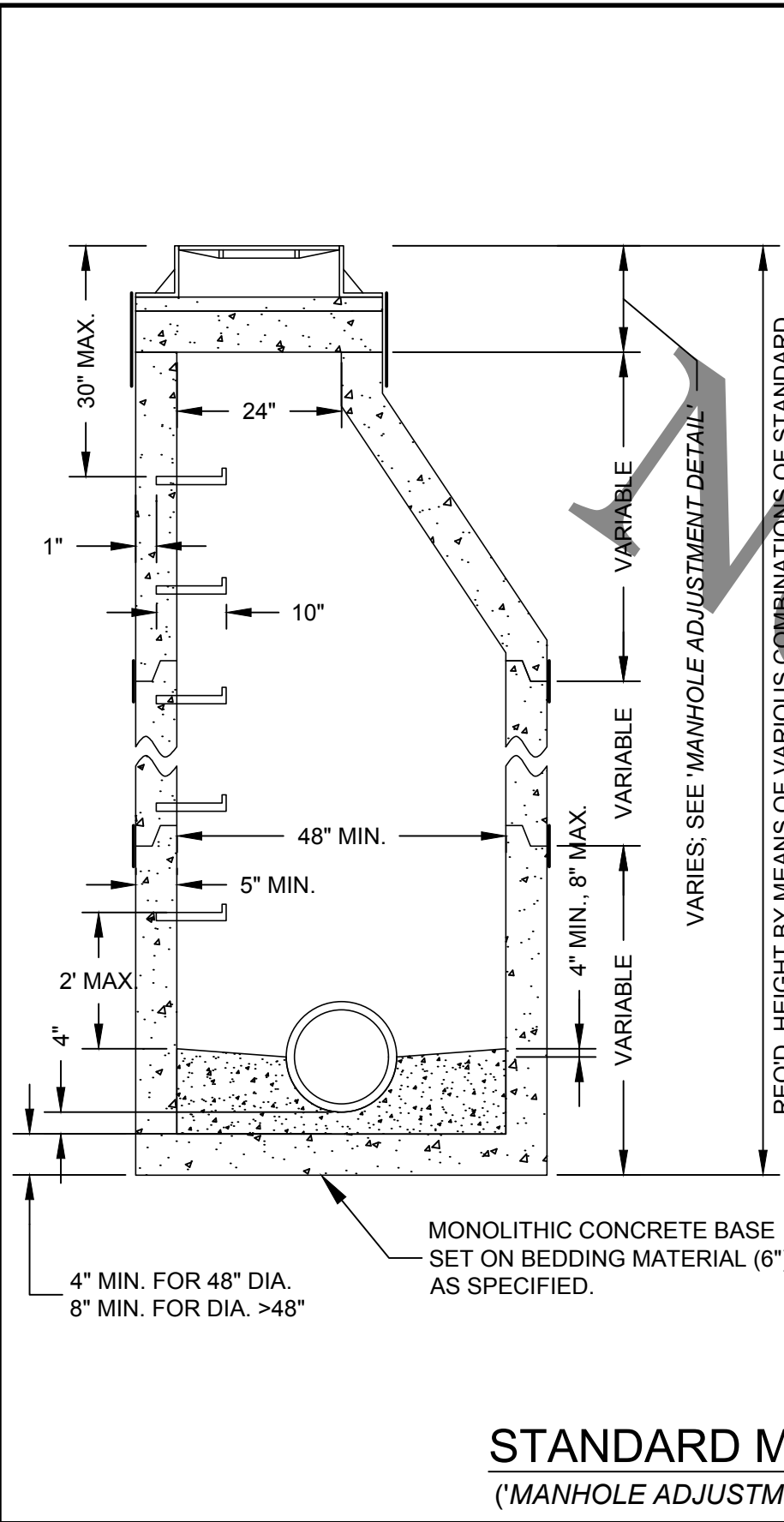
CONSTRUCTION

Sheet No.  
3 OF 5  
Date  
6/13/2018



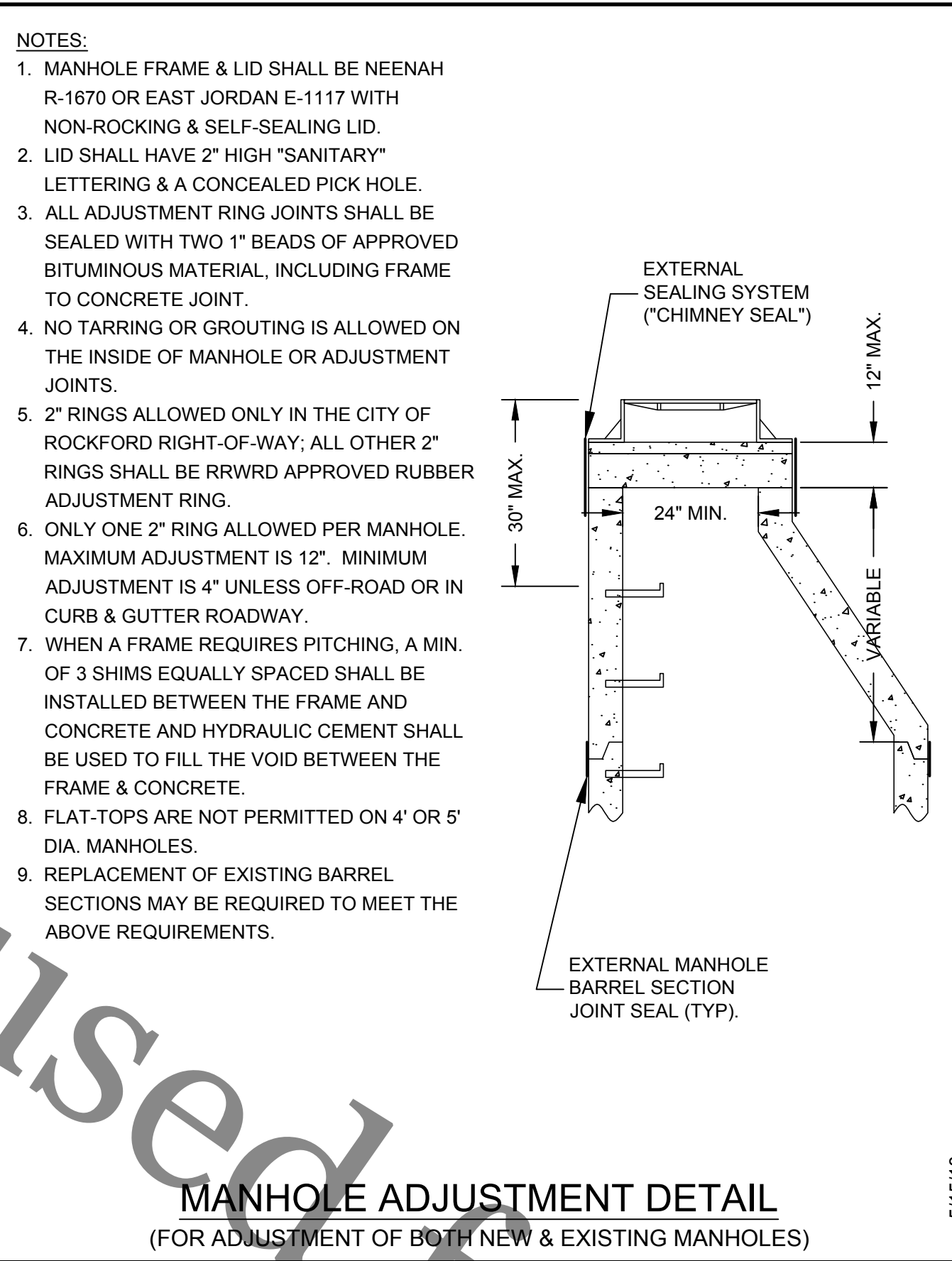




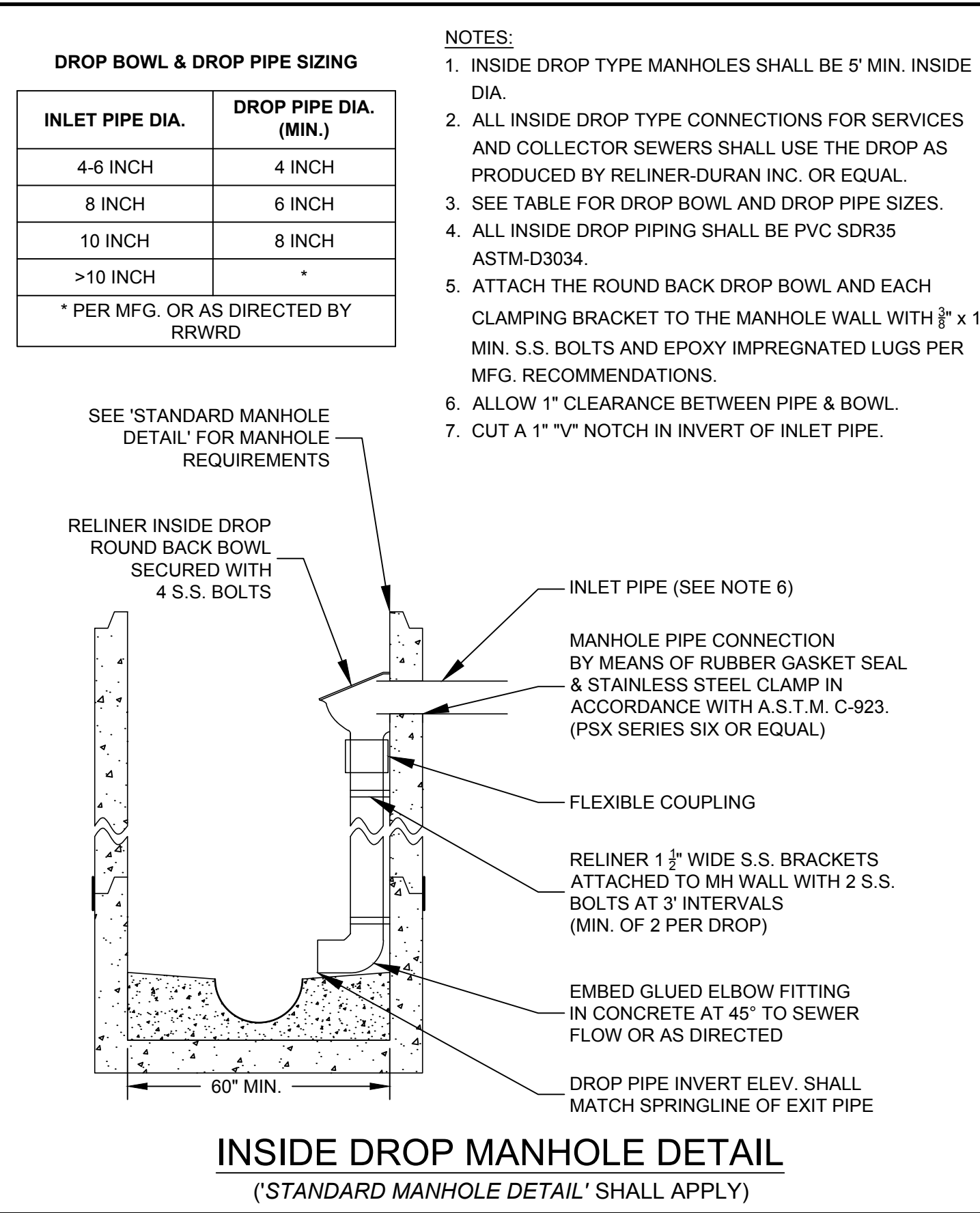


- NOTES:
1. THE MAX. DROP FROM THE INVERT OF ANY PIPE TO THE CONCRETE CHANNEL UNDER THAT PIPE SHALL BE 8".
  2. MANHOLES LOCATED OUTSIDE OF PUBLIC RIGHT-OF-WAY SHALL BE MARKED WITH A STEEL FENCE POST AS DIRECTED.
  3. ALL NEW MANHOLES SHALL BE VACUUM TESTED PER A.S.T.M. C-1244 PRIOR TO ACCEPTANCE.
  4. ALL BARREL JOINTS SHALL BE SEALED WITH 3 1/2" x 3/8" BITUMINOUS MATERIAL ON THE LOWER SHIPLAP.
  5. ALL BARREL JOINTS SHALL BE SEALED WITH AN EXTERNAL BARREL SEAL CENTERED ON THE JOINT (MAR MAC MACWRAP OR EQ.)
  6. MANHOLE STRUCTURE SHALL BE CONSTRUCTED OF PRECAST REINFORCED CONCRETE MANHOLE RISER SECTIONS IN ACCORDANCE WITH A.S.T.M. C478-90 OR THE LATEST DESIGNATION.
  7. PRECAST FLAT TOPS ARE NOT APPROVED FOR USE.
  8. SEE 'MANHOLE ADJUSTMENT DETAIL' FOR ADJUSTMENT REQUIREMENTS.
  9. PIPE CONNECTIONS TO NEW MANHOLES SHALL BE MADE BY MEANS OF EITHER RUBBER GASKET SEAL (A-LOK OR APPROVED EQUAL) CONFORMING TO ASTM F-477 CAST INTEGRALLY IN MANHOLE WALL, OR RUBBER GASKET SEAL AND STAINLESS STEEL CLAMP (PSX SERIES SIX OR APPROVED EQUAL) CONFORMING TO ASTM C-923. FOR PIPE CONNECTIONS WITH A DEPTH OF >20 FT., A RUBBER GASKET SEAL (A-LOK OR APPROVED EQUAL) CONFORMING TO ASTM F-477 CAST INTEGRALLY IN MANHOLE WALL SHALL BE USED.
  10. PIPE CONNECTIONS TO EXISTING MANHOLES SHALL BE MADE BY MEANS OF CORE DRILLING MANHOLE WALL AND INSTALLING RUBBER GASKET SEAL AND STAINLESS STEEL CLAMP (PSX SERIES SIX OR APPROVED EQUAL) CONFORMING TO ASTM C-923.
  11. THE MAXIMUM DISTANCE FROM ANY INLET PIPE INVERT TO THE OUTLET PIPE INVERT SHALL BE 2'. A DISTANCE GREATER THAN 2' WILL REQUIRE AN INSIDE DROP CONNECTION PER 'INSIDE DROP MANHOLE DETAIL'.

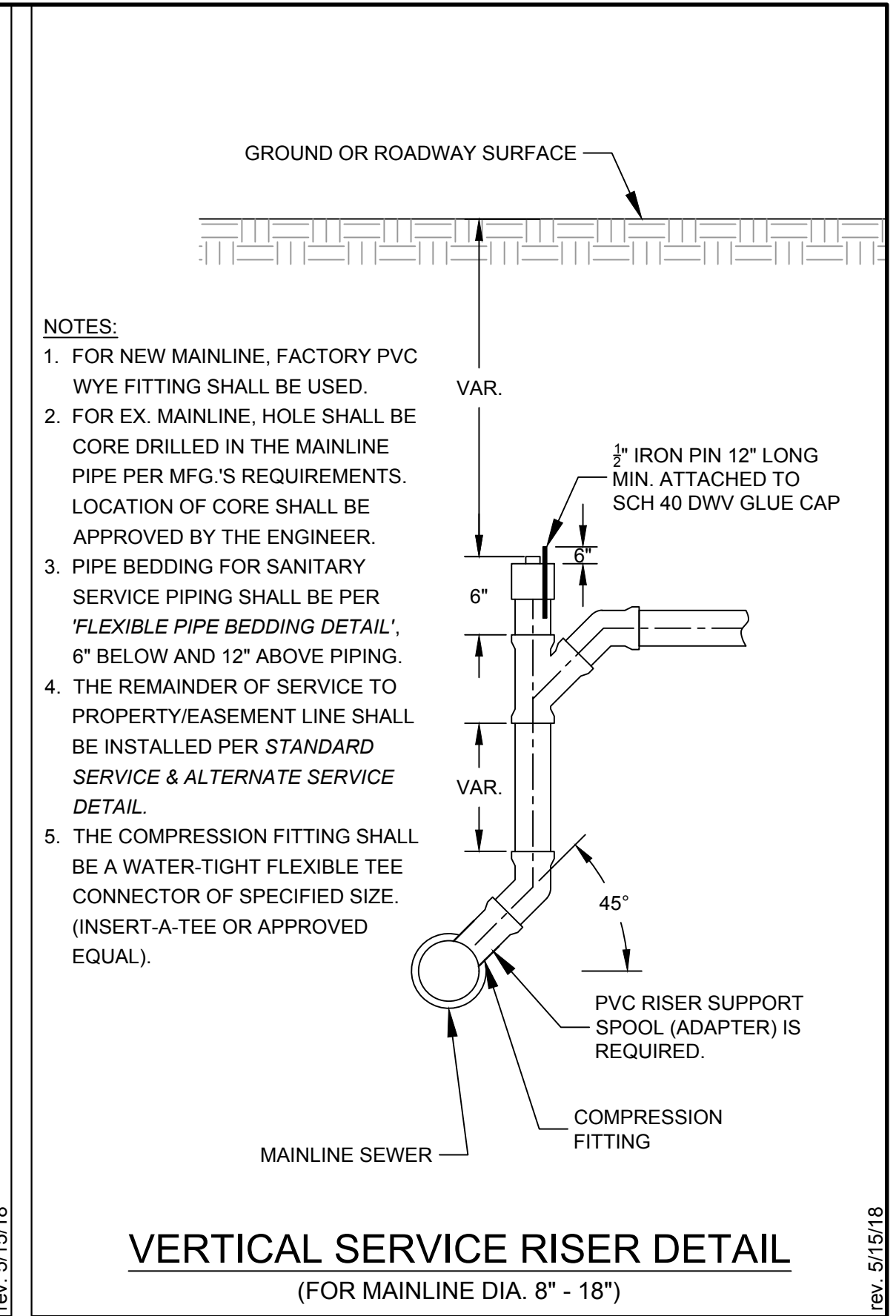
STANDARD MANHOLE DETAIL  
(‘MANHOLE ADJUSTMENT DETAIL’ SHALL APPLY)



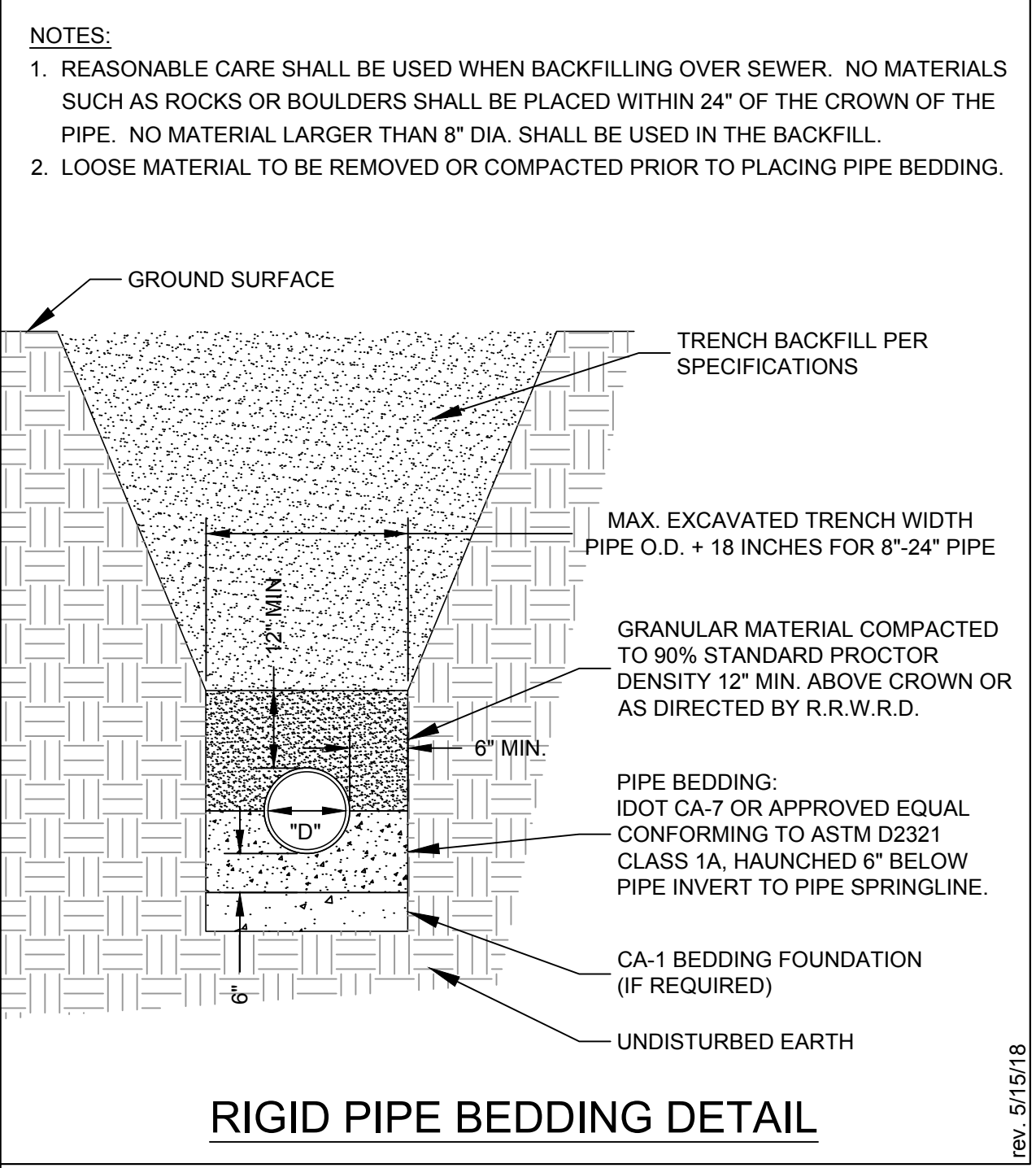
MANHOLE ADJUSTMENT DETAIL  
(FOR ADJUSTMENT OF BOTH NEW & EXISTING MANHOLES)



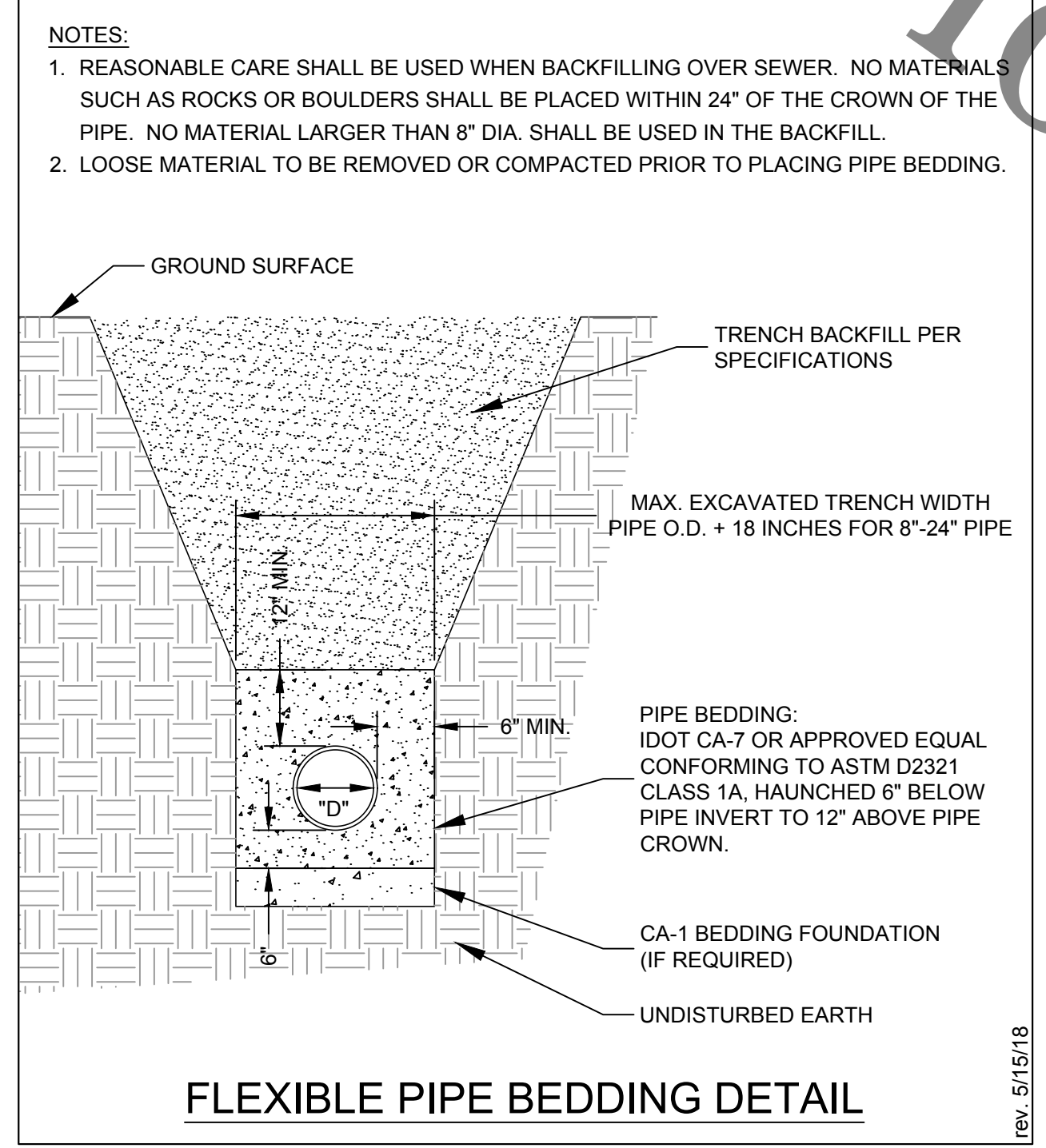
INSIDE DROP MANHOLE DETAIL  
(‘STANDARD MANHOLE DETAIL’ SHALL APPLY)



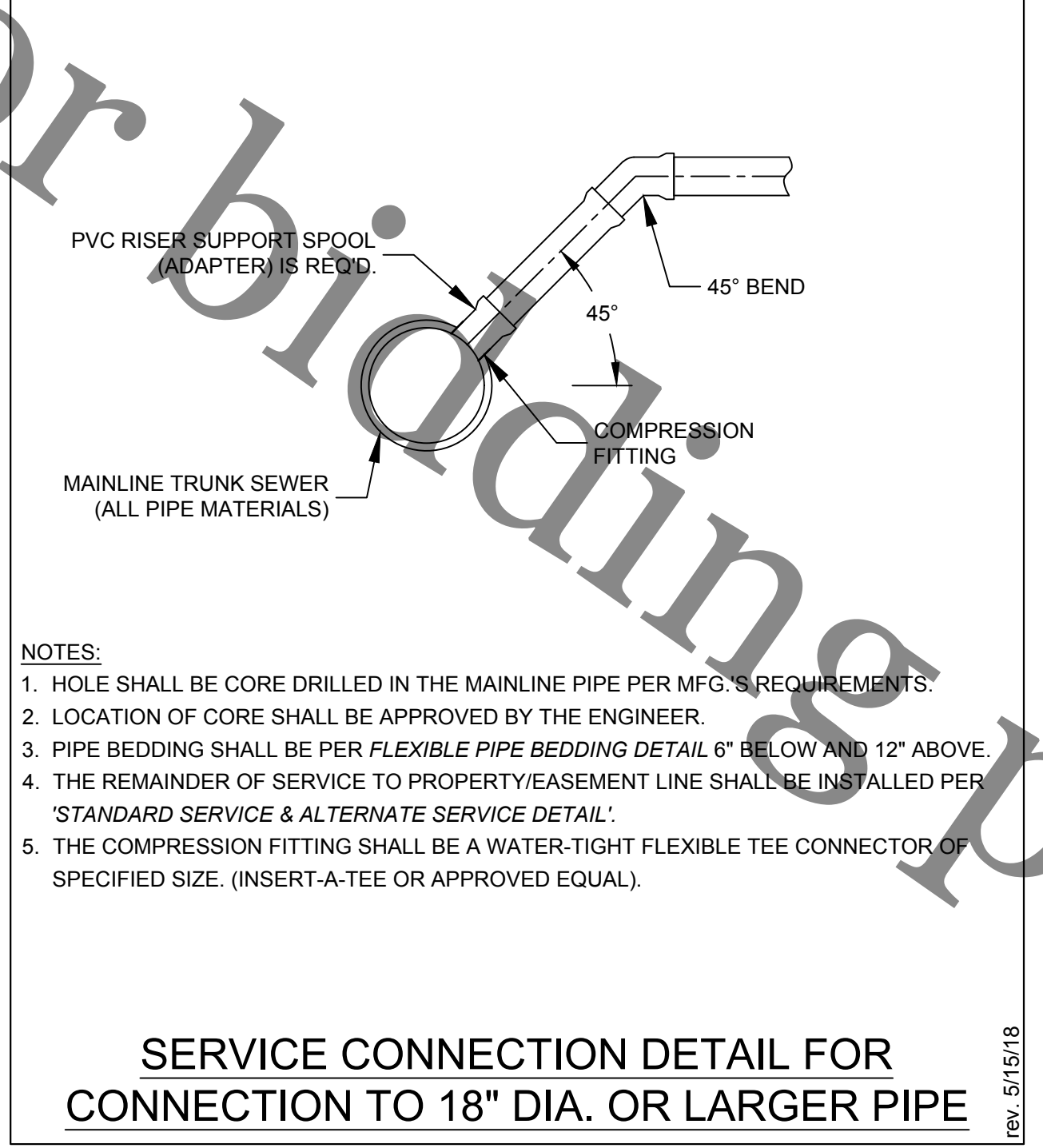
VERTICAL SERVICE RISER DETAIL  
(FOR MAINLINE DIA. 8" - 18")



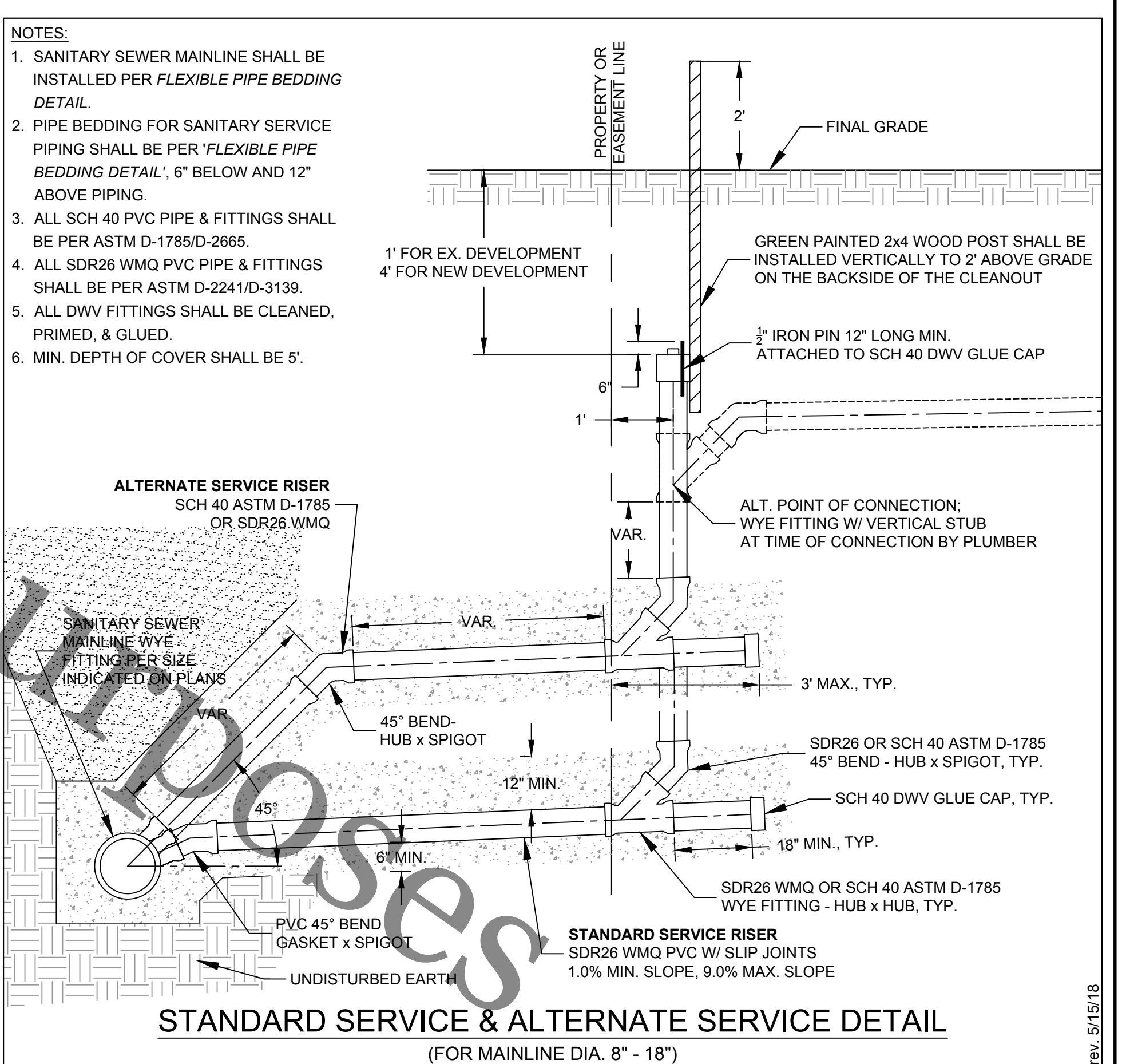
RIGID PIPE BEDDING DETAIL



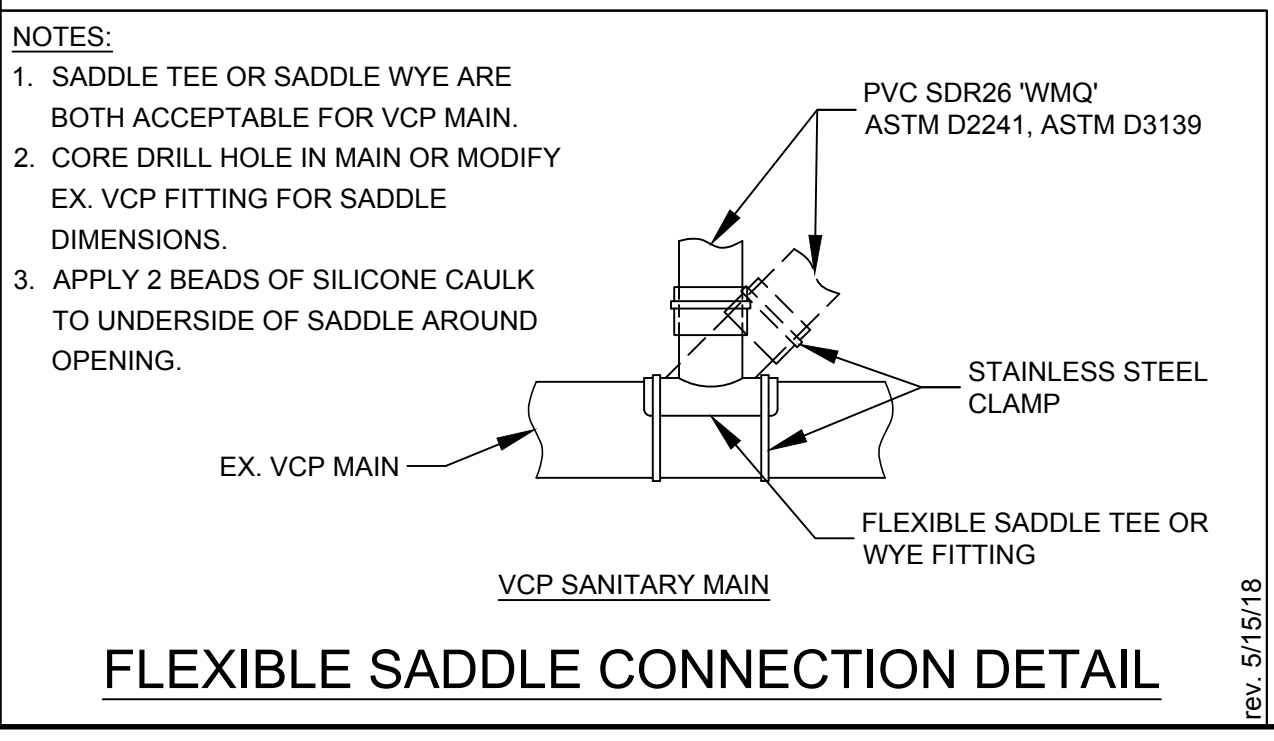
FLEXIBLE PIPE BEDDING DETAIL



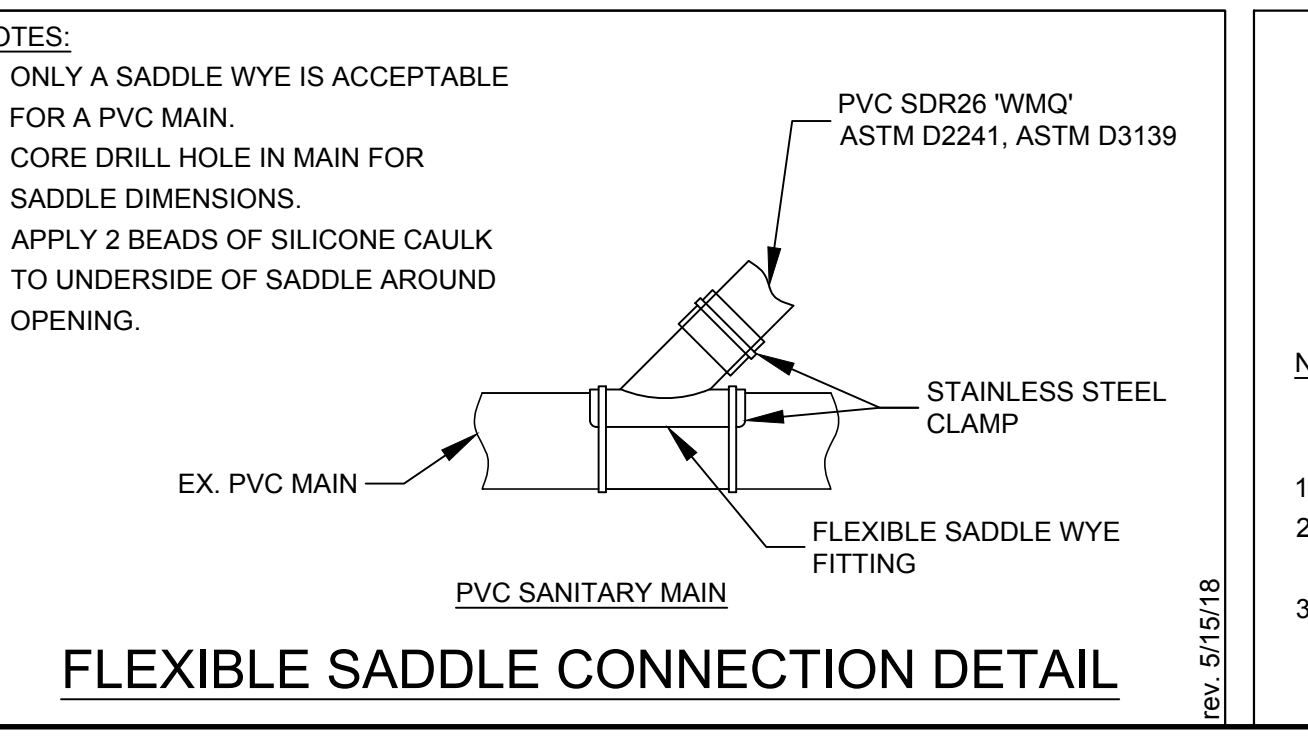
SERVICE CONNECTION DETAIL FOR CONNECTION TO 18" DIA. OR LARGER PIPE



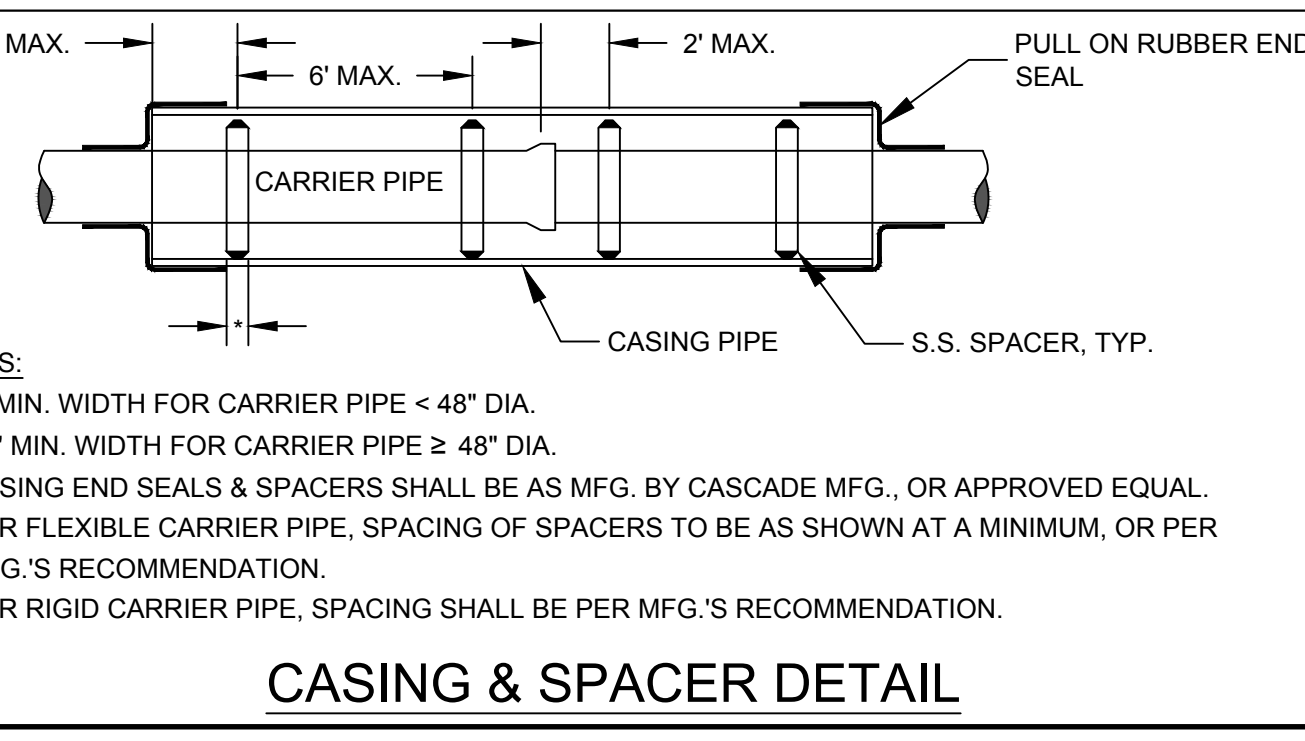
STANDARD SERVICE & ALTERNATE SERVICE DETAIL  
(FOR MAINLINE DIA. 8" - 18")



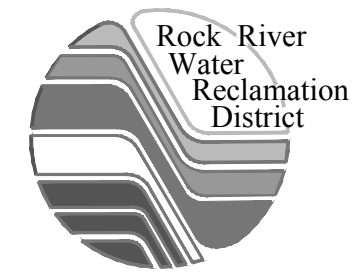
FLEXIBLE SADDLE CONNECTION DETAIL



FLEXIBLE SADDLE CONNECTION DETAIL



CASING & SPACER DETAIL



**ROCK RIVER WATER RECLAMATION DISTRICT**  
**STANDARD DETAILS**  
(NOT TO SCALE)  
3501 KISHWAUKEE ST. P.O. BOX 7480  
ROCKFORD, ILLINOIS 61109 PH. (815) 387-7660

Sheet No.  
5 OF 5  
Date  
5/29/2018